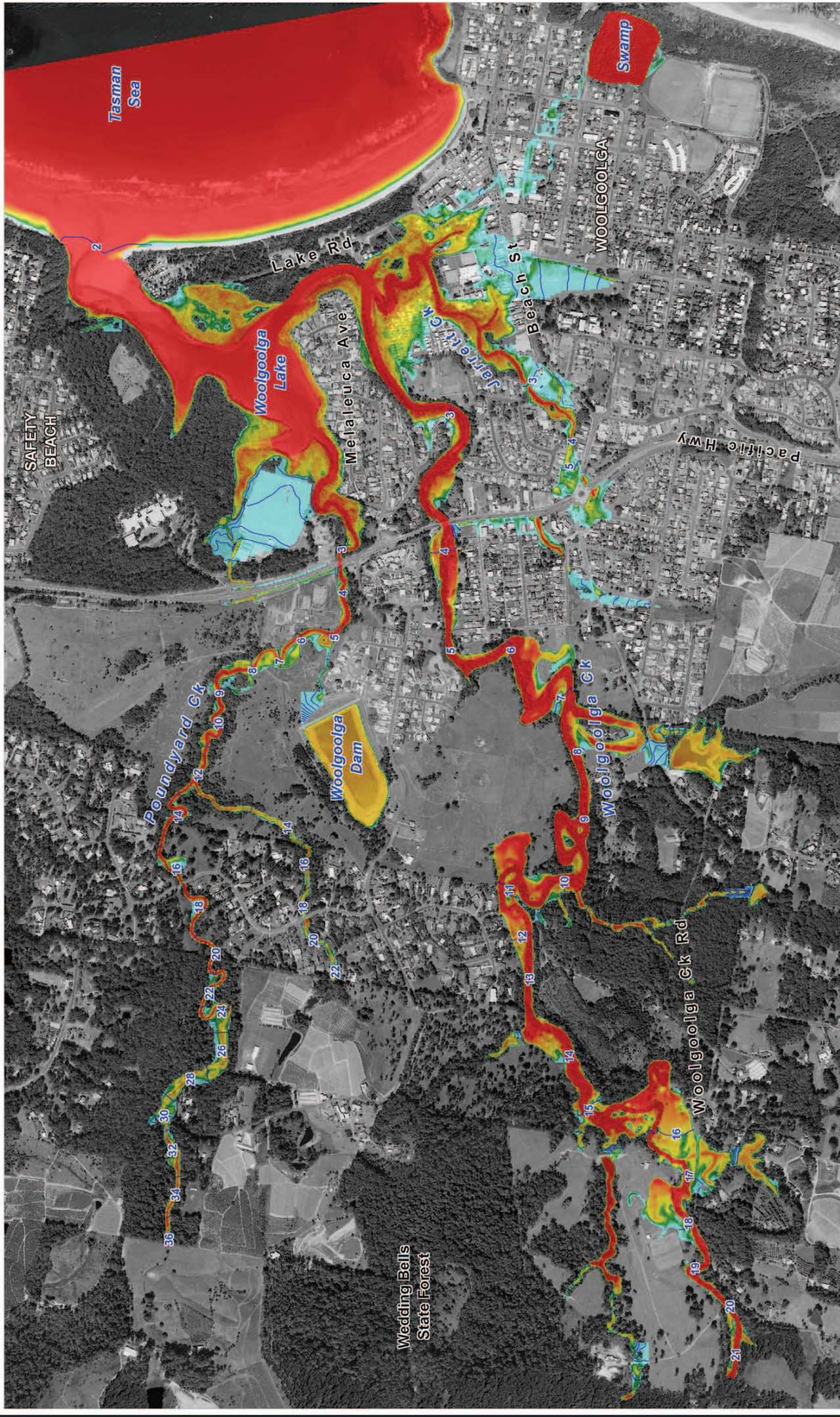


APPENDIX A: DESIGN FLOOD MAPPING



LEGEND

Peak Flood Depth (m)

0.10	(lower depths mapped as same colour)
0.25	
0.50	
1.00	
1.50	(higher depths mapped as same colour)

5 1m Interval Peak Flood Level Contours

Title: Woolgoolga Flood Study
20% AEP Modelled Peak Flood Depths and Water Levels

Figure: A-1

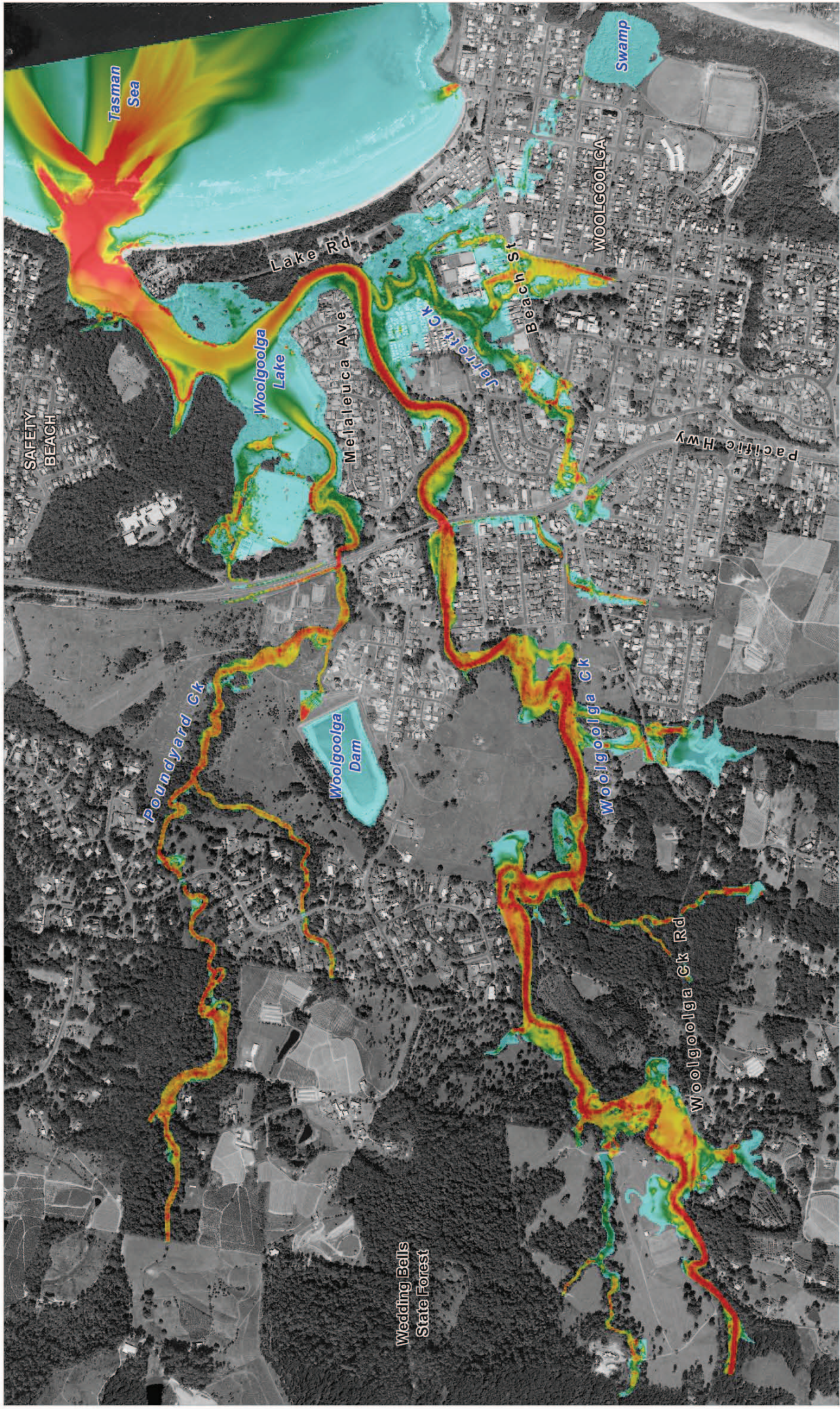
Rev: A

BMT WBM endeavours to ensure that the information provided in this map is correct at the time of publication. BMT WBM does not warrant, guarantee or accept any responsibility regarding the currency and accuracy of information contained in this map.

0 250 500m
 Approx. Scale

Filepath : K:\N2245_Woolgoolga_Flood_Study\MapInfo\Workspaces\DRG_101_120507_20%_AEP_Depths.WOR

BMT WBM
 www.bmtwbm.com.au



LEGEND

Peak Flood Velocity (m/s)

0.10	(lower velocities mapped as same colour)
0.25	
0.50	
1.00	
1.50	(higher velocities mapped as same colour)

Title: Woolgoolga Flood Study
20% AEP Modelled Peak Flood Velocities

Figure: A-2

Rev: A

BMT WBM endeavours to ensure that the information provided in this map is correct at the time of publication. BMT WBM does not warrant, guarantee, or represent the accuracy, currency and security of information contained in this map.

0 250 500m
 Approx. Scale

BMT WBM
 www.bmtwbm.com.au

Filepath : K:\N2245_Woolgoolga_Flood_Study\MapInfo\Workspaces\DRG_102_120507_20%_AEP_Velocities.WOR

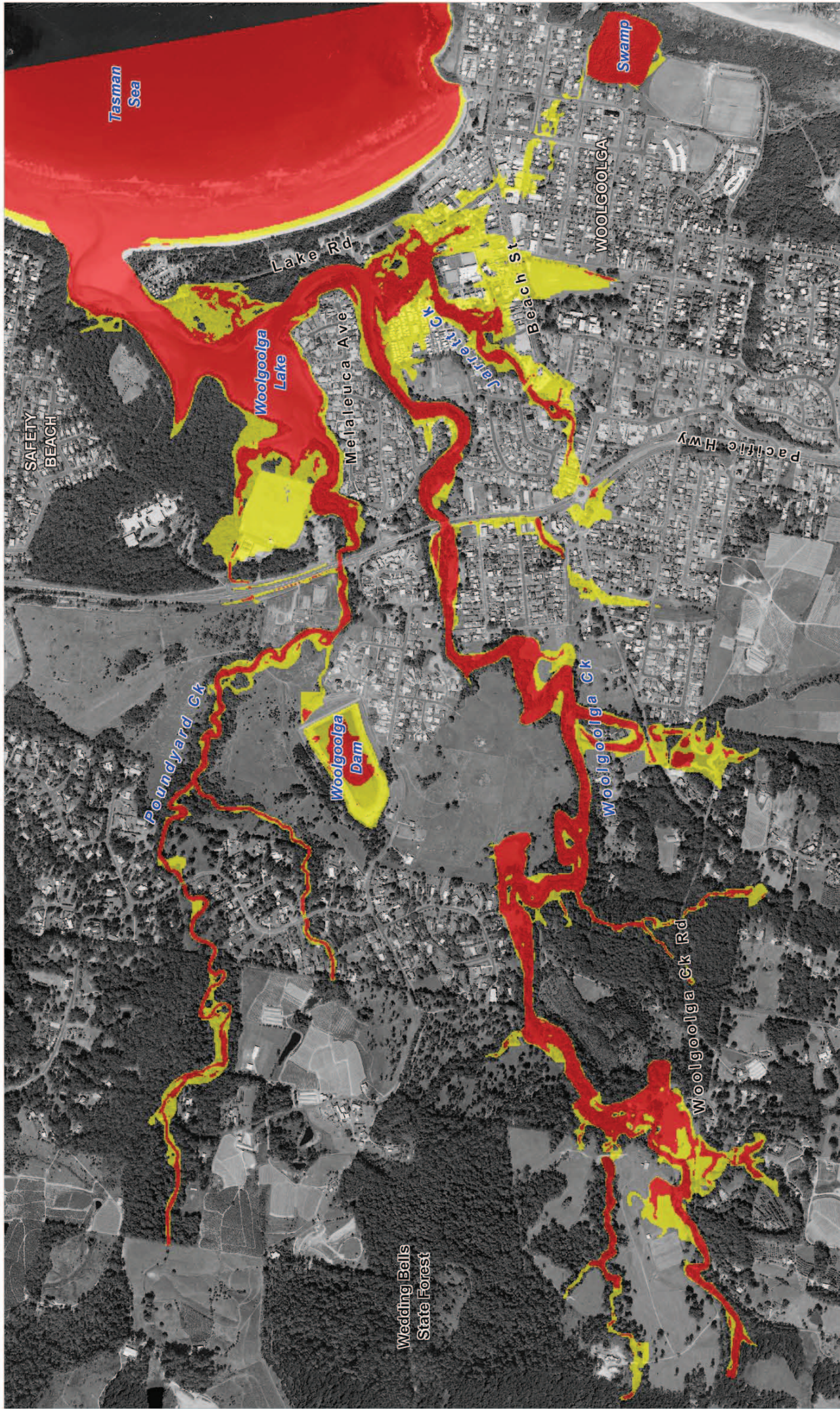


Figure: A-3

Rev: A

Title: Woolgoolga Flood Study
20% AEP Modelled Peak Flood Hazards

LEGEND
Peak Flood Hazard
low hazard
high hazard

0 250 500m
Approx. Scale

BMT WBM
www.bmtwbm.com.au

BMT WBM endeavours to ensure that the information provided in this map is correct at the time of publication. BMT WBM does not warrant, guarantee, or accept any responsibility regarding the currency and accuracy of information contained in this map.

Filepath : K:\IN245_Woolgoolga_Flood_Study\MapInfo\Workspaces\DRG_103_120507_20% AEP_Hazards.WOR