

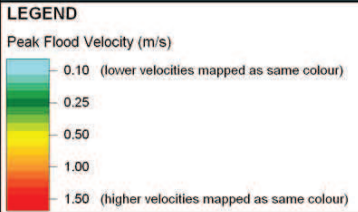
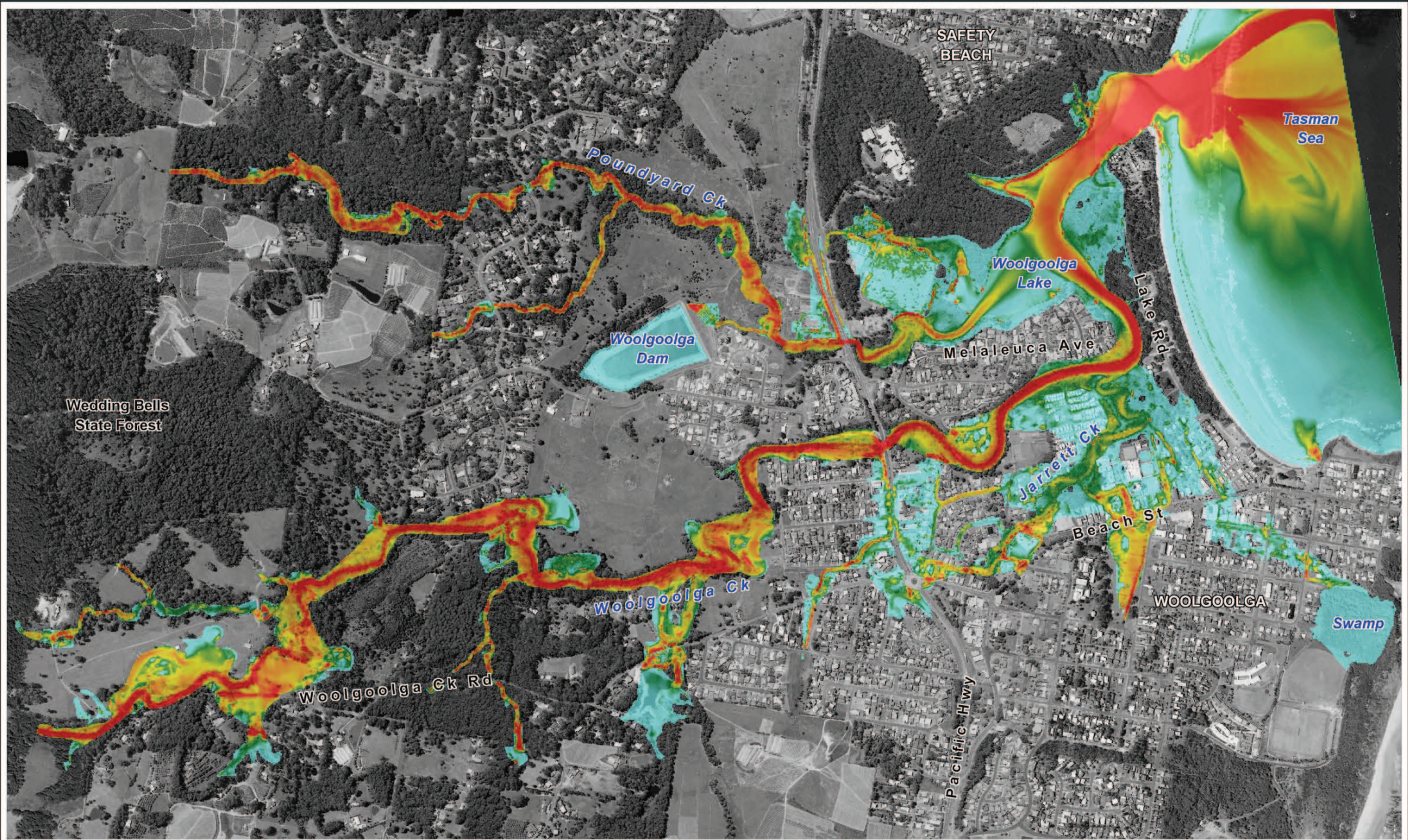
**LEGEND**

Peak Flood Depth (m)

	0.10 (lower depths mapped as same colour)
	0.25
	0.50
	1.00
	1.50 (higher depths mapped as same colour)

1m Interval Peak Flood Level Contours

Title: <b>Woolgoolga Flood Study</b> <b>2% AEP Modelled Peak Flood Depths and Water Levels</b>		Figure: <b>A-7</b>	Rev: <b>A</b>
BMT WBM endeavours to ensure that the information provided in this map is correct at the time of publication. BMT WBM does not warrant, guarantee or make representations regarding the currency and accuracy of information contained in this map.		<p>Approx. Scale</p>	
Filepath : K:\N2245_Woolgoolga_Flood_Study\MapInfo\Workspaces\DRG_107_120507_2%AEP_Depths.WOR			
<p><b>BMT WBM</b> www.bmtwbm.com.au</p>			



Title:  
**Woolgoolga Flood Study**  
**2% AEP Modelled Peak Flood Velocities**

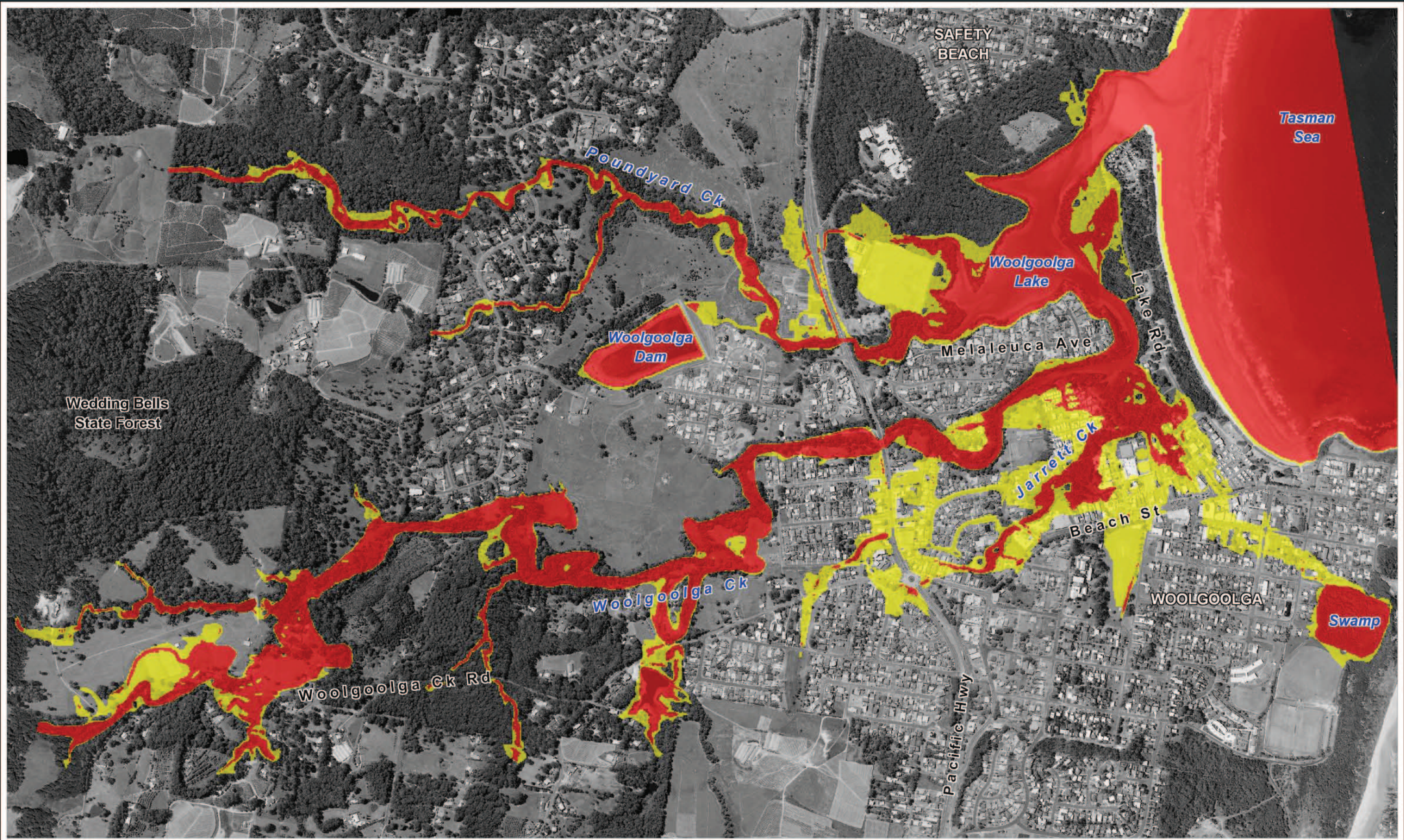
BMT WBM endeavours to ensure that the information provided in this map is correct at the time of publication. BMT WBM does not warrant, guarantee or make representations regarding the currency and accuracy of information contained in this map.



Figure: <b>A-8</b>	Rev: <b>A</b>
-----------------------	------------------




Filepath : K:\N2245\_Woolgoolga\_Flood\_Study\MapInfo\Workspaces\DRG\_108\_120507\_2%AEP\_Velocities.WOR



**LEGEND**

Peak Flood Hazard

- low hazard
- high hazard

<p>Title:</p> <p><b>Woolgoolga Flood Study</b></p> <p><b>2% AEP Modelled Peak Flood Hazards</b></p> <p><small>BMT WBM endeavours to ensure that the information provided in this map is correct at the time of publication. BMT WBM does not warrant, guarantee or make representations regarding the currency and accuracy of information contained in this map.</small></p>	<p>0      250      500m</p> <p>Approx. Scale</p>	<p>Figure:</p> <p><b>A-9</b></p>	<p>Rev:</p> <p><b>A</b></p>
<p>Filepath : K:\N2245_Woolgoolga_Flood_Study\MapInfo\Workspaces\DRG_109_120507_2%AEP_Hazards.WOR</p>		 <p><b>BMT WBM</b></p> <p><a href="http://www.bmtwbm.com.au">www.bmtwbm.com.au</a></p>	