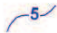


LEGEND

Peak Flood Depth (m)

0.10	(lower depths mapped as same colour)
0.25	
0.50	
1.00	
1.50	(higher depths mapped as same colour)


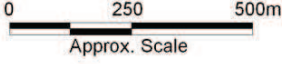
 1m Interval Peak Flood Level Contours

Title:
Woolgoolga Flood Study
1% AEP Modelled Peak Flood Depths and Water Levels


BMT WBM endeavours to ensure that the information provided in this map is correct at the time of publication. BMT WBM does not warrant, guarantee or make representations regarding the currency and accuracy of information contained in this map.

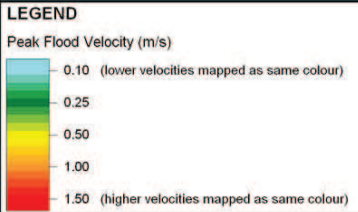
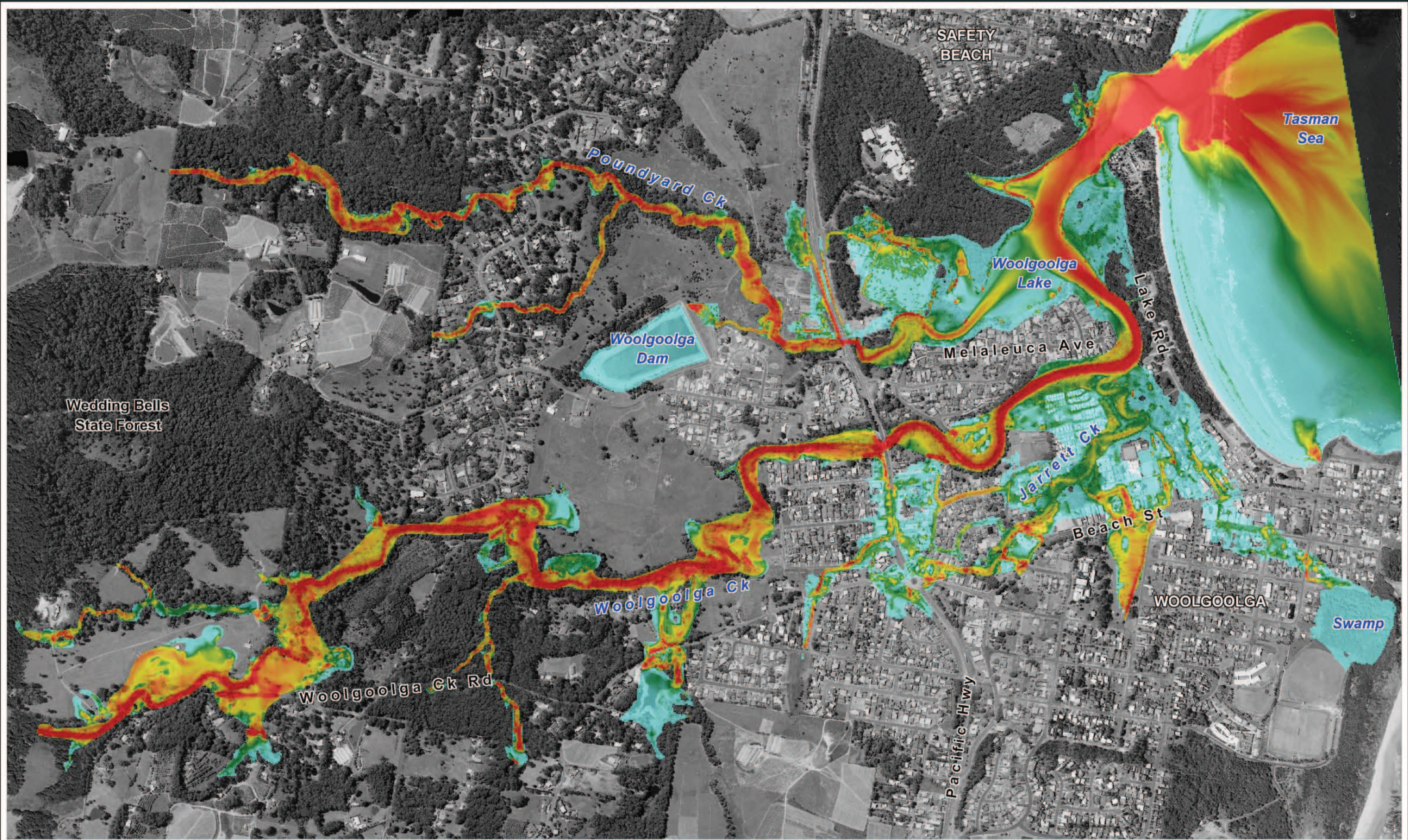
Figure: **A-10**

Rev: **A**

  Approx. Scale

Filepath : K:\N2245_Woolgoolga_Flood_Study\MapInfo\Workspaces\DRG_110_120507_1%AEP_Depths.WOR

 **BMT WBM**
www.bmtwbm.com.au



Title:
Woolgoolga Flood Study
1% AEP Modelled Peak Flood Velocities

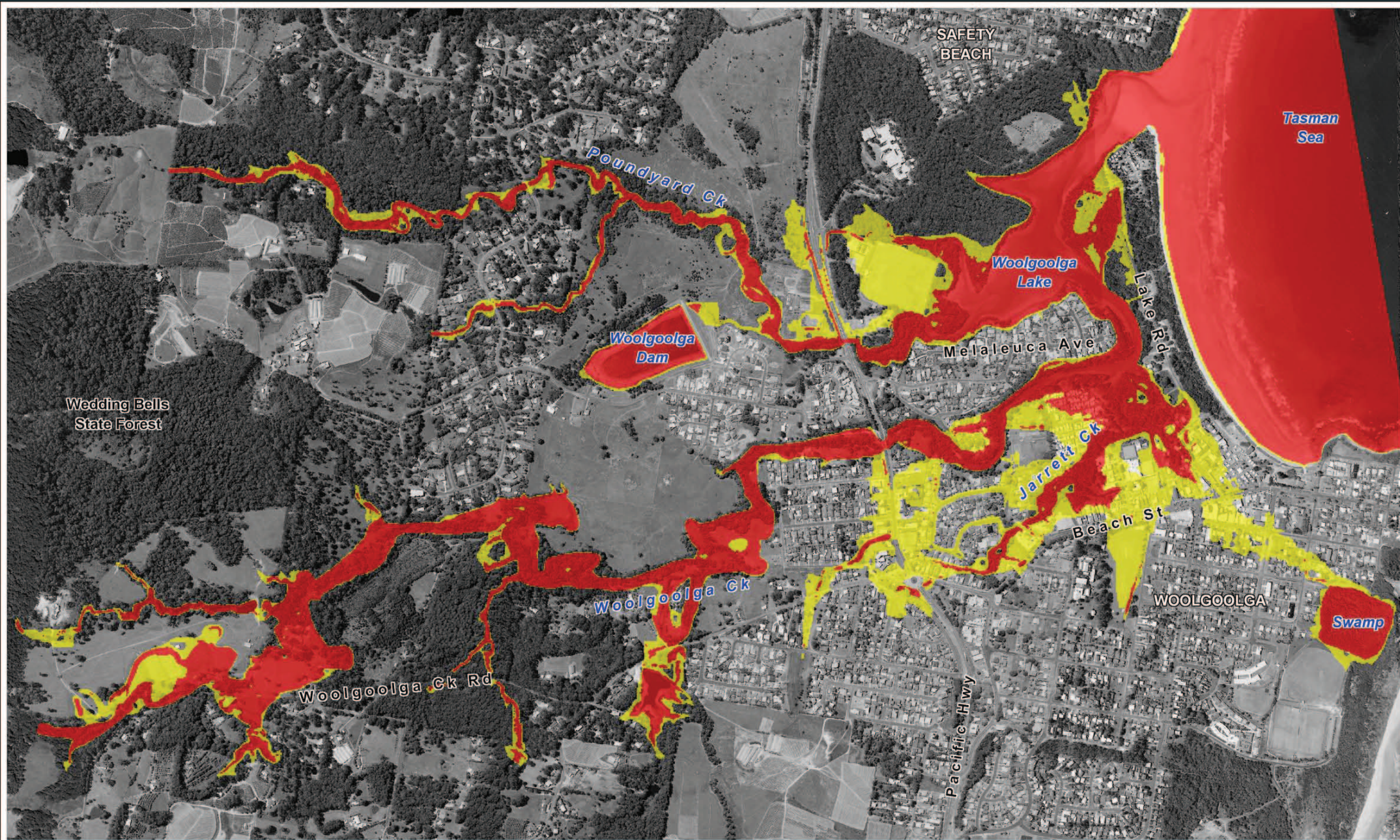
BMT WBM endeavours to ensure that the information provided in this map is correct at the time of publication. BMT WBM does not warrant, guarantee or make representations regarding the currency and accuracy of information contained in this map.



Figure: A-11	Rev: A
------------------------	------------------



Filepath : K:\N2245_Woolgoolga_Flood_Study\MapInfo\Workspaces\DRG_111_120507_1% AEP_Velocities.WOR



LEGEND

- Peak Flood Hazard
- low hazard
 - high hazard

Title:
Woolgoolga Flood Study
1% AEP Modelled Peak Flood Hazards

BMT WBM endeavours to ensure that the information provided in this map is correct at the time of publication. BMT WBM does not warrant, guarantee or make representations regarding the currency and accuracy of information contained in this map.

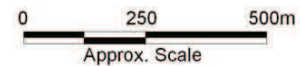


Figure:
A-12

Rev:
A



Filepath : K:\N2245_Woolgoolga_Flood_Study\MapInfo\Workspaces\DRG_112_120507_1% AEP_Hazards.WOR