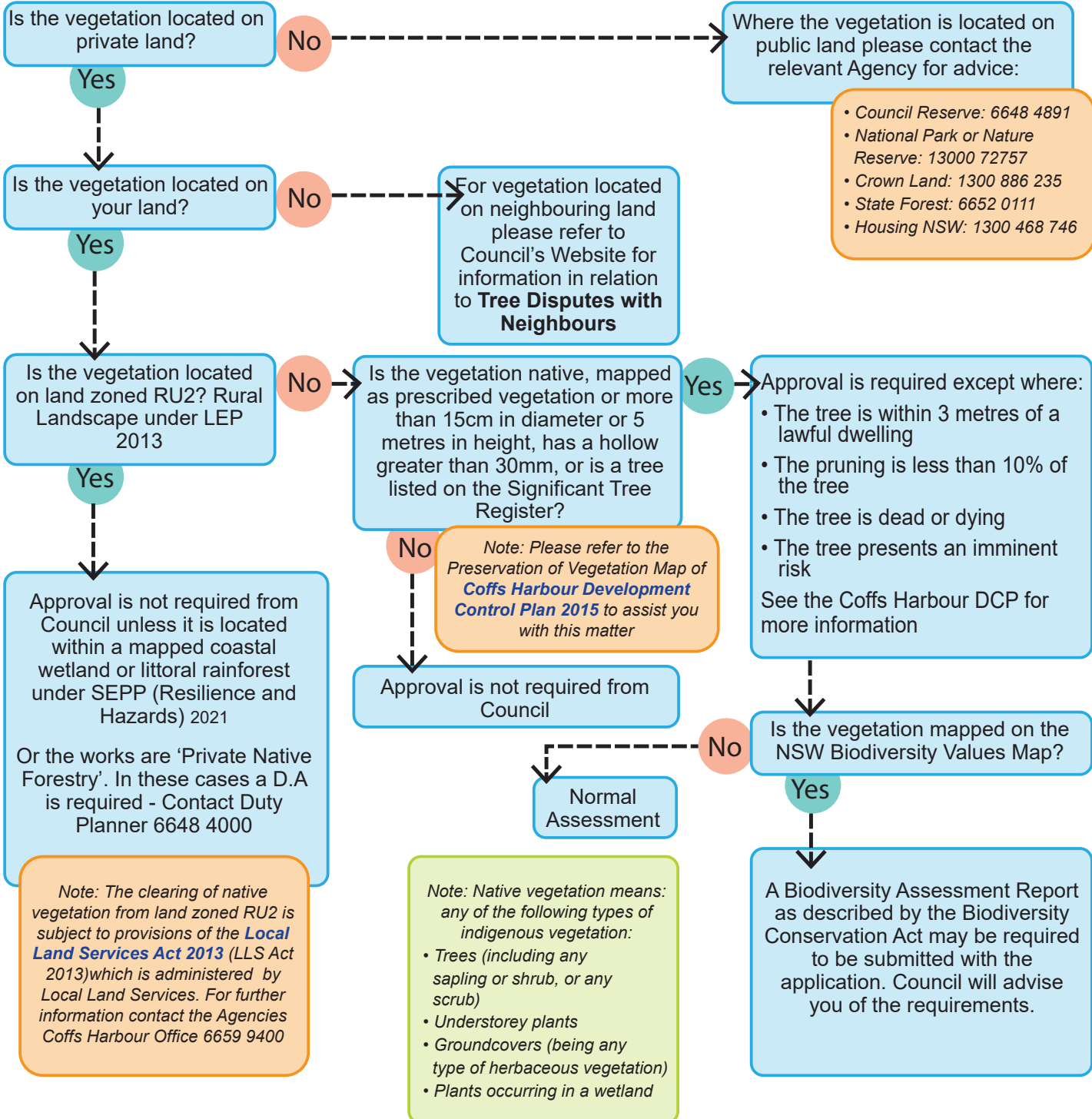


REMOVING NATIVE VEGETATION FACT SHEET



This process is for native vegetation removal not associated with an activity requiring Development Consent. When an activity requires consent, e.g. building a house, the vegetation removal will be assessed as part of the Development Application (regardless of the land use zone).

First check the RFS 10/50 online tool for exemptions to this process:
www.rfs.nsw.gov.au/plan-and-prepare/1050-vegetation-clearing/tool#tool



Exemptions apply for certain activities authorised under the [Biodiversity Conservation Act 2016](#), [Rural Fires Act 1997](#), activities within a State Forest or on land reserved under [Forestry Act 1916](#), any action authorised under the [Electricity Supply Act 1995](#), the [Roads Act 1993](#) or the [Surveying and Spatial Information Act 2002](#) or any noxious weeds. Certain exemptions also apply for Educational Establishments. Please refer to Coffs Harbour Development Control Plan 2015 for further information.