

LEGEND

Peak Flood Depth (m)

0.10	(lower depths mapped as same colour)
0.25	
0.50	
1.00	
1.50	(higher depths mapped as same colour)

5 1m Interval Peak Flood Level Contours

Title:
Woolgoolga Flood Study
PMF Modelled Peak Flood Depths and Water Levels

BMT WBM endeavours to ensure that the information provided in this map is correct at the time of publication. BMT WBM does not warrant, guarantee or make representations regarding the currency and accuracy of information contained in this map.

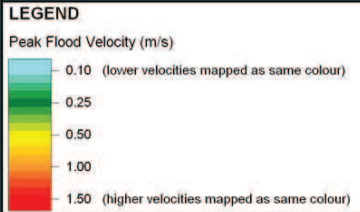
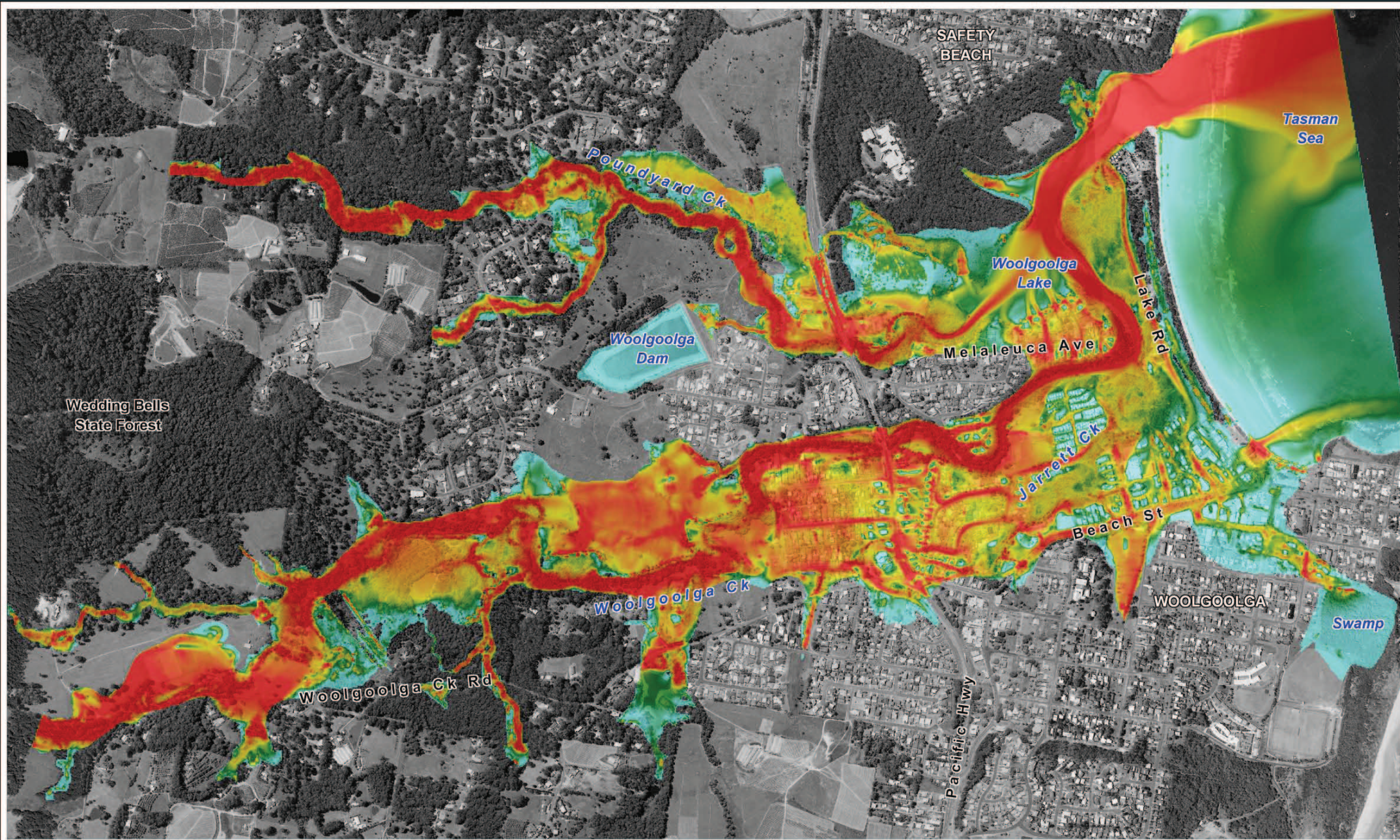
Figure:
A-16

Rev:
A

0 250 500m
 Approx. Scale

Filepath : K:\N2245_Woolgoolga_Flood_Study\MapInfo\Workspaces\DRG_116_120507_PMF_Depths.WOR

BMT WBM
 www.bmtwbm.com.au



Title:
Woolgoolga Flood Study
PMF Modelled Peak Flood Velocities

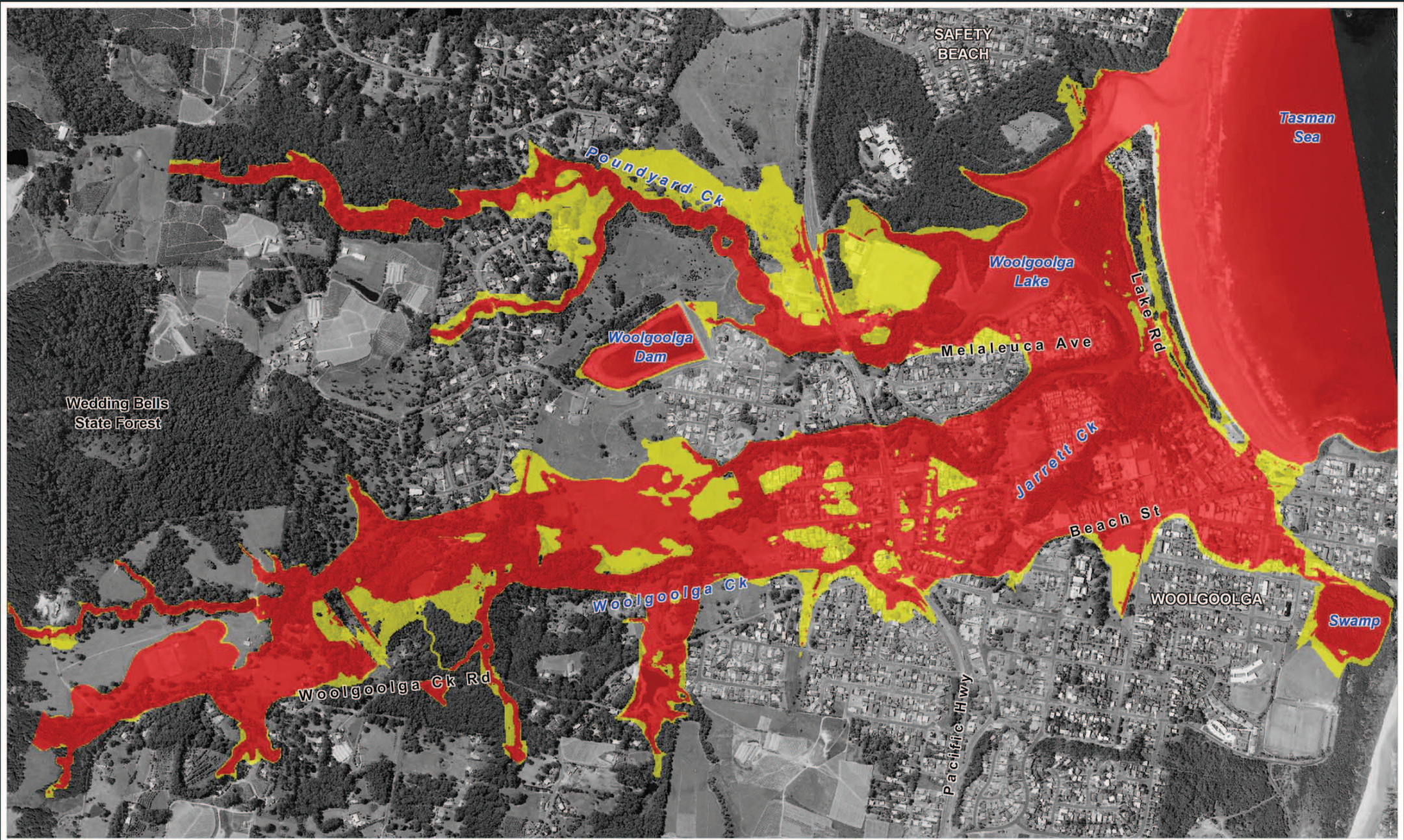
BMT WBM endeavours to ensure that the information provided in this map is correct at the time of publication. BMT WBM does not warrant, guarantee or make representations regarding the currency and accuracy of information contained in this map.



Figure: A-17	Rev: A
------------------------	------------------




Filepath : K:\N2245_Woolgoolga_Flood_Study\MapInfo\Workspaces\DRG_117_120507_PMF_Velocities.WOR

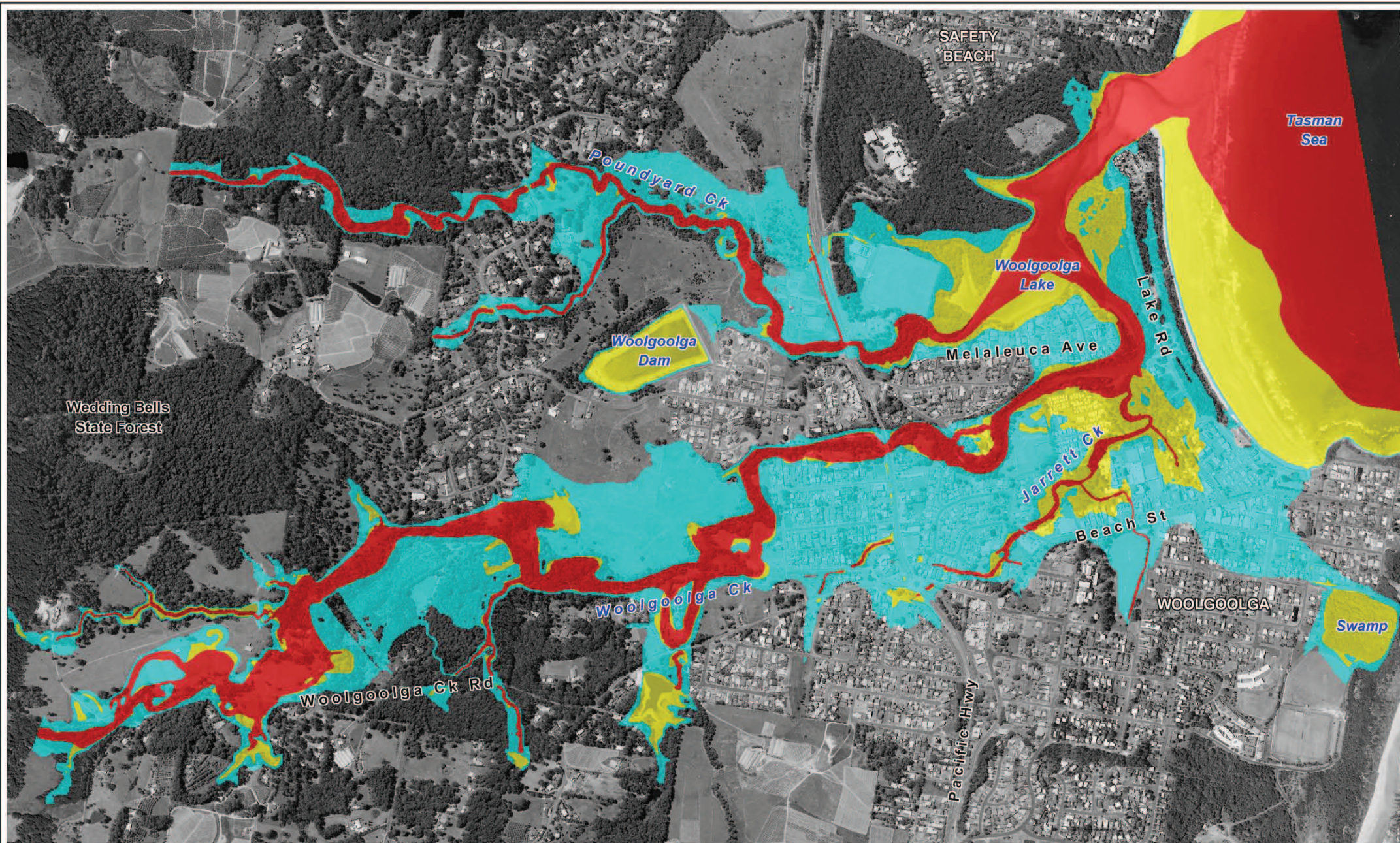


LEGEND

Peak Flood Hazard

- low hazard
- high hazard

<p>Title:</p> <p>Woolgoolga Flood Study</p> <p>PMF Modelled Peak Flood Hazards</p> <p><small>BMT WBM endeavours to ensure that the information provided in this map is correct at the time of publication. BMT WBM does not warrant, guarantee or make representations regarding the currency and accuracy of information contained in this map.</small></p>	<p>Figure:</p> <p>A-18</p>	<p>Rev:</p> <p>A</p>	<p style="text-align: center;">N</p> <p style="text-align: center;">0 250 500m</p> <p style="text-align: center;">Approx. Scale</p>	 <p>BMT WBM</p> <p><small>www.bmtwbm.com.au</small></p>
<p>Filepath : K:\N2245_Woolgoolga_Flood_Study\MapInfo\Workspaces\DRG_118_120507_PMF_Hazards.WOR</p>				



LEGEND

Hydraulic Categorisation

- Flood Fringe (PMF extent)
- Flood Storage (peak flood depth >0.5m at the 1% AEP event)
- Floodway (peak velocity * depth product >0.3 at the 1% AEP event)

Title:

**Woolgoolga Flood Study
Hydraulic Categorisation**

BMT WBM endeavours to ensure that the information provided in this map is correct at the time of publication. BMT WBM does not warrant, guarantee or make representations regarding the currency and accuracy of information contained in this map.

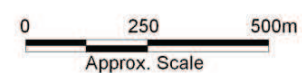


Figure:
A-19

Rev:
A



Filepath : K:\N2245_Woolgoolga_Flood_Study\MapInfo\Workspaces\DRG_119_120507_Hydraulic_Categorisation.WOR