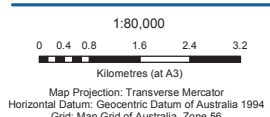
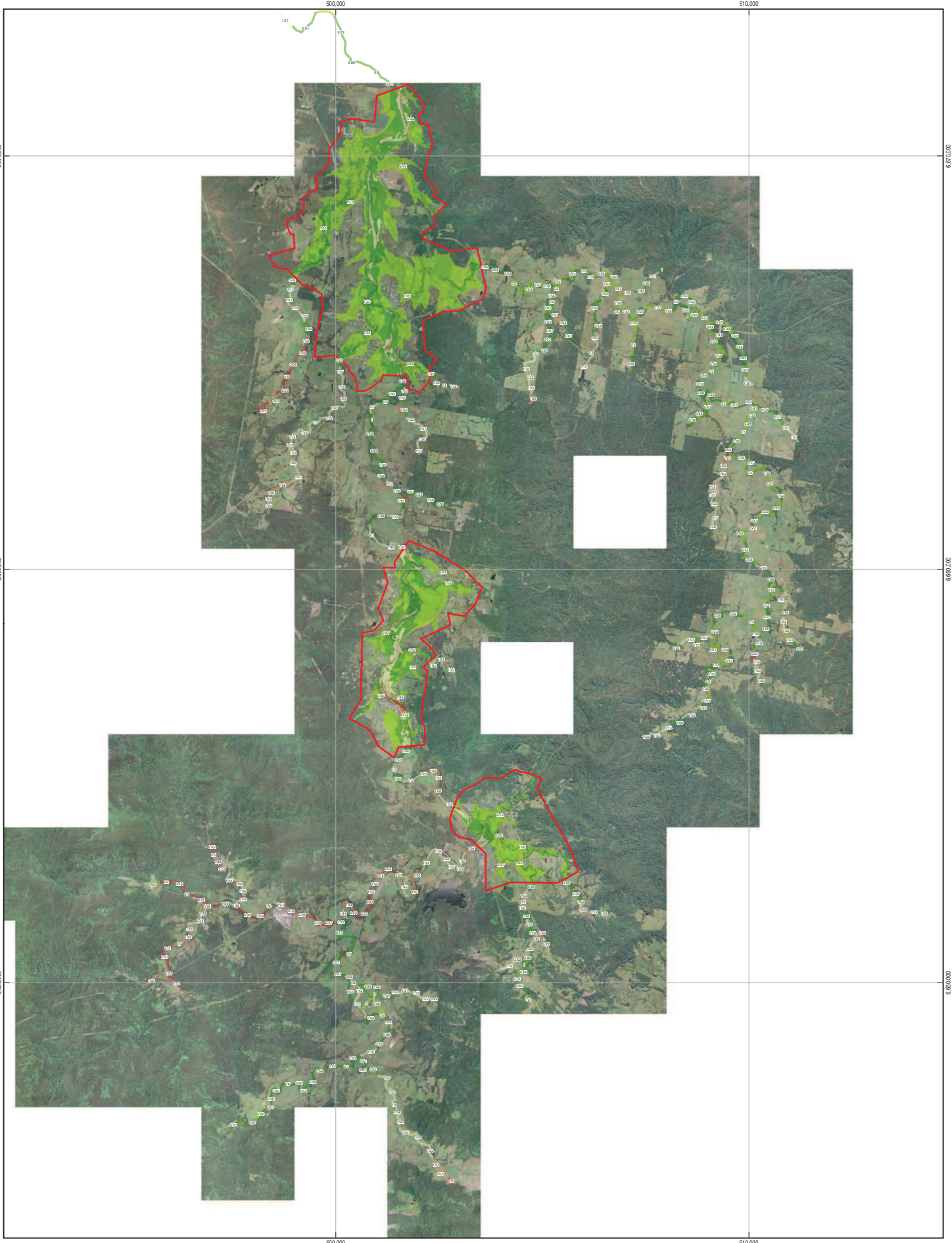


Coffs Harbour City Council
 UPPER ORARA RIVER FLOOD STUDY
Floodmap
0.2% AEP Event

Job Number | 22-15606
 Revision | 1
 Date | 2012.04.26

Figure F.5a



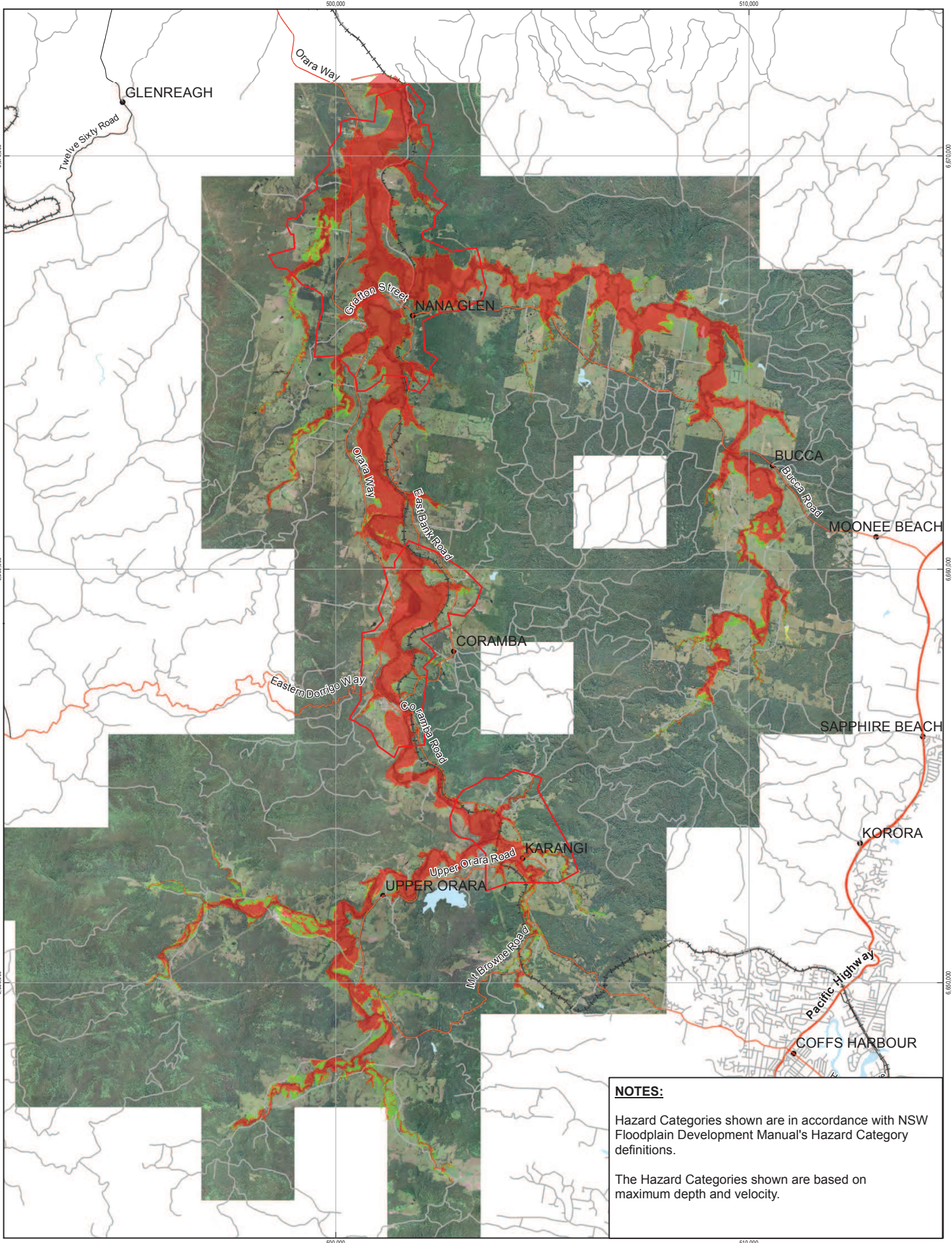
Legend:

Velocity (m/s)	1.0 - 1.5	2D Modelling Extents
0 - 0.5	1.5 - 2.0	
0.5 - 1.0	Greater than 2	

Coffs Harbour City Council
UPPER ORARA RIVER FLOOD STUDY
Average Velocity
0.2% AEP Event

Job Number	22-15606
Revision	1
Date	2012.04.26

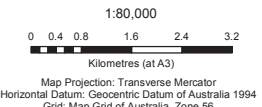
Figure F.5b



NOTES:

Hazard Categories shown are in accordance with NSW Floodplain Development Manual's Hazard Category definitions.

The Hazard Categories shown are based on maximum depth and velocity.



Legend

Hazard categories

- 1 - Low Hazard
- 2 - Intermediate Hazard
- 3 - High Hazard

2D Modelling Extent

Coffs Harbour City Council Job Number 22-15606
 UPPER ORARA RIVER FLOOD STUDY Revision 1
 Date 2012.04.26

Provisional Flood Hazard
0.2% AEP Event

Figure F.5c