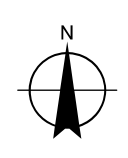
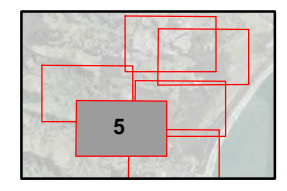


Paper Size A3
 0 37.5 75 150 225 300
 Metres
 Map Projection: Transverse Mercator
 Horizontal Datum: GDA 1994
 Grid: GDA 1994 MGA Zone 56

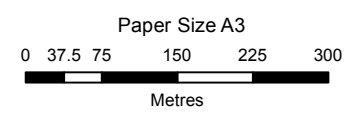
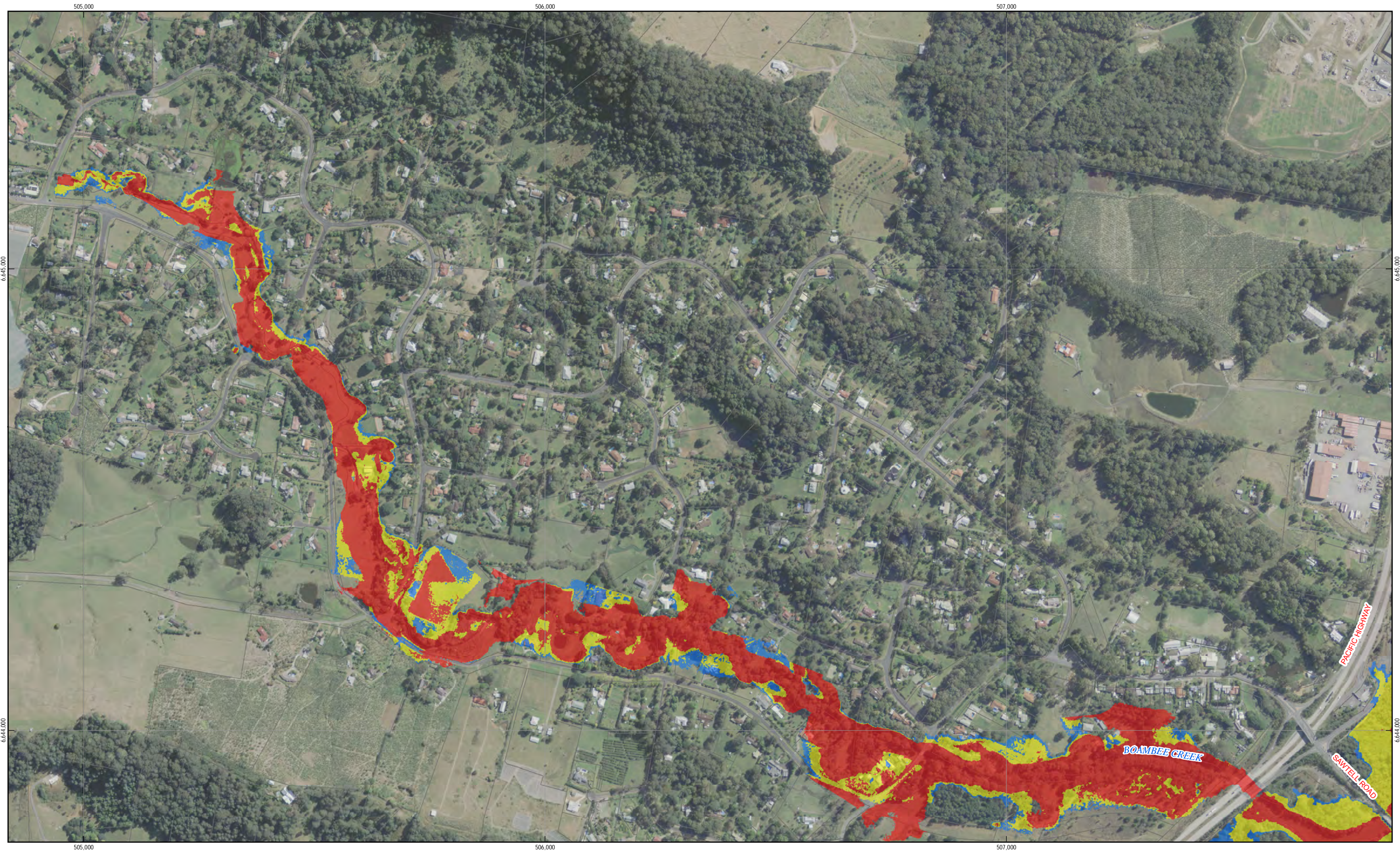


LEGEND
■ Flood Fringe
■ Flood Storage
■ Flood Way

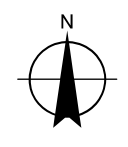


Coffs Harbour City Council	Job Number	22-16407
Boambee newports Creek	Revision	0
Floodplain Risk Management Study	Date	14 Jul 2016

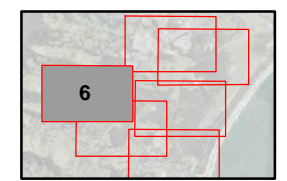
Hydraulic Categorisation 1% AEP Appendix B.C.5



Map Projection: Transverse Mercator
 Horizontal Datum: GDA 1994
 Grid: GDA 1994 MGA Zone 56

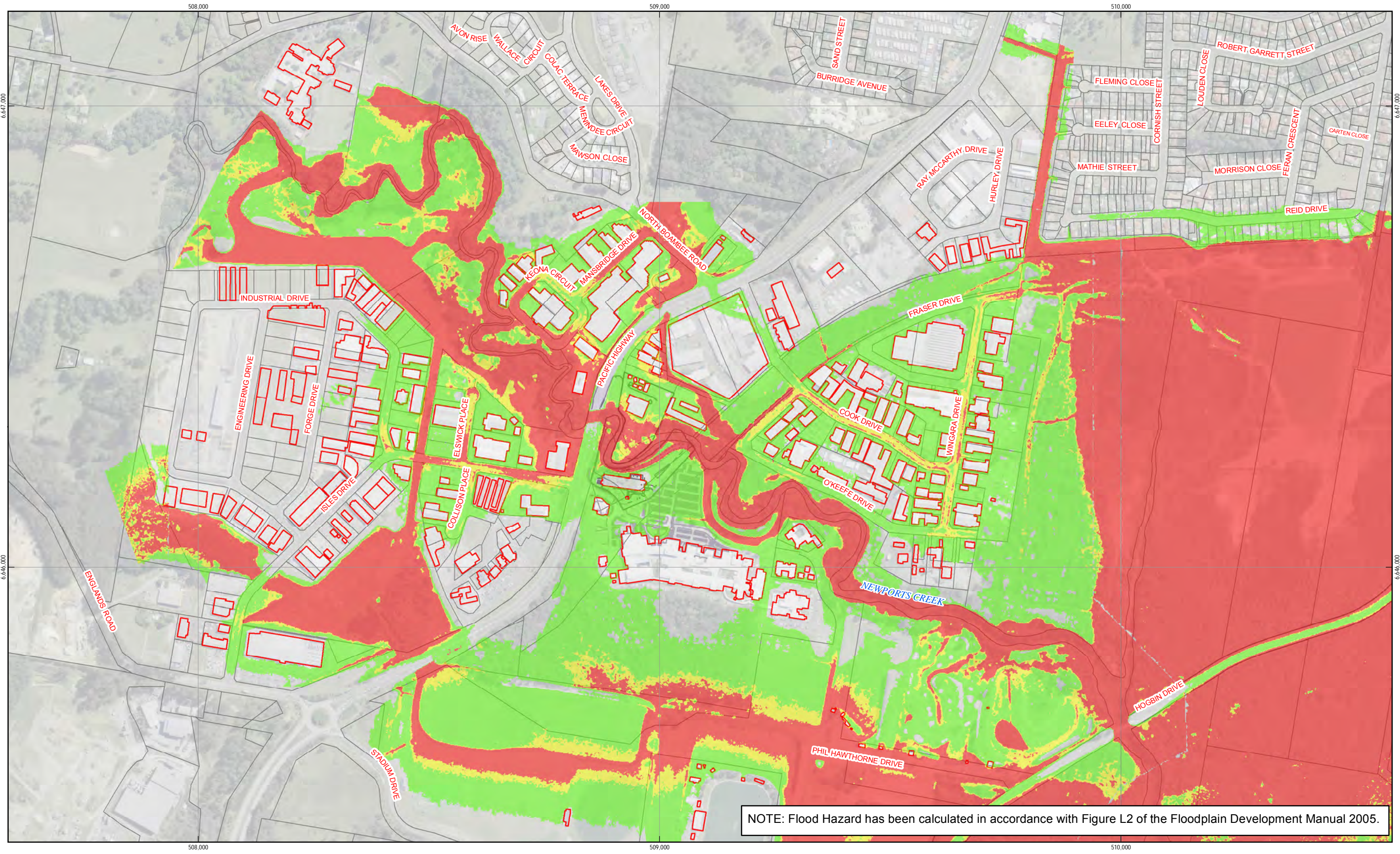


- LEGEND**
- Flood Fringe
 - Flood Storage
 - Flood Way

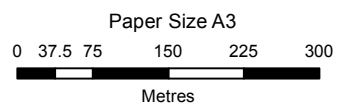


Coffs Harbour City Council	Job Number	22-16407
Boambee newports Creek	Revision	0
Floodplain Risk Management Study	Date	14 Jul 2016

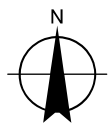
Hydraulic Categorisation 1% AEP Appendix B.C.6



NOTE: Flood Hazard has been calculated in accordance with Figure L2 of the Floodplain Development Manual 2005.

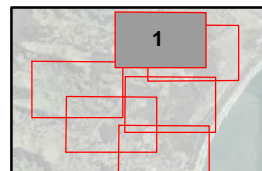


Map Projection: Transverse Mercator
Horizontal Datum: GDA 1994
Grid: GDA 1994 MGA Zone 56



LEGEND

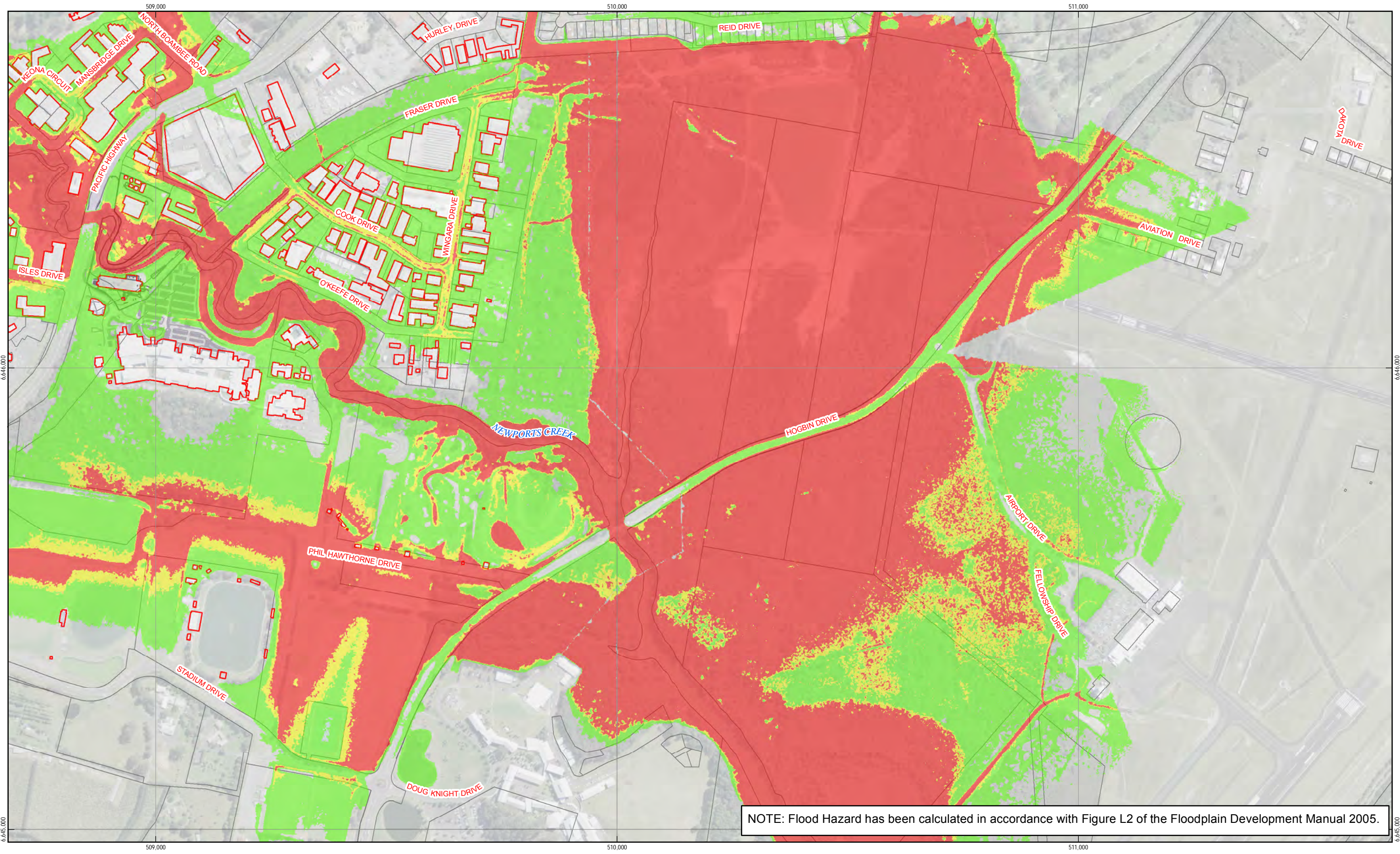
- Low hazard
- Intermediate Hazard
- High hazard



Coffs Harbour City Council
Boambee newports Creek
Floodplain Risk Management Study

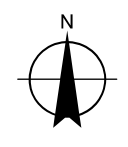
Job Number | 22-16407
Revision | 0
Date | 14 Jul 2016

Provisional Hydraulic Hazard
1% AEP
Appendix B.H.1

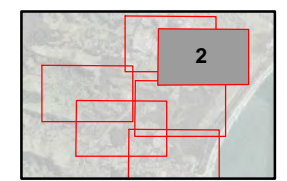


NOTE: Flood Hazard has been calculated in accordance with Figure L2 of the Floodplain Development Manual 2005.

Paper Size A3
 0 37.5 75 150 225 300
 Metres
 Map Projection: Transverse Mercator
 Horizontal Datum: GDA 1994
 Grid: GDA 1994 MGA Zone 56

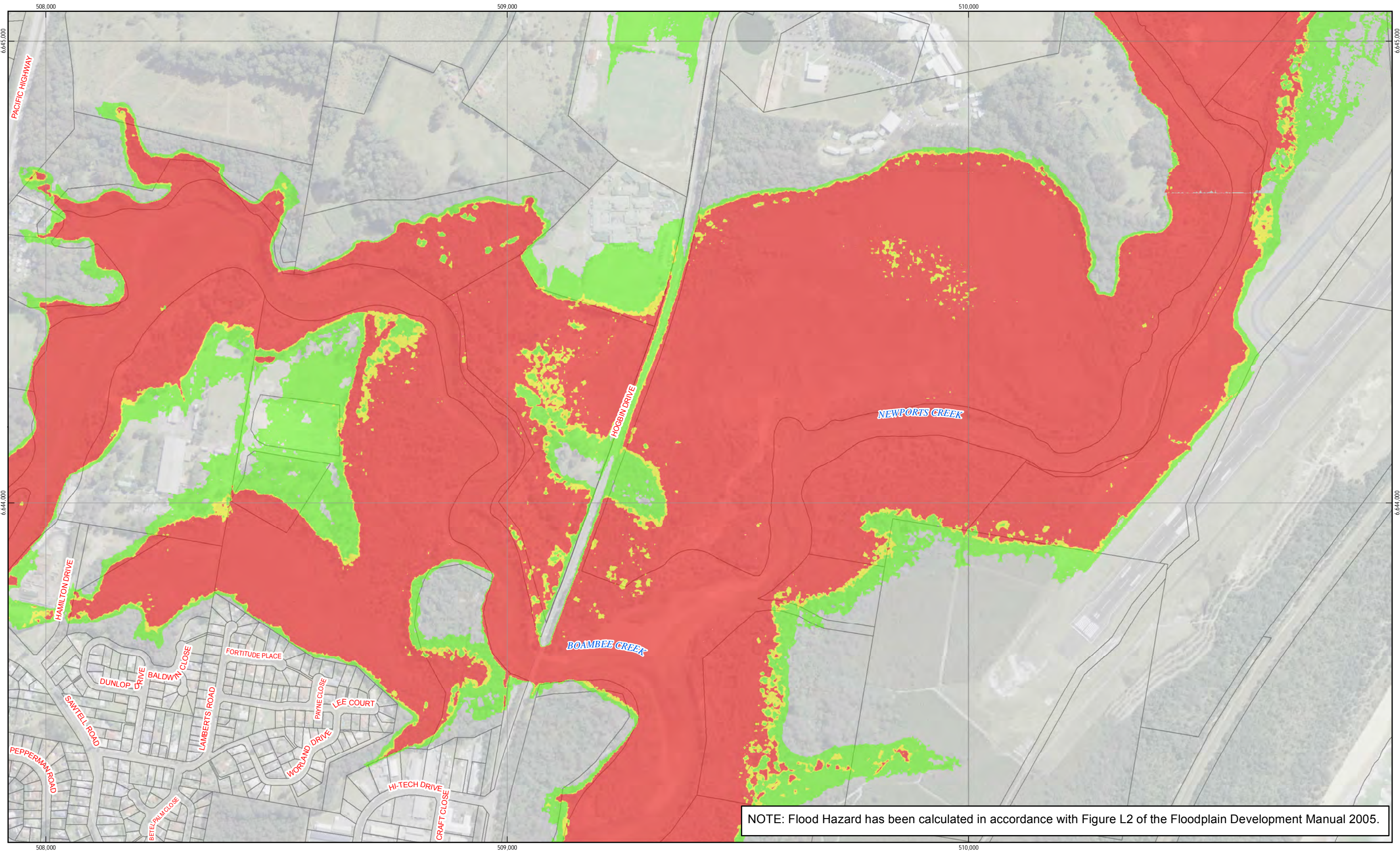


LEGEND
 Low hazard
 Intermediate Hazard
 High hazard



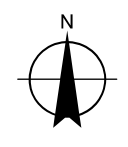
Coffs Harbour City Council
 Boambee newports Creek
 Floodplain Risk Management Study
 Job Number 22-16407
 Revision 0
 Date 14 Jul 2016

**Provisional Hydraulic Hazard
 1% AEP
 Appendix B.H.2**

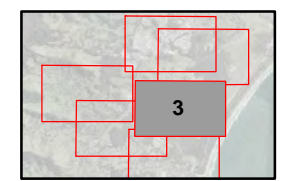


NOTE: Flood Hazard has been calculated in accordance with Figure L2 of the Floodplain Development Manual 2005.

Paper Size A3
 0 37.5 75 150 225 300
 Metres
 Map Projection: Transverse Mercator
 Horizontal Datum: GDA 1994
 Grid: GDA 1994 MGA Zone 56

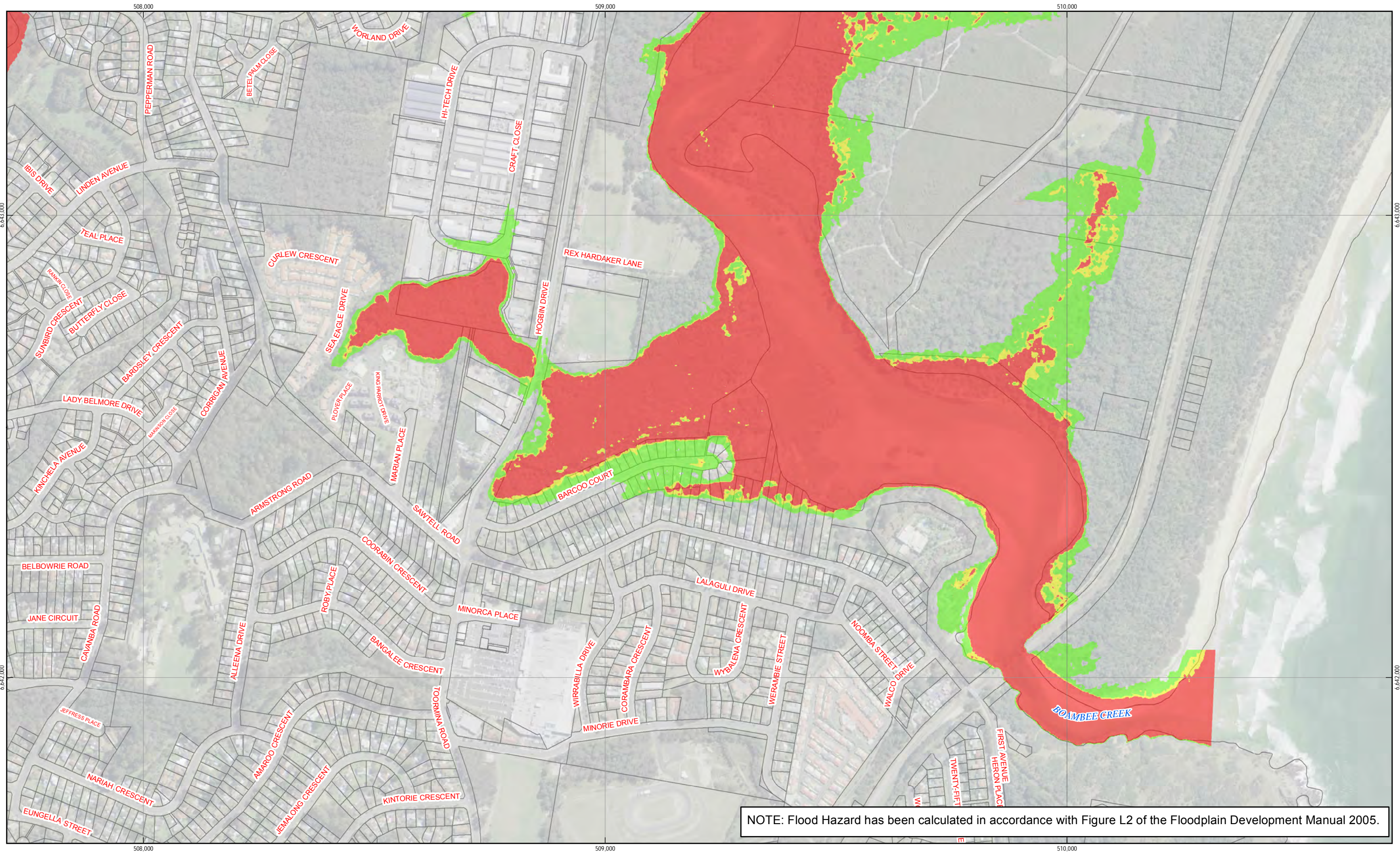


LEGEND
 Low hazard
 Intermediate Hazard
 High hazard

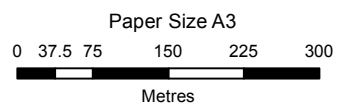


Coffs Harbour City Council	Job Number	22-16407
Boambie newports Creek	Revision	0
Floodplain Risk Management Study	Date	14 Jul 2016

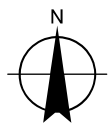
**Provisional Hydraulic Hazard
 1% AEP
 Appendix B.H.3**



NOTE: Flood Hazard has been calculated in accordance with Figure L2 of the Floodplain Development Manual 2005.

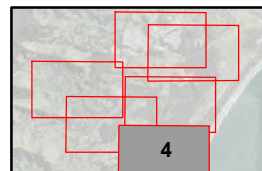


Map Projection: Transverse Mercator
Horizontal Datum: GDA 1994
Grid: GDA 1994 MGA Zone 56



LEGEND

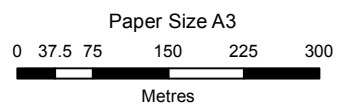
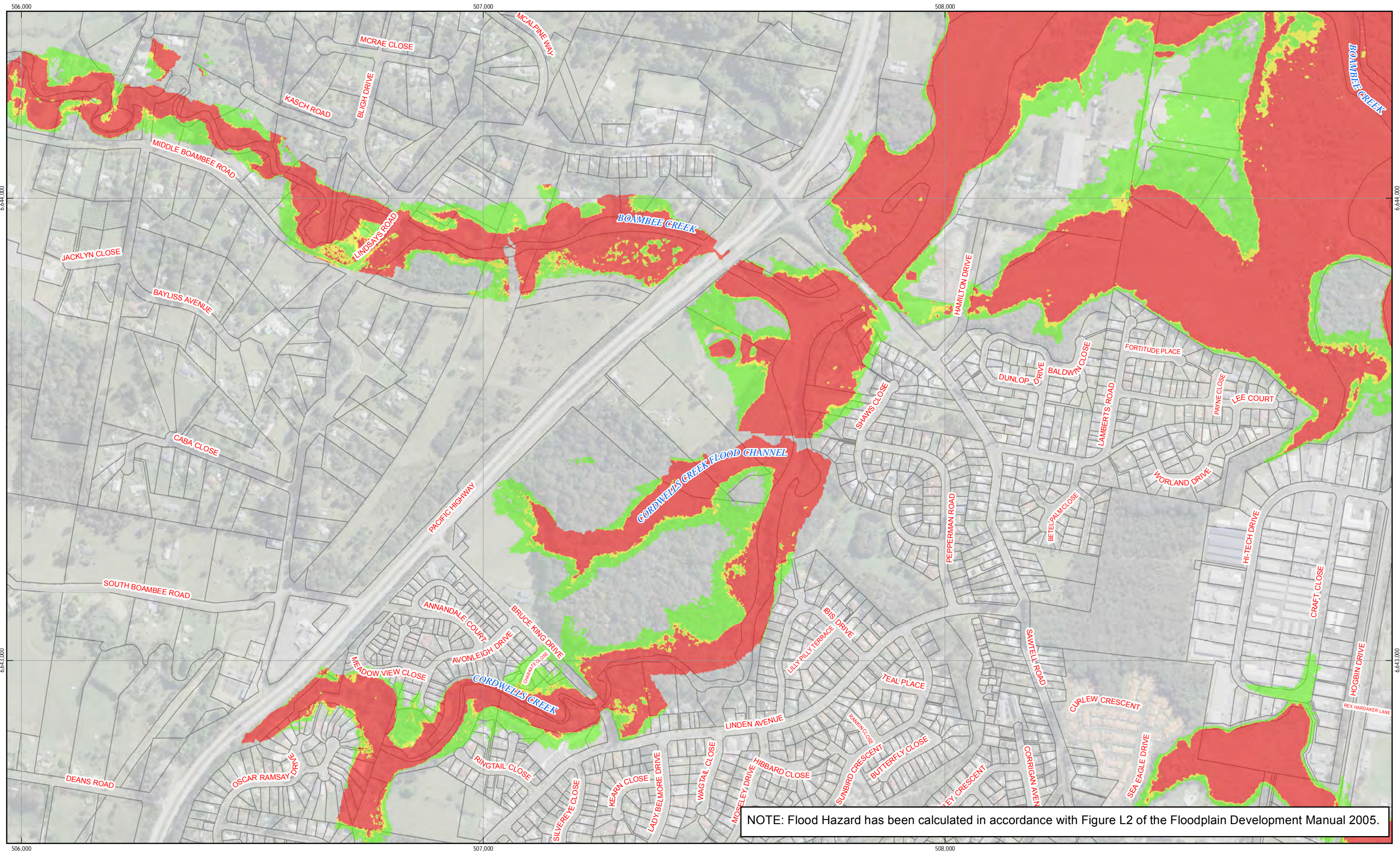
- Low hazard
- Intermediate Hazard
- High hazard



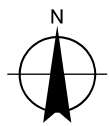
Coffs Harbour City Council
Boambee newports Creek
Floodplain Risk Management Study

Job Number | 22-16407
Revision | 0
Date | 14 Jul 2016




**Provisional Hydraulic Hazard
1% AEP
Appendix B.H.4**

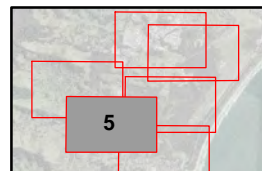


Map Projection: Transverse Mercator
Horizontal Datum: GDA 1994
Grid: GDA 1994 MGA Zone 56



LEGEND

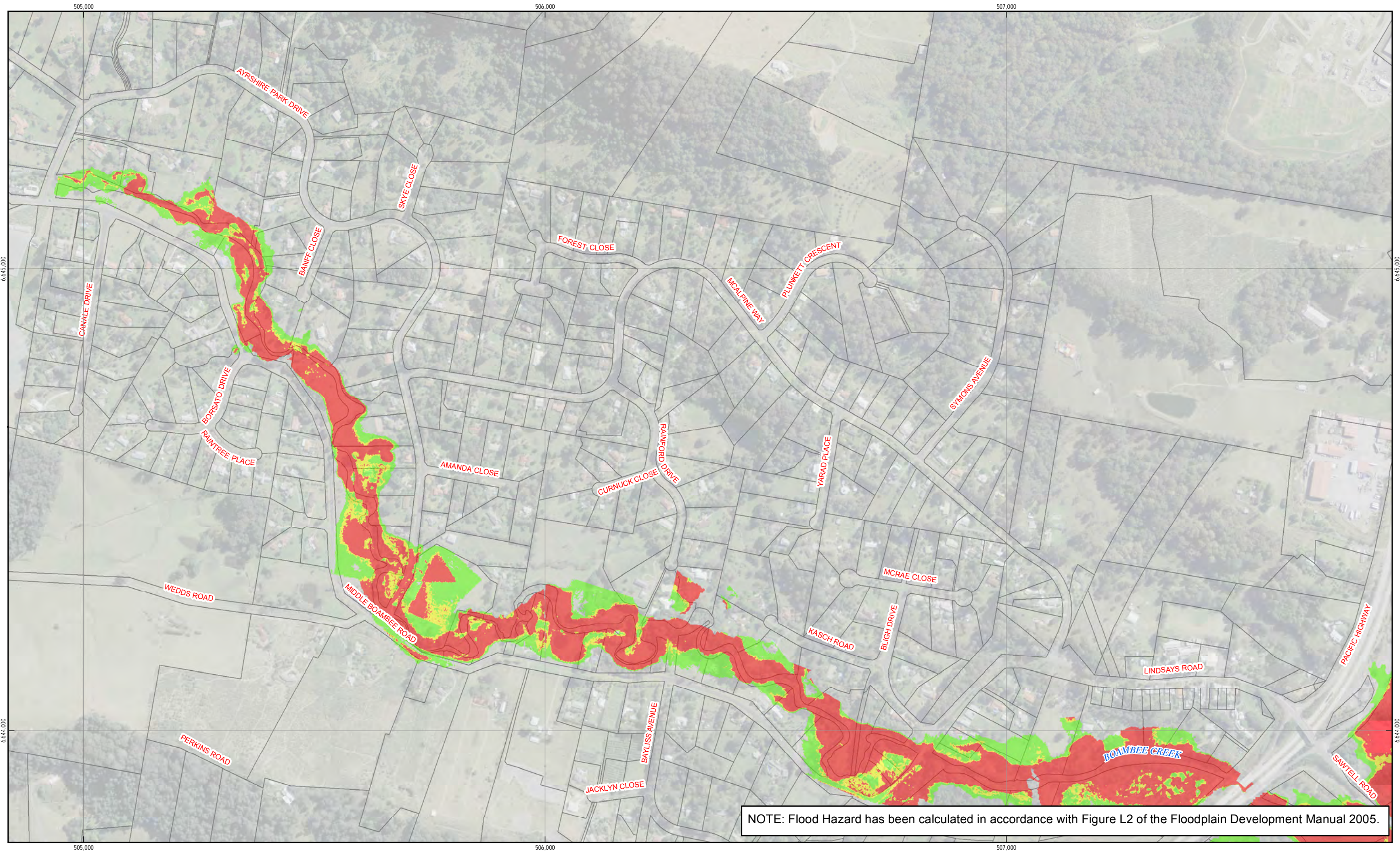
-  Low hazard
-  Intermediate Hazard
-  High hazard



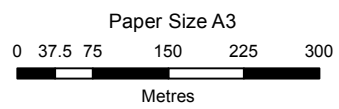
Coffs Harbour City Council
Boambee newports Creek
Floodplain Risk Management Study

Job Number | 22-16407
Revision | 0
Date | 14 Jul 2016

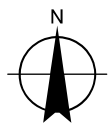
Provisional Hydraulic Hazard
1% AEP
Appendix B.H.5



NOTE: Flood Hazard has been calculated in accordance with Figure L2 of the Floodplain Development Manual 2005.

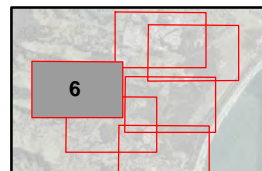


Map Projection: Transverse Mercator
Horizontal Datum: GDA 1994
Grid: GDA 1994 MGA Zone 56



LEGEND

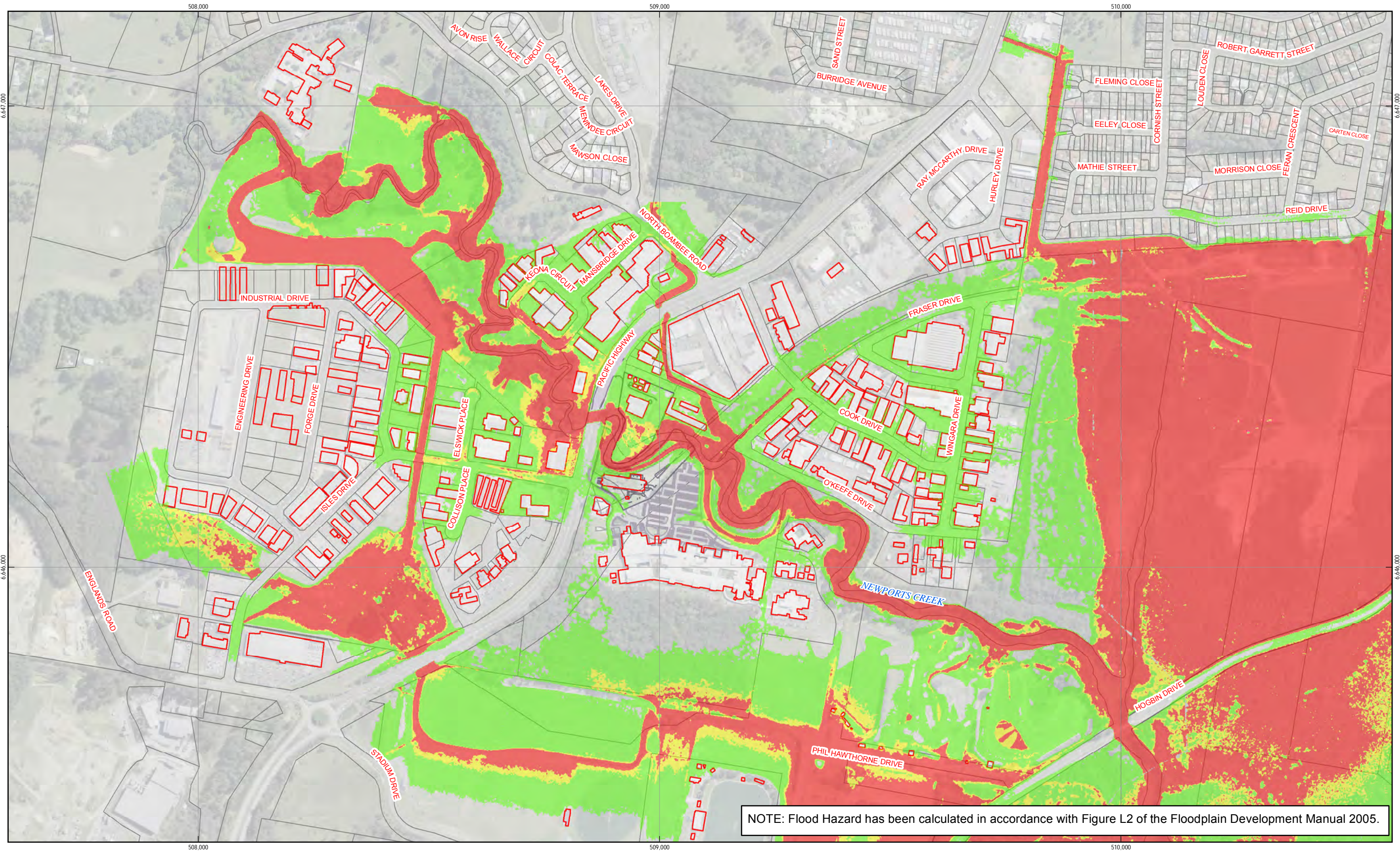
- Low hazard
- Intermediate Hazard
- High hazard



Coffs Harbour City Council
Boambee newports Creek
Floodplain Risk Management Study

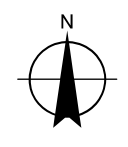
Job Number | 22-16407
Revision | 0
Date | 14 Jul 2016

**Provisional Hydraulic Hazard
1% AEP
Appendix B.H.6**

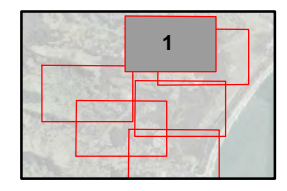


NOTE: Flood Hazard has been calculated in accordance with Figure L2 of the Floodplain Development Manual 2005.

Paper Size A3
 0 37.5 75 150 225 300
 Metres
 Map Projection: Transverse Mercator
 Horizontal Datum: GDA 1994
 Grid: GDA 1994 MGA Zone 56

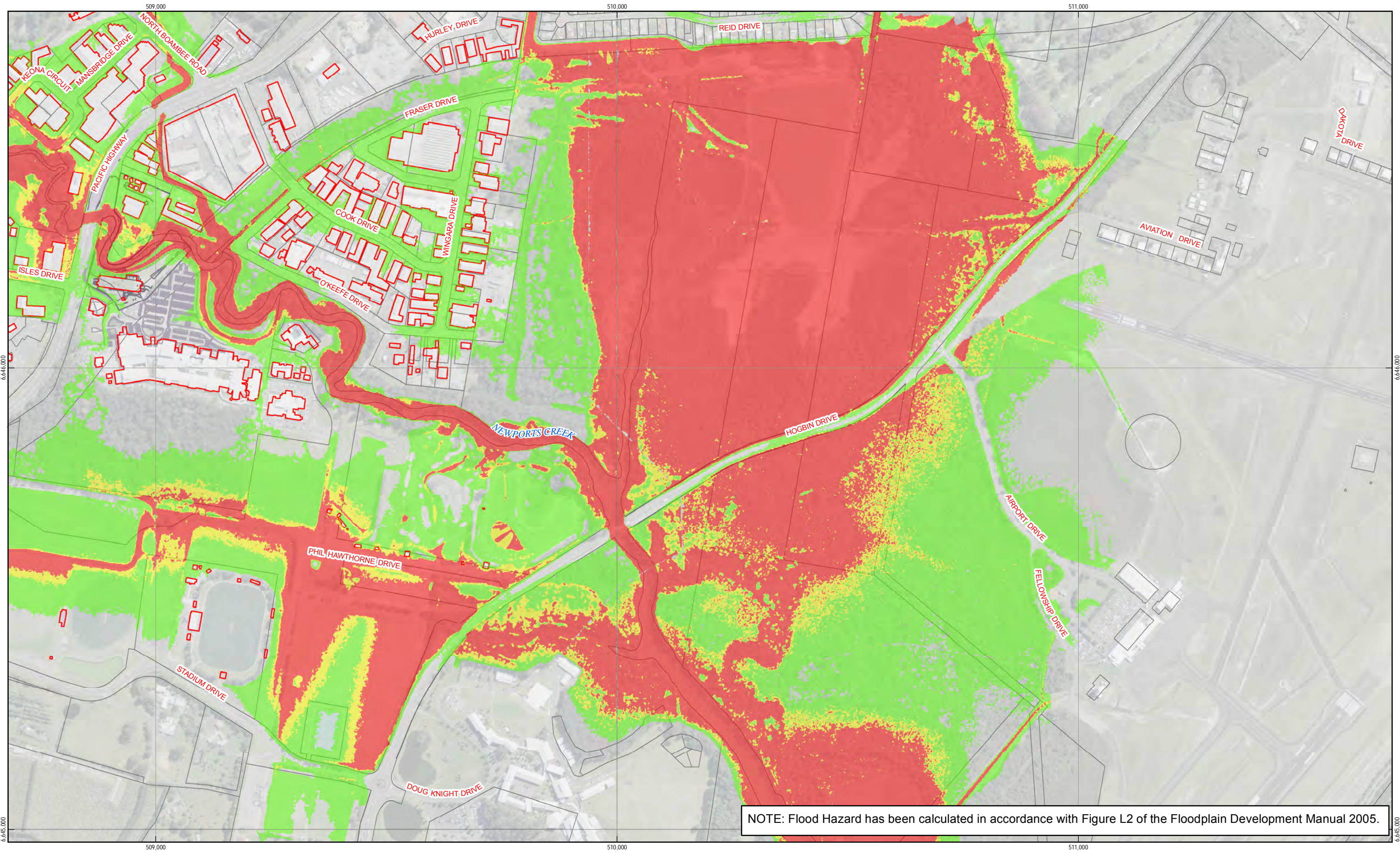


LEGEND
 Low Hazard
 Intermediate Hazard
 High Hazard



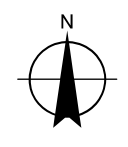
Coffs Harbour City Council
 Boambee newports Creek
 Floodplain Risk Management Study
 Job Number 22-16407
 Revision 0
 Date 14 Jul 2016




Provisional Hydraulic Hazard
 5% AEP
 Appendix B.H.7

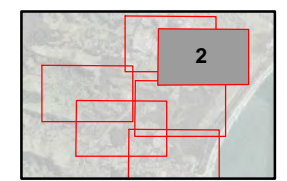


NOTE: Flood Hazard has been calculated in accordance with Figure L2 of the Floodplain Development Manual 2005.

Paper Size A3
 0 37.5 75 150 225 300
 Metres
 Map Projection: Transverse Mercator
 Horizontal Datum: GDA 1994
 Grid: GDA 1994 MGA Zone 56

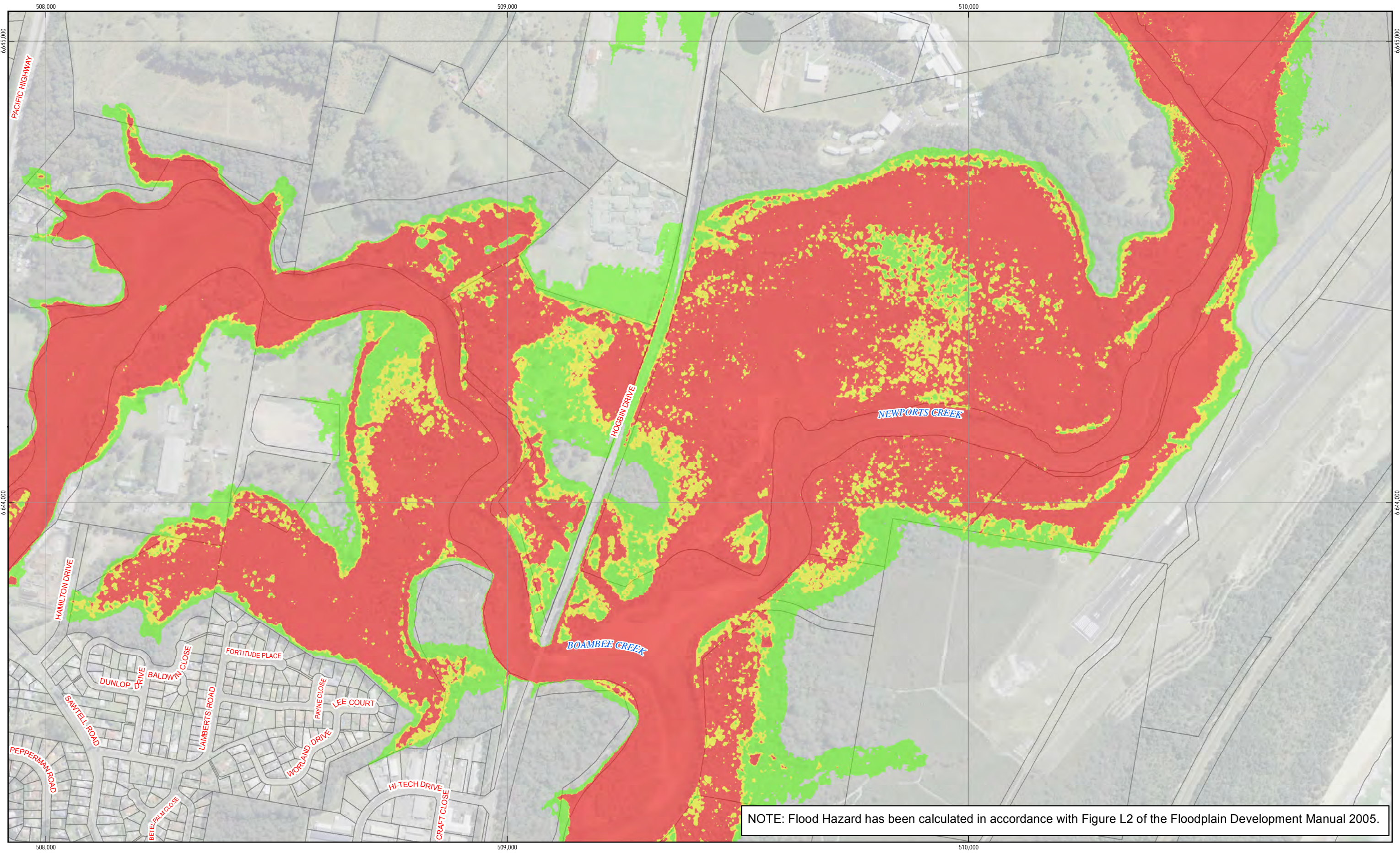


LEGEND
 Low Hazard
 Intermediate Hazard
 High Hazard

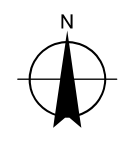





Coffs Harbour City Council	Job Number	22-16407
Boambee newports Creek	Revision	0
Floodplain Risk Management Study	Date	14 Jul 2016

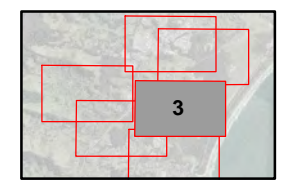
**Provisional Hydraulic Hazard
 5% AEP
 Appendix B.H.8**



Paper Size A3
 0 37.5 75 150 225 300
 Metres
 Map Projection: Transverse Mercator
 Horizontal Datum: GDA 1994
 Grid: GDA 1994 MGA Zone 56

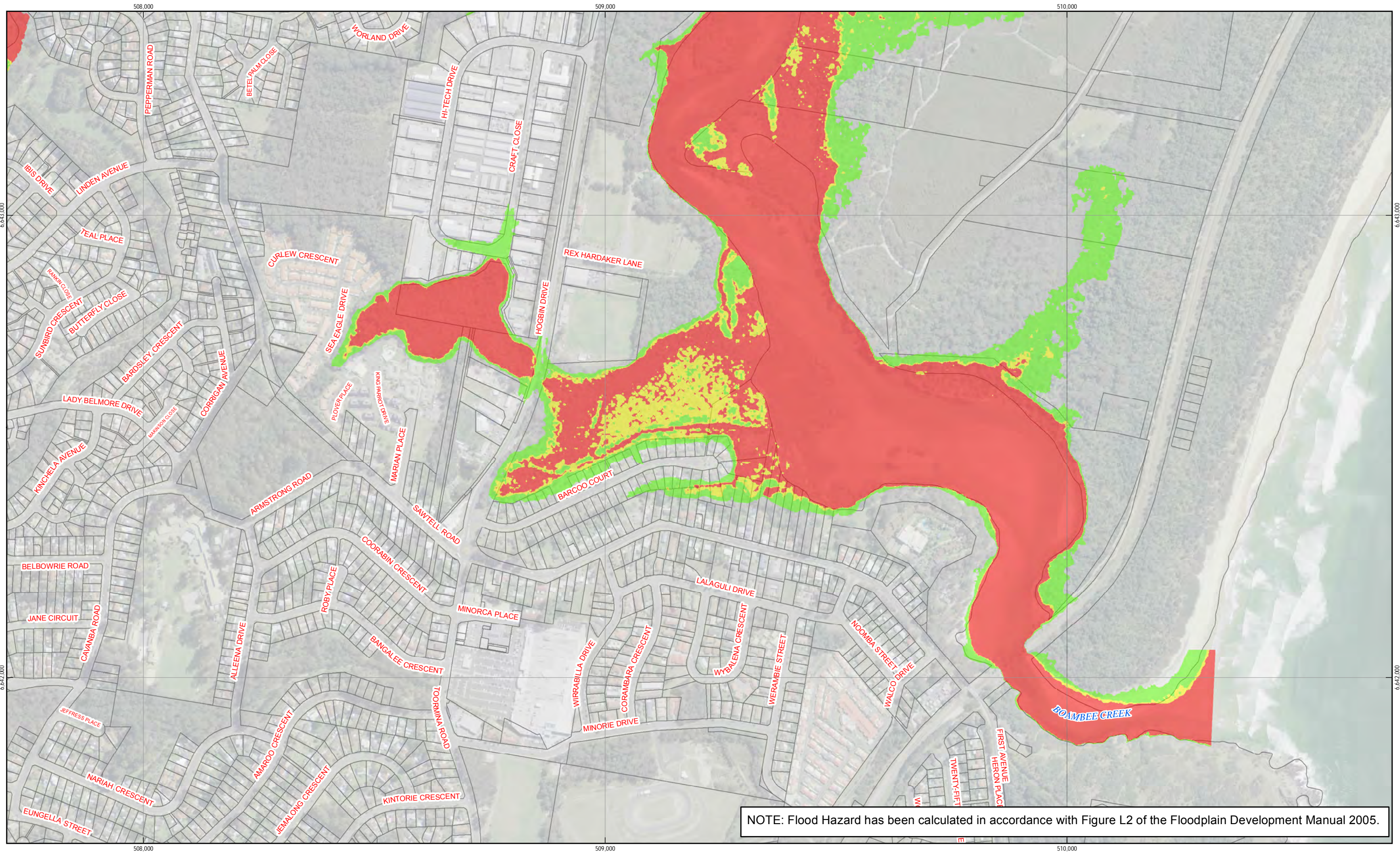


LEGEND
 Low Hazard
 Intermediate Hazard
 High Hazard

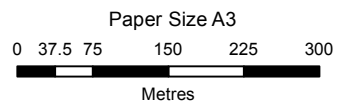


Coffs Harbour City Council
 Boambee newports Creek
 Floodplain Risk Management Study
**Provisional Hydraulic Hazard
 5% AEP
 Appendix B.H.9**

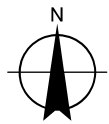
Job Number	22-16407
Revision	0
Date	14 Jul 2016



NOTE: Flood Hazard has been calculated in accordance with Figure L2 of the Floodplain Development Manual 2005.

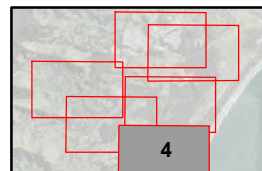


Map Projection: Transverse Mercator
Horizontal Datum: GDA 1994
Grid: GDA 1994 MGA Zone 56



LEGEND

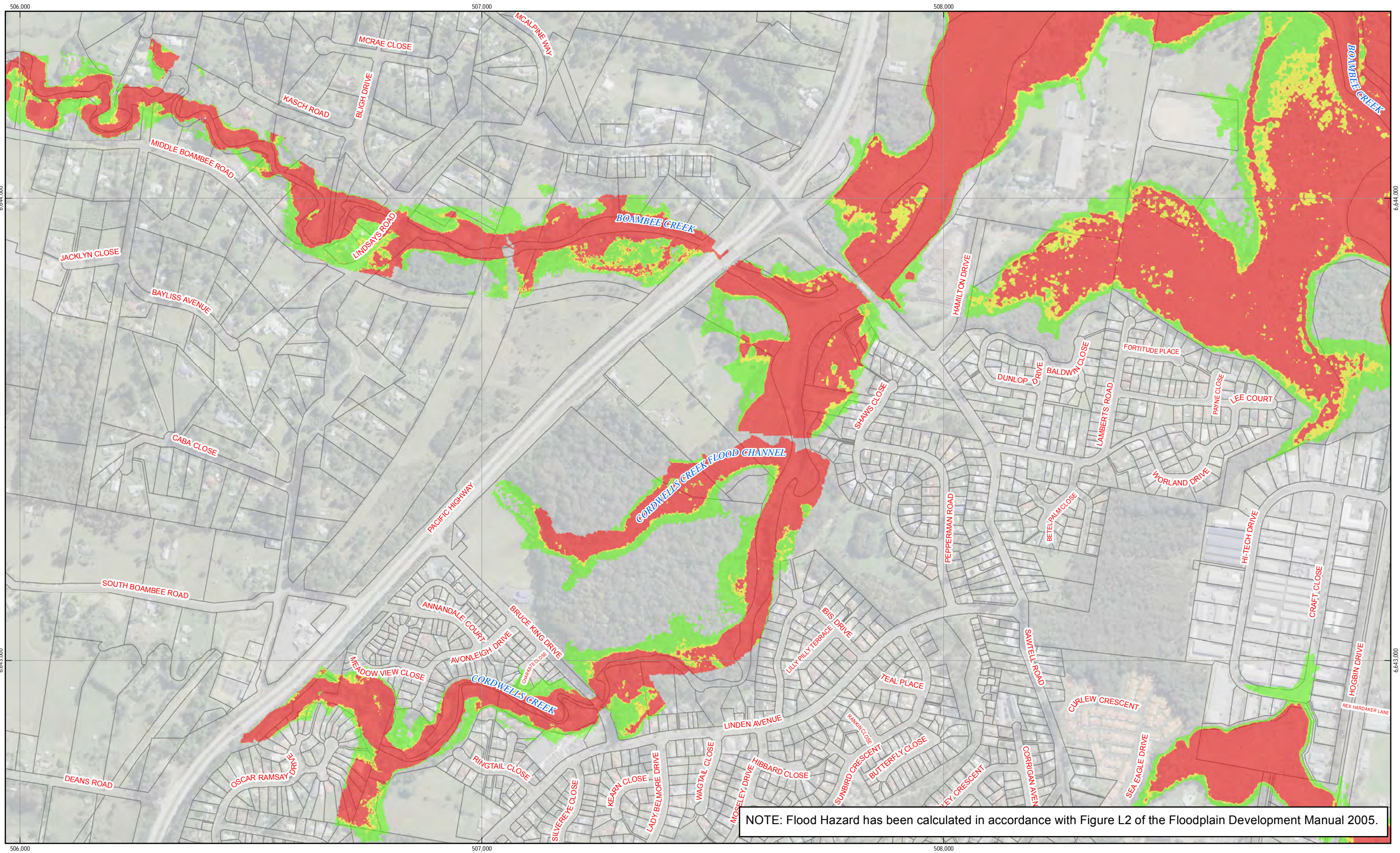
- Low Hazard
- Intermediate Hazard
- High Hazard



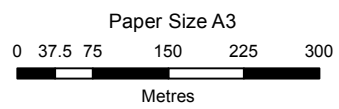
Coffs Harbour City Council
Boambie newports Creek
Floodplain Risk Management Study

Job Number | 22-16407
Revision | 0
Date | 14 Jul 2016

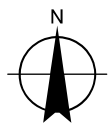
**Provisional Hydraulic Hazard
5% AEP
Appendix B.H.10**



NOTE: Flood Hazard has been calculated in accordance with Figure L2 of the Floodplain Development Manual 2005.

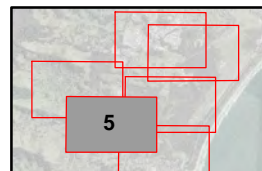


Map Projection: Transverse Mercator
Horizontal Datum: GDA 1994
Grid: GDA 1994 MGA Zone 56



LEGEND

- Low Hazard
- Intermediate Hazard
- High Hazard



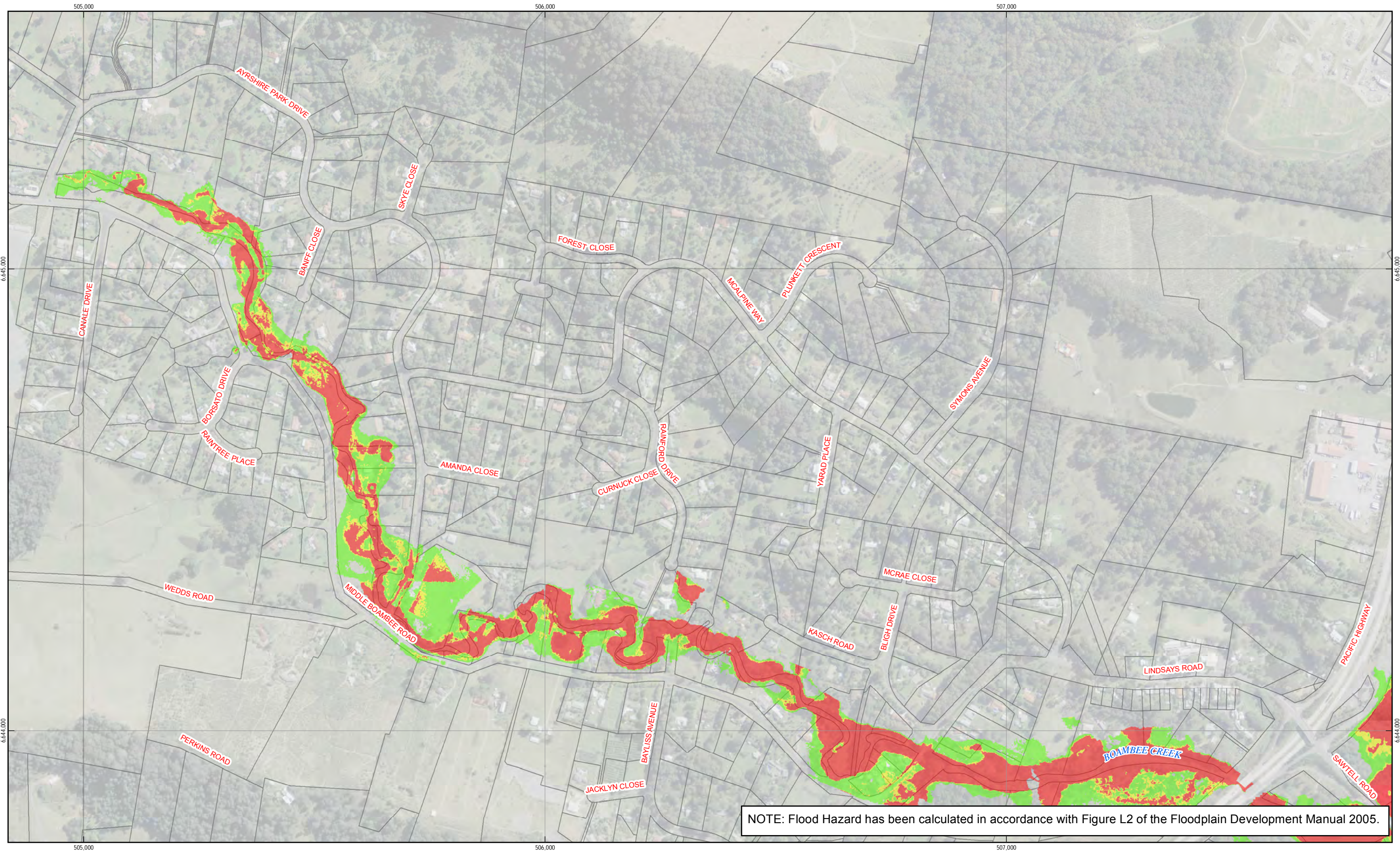
Coffs Harbour City Council
Boambee newports Creek
Floodplain Risk Management Study

Job Number	22-16407
Revision	0
Date	14 Jul 2016

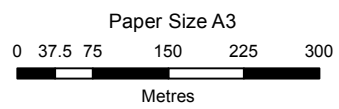
**Provisional Hydraulic Hazard
5% AEP
Appendix B.H.11**

G:\22\16407\GIS\Maps\Deliverables\22_16407_B_H_7_12_020yr_Provisional_Hydraulic_Hazard_Rev0.mxd

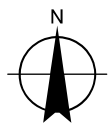
© 2016. Whilst every care has been taken to prepare this map, GHD (and LPI) make no representations or warranties about its accuracy, reliability, completeness or suitability for any particular purpose and cannot accept liability and responsibility of any kind (whether in contract, tort or otherwise) for any expenses, losses, damages and/or costs (including indirect or consequential damage) which are or may be incurred by any party as a result of the map being inaccurate, incomplete or unsuitable in any way and for any reason.
Data source: LPI (2012), LPI Lot Boundaries, 2012. Created by:slidougias



NOTE: Flood Hazard has been calculated in accordance with Figure L2 of the Floodplain Development Manual 2005.

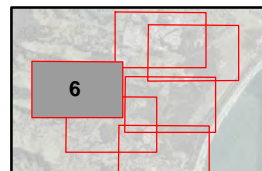


Map Projection: Transverse Mercator
Horizontal Datum: GDA 1994
Grid: GDA 1994 MGA Zone 56



LEGEND

- Low Hazard
- Intermediate Hazard
- High Hazard



Coffs Harbour City Council
Boambee newports Creek
Floodplain Risk Management Study

Job Number | 22-16407
Revision | 0
Date | 14 Jul 2016

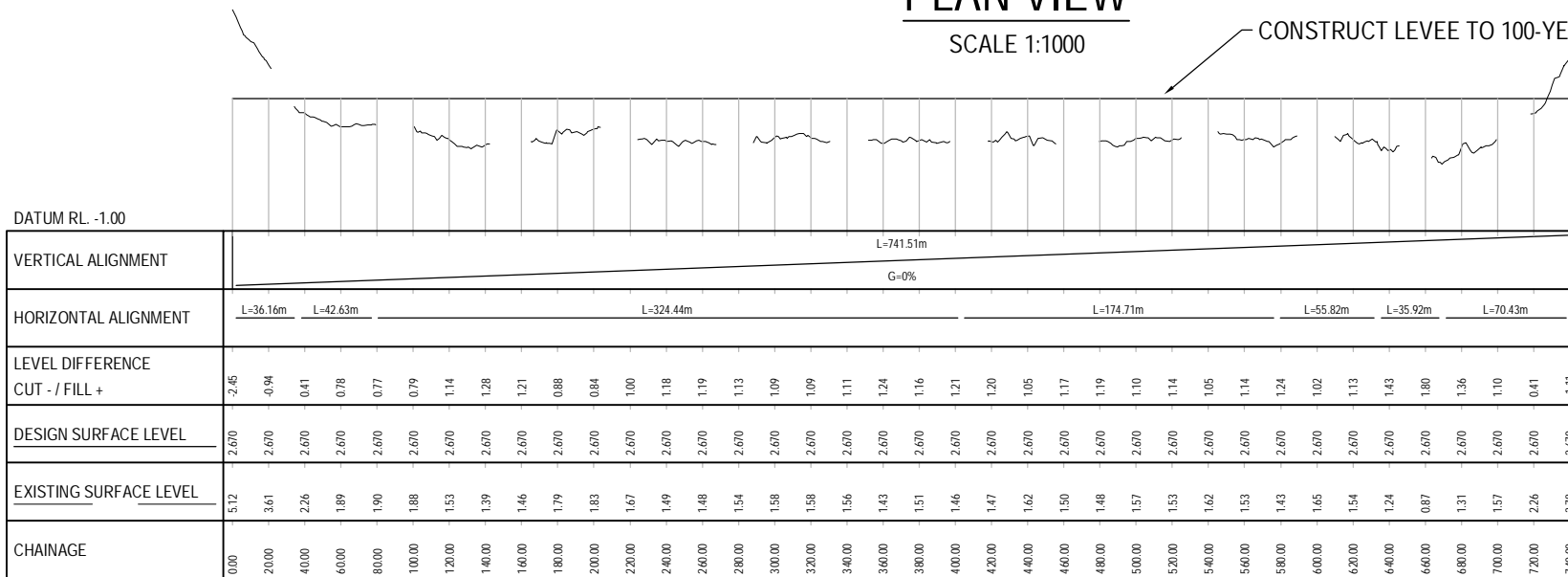
**Provisional Hydraulic Hazard
5% AEP
Appendix B.H.12**

Appendix C Flood Mitigation Options – Concept Sketches



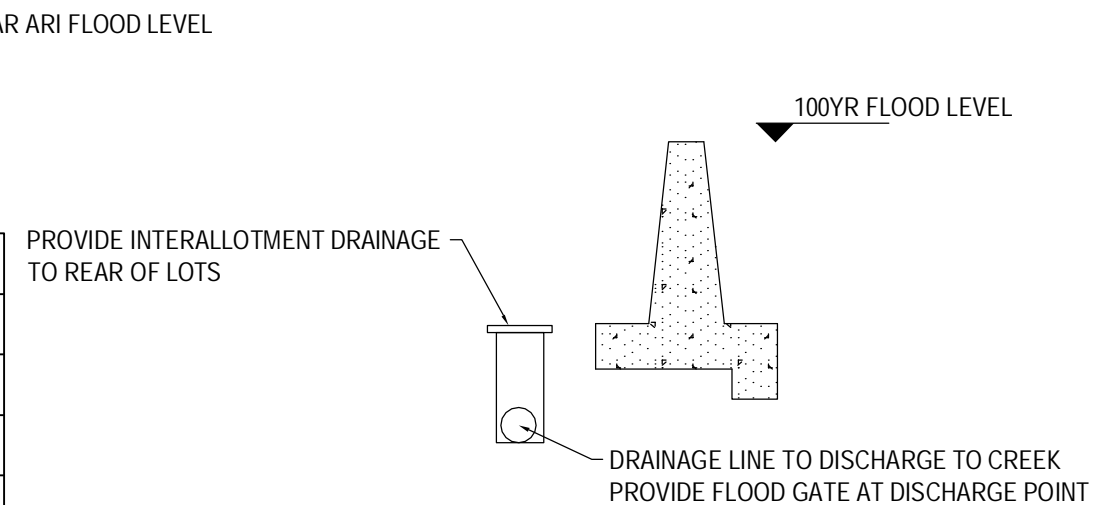
PLAN VIEW

SCALE 1:1000



LONGITUDINAL SECTION - LEVEE BANK

HORZ 1:2000 VERT 1:100



TYPICAL CONCRETE LEVEE DETAIL

SCALE: NOT TO SCALE



COFFS HARBOUR CITY COUNCIL
BOAMBEE NEWPORTS CREEK
FLOODPLAINS RISK MANAGEMENT STUDY AND PLAN
MITIGATION OPTION
BARCOO ROAD LEVEE CONCEPT

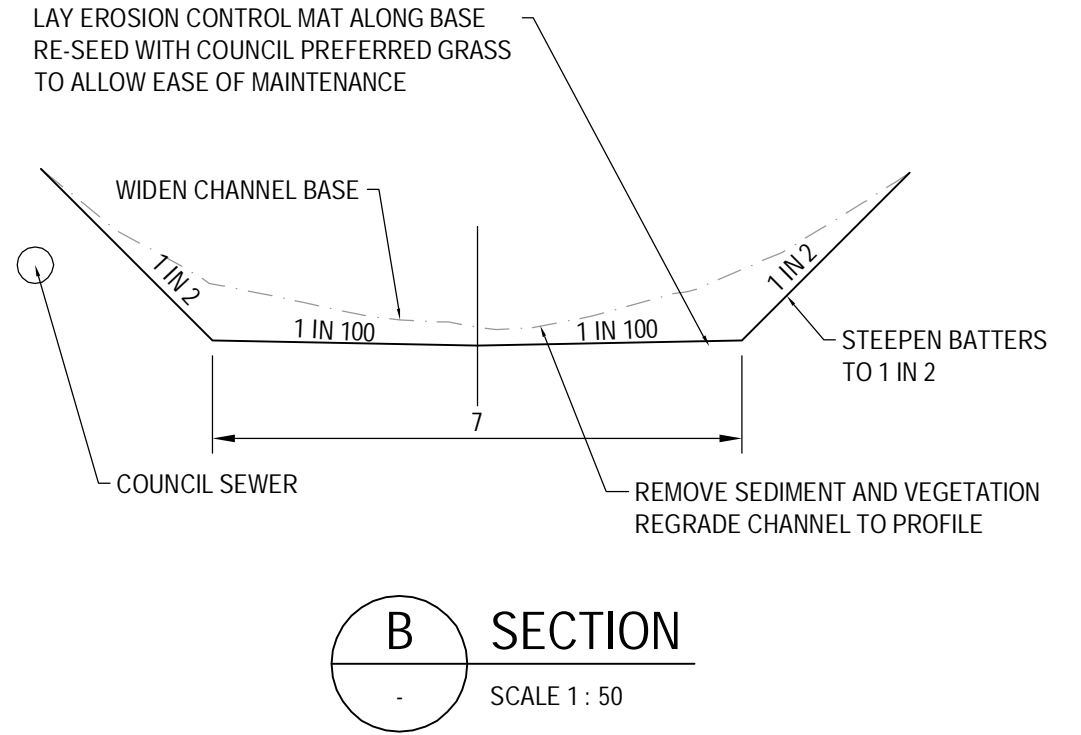
Job Number | 22-16407
Revision | A
Date | DEC 2014

Figure P9



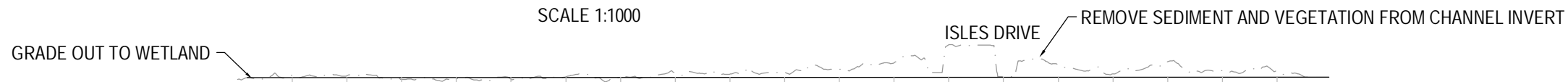
PLAN VIEW

SCALE 1:1000



SECTION

SCALE 1 : 50



DATUM RL. 1.00	
VERTICAL ALIGNMENT	L=395.5m G=0.001%
HORIZONTAL ALIGNMENT	L=184.01m L=63.53m L=143.57m
LEVEL DIFFERENCE CUT - / FILL +	
DESIGN SURFACE LEVEL	3.650 3.650 3.650 3.650 3.651 3.651 3.651 3.651 3.651 3.651 3.651 3.651 3.651 3.652 3.652 3.652 3.652 3.652 3.652 3.652
EXISTING SURFACE LEVEL	3.58 3.72 3.71 3.58 3.59 3.58 3.67 3.67 3.80 3.77 3.83 3.95 4.18 4.84 3.67 4.09 3.78 4.23 3.88 3.90
CHAINAGE	0.00 20.00 40.00 60.00 80.00 100.00 120.00 140.00 160.00 180.00 200.00 220.00 240.00 260.00 280.00 300.00 320.00 340.00 360.00 380.00

LONGITUDINAL SECTION - FLOOD BYPASS CHANNEL

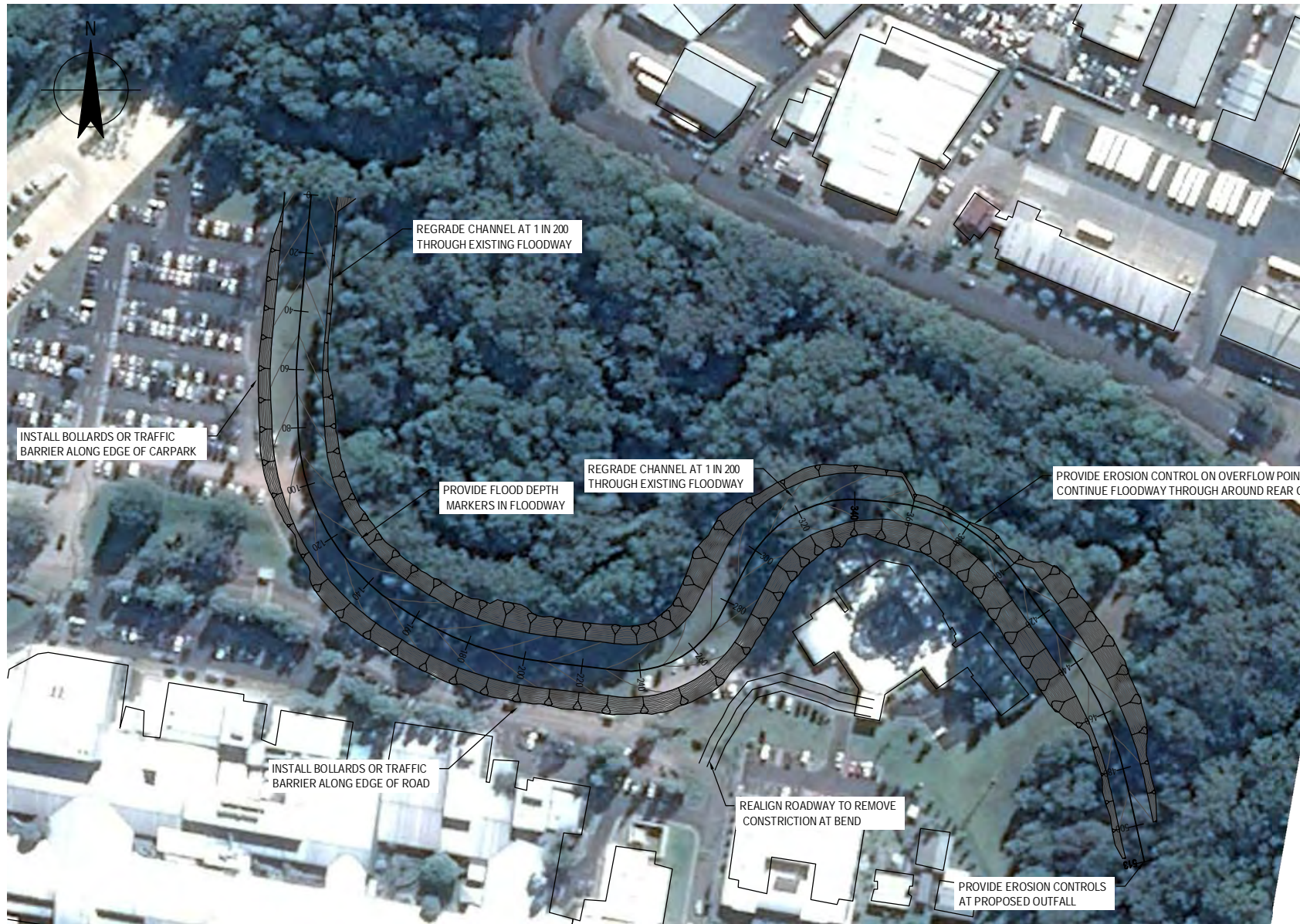
HORZ 1:1000 VERT 1:100



COFFS HARBOUR CITY COUNCIL
 BOAMBEE NEWPORTS CREEK
 FLOODPLAIN RISK MANAGEMENT STUDY AND PLAN
 MITIGATION OPTION
 ISLES DRIVE FLOOD BYPASS

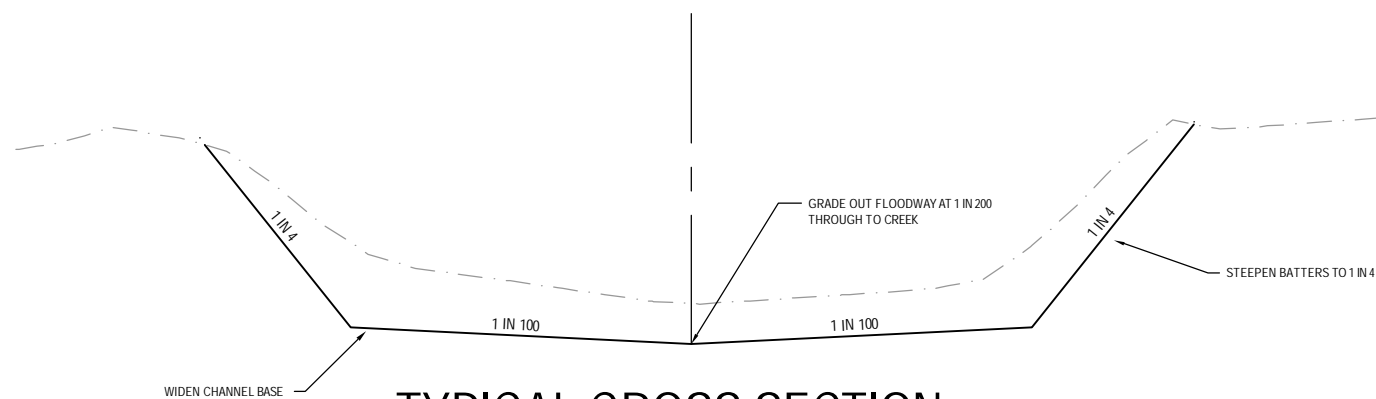
Job Number | 22-16407
 Revision | A
 Date | DEC 2014

Figure P10.3



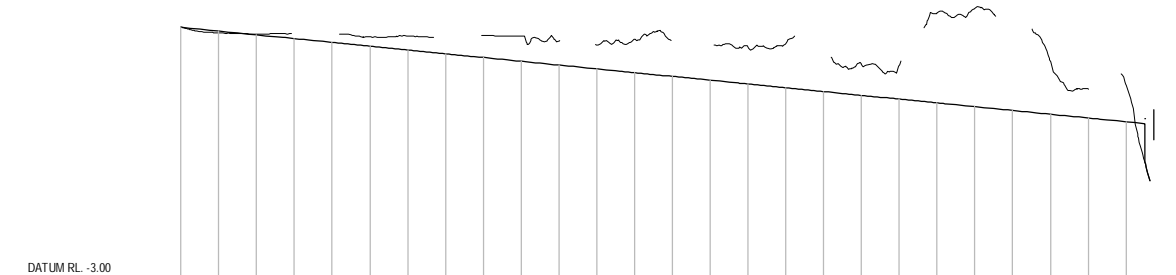
PLAN VIEW

SCALE 1:1000



TYPICAL CROSS SECTION

SCALE 1:100



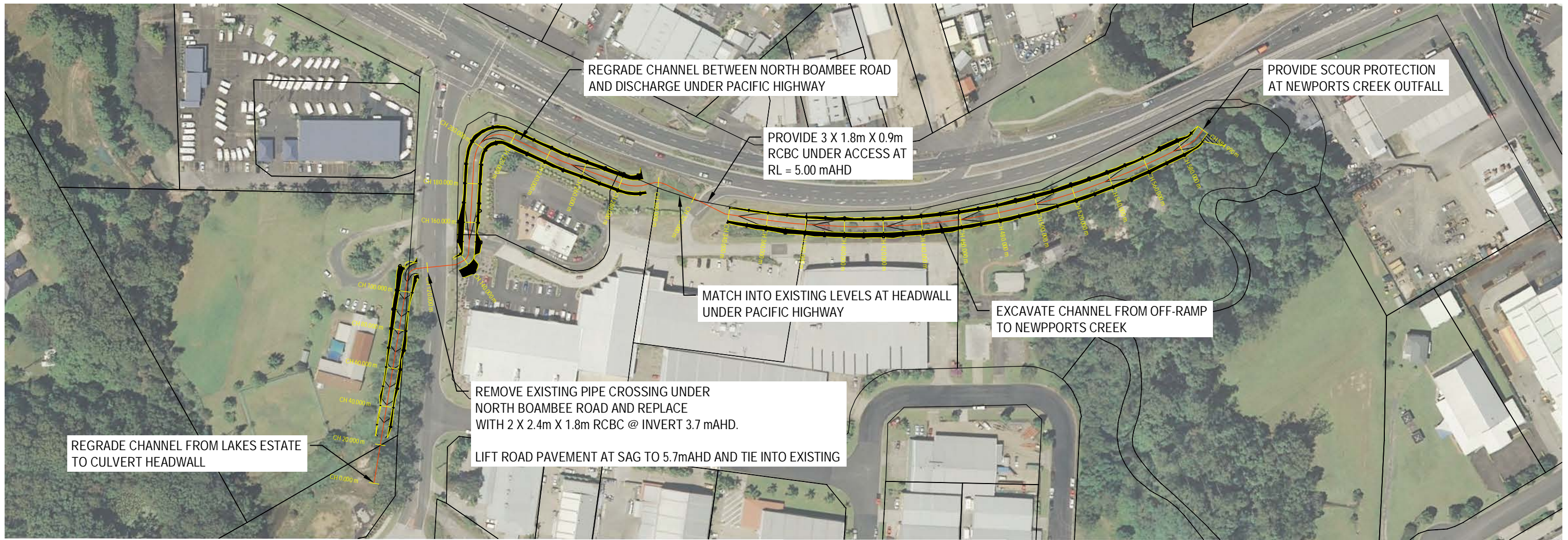
DATUM RL -3.00	
VERTICAL ALIGNMENT	L=516.13m
HORIZONTAL ALIGNMENT	L=54.12m, L=11.12m, L=14.35m, L=71.86m, L=49.77m, L=24.86m, L=42.86m, L=21.21m, L=41.75m, L=2.27m, L=52.85m, L=30.78m, L=51.02m, L=26.45m
LEVEL DIFFERENCE CUT - / FILL +	-0.01, -0.06, -0.02, -0.13, -0.21, -0.24, -0.36, -0.44, -0.58, -0.67, -0.63, -0.62, -0.88, -0.96, -0.89, -0.97, -1.17, -0.96, -0.82, -0.88, -2.37, -2.59, -3.32, -1.45, -1.40, -0.76, -0.98
DESIGN SURFACE LEVEL	3.66, 3.60, 3.54, 3.40, 3.30, 3.20, 3.16, 3.00, 2.90, 2.80, 2.79, 2.69, 2.59, 2.49, 2.39, 2.29, 2.19, 2.09, 1.99, 1.89, 1.79, 1.69, 1.59, 1.45, 1.35, 1.28, 1.18
EXISTING SURFACE LEVEL	3.65, 3.49, 3.46, 3.47, 3.45, 3.45, 3.38, 3.40, 3.38, 3.42, 3.41, 3.27, 3.16, 3.32, 3.30, 3.13, 3.11, 3.21, 2.90, 2.85, 2.62, 4.01, 4.13, 3.76, 2.74, 2.00, 2.12
CHAINAGE	0.00, 20.00, 40.00, 60.00, 80.00, 100.00, 120.00, 140.00, 160.00, 180.00, 200.00, 220.00, 240.00, 260.00, 280.00, 300.00, 320.00, 340.00, 360.00, 380.00, 400.00, 420.00, 440.00, 460.00, 480.00, 500.00

LONGITUDINAL SECTION - FLOODWAY
HORIZONTAL SCALE 1:200
VERTICAL SCALE 1:100



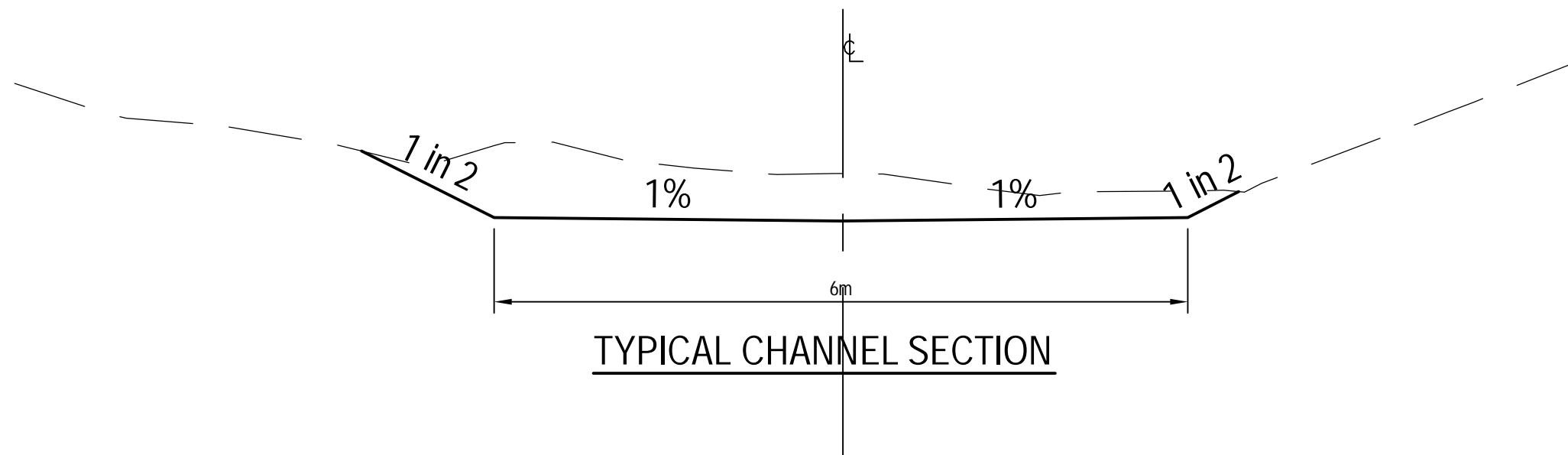
COFFS HARBOUR CITY COUNCIL
BOAMBEE NEWPORTS CREEK
FLOODPLAIN RISK MANAGEMENT STUDY AND PLAN
MITIGATION OPTIONS
FLOODWAY CONCEPT

Job Number | 22-16407
Revision | A3
Date | DEC 2014
Figure PC24.2



PROPOSED CHANNEL ALIGNMENT

SCALE 1:2000



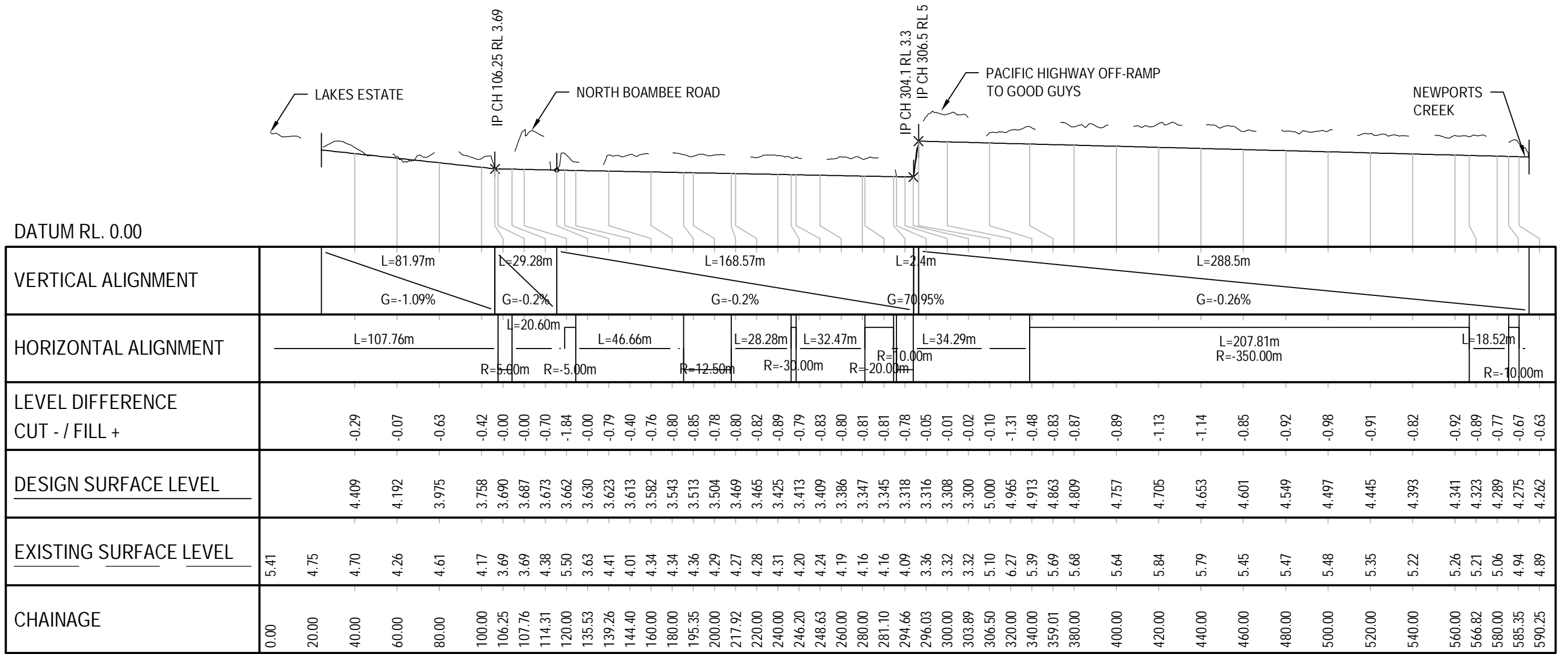
TYPICAL CHANNEL SECTION



COFFS HARBOUR CITY COUNCIL
 BOAMBEE NEWPPORTS CREEK
 FLOODPLAIN RISK MANAGEMENT STUDY AND PLAN
 MITIGATION OPTION
 NORTH BOAMBEE ROAD WORKS PLAN

Job Number | 22-16407
 Revision | A
 Date | MAY 2015

Figure P27.1



LONGITUDINAL SECTION - CL

HORZ 1:2000 VERT 1:200



COFFS HARBOUR CITY COUNCIL
 BOAMBEE NEWPORTS CREEK
 FLOODPLAIN RISK MANAGEMENT STUDY AND PLAN
 MITIGATION OPTION
 NORTH BOAMBEE ROAD LONGSECTION

Job Number | 22-16407
 Revision | A
 Date | MAY 2015

Figure P27.2

GHD

230 Harbour Drive

Coffs Harbour NSW 2450



T: (02) 6650 5600 F: (02) 6650 5601 E: cfsmail@ghd.com

© GHD 2016

This document is and shall remain the property of GHD. The document may only be used for the purpose for which it was commissioned and in accordance with the Terms of Engagement for the commission. Unauthorised use of this document in any form whatsoever is prohibited.

N:\AU\Coffs Harbour\Projects\22\16407\WP\16211.docx

Document Status

Rev No.	Author	Reviewer		Approved for Issue		
		Name	Signature	Name	Signature	Date
0	R.Berg	S.Douglas		R.Berg		19.07.16

www.ghd.com



GHD

230 Harbour Drive

Coffs Harbour NSW 2450


T: (02) 6650 5600 F: (02) 6650 5601 E: cfsmail@ghd.com.au

© GHD 2012

This document is and shall remain the property of GHD. The document may only be used for the purpose for which it was commissioned and in accordance with the Terms of Engagement for the commission. Unauthorised use of this document in any form whatsoever is prohibited.

N:\AU\Coffs Harbour\Projects\22\16407\WP\15288.docx

Document Status

Rev No.	Author	Reviewer		Approved for Issue		
		Name	Signature	Name	Signature	Date
DRAFT1	RB	SD & KB		RB		08/09/14
DRAFT2	RB	SD & KB		RB		02/12/14
DRAFT3	RB	SD & KB		RB		06/05/15
DRAFT4	RB	SD & KB		RB		31/07/15
DRAFT5	RB	SD & KB		RB		24/09/15
Final DRAFT	RB	SD & KB		RB		22/12/15
FINAL	RB	SD & KB		RB		11/07/16

www.ghd.com

