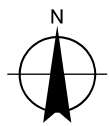
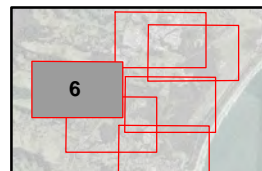


Map Projection: Transverse Mercator
 Horizontal Datum: GDA 1994
 Grid: GDA 1994 MGA Zone 56



LEGEND

- Flood Fringe
- Flood Storage
- Flood Way



Coffs Harbour City Council
 Boambee newports Creek
 Floodplain Risk Management Study

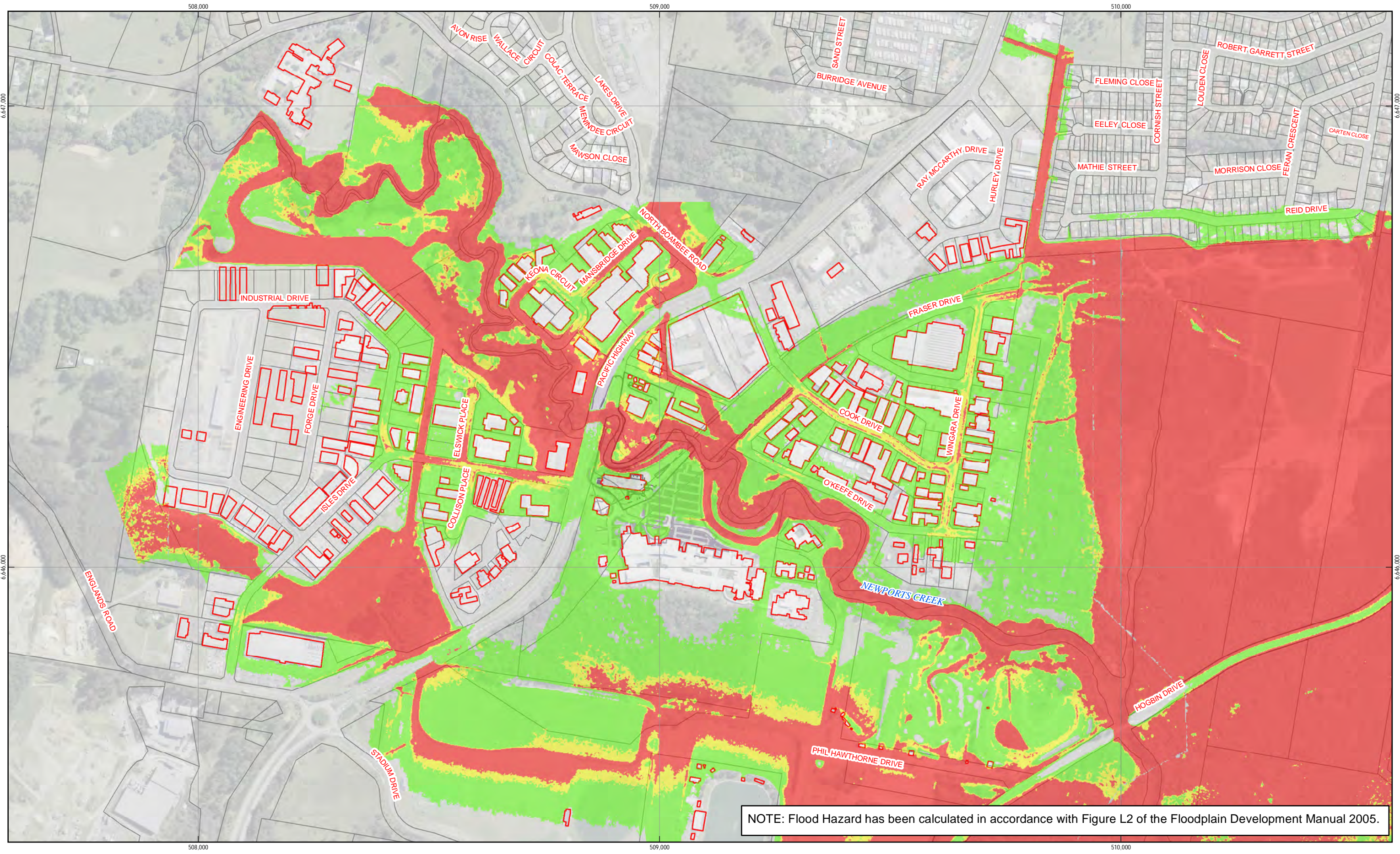
Job Number	22-16407
Revision	0
Date	14 Jul 2016

Hydraulic Categorisation
1% AEP
Appendix B.C.6

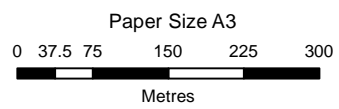
G:\22\16407\GIS\Maps\Deliverables\22_16407_B_C_1_6_100yr_Hydraulic_Category_Rev0.mxd

© 2016. Whilst every care has been taken to prepare this map, GHD (and LPI) make no representations or warranties about its accuracy, reliability, completeness or suitability for any particular purpose and cannot accept liability and responsibility of any kind (whether in contract, tort or otherwise) for any expenses, losses, damages and/or costs (including indirect or consequential damage) which are or may be incurred by any party as a result of the map being inaccurate, incomplete or unsuitable in any way and for any reason.
 Data source: LPI (2012), LPI Lot Boundaries, 2012. Created by:slidougias

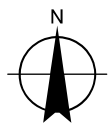
230 Harbour Drive Coffs Harbour NSW 2450 Australia T 61 2 6650 5600 F 61 2 6652 6021 E cfsmail@ghd.com W www.ghd.com



NOTE: Flood Hazard has been calculated in accordance with Figure L2 of the Floodplain Development Manual 2005.

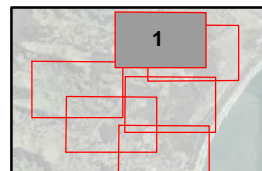


Map Projection: Transverse Mercator
Horizontal Datum: GDA 1994
Grid: GDA 1994 MGA Zone 56



LEGEND

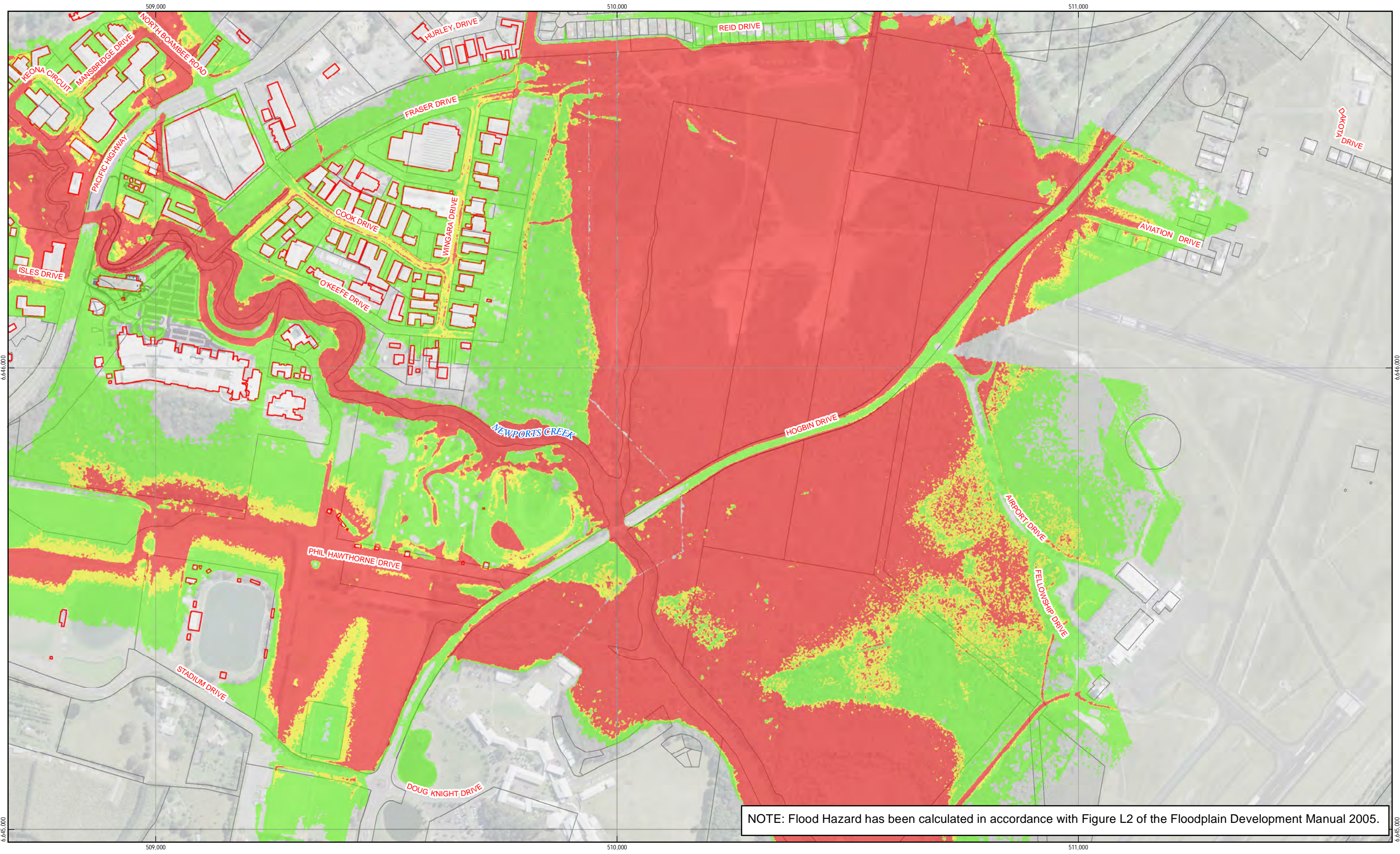
- Low hazard
- Intermediate Hazard
- High hazard



Coffs Harbour City Council
Boambee newports Creek
Floodplain Risk Management Study

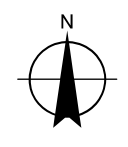
Job Number | 22-16407
Revision | 0
Date | 14 Jul 2016




Provisional Hydraulic Hazard
1% AEP
Appendix B.H.1

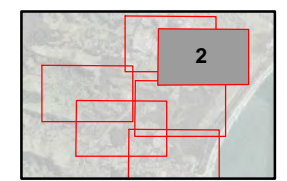


NOTE: Flood Hazard has been calculated in accordance with Figure L2 of the Floodplain Development Manual 2005.

Paper Size A3
 0 37.5 75 150 225 300
 Metres
 Map Projection: Transverse Mercator
 Horizontal Datum: GDA 1994
 Grid: GDA 1994 MGA Zone 56

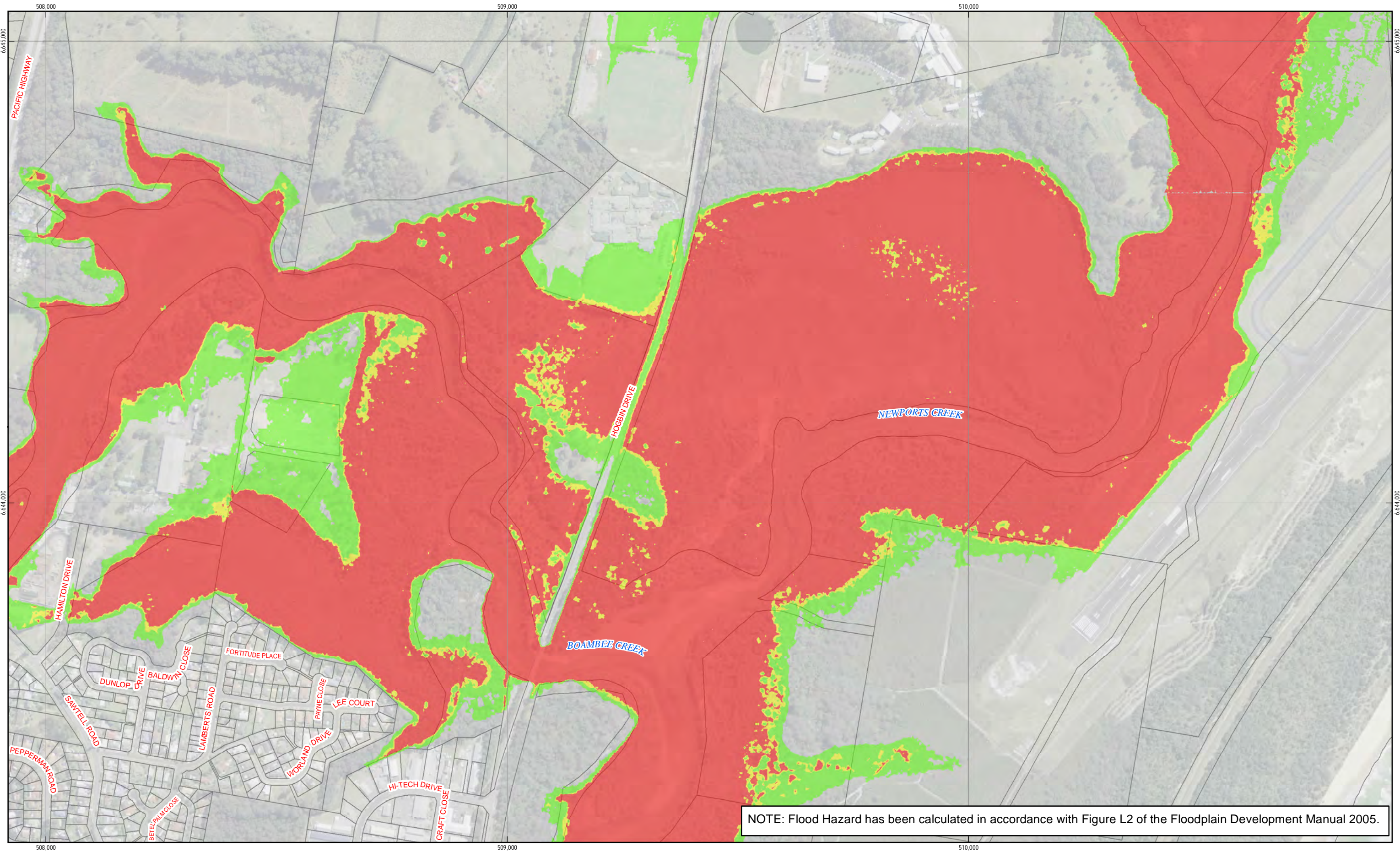


LEGEND
 Low hazard
 Intermediate Hazard
 High hazard

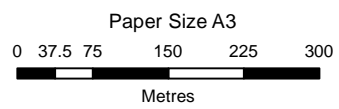


Coffs Harbour City Council	Job Number	22-16407
Boambee newports Creek	Revision	0
Floodplain Risk Management Study	Date	14 Jul 2016

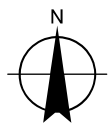
**Provisional Hydraulic Hazard
 1% AEP
 Appendix B.H.2**



NOTE: Flood Hazard has been calculated in accordance with Figure L2 of the Floodplain Development Manual 2005.

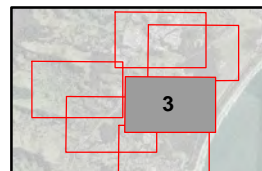


Map Projection: Transverse Mercator
Horizontal Datum: GDA 1994
Grid: GDA 1994 MGA Zone 56



LEGEND

- Low hazard
- Intermediate Hazard
- High hazard



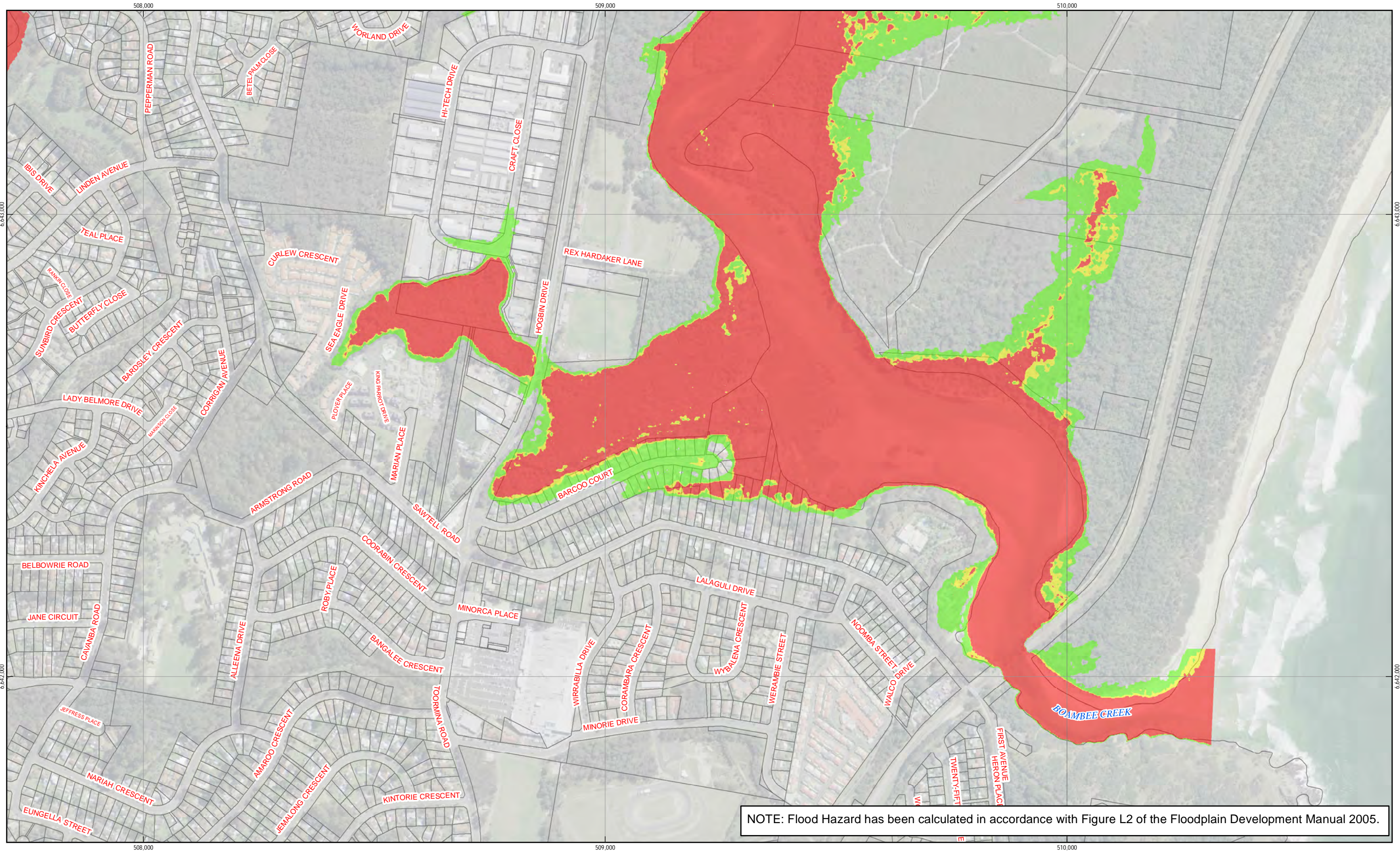
Coffs Harbour City Council
Boambie newports Creek
Floodplain Risk Management Study

Job Number	22-16407
Revision	0
Date	14 Jul 2016

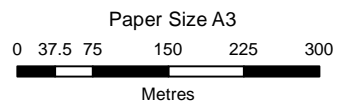
**Provisional Hydraulic Hazard
1% AEP
Appendix B.H.3**

G:\22\16407\GIS\Maps\Deliverables\22_16407_B_H_1_6_100yr_Provisional_Hydraulic_Hazard_Rev0.mxd

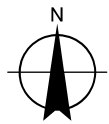
© 2016. Whilst every care has been taken to prepare this map, GHD (and LPI) make no representations or warranties about its accuracy, reliability, completeness or suitability for any particular purpose and cannot accept liability and responsibility of any kind (whether in contract, tort or otherwise) for any expenses, losses, damages and/or costs (including indirect or consequential damage) which are or may be incurred by any party as a result of the map being inaccurate, incomplete or unsuitable in any way and for any reason.
Data source: LPI (2012), LPI Lot Boundaries, 2012. Created by:slidougias



NOTE: Flood Hazard has been calculated in accordance with Figure L2 of the Floodplain Development Manual 2005.

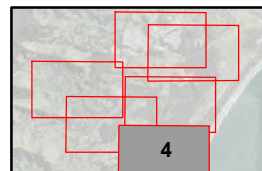


Map Projection: Transverse Mercator
Horizontal Datum: GDA 1994
Grid: GDA 1994 MGA Zone 56



LEGEND

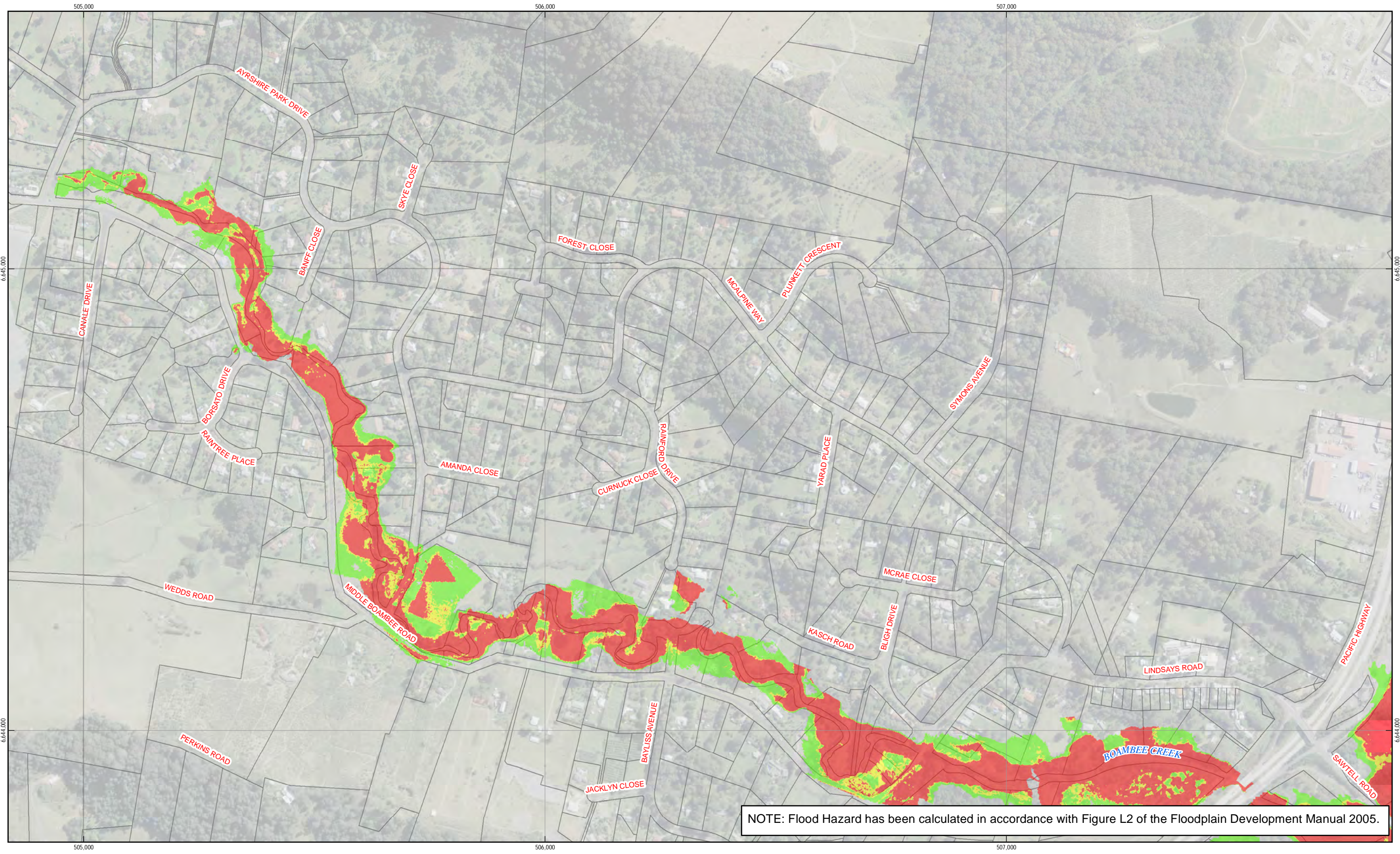
- Low hazard
- Intermediate Hazard
- High hazard



Coffs Harbour City Council
Boambee newports Creek
Floodplain Risk Management Study

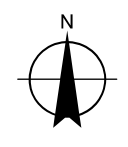
Job Number | 22-16407
Revision | 0
Date | 14 Jul 2016




**Provisional Hydraulic Hazard
1% AEP
Appendix B.H.4**

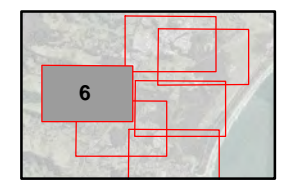


NOTE: Flood Hazard has been calculated in accordance with Figure L2 of the Floodplain Development Manual 2005.

Paper Size A3
 0 37.5 75 150 225 300
 Metres
 Map Projection: Transverse Mercator
 Horizontal Datum: GDA 1994
 Grid: GDA 1994 MGA Zone 56

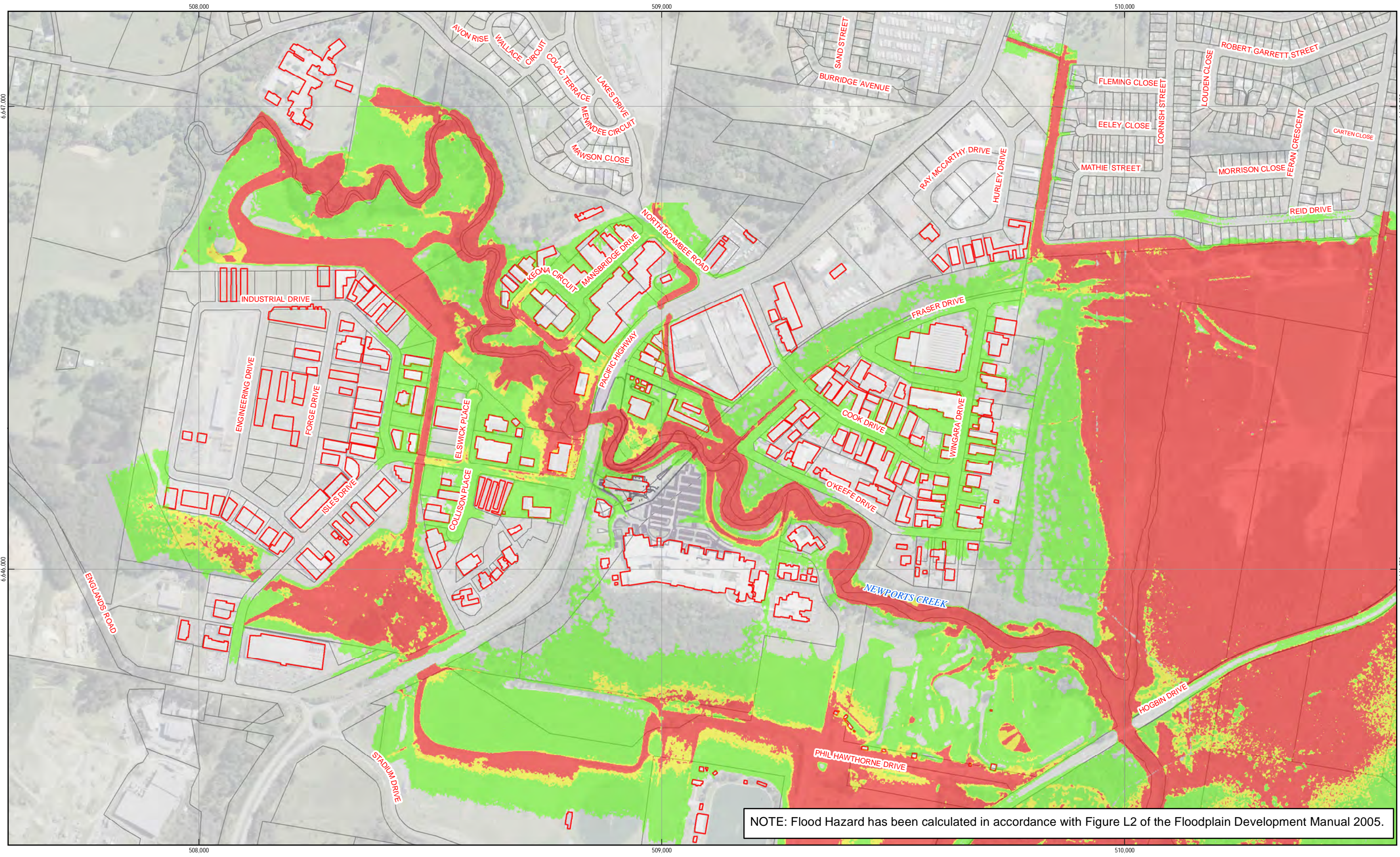


LEGEND
 Low hazard
 Intermediate Hazard
 High hazard

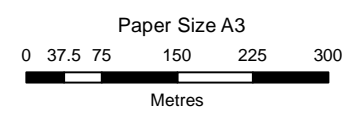


Coffs Harbour City Council	Job Number	22-16407
Boambee newports Creek	Revision	0
Floodplain Risk Management Study	Date	14 Jul 2016

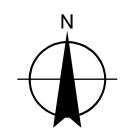
Provisional Hydraulic Hazard 1% AEP Appendix B.H.6



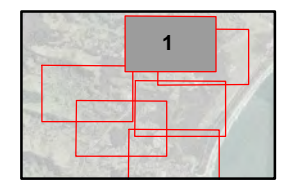
NOTE: Flood Hazard has been calculated in accordance with Figure L2 of the Floodplain Development Manual 2005.



Map Projection: Transverse Mercator
Horizontal Datum: GDA 1994
Grid: GDA 1994 MGA Zone 56

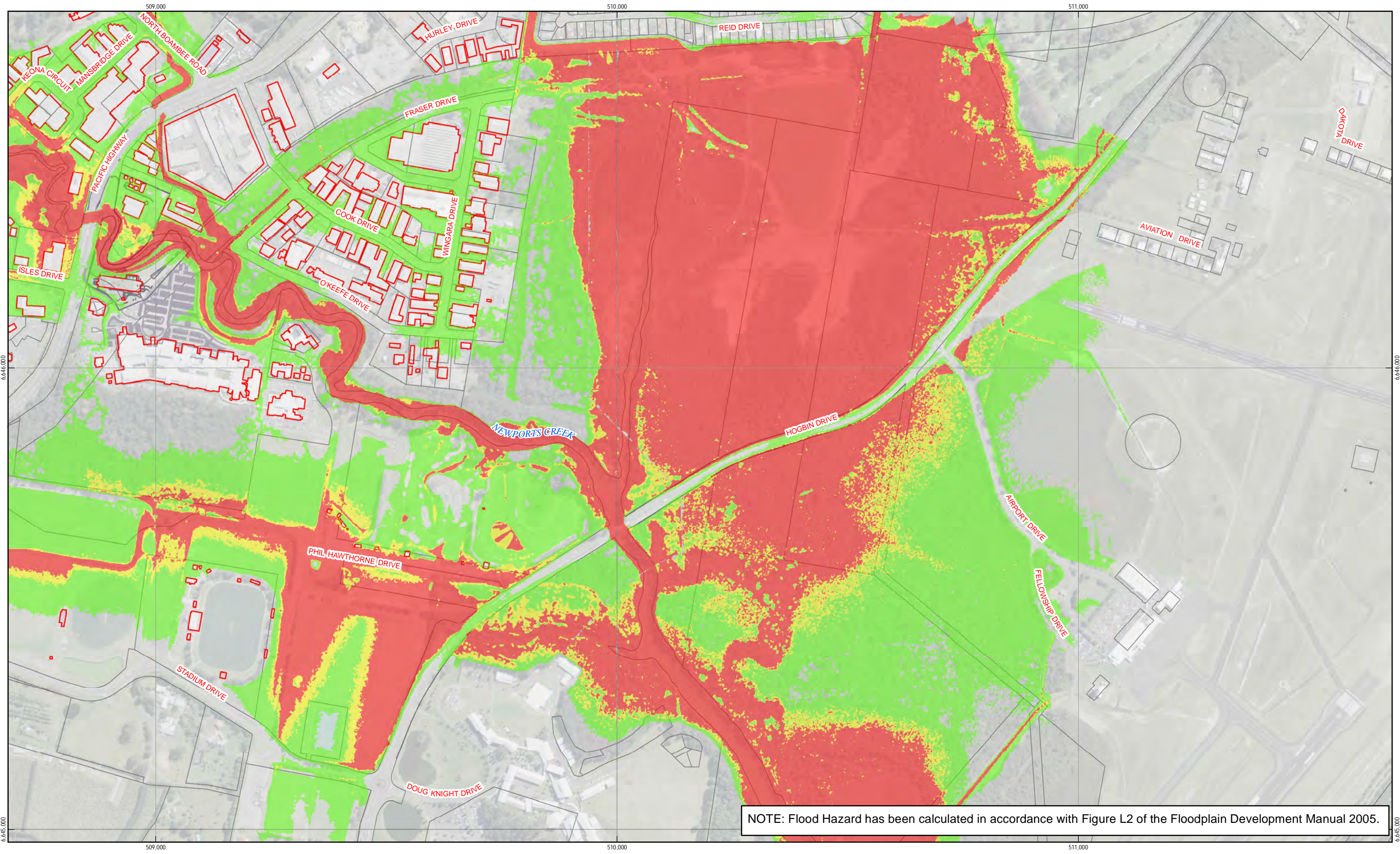


- LEGEND**
- Low Hazard
 - Intermediate Hazard
 - High Hazard



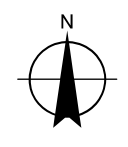
Coffs Harbour City Council	Job Number	22-16407
Boambee newports Creek	Revision	0
Floodplain Risk Management Study	Date	14 Jul 2016

Provisional Hydraulic Hazard 5% AEP Appendix B.H.7

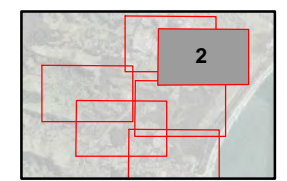


NOTE: Flood Hazard has been calculated in accordance with Figure L2 of the Floodplain Development Manual 2005.

Paper Size A3
 0 37.5 75 150 225 300
 Metres
 Map Projection: Transverse Mercator
 Horizontal Datum: GDA 1994
 Grid: GDA 1994 MGA Zone 56

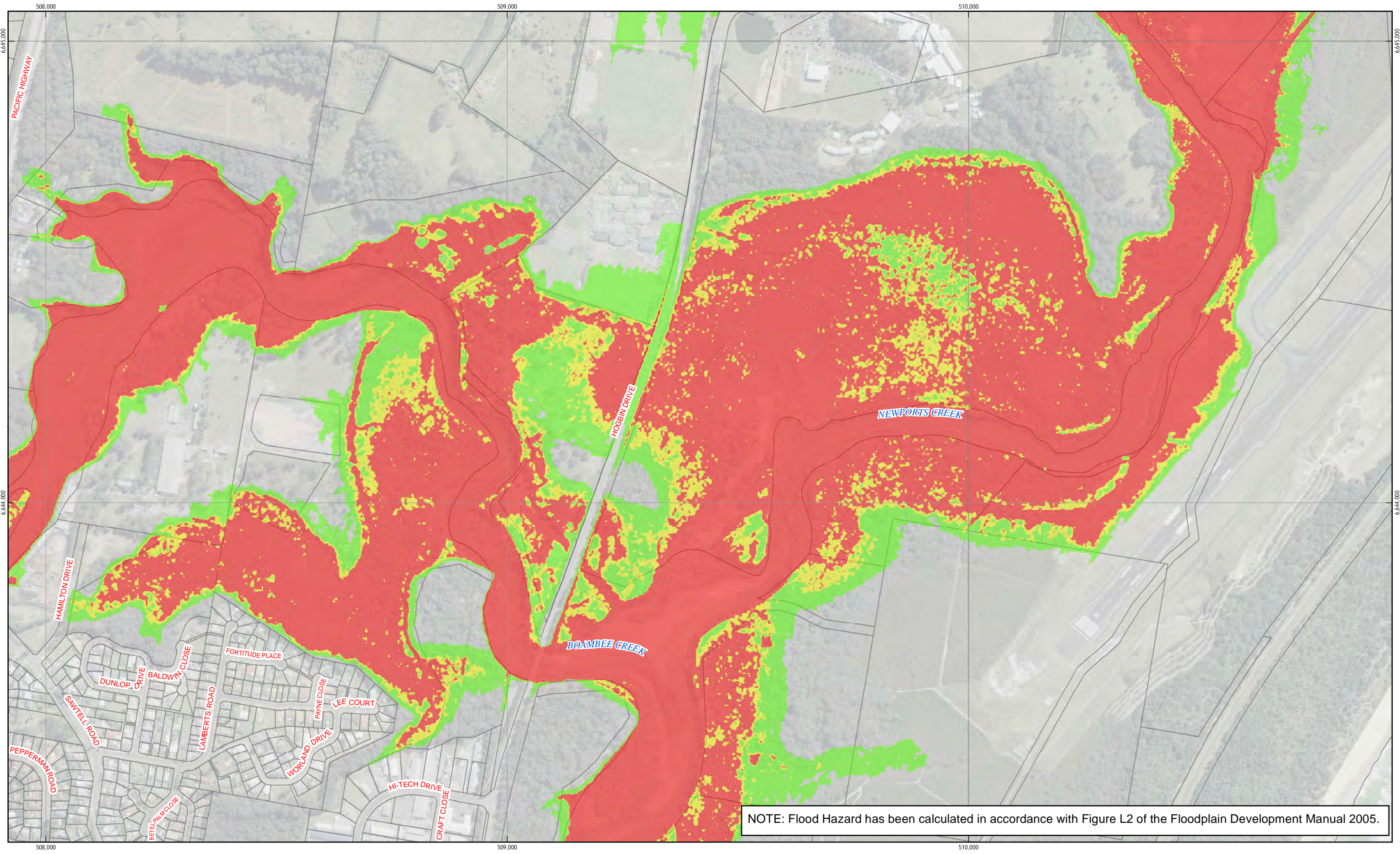


LEGEND
 Low Hazard
 Intermediate Hazard
 High Hazard

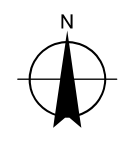


Coffs Harbour City Council
 Boambee newports Creek
 Floodplain Risk Management Study
 Job Number 22-16407
 Revision 0
 Date 14 Jul 2016

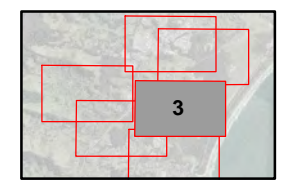
**Provisional Hydraulic Hazard
 5% AEP
 Appendix B.H.8**



Paper Size A3
 0 37.5 75 150 225 300
 Metres
 Map Projection: Transverse Mercator
 Horizontal Datum: GDA 1994
 Grid: GDA 1994 MGA Zone 56

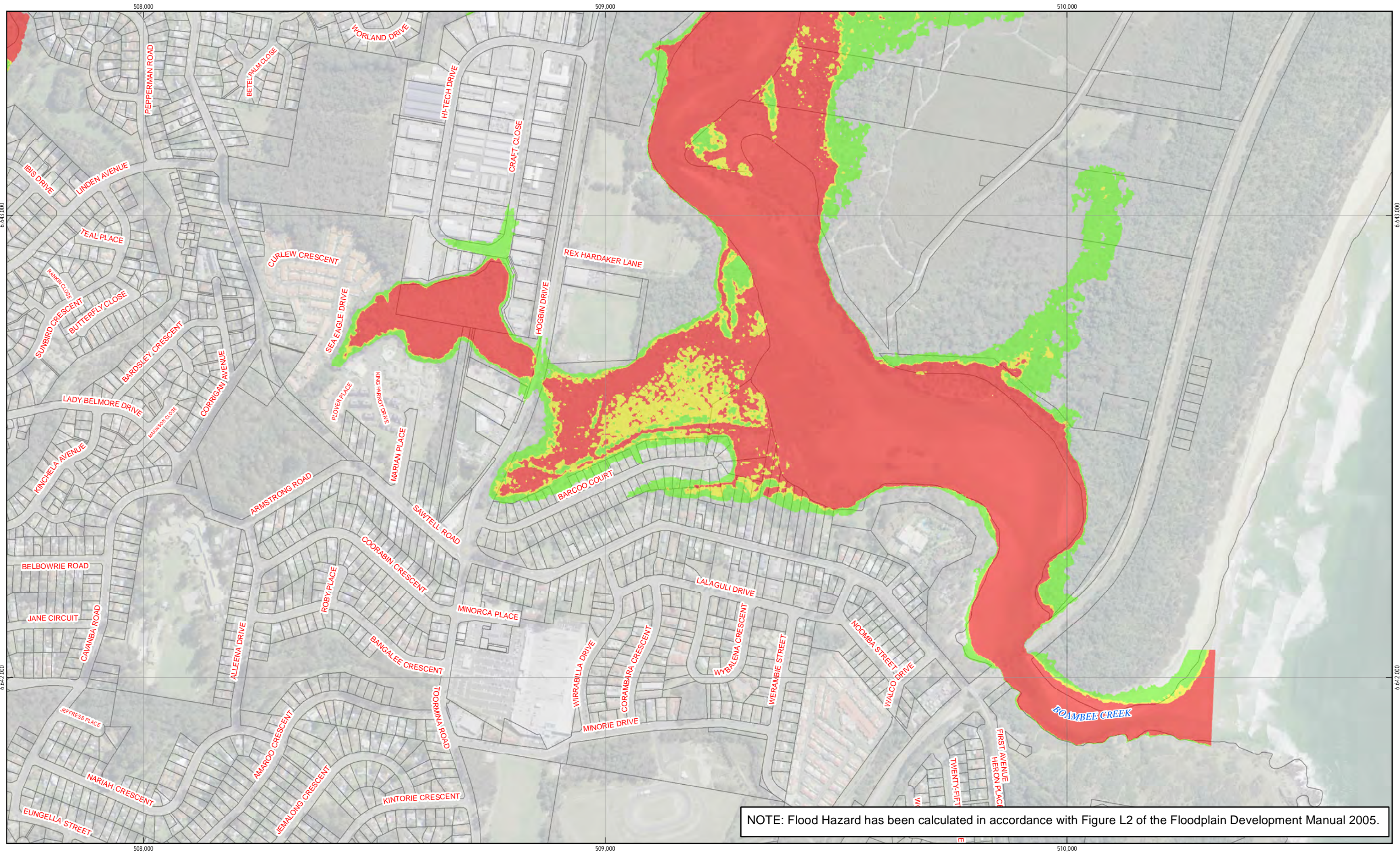


LEGEND
 Low Hazard
 Intermediate Hazard
 High Hazard

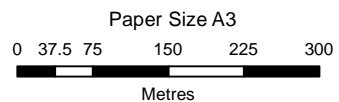


Coffs Harbour City Council
 Boambee newports Creek
 Floodplain Risk Management Study
**Provisional Hydraulic Hazard
 5% AEP
 Appendix B.H.9**

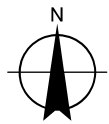
Job Number	22-16407
Revision	0
Date	14 Jul 2016



NOTE: Flood Hazard has been calculated in accordance with Figure L2 of the Floodplain Development Manual 2005.

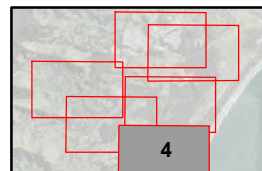


Map Projection: Transverse Mercator
Horizontal Datum: GDA 1994
Grid: GDA 1994 MGA Zone 56



LEGEND

- Low Hazard
- Intermediate Hazard
- High Hazard

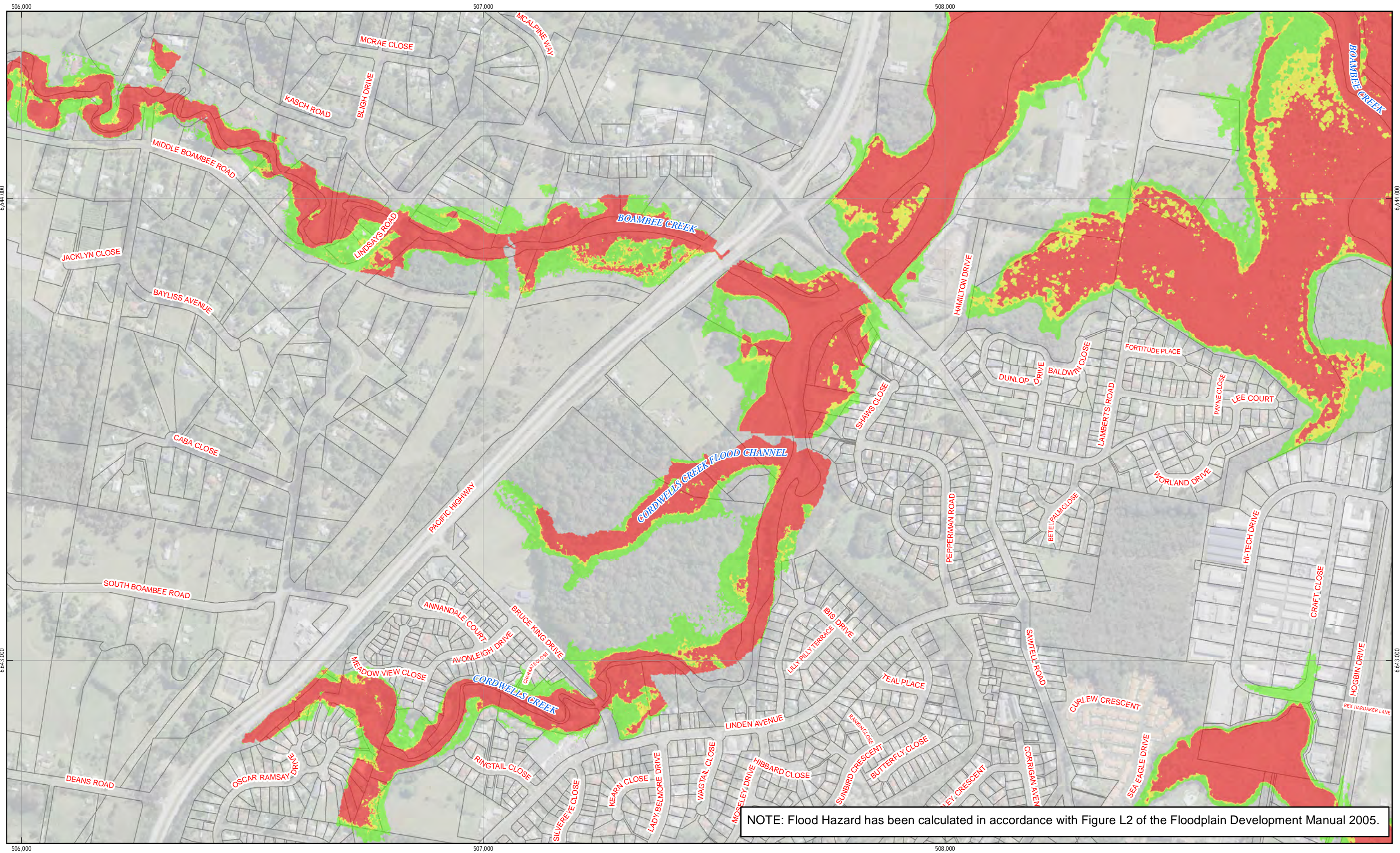


Coffs Harbour City Council
Boambee newports Creek
Floodplain Risk Management Study

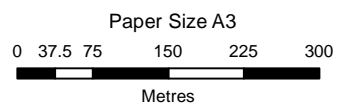
Job Number | 22-16407
Revision | 0
Date | 14 Jul 2016

**Provisional Hydraulic Hazard
5% AEP
Appendix B.H.10**

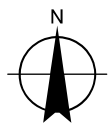
G:\22\16407\GIS\Maps\Deliverables\22_16407_B_H_7_12_020yr_Provisional_Hydraulic_Hazard_Rev0.mxd
© 2016. Whilst every care has been taken to prepare this map, GHD (and LPI) make no representations or warranties about its accuracy, reliability, completeness or suitability for any particular purpose and cannot accept liability and responsibility of any kind (whether in contract, tort or otherwise) for any expenses, losses, damages and/or costs (including indirect or consequential damage) which are or may be incurred by any party as a result of the map being inaccurate, incomplete or unsuitable in any way and for any reason.
Data source: LPI (2012), LPI Lot Boundaries, 2012. Created by:sliduglas



NOTE: Flood Hazard has been calculated in accordance with Figure L2 of the Floodplain Development Manual 2005.

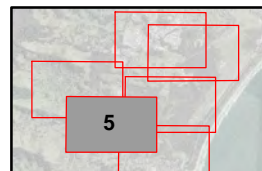


Paper Size A3
 Map Projection: Transverse Mercator
 Horizontal Datum: GDA 1994
 Grid: GDA 1994 MGA Zone 56



LEGEND

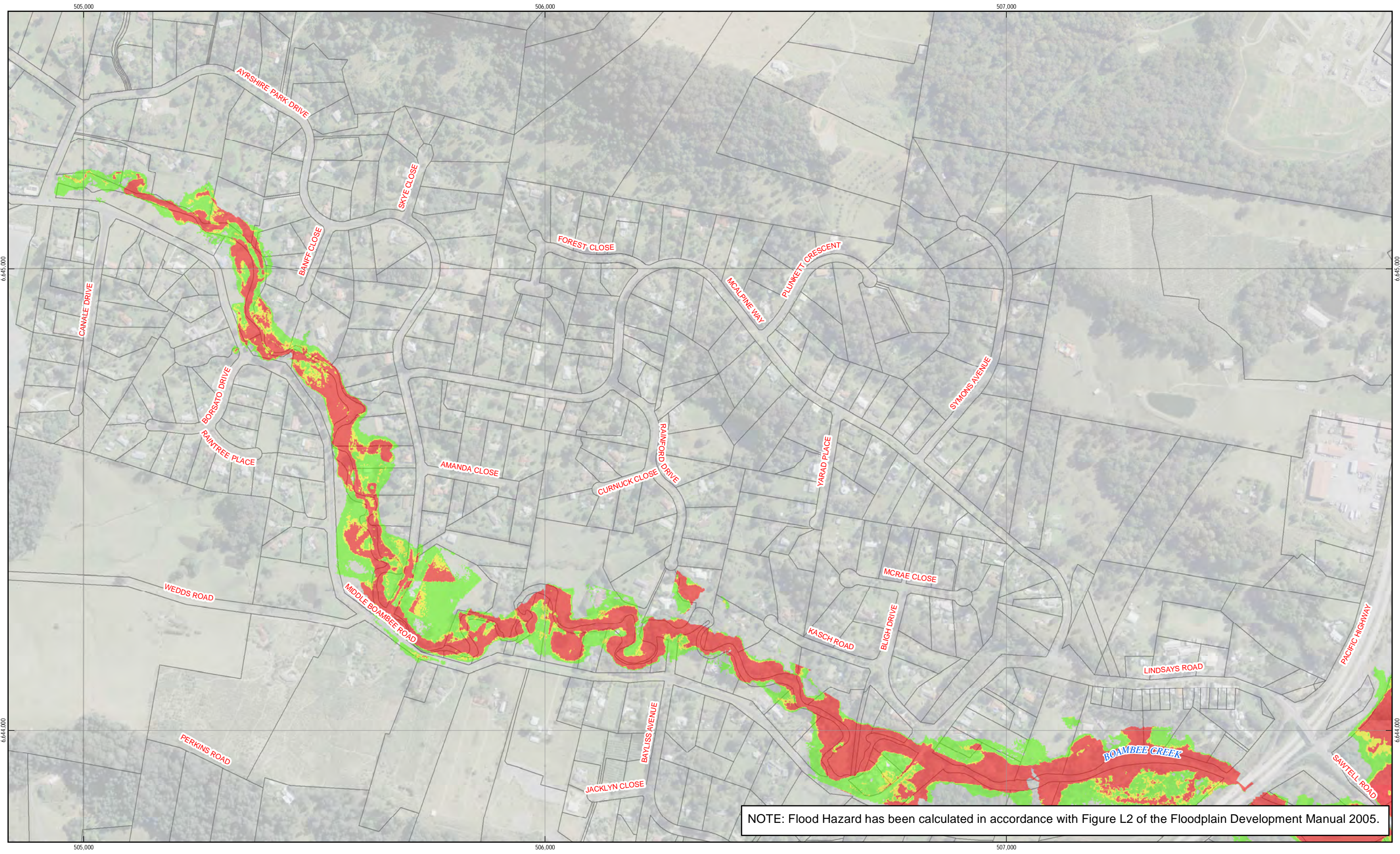
- Low Hazard
- Intermediate Hazard
- High Hazard



Coffs Harbour City Council
 Boambee newports Creek
 Floodplain Risk Management Study

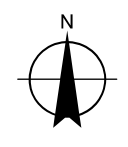
Job Number | 22-16407
 Revision | 0
 Date | 14 Jul 2016




**Provisional Hydraulic Hazard
 5% AEP
 Appendix B.H.11**

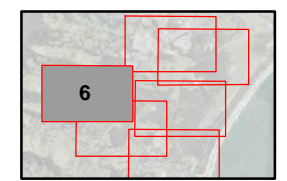


NOTE: Flood Hazard has been calculated in accordance with Figure L2 of the Floodplain Development Manual 2005.

Paper Size A3
 0 37.5 75 150 225 300
 Metres
 Map Projection: Transverse Mercator
 Horizontal Datum: GDA 1994
 Grid: GDA 1994 MGA Zone 56



LEGEND
 Low Hazard
 Intermediate Hazard
 High Hazard



Coffs Harbour City Council
 Boambee newports Creek
 Floodplain Risk Management Study
 Job Number | 22-16407
 Revision | 0
 Date | 14 Jul 2016
**Provisional Hydraulic Hazard
 5% AEP
 Appendix B.H.12**

