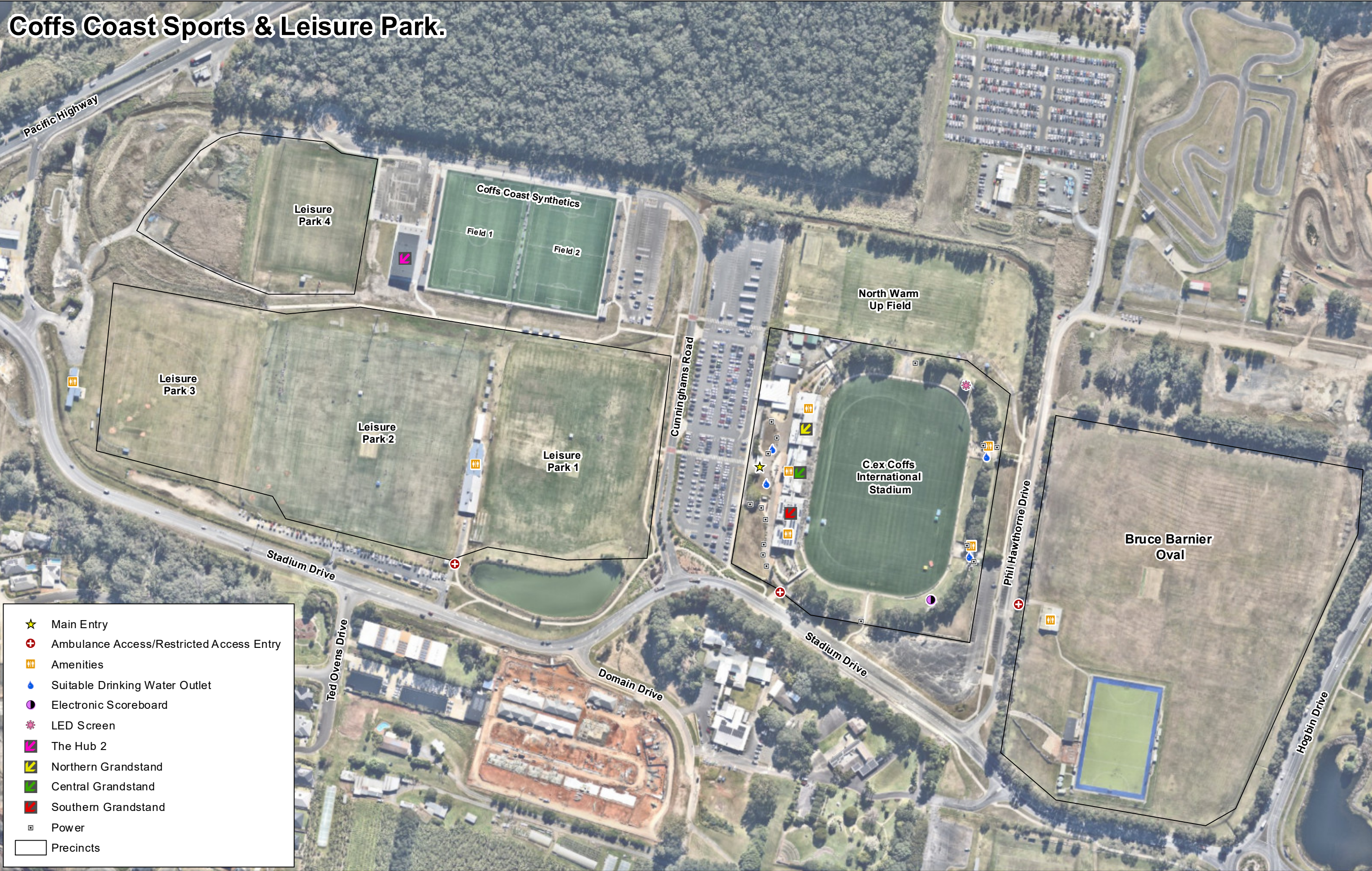


# Coffs Coast Sports & Leisure Park.



Cadastral, topographic and aerial ADS40 information supplied by the NSW Department of Finance and Services and maintained by Coffs Harbour City Council (Copyright © 2021, NSW Department of Finance and Services). Other data displayed may have been supplied by various other agencies under licence.

This map must not be reproduced in any form, whole or part, without written permission from Coffs Harbour City Council. This Council does not warrant the correctness of this map or information contained thereon. This map Copyright © 2021, Coffs Harbour City Council.

Council accepts no liability or responsibility in respect to the map and any inaccuracies thereon. Any person relying on this plan shall do so at their own risk.

## Coffs Coast Sport & Leisure Park

This map produced by GIS Section  
Coffs Harbour City Council  
Date: 5/09/2022

SCALE @A3 1:3000

0 25 50 100 150

Metres

Coordinate System: GDA 1994 MGA Zone 56  
Projection: Transverse Mercator  
Datum: GDA 1994

GRID NTH

