



# Woolgoolga Beach Reserve

---

CONCEPT DESIGN REPORT

# Contents

## Strategic Context

The Beach Reserve ..... 01

## Concept Design

Beach Reserve Masterplan ..... 03

Masterplan Detail Plans ..... 05

Integrated Play Concept ..... 13

Amenities Design Concept ..... 17

Materials Palette ..... 19

Planting Strategy ..... 21

Planting Palettes ..... 23

## Appendix A

### Strategic Context

Planning Process to Date .....

Key Informing Strategies and Initiatives .....

### Site Analysis

Views and Visual Setting .....

Micro Climate .....

Natural Hazards and Flooding .....

Existing park Infrastructure .....

Movement Networks .....

### What We've Heard

### Amenities Analysis

### The Endorsed Foreshore Park Concept Plan

### The Endorsed Plan of Management

## Appendix B

Woolgoolga Beach Reserve Community Consultation Summary

## Appendix C

NSW NPWS Buster & Pier Timbers

# Strategic Context

## The Beach Reserve

Woolgoolga Beach Reserve is highly valued by the local community and visitors, as it offers a wide range of recreational opportunities, from protected swimming to surfing, walking and boating.

The community greatly enjoys the existing low key development and nearby restaurants, cafes and markets offered at these beaches.

## Role and Character

The Woolgoolga Foreshore and Beach Reserve consists of a variety of key spaces and places with a variety of roles and functions. The reserve responds to the existing coastal setting and engages the town centre.

A number of different design responses are possible depending on the future outcomes and timing of the caravan park, SLSC and Marine Rescue.

The Reserve is Woolgoolga's premier public open space and a key tourism asset. It's renewal will assist Woolgoolga in capturing new business and service opportunities supported by growing numbers of residents and visitors.

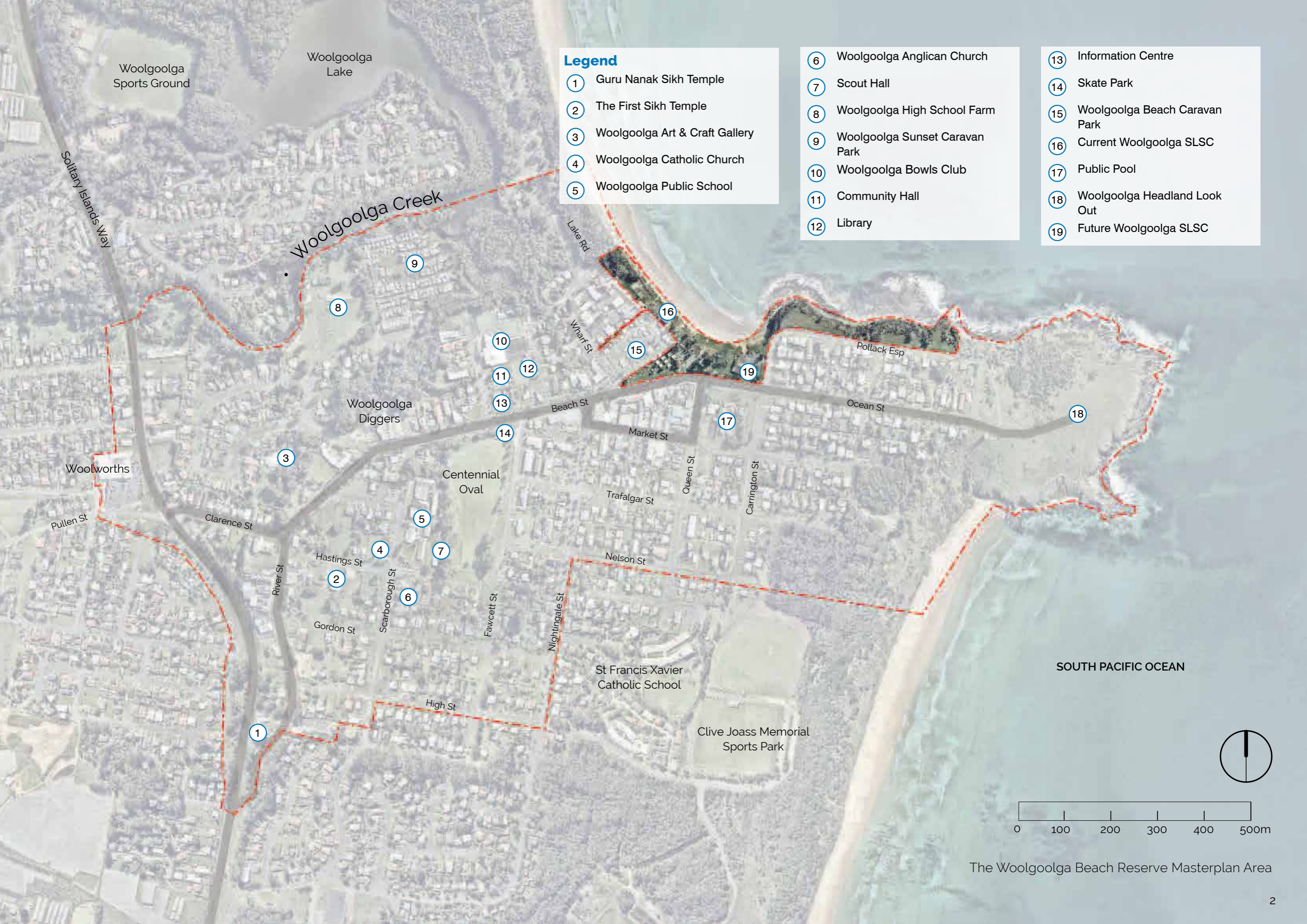
## Historic Influences

The original survey of Woolgoolga was completed in 1886 and followed the colonial grid system. There has been little deviation in grid development pattern from the original survey plan in the majority of the Town Centre.

A number of influences have shaped the structure and character of the Town Centre over its history, including:

- The natural setting including the beach, sloping topography, Woolgoolga Creek and flood prone land;
- Historic land ownership patterns and port activities;
- The former role of Solitary Islands Way as the highway;
- The disparate commercial precincts as a result of changing industry bases and highway alignments; and
- The low scale and density of urban development due to the availability of property and the absence of sustained development pressures.



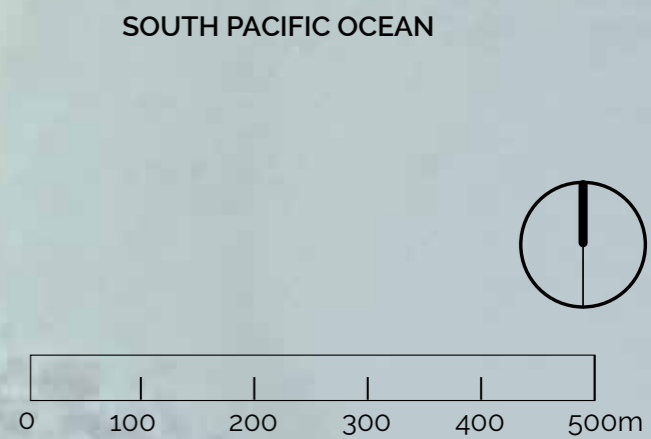


**Legend**

- ① Guru Nanak Sikh Temple
- ② The First Sikh Temple
- ③ Woolgoolga Art & Craft Gallery
- ④ Woolgoolga Catholic Church
- ⑤ Woolgoolga Public School

- ⑥ Woolgoolga Anglican Church
- ⑦ Scout Hall
- ⑧ Woolgoolga High School Farm
- ⑨ Woolgoolga Sunset Caravan Park
- ⑩ Woolgoolga Bowls Club
- ⑪ Community Hall
- ⑫ Library

- ⑬ Information Centre
- ⑭ Skate Park
- ⑮ Woolgoolga Beach Caravan Park
- ⑯ Current Woolgoolga SLSC
- ⑰ Public Pool
- ⑱ Woolgoolga Headland Look Out
- ⑲ Future Woolgoolga SLSC



The Woolgoolga Beach Reserve Masterplan Area

# Concept Design

Dune stabilisation fence to be set back/down to enhance open views to the beach from the reserve

Secondary beach access point

Primary beach access point, including Surf Life Savers access

Boat ramp access only

Views to the headland are opened up from Beach Street by de-cluttering the central parkland.

Beach Street road section subject to the development of a People Movement and Transport System Strategy

# Beach Reserve Masterplan



**legend**

- 01** Existing parking area is formalised with inclusion for disabled parking and shade trees planted on property boundaries to maintain residents views.
- 02** Shade trees are situated on property boundaries in order to maintain clear views for residents.
- 03** Existing dune vegetation is retained and enhanced with appropriate native species.
- 04** Large shade trees and open lawns provide a flexible space to inhabit.
- 05** Informal beach access for surfers, private water craft and swimmers. Illegal beach access points are to be closed and re-vegetated.
- 06** The pedestrian link between Wharf street is enhanced to provide a more legible connection to the beach.
- 07** Main access relocated to minimise conflicts with boat ramp users and direct beach goes away from the permanent rip at the southern end of the beach. New deck with shade shelter with the potential to reuse material from the SLSC. An external shower and an accessible ramp connection to beach is provided, with provision for beach mat anchor points for wheelchair access.
- 08** Re-vegetation and stabilisation of the dune with native species, including groves of Pandanas and Casuraina trees. Dune protection fence to be set back and recessed to enhance views from the reserve.
- 09** Informal lawns for quiet recreation and low planting with shade trees to maintain ocean views.
- 10** Relocated playground.
- 11** Large open turf lawn to facilitate temporary events, activation and play. Potential location for community markets and stalls.
- 12** Pockets of lawn provide picnicking opportunities adjacent the re-vegetated dunes.
- 13** A flexible space for outdoor events, temporary activation and community celebrations. Tensile shade structure incorporating suspended decorative artwork elements.
- 14** Vegetated buffer along caravan park edge.
- 15** Informal picnic lawn for use as breakout space during events.
- 16** New wayfinding, signage and artwork opportunities at parkland gateways and key nodes, with the potential to incorporate a heritage overlay.
- 17** New amenities building with a PWD WC, changing places facility, shared wash hand basins and external showers.
- 18** Deck under existing trees, surrounded by native planting.
- 19** Small informal events lawn.
- 20** Existing boat ramp is retained.
- 21** New SLSC car park with boat trailer parking and overflow area adjacent the new Surf Life Saving Club.
- 22** Surf Life Saving Club.
- 23** Relocated fish cleaning station.
- 24** Re-vegetated areas reducing the extent of grass areas to be maintained.
- 25** A new accessible deck with shade structure and viewing terraces.
- 26** Whale Trail: accessible boardwalk provides a connection between the reserve and the existing headland path. Impacts on remnant fragile vegetation to be minimised through detailed design and construction.
- 27** Existing open lawns are retained.
- 28** A new lookout deck with seating. Existing shelter to be upgraded.
- 29** Existing lookout retained.
- 30** Retain and protect existing Norfolk Island Pines.
- 31** Reconfigured Woolgoolga Beach Caravan Park, as per approved Woolgoolga Beach Reserve Plan of Management.



adjoins adjacent

# Concept Design

## Detail Plans

### Key design responses

Enhancing the existing natural amenity and beauty of the beach reserve through the integration of considered and complementary landscape strategies, including the:

- Provision of open flexible lawns and protection of existing large shade trees surrounded by pockets of native vegetation provide spaces to inhabit.
- Provision of a central plaza/events space, a new front door to the reserve.
- Enhancement of the pedestrian link to Wharf street with a more legible connection to the beach.
- Integration of a network of new and shaded nature playspaces.
- Provision of new boardwalks, shade structures, bbq areas and a new bespoke amenities block.
- Formalisation of Hofmeier close carparking to provide greater access to the northern end of the reserve.



### What items require future detail design?

This Masterplan is a high level document that provides a vision for the future of Woolgoolga Beach Reserve.

Key items that require further detailed design include::

- Shade structures, picnic shelters and park furniture
- Proposed outlooks and boardwalks along the foreshore
- The tensile shade structure with incorporated artwork
- The play area and associated infrastructure
- The amenities building
- Wayfinding and interpretive signage elements
- Integrated artwork elements
- Exercise stations
- An accessible beach connection

### Legend

- 01 Existing parking area is formalised with inclusion for disabled parking.
  - 02 Shade trees are situated on property boundaries in order to maintain clear views for residents.
  - 03 Existing dune vegetation is retained and enhanced with appropriate native species.
  - 04 Large shade trees and open lawns provide a flexible space to inhabit.
  - 05 Informal beach access for surfers, private water craft and swimmers.
  - 06 The laneway link between Wharf street is enhanced to provide a more legible connection to the beach.
  - 07 New destination point with multipurpose deck structure, with shade shelter, seating and opportunities for casual surveillance over the beach. Potential to reuse material from the SLSC.
  - 08 Main access is relocated to minimise conflicts with boat ramp users and direct beach goes away from the permanent rip at the southern end of the beach. An accessible ramp connection to beach is provided, with provision for beach mat anchor points for wheelchair access.
  - 09 Informal lawns for quiet recreation and low planting with shade trees maintains ocean views from Caravan Park cabins.
  - 10 New wayfinding, signage and artwork opportunities at parkland gateways and key nodes, with the potential to incorporate a heritage overlay.
  - 11 Deck under existing trees, surrounded by native planting.
  - 12 Re-vegetation and stabilisation of the dune with native species, including groves of Pandanas trees.
  - 13 Reconfigured Woolgoolga Beach Caravan Park, as per approved Woolgoolga Beach Reserve Plan of Management.
  - 14 External beach shower.
-  Exercise station - to include a variety of equipment for various user groups, for example accessible stations, playful elements and static elements .
-  Accessible parking provision.

1:250 0 5 10 15 20 25m



Dune stabilisation fence to be set back/down to enhance open views to the beach from the reserve

Proposed new trees to provide shade on the beach edge

Re-vegetated edge to the beach

Proposed location for artwork referencing the history of jetty and 'Buster'. Opportunity to utilise timber provided by NSW NPWS.

Accessible beach connection

Proposed new shelter to provide destination location and protection from sun & wind

Hofmeier Close upgrade with formalised parking and new shared path connections

Flexible open lawns



03

04

01

02



05

12

10

11

14

09

08

07

12

13

06

6

legend

- 01 Main access is relocated to minimise conflicts with boat ramp users and direct beach goes away from the permanent rip at the southern end of the beach. An accessible ramp connection to beach is provided, with provision for beach mat anchor points for wheelchair access.
- 02 Informal lawns for quiet recreation and low planting with shade trees maintains ocean views from Caravan Park cabins.
- 03 Adventure playground and discovery trail - refer detail plan.
- 04 Large open turf lawn to facilitate temporary events, activation and play. Potential location for community markets and stalls.
- 05 A flexible space for outdoor events, temporary activation and community celebrations. Tensile shade structure incorporating floating artwork elements.
- 06 Vegetated buffer along caravan park edge.
- 07 Informal picnic lawn for use as breakout space during events.
- 08 New wayfinding, signage and artwork opportunities at parkland gateways and key nodes, with the potential to incorporate a heritage overlay.
- 09 New amenities building.
- 10 Potential market set-up, utilising the verge for stalls and creating a promenade.
- 11 Reconfigured Woolgoolga Beach Caravan Park, as per approved Woolgoolga Beach Reserve Plan of Management.
- 12 Re-vegetation and stabilisation of the dune with native species, including groves of Pandanas trees.
- 13 A new accessible deck structure and viewing terrace.
- 14 External beach shower.







Artists impression of the proposed foreshore park improvements

1:250 0 5 10 15 20 25m



Dune stabilisation fence to be set back/down to enhance open views to the beach from the reserve

Flexible open lawns for community events



Proposed new trees to provide shade on the beach edge

Re-vegetated edge to the beach

Proposed new boardwalk to connect reserve to headland

bbq's & shade shelters

A change in materiality highlights potential conflict point

- Legend**
- 01** Large open turf lawn to facilitate temporary events, activation and play. Potential location for community markets and stalls.
  - 02** Pockets of lawn provide picnicking opportunities adjacent the re-vegetated dunes.
  - 03** New wayfinding, signage and artwork opportunities at parkland gateways and key nodes, with the potential to incorporate a heritage overlay.
  - 04** Potential market set-up, utilising the verge for stalls and creating a promenade.
  - 05** Small informal events lawn.
  - 06** Existing boat ramp is retained.
  - 07** New SLSC car park with boat trailer parking and overflow area adjacent the new Surf Life Saving Club.
  - 08** Relocated fish cleaning station.
  - 09** Re-vegetation and stabilisation of the dune with native species, including groves of Pandanas trees.
  - 10** A new accessible deck with shade structure and viewing terraces.
  - 11** New accessible boardwalk provides a legible connection between the reserve and the existing headland path.
  -  Exercise station - to include a variety of equipment for various user groups, for example accessible stations, playful elements and static elements.
  -  Accessible parking provision.



Open Space Parkland

Proposed Lookout Pavilion

Boardwalk Connection to headland

Existing vegetation retained and protected

Artists impression of the proposed headland lookout shelter & pathway improvement works





Proposed shelter to provide protection from sun & wind

Open lawns

Proposed new boardwalk to connect reserve to headland

**Legend**

- 01** Re-vegetated areas reducing the extent of grass areas to be maintained.
- 02** New accessible floating deck provides a legible connection between the reserve and the existing headland path.
- 03** Existing open lawns are retained.
- 04** A new lookout deck with seating. Existing shelter to be upgraded.
- 05** Existing lookout retained.
- 06** Parking on Pollack Esplanade is formalised, with shade trees planted on property boundaries to maintain residents views.
- 07** Additional seating provided along Pollack Esplanade within the reserve, capitalising on ocean views, as well as near the proposed exercise node.
- 08** Existing shelter to be retained and upgraded.
-  Exercise station - to include a variety of equipment for various user groups, for example accessible stations, playful elements and static elements.
-  Accessible parking provision.

1:250



01

07

03

07

01

01

07

03

Pollack Esplanade

Proposed new concrete footpath to connect reserve to headland



# Concept Design

## Integrated Playscape Concept\*

### Design Response

Woolgoolga's unique history and landscape is celebrated through a journey that transects both place and time, taking children and parents alike on a journey of discovery that engages the senses.

### Understanding

- Create an integrated nature playscape that contains elements that are; stimulating, educational, suitable for children of all abilities and inclusive for children, parents and carers.
- Provide opportunities to engage with the unique European and indigenous history of Woolgoolga through interpretative play elements and educational signage.
- The play elements are seen as 'events' along a series of activity trails, that when combined, creates an adventurous, exploration through the site.
- These elements may contain static objects and/or be capable of providing the opportunity for an 'event' overlay that responds to learning activities developed by local schools and groups. These events can be used during school holidays, open days or festivals.



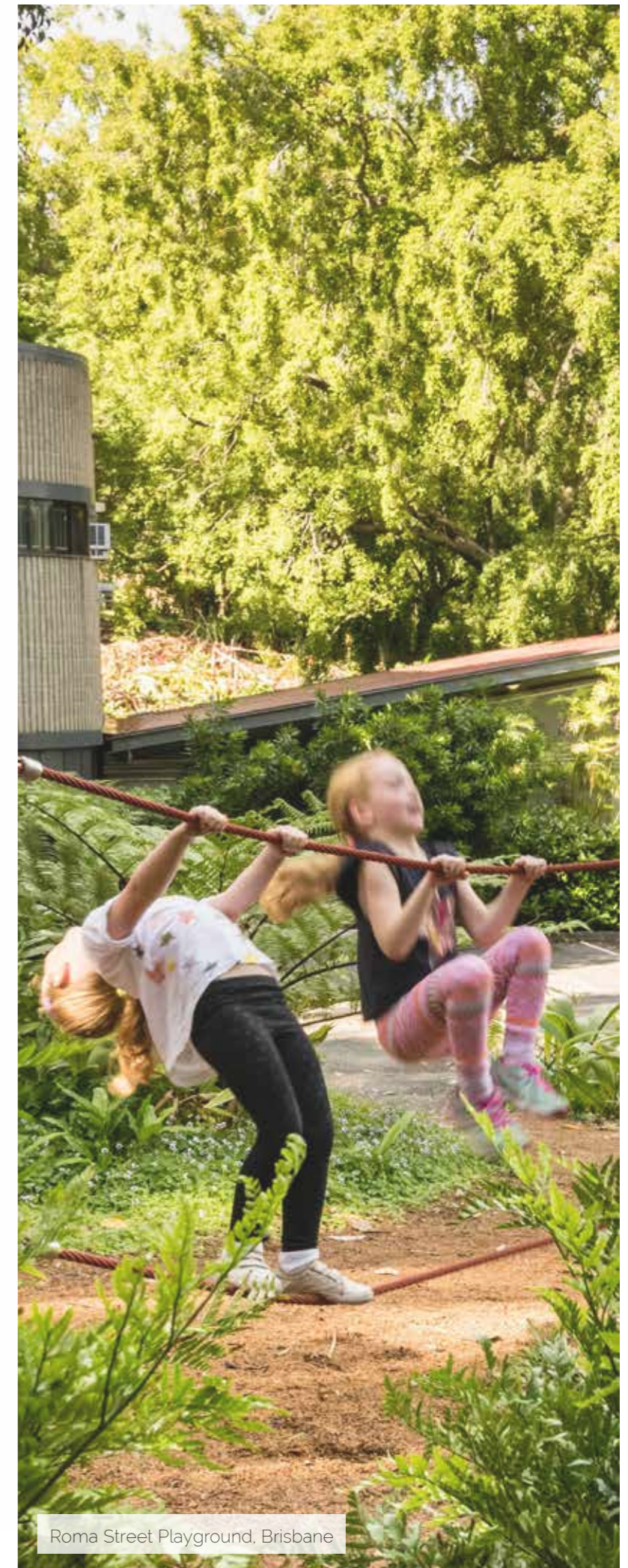
\*This concept plan is indicative only and subject to future detail design and staging considerations.

# Staging Diagram

## Stage One Scope of Works

- Demolition of existing playground
- Provision of new amenities building
- Provision of new pathways highlighted
- Relocated playground
- Screening vegetation to caravan park interface
- shade structures over play areas

Note: all other areas in future works will be turfed



Roma Street Playground, Brisbane



### theme: the forest

The journey begins, or ends, by exploring the pre-european landscape and learning about unique flora and fauna endemic to Woolgoolga.



### Experiences

- climbing
- hiding
- crawling

### A Local Story

- the local geography and landscape
- indigenous use of local flora and fauna

### Physical Elements

- low ropes
- climbing logs
- hideout cubbies



### theme: the clearing

Here we discover how european settlement has impacted the natural landscape.



### Experiences

- climbing
- running
- jumping

### A Local Story

- local industries e.g. timber milling and livestock grazing

### Physical Elements

- totem poles
- balance beams
- cut timber



### theme: the hills

In this hills we explore how the beginnings of agriculture influenced our town.



### Experiences

- rolling
- sliding
- climbing

### A Local Story

- agriculture and productive gardens

### Physical Elements

- grassed mounds
- slides
- rock walls
- productive gardens





### theme: the dunes

Here we discover multiple journeys that provide a tactile sensory experience.



### theme: the beach

Misting elements and rocky outcrops draw the natural landscape into the playscape. Discover hidden relics from Woolgoolga's past in the sand.



## Integrated Playscape Concept\*

### Creating a journey

The design of the playground should create an engaging journey and unique experience that engages with Woolgoolga's unique history and culture.

Key ideas and opportunities for consideration within future design development are discussed opposite.

\*This concept plan is indicative only and subject to future detail design and staging considerations.

### Experiences

- walking
- discovery

### A Local Story

- the importance of dune systems and their vegetation

### Physical Elements

- shade trees
- mounded vegetated earth
- adventure trails

### Experiences

- misting
- digging
- discovery

### A Local Story

- local industrial history
- 'Buster' and other relics
- marine life

### Physical Elements

- sand pits
- misting elements
- hidden objects

# Concept Design

## Amenities Design Concept

### Current Provision

	Male	Female	PWD	Comments
<b>WC's</b>	2	4	1	No pwd shower and wc may not be currently compliant
<b>Urinals</b>	3			Trough
<b>WHB</b>	3	3		Stainless steel
<b>Showers Int</b>	3	3		Internal, changing bench outside shower cubicle
				General Comments
				Dated buildings, inefficient layout
				Poor access and visibility/CPTED issues
				No PWD shower or provision for left and right handed access
				No provision for Changing Places
				Good ventilation and daylight provision
				No provision for ambulant disabled access
				Buildings do not contribute to identity of Woolgoolga

### Proposed Provision\*

	Male	Female	PWD	Comments
<b>WC's</b>	4	3	1	Incorporate additional showers and changing table into pwd wc.
<b>WHB</b>	2	2		Unisex shared off common entry lobby
<b>Showers Ext</b>	3			Unisex external, open to reserve
<b>Store/Cleaners Cpd</b>				Integrate 1 cpd - optional
<b>Changing Places WC</b>			1	
				<b>General Comments</b>
				Contemporary architecture that complements Woolgoolga's unique character
				Highly visible single access
				Provide high levels of ventilation and natural daylight
				Easy to maintain and secure
				WHB's unisex off common lobby
				Consider provision of Changing Places facility
				Consider integration of storage/cleaner's cpd

\*Feasibility analysis of amenity provision was carried out based on a review of exemplar amenities in coastal locations in NSW - refer to Appendix A. As a result it was determined that a single amenities block with the above provision would adequately service the reserve.

PWD - Person with disability

WHB - Wash hand basin

Cpd - cuboard

## Preferred Design Concept

Amenities block incorporating a PWD WC's and a changing places facility, as well as shared wash hand basins and showers. High levels of physical and visual access. A single distinctive building.

### Why should the amenities be bespoke?

During the community engagement sessions there was strong support for the new amenities building to be purpose designed to reflect Woolgoolga's unique character and lifestyle.

Key ideas that received strong support were:

- 'Cool loos' - contemporary bespoke buildings
- Lightweight and naturally ventilated structures
- Integration of Changing Places equitable facilities
- Potential to incorporate a lookout/kiosk
- Exploration of an integrated amphitheatre
- Located close to the beach

### Amenities building character imagery



# Materials Palette

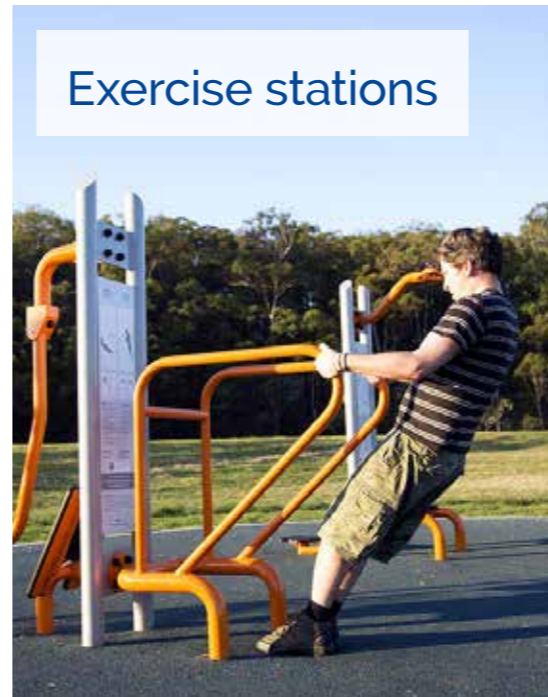
## Character & Materiality



## Wayfinding and interpretive signage elements



## Exercise stations



## Incorporating relics from Buster & the old jetty

During the concept design period, New South Wales National Parks and Wildlife have notified CHCC that they have in their possession authentic relics from 'Buster' and the old Woolgoolga Pier. These items, (see below) could be creatively incorporated into the beach reserve to enrich the story of Woolgoolga's history. Some suggestions from the re-use of these items are listed below:

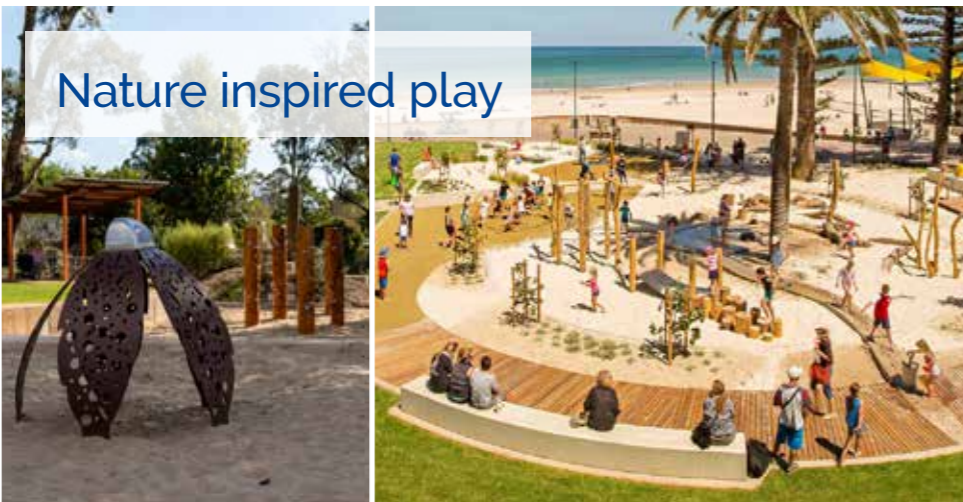
- Incorporated as artwork 'totems' (see photo adjacent for reference)
- Incorporated into seat elements

Alternatively, CHCC could engage local artists to engage with the materials in a new way.

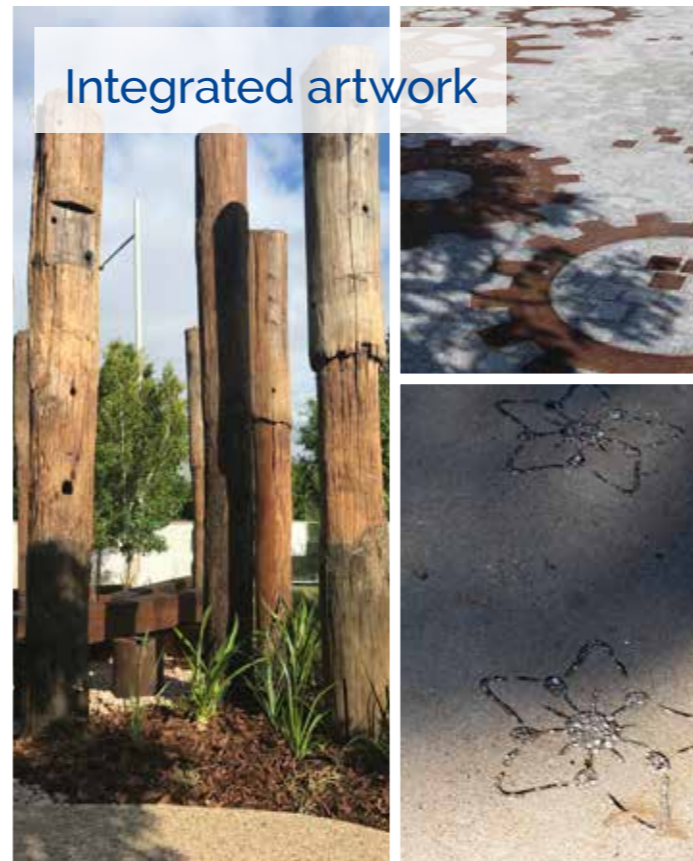
## Pier timber elements



## Nature inspired play



## Integrated artwork



## Buster timber elements



## Colour palette



# Planting Strategy

## Planting Character

### Parkland

#### Design philosophy

Pre-European settlement, lilly-pillies and native vegetation formed thickets behind the sand dunes, in semi shaded gullies on rainforest margins along the coastal plain. These areas were relished by local Aborigines, and the name Woolgoolga is believed to have come from the word wei-gul-gas.

The planting strategy draws upon the unique history and character of Woolgoolga, re-introducing native coastal species into the reserve to provide a variety of spaces with different qualities to inhabit.

The reserve has been divided into broad planting character areas, referenced on the page over.

This planting palette is intended as a guide for future works within the reserve, with the goal of reinforcing and generating a strong sense of place that is unique to the Woolgoolga Beach Reserve.

#### Key Design Outcomes

- Street tree planting and retention of existing Norfolk Pines
- Use of iconic species to celebrate coastal character
- Legacy planting of large shade canopy and parkland trees
- Coastal foreshore planting and re-vegetation



# Planting Character Zones



## planting typologies

- 1** Dunal Vegetation Planting

Restore existing dunes and support biodiversity through the use of self-sustaining endemic coastal species, that require minimal maintenance once established.
- 2** Coastal Banksia Shrubland

The existing character of the native back dune vegetation is extended and drawn into the parkland.
- 3** Kangaroo Grasslands

Exposed headland areas are re-vegetated with native grass species with scattered shrubs and shade trees to provide a wind break and maintain views.
- 4** Coastal Banksia Headland

A dense ground layer of grasses is sheltered by coastal banksias and she-oaks, extending the existing character of the remnant vegetation in this area.
- 5** Forest Buffer Planting

Groves of native shade trees and dense understory planting create semi shaded pockets of forest to explore and play, while providing a soft interface and screening element between the caravan park and parkland that reconnects the reserve to the creek.
- 6** Parkland

Low, hardy species create a transition between the urban streetscape and the coastal foreshore.
- 7** Low Coastal Planting

Planting in this area is kept low to ensure views from the caravan park and cabins are retained. Slight undulations in topography create and define more intimate spaces to relax on the lawn.
- 8** Streetscape Planting

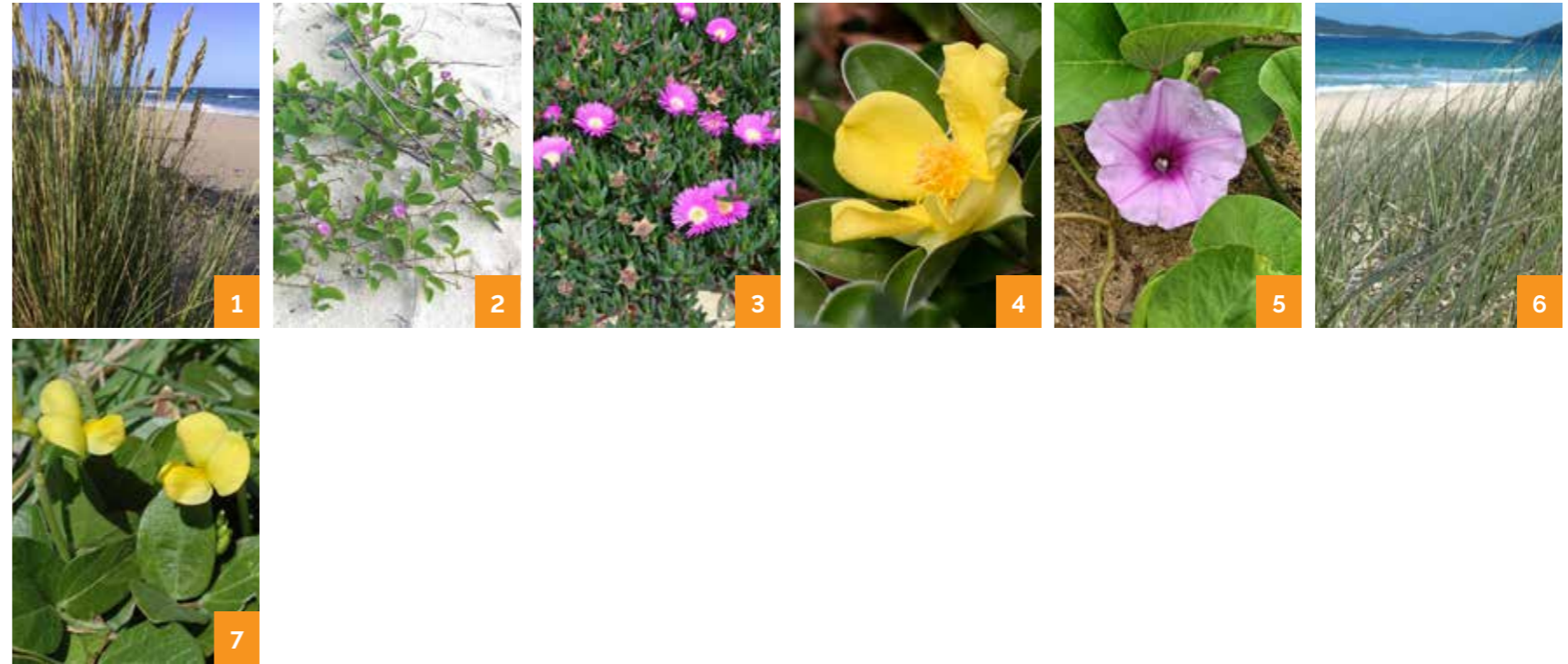
New streetscape planting reinforces the unique coastal setting and existing planting character (e.g. Norfolk Pines).

# Planting Palette

## Dunal Vegetation Planting and Re-vegetation

### Ground Covers

- |                                    |                     |
|------------------------------------|---------------------|
| 1. <i>Austrofestuca littoralis</i> | Beach Fescue        |
| 2. <i>Canavalia rosea</i>          | Beach Bean          |
| 3. <i>Carpobrotus glaucescens</i>  | Pigface             |
| 4. <i>Hibbertia scandens</i>       | Golden Guinea Vine  |
| 5. <i>Ipomoea brasiliensis</i>     | Beach Morning Glory |
| 6. <i>Spinifex sericeus</i>        | Beach Spinifex      |
| 7. <i>Vigna marina</i>             | Beach Pea           |



## Coastal Banksia Hind Dune Vegetation

### Tree Species

- |                                     |               |
|-------------------------------------|---------------|
| 1. <i>Banksia integrifolia</i>      | Coast Banksia |
| 2. <i>Cupaniopsis anacardioides</i> | Tuckeroo      |
| 3. <i>Syzygium australe</i>         | Brush Cherry  |

### Mid Layer

- |  |                  |
|--|------------------|
| 4. <i>Acacia longifolia</i> subsp. <i>sophorae</i> | Coast Wattle     |
| 5. <i>Acronychia imperforata</i>                   | Beach Acronychia |
| 6. <i>Alectryon coriaceus</i>                      | Beach Alectryon  |

### Ground Covers

- |                                  |                      |
|----------------------------------|----------------------|
| 7. <i>Dianella congesta</i>      | Beach Flax Lily      |
| 8. <i>Imperata cylindrica</i>    | Blady Grass          |
| 9. <i>Lomandra longifolia</i>    | Mat grass            |
| 10. <i>Viola hederacea</i>       | Native violet        |
| 11. <i>Pteridium esculentum</i>  | Bracken Fern         |
| 12. <i>Zoysia macrantha</i>      | Prickly Couch        |
| 13. <i>Oplismenus imbecillis</i> | Creeping beard Grass |





## Kangaroo Grasslands (exposed areas)

### Tree Species

1. *Banksia integrifolia*

Coast Banksia

### Shrubs

2. *Hibbertia scandens*
3. *Ozothamnus diosmifolius*
4. *Pultenaea maritima*

Golden Guinea Vine  
Rice Flower  
Coastal Bush Pea

### Ground Covers

5. *Cynodon dactylon*
6. *Themeda triandra*
7. *Zoysia macrantha*
8. *Polymeria calycina*
9. *Apium prostratum*
10. *Xerochrysum bracteatum*

Blue Couch  
Kangaroo Grass  
Prickly Couch  
Slender Birdweed  
Sea Celery  
Everlasting Daisy



## Coastal Headland Swamp Oak Shrubland

### Tree Species

1. *Allocasuarina littoralis*
2. *Casuarina glauca*

Black She-Oak  
Swamp Oak

### Mid Layer (sparse)

3. *Acronychia imperforata*
4. *Cupaniopsis anacardioides*
5. *Cryptocarya triplinervis*

Beach Acronychia  
Tuckeroo  
Three Veined Laurel

### Ground Covers

6. *Oplismenus aemulus*
7. *Themeda triandra*
8. *Viola hederacea*

Basket Grass  
Kangaroo Grass  
Native violet



# Planting Palette

## Forest Buffer Planting

### Tree Species

1. *Callistemon salignus*
2. *Corymbia intermedia*
3. *Eucalyptus tereticornis*
4. *Lophostemon suaveolens*
5. *Melaleuca quinquenervia*

- Willow Bottlebrush
- Pink Bloodwood
- Forest Red Gum
- Swamp Box
- Broad-leaved Paperbark

### Mid Layer

6. *Allocasuarina littoralis*
7. *Hakea dactyloides*

- Black She-Oak
- Broad Leaved Hakea

### Ground Covers

8. *Hibbertia aspera*
9. *Lomandra hystrix*
10. *Lomandra longifolia*
11. *Pennisetum alopecuroides*
12. *Poa Poa labillardierei*

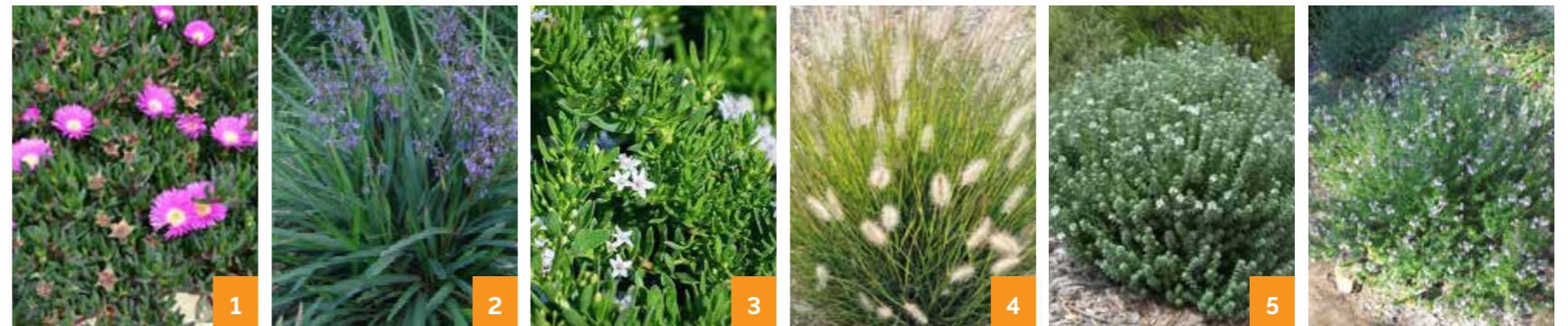
- Guinea Flower
- Green Mat-Rush
- Mat Rush
- Fountain Grass
- Tussock Grass



## Low Coastal Planting

1. *Carpobrotus glaucescens*
2. *Dianella congesta*
3. *Myoporum ellipticum*
4. *Pennisetum alopecuroides*
5. *Westringia fruticosa*
6. *Westringia eremicola*

- Pigface
- Beach Flax Lily
- Coastal Myoporum
- Fountain Grass
- Coastal Rosemary
- Slender Westringia

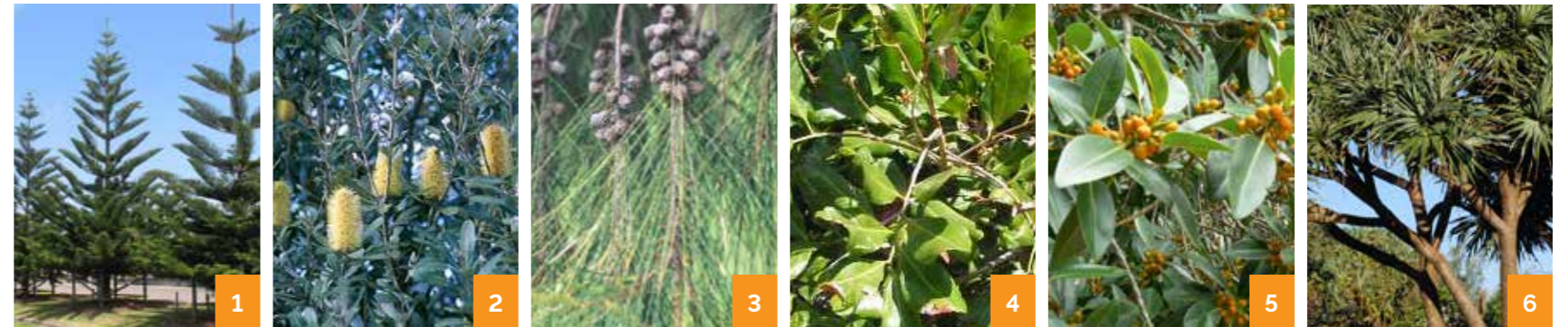


## Parkland

### Tree Species

1. *Araucaria heterophylla*
2. *Banksia integrifolia*
3. *Casuarina glauca*
4. *Cupaniopsis anacardioides*
5. *Ficus rubiginosa*
6. *Pandanus pedunculatus*

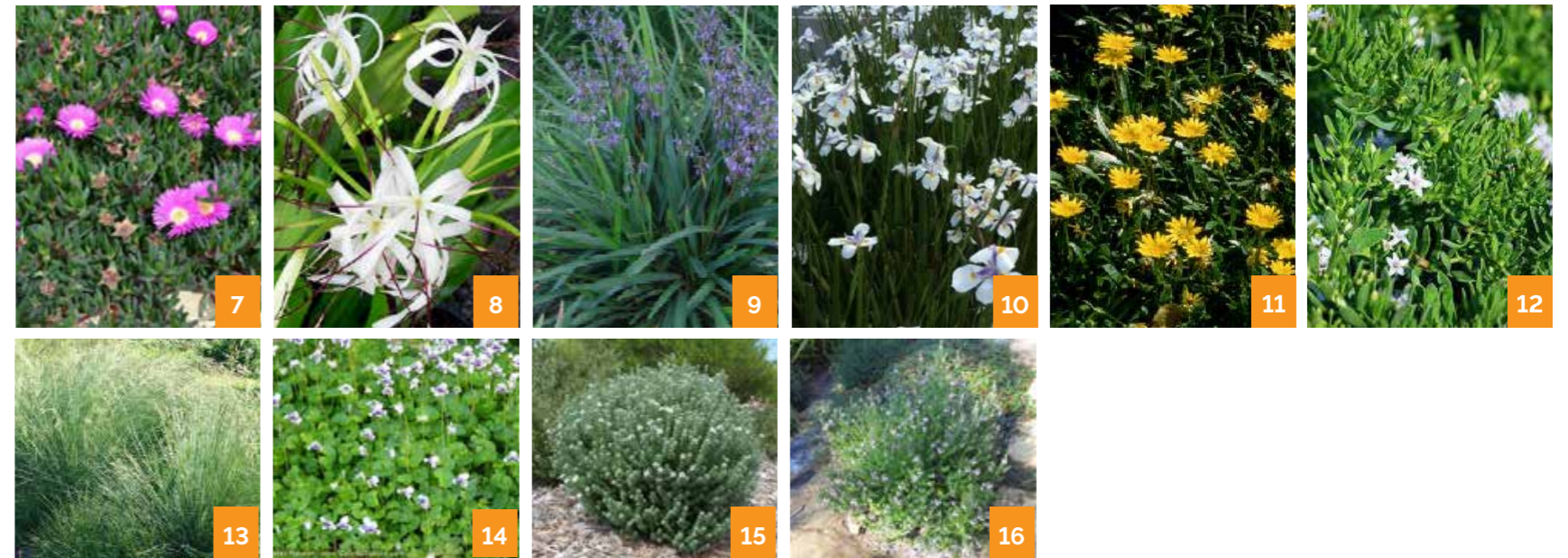
- Norfolk Island Pine  
Coast Banksia  
Swamp Oak  
Tuckeroo  
Port Jackson Fig  
Pandanus Palm



### Ground Covers

7. *Carpobrotus glaucescens*
8. *Crinum pedunculatum*
9. *Dianella congesta*
10. *Dietes grandiflora*
11. *Gazania rigens*
12. *Myoporum ellipticum*
13. *Poa labillardieri* var. *labillardieri*
14. *Viola hederacea*
15. *Westringia fruticosa*
16. *Westringia eremicola*

- Pigface  
Swamp Lily  
Beach Flax Lily  
Wild Iris  
Coastal gazania  
Coastal Myoporum  
Tussock Grass  
Native violet  
Coastal Rosemary  
Slender Westringia



## Streetscape Planting

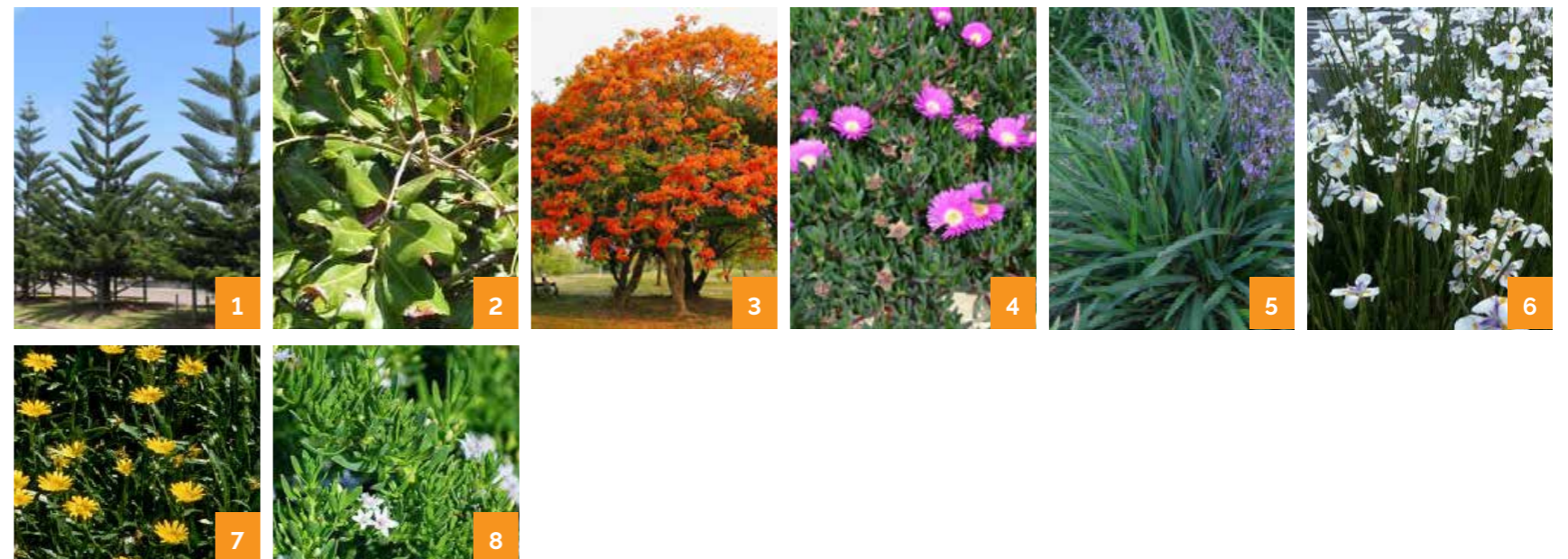
1. *Araucaria heterophylla*
2. *Cupaniopsis anacardioides*
3. *Delonix regia*

- Norfolk Island Pine  
Tuckeroo

### Ground Covers

4. *Carpobrotus glaucescens*
5. *Dianella congesta*
6. *Dietes grandiflora*
7. *Gazania rigens*
8. *Myoporum ellipticum*

- Pigface  
Beach Flax Lily  
Wild Iris  
Coastal gazania  
Coastal Myoporum





# Appendix A

---

**WOOLGOOLGA BEACH  
RESERVE SUPPLEMENTARY  
INFORMATION**

# Strategic Context

## Planning Process To Date

The Woolgoolga Beach Reserve Masterplan is the first project to be delivered after the adoption of the new Woolgoolga Town Centre Masterplan.

Planning policy, strategies, documents and community engagement sessions have all informed the process to date.

This report builds on priorities set out in both the adopted town centre masterplan and the Woolgoolga Beach Reserve Plan of Management.

### State and Local Plans



### POPULATION GROWTH AND COMMUNITY CHANGE

### Informing Strategies & Approvals



### URBAN AND ENVIRONMENTAL CHANGE

### Community Engagement



## Woolgoolga Beach Reserve Masterplan



# Strategic Context

## Key Informing Strategies and Initiatives

### CHCC Open Space Strategy 2010 "Connecting Parks and People"

The Open Space Strategy aims to guide the planning, development and management of the public open spaces and detail Council's intent in relation to the protection, development and management of its open space network.

In relation to Woolgoolga Beach Reserve, the following actions are identified

- Provision for events including theatre, music and arts in public open space at appropriate times;
- Creation of a connected open space network that can provide a range of functions including social and family recreation;
- Development of a Masterplan (this project)
- Embellish to a District Social Family Space
- Formalise walkway around Woolgoolga Headland, as part of Solitary Islands Coastal Walkway.

The attributes of a District Social Family Space are:

- Meeting place; shade and shelter, seating and drinking water, access to nature, all accessible to people with a disability;
- Some areas to have picnic/barbecue, toilets; additional facilities might include skate facilities, free access tennis and basketball courts, etc;
- Some to have irrigated green lawns, formed path (not necessarily sealed) and lights and rubbish collection system;
- Mix of four or more recreation activity areas catering for broad cross-sections of the community;
- Incorporation of natural features for play;
- Inclusive of people with disabilities;
- "Play" provisions also apply;
- Preferably minimum size 2 hectares. Provision of toilets;
- Integration with existing walkways/cycleways, and link to off-road trail networks

### Plan of Management

The endorsed Plan of Management provides a framework for the future management, use and development of the southern section of the Woolgoolga Beach Reserve.

Vision statement:

"To conserve and maintain the natural and scenic environmental values of the Woolgoolga Beach Reserve while providing a range of recreational and tourist facilities and opportunities to address the economic and social needs of local residents and visitors to the region."

Some of the plans most significant initiatives include:

- Demolition of the existing Holiday Park Manager's residence and office, and development of a new residence and office;
- Relocation of the Holiday Park entry and exit to Wharf Street, removal of large areas of hard surface, and demolition and replacement of the existing public amenities in Beach Street;
- Contraction of the footprint of the Holiday Park to expand the area and extent of the public domain open space along Beach Street;
- Development of a pedestrian pathway system to link the Town Centre to the beachfront;
- Relocation of Woolgoolga Marine Rescue to Arrawarra, as part of Council's wider strategy for boating in the LGA;
- A new Woolgoolga Surf Life Saving Club; and
- Relocation and expansion of playground, including shade sails and improved disabled access.

The implementation of these proposals and the impact on adjoining areas will result in a transformation of the Reserve, which will revitalise the character of the Town Centre.

### Woolgoolga Town Centre Masterplan

The Masterplan was adopted in 2018 and plays a critical part in guiding the orderly development and revitalisation of the southern section of Woolgoolga Beach Reserve.

The transformation of the beach reserve is essential to provide a vibrant waterfront and outdoor activity area for Woolgoolga, that integrates the waterfront with the town centre and the holiday park.

The masterplan presented a vision and strategic planning framework to guide development and enhancement of the southern section of Woolgoolga's beach reserve for the next 20 years to 2036.

Key initiatives from the masterplan include:

- Reinforcing the Beach Street axis as the town centre arrival point, by opening up views to the headland.
- Celebrating the coastal setting through public realm design character;
- Regenerating regionally significant coastal vegetation and drawing this local character into the reserve;

## Council's Lifeguard Service

Coffs Harbour City Council employs a professional lifeguard team to patrol the City's most popular beaches and to promote surf safety education.

Woolgoolga Beach is patrolled every day between the commencement of the NSW School Holidays in September until the completion of the NSW School Holidays in April of the following year.

The local Surf Life Saving Club patrols the beach on weekends and public holidays, while Council employed Lifeguards patrol the beach during the week.

# Site Analysis

## Views and Visual Setting

### The Landscape Setting

The Beach front reserve captures many of the visual qualities characteristic of NSW North Coast coastal settlements. There is an overall sense of openness and spaciousness. The defining characteristics of the reserve include:

- Generous beach front green spaces and parkland ;
- Expansive panoramic views from the headland of the coastline, Solitary Islands and hinterland ranges;
- Existing mature vegetation, shade trees and dune vegetation; and
- The prominent location of the caravan park.

### Key Views

1. Lack of visual connection between Beach Street approach and the ocean/headland;
2. Lack of visual connection from Beach Street alfresco dining to the beach;
3. Open space viewed from Pollock Esplanade;
4. Expansive panoramic views from the headland of the coastline, Solitary Islands and hinterland ranges;
5. Headland and beach front open space views from Hofmier Close; and
6. Views of the headland and beach reserve from the beach.



View towards Woolgoolga Beach Reserve from Beach Street



Existing pedestrian crossing and amenities, corner of Beach Street and Ocean Street



Beach front open space viewed from Pollock Esplanade, looking north



View along Woolgoolga Beach to the north from the reserve near Pollock Esplanade, looking north



Looking towards the headland from the existing SLSQ



Woolgoolga Beach, looking south





# Site Analysis

## Micro Climate

### Natural Setting and Topography

The natural environment has significantly influenced the growth and form of Woolgoolga and will continue to influence its future form.

The town lies below a steeply rising inland range and within a narrow coastal plain of undulating terrain, low lying flats and the coast with its beaches, headlands and dune system. Approximately half of the town centre area is low flat coastal plain and impacts include:

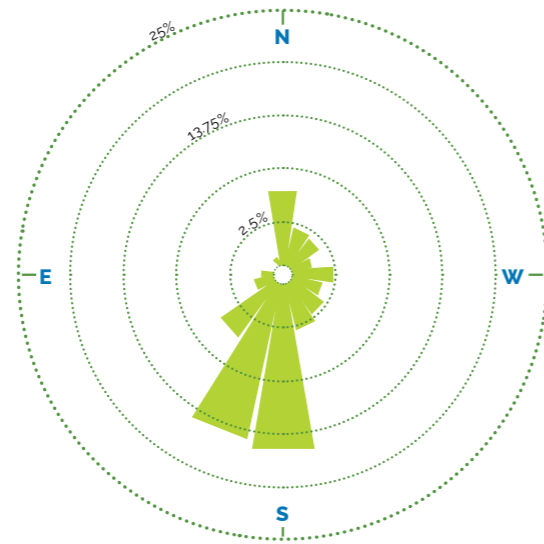
- Low lying flood prone land generally north of Beach Street but also including the Beach Street Village Precinct and Centennial Park areas; and
- Environmental controls on land use addressing coastal hazard along the beach front.

Elevated land on the headland and southern parts of the town centre rise relatively steeply and are predominantly occupied by low density residential housing.

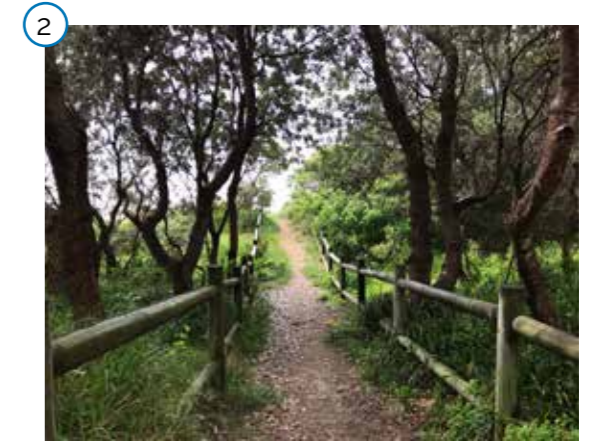
Much of the native flora within the town has been displaced except for coastal wetlands east of Trafalgar Lane, the riparian environments of Woolgoolga Creek and Jarrett Creek and natural foreshore and dune vegetation at the northern end of the beach reserve.

### Wind

Woolgoolga beach provides shelter and protection from moderate southerly swells and strong southerly winds.



*The beach front - erosion is an ongoing issue*



*Remnant native dune system vegetation*



*Remnant vegetation on the headland*



*Iconic Norfolk Pines*



*Shade on the beach edge*

### Legend

- Existing significant vegetation
- Existing dune
- Contours



# Site Analysis

## Natural Hazards & Flooding

### Natural Processes and Hazards

The coastal location and natural setting require a strategic approach to managing the impacts of natural hazards that include:

- Flooding;
- Coastal hazards; and
- Climate change, including sea level rise and possible increased rainfall intensity and resultant impacts on both flooding and coastal hazards.

Council's MyCoffs Community Strategic Plan contains the following commitments:

- *We understand the challenges to our natural environment and act to mitigate them; and*
- *We are adapting for climate change and we work corroboratively to mitigate our impacts.*

Guidelines for incorporating sea level rise into flood risk and coastal hazard assessment are proposed to be revised as part of the NSW Government's current coastal reform process. Coffs Harbour City Council has developed a range of policies and programs that allow for ecologically sustainable growth in coastal areas while addressing the risk to life and property from coastal hazards and flooding.

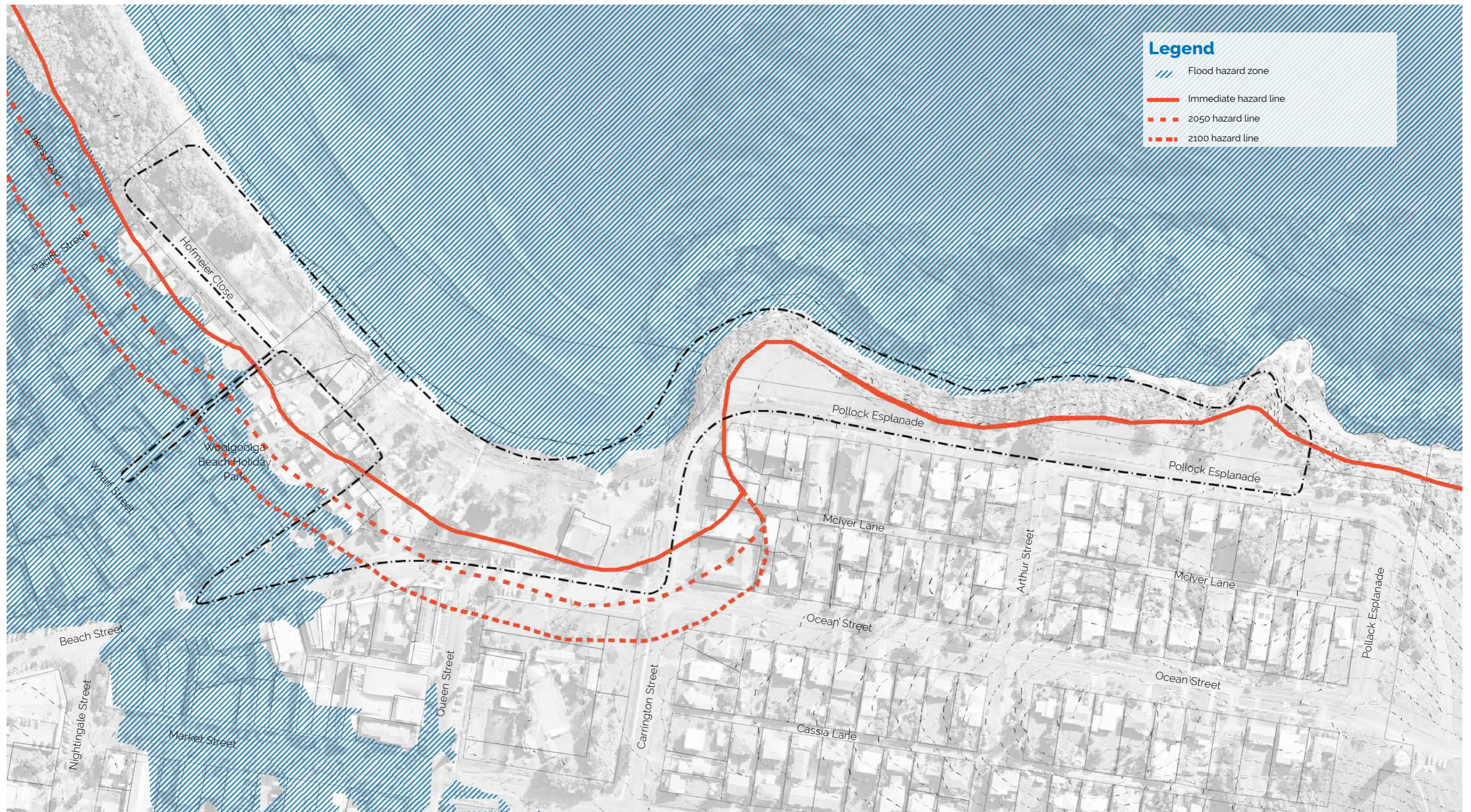
Council's Climate Change Policy adopts a sea level rise benchmark for the Coffs Harbour Local Government Area (LGA) as a 91cm increase by 2100 (above 1990 mean sea levels).

### Coffs Harbour Coastal Zone Management Plan

Council adopted the Coffs Harbour Coastal Zone Management Plan in 2013. The plan identifies strategies to lessen potential coastal hazard impacts.

Strategic guidance is provided within the plan on coordinated, integrated and ecologically sustainable development of the coastline affected by coastal hazards. The Plan also establishes strategies for the protection of fragile coastal environments into the future. The Plan forms the basis for future management and strategic land use planning of the coastal zone in the Coffs Harbour local government area to enable growth and development that minimises risk to the natural, cultural and heritage values of the coast.

Council's adopted coastal zone management plan has informed the Woolgoolga Town Centre Masterplan.



# Site Analysis

## Existing Park Infrastructure

### Key issues

- Existing park infrastructure is dated and creates visual clutter in the reserve, impeding key views from Beach street to the headland.
- Existing amenities building is dated and noncompliant with current standards. There are also CPTED (Crime Prevention Through Environmental Design) issues with regards to concealed access and potential entrapment points.
- Existing shade shelters are also dated and block key views through the park to the beach from Beach Street.
- Generally, existing park infrastructure does not compliment or add to the presentation of the reserve. This is compounded by the variety of styles and quality of elements.
- Existing beach access points are noncompliant and inadequate for the potential future use of the reserve as an accessibility focused beach.
- Existing access to Woolgoolga Beach Caravan Park and the location of the reception/manager's building dominates the Beach Street address adjacent to the reserve and creates conflict between pedestrians and motorists.
- There is indistinct separation between the caravan park, reserve and streetscape.



Existing Surf Club



Existing playground



Existing Woolgoolga Beach Caravan Park



Existing amenities



Existing shelter structures



Existing Marine Rescue



Existing carpark and boat ramp



Existing fish cleaning station



# Site Analysis

## Movement Networks

### Pedestrian and Cycle Movement

- The town centre and reserve are characterised by unformalised, disconnected networks with poor legibility, that impact on pedestrian and cycle comfort, safety and convenience.
- The existing streetscapes is a car dominant environment, which detracts from pedestrian safety, comfort and reduces visual amenity.
- The interconnected street grid provides a good base for active transport facilities to be improved upon in the future, although some new subdivisions feature curvilinear street patterns and disconnected cul-de-sacs that increase walking distances and reduce network legibility.
- The Heritage Walk along Beach Street, the Woolgoolga Whale Trail and the Solitary Islands Coastal Walk provide valuable tourism experiences that engage settlement history and the landscape, although some accessibility and safety issues exist. These trails are assets to the town and need to be supported by better quality paths in some places for safety and accessibility reasons.

### Caravan Park Entry

- Council and the State Government have committed to the relocation of the caravan park entry from Beach Street to Wharf Street. The new entry driveway has been constructed, and this new access arrangement will support the growth and revitalisation of the Beach Street by:
  - Significantly increasing opportunities for the enhancement of the beach reserve parkland;
  - Avoiding conflict with greater pedestrian movement between the centre and the beach as the centre matures; and
  - Minimising vehicle conflict points on Beach Street and improving safety.



1 Pedestrian crossings are not prioritised



2 Existing access to the north of the reserve



3 Existing wayfinding within the reserve



4 Existing disconnected headland connection



5 Existing beach access



6 Existing beach access from Beach Street

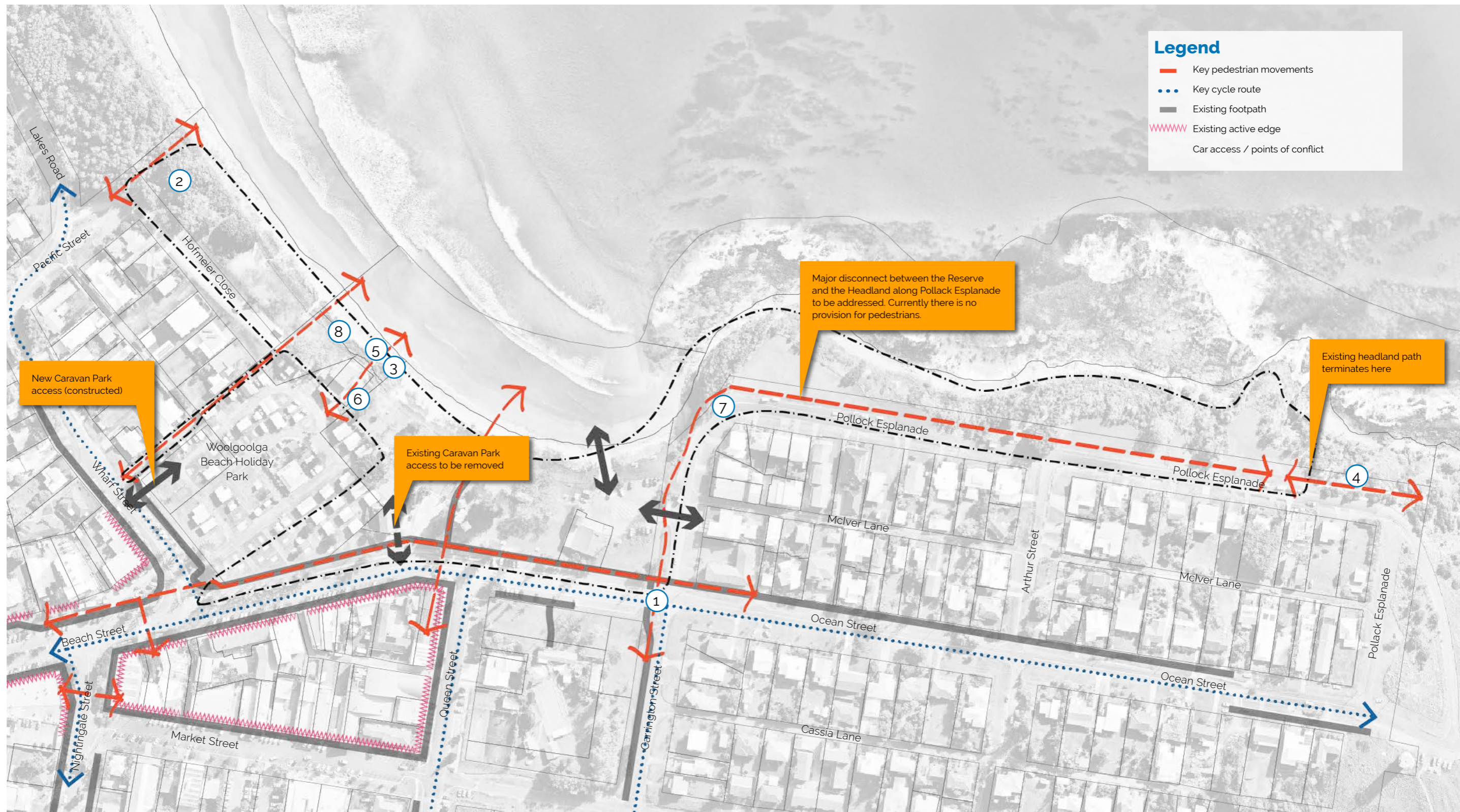


7 No safe access to headland long Pollack Esplanade



8 No existing formal pathway along beach front





**Legend**

- Key pedestrian movements
- ... Key cycle route
- Existing footpath
- ~~~~~ Existing active edge
- ↔ Car access / points of conflict

New Caravan Park access (constructed)

Woolgoolga Beach Holiday Park

Existing Caravan Park access to be removed

Major disconnect between the Reserve and the Headland along Pollack Esplanade to be addressed. Currently there is no provision for pedestrians.

Existing headland path terminates here

# Concept Design

## What We've Heard

### Summary

Lat27, ThreePlus and Coffs Harbour City Council facilitated two drop-in engagement sessions, as well as providing opportunity to engage via the online platform Social Pin Point or submit written feedback.

The cumulative results of 102 online comments, 41 survey responses and 1,153 dots used during the two hands on engagement sessions have been summarised to inform the concept design for the Woolgoolga Beach Reserve.

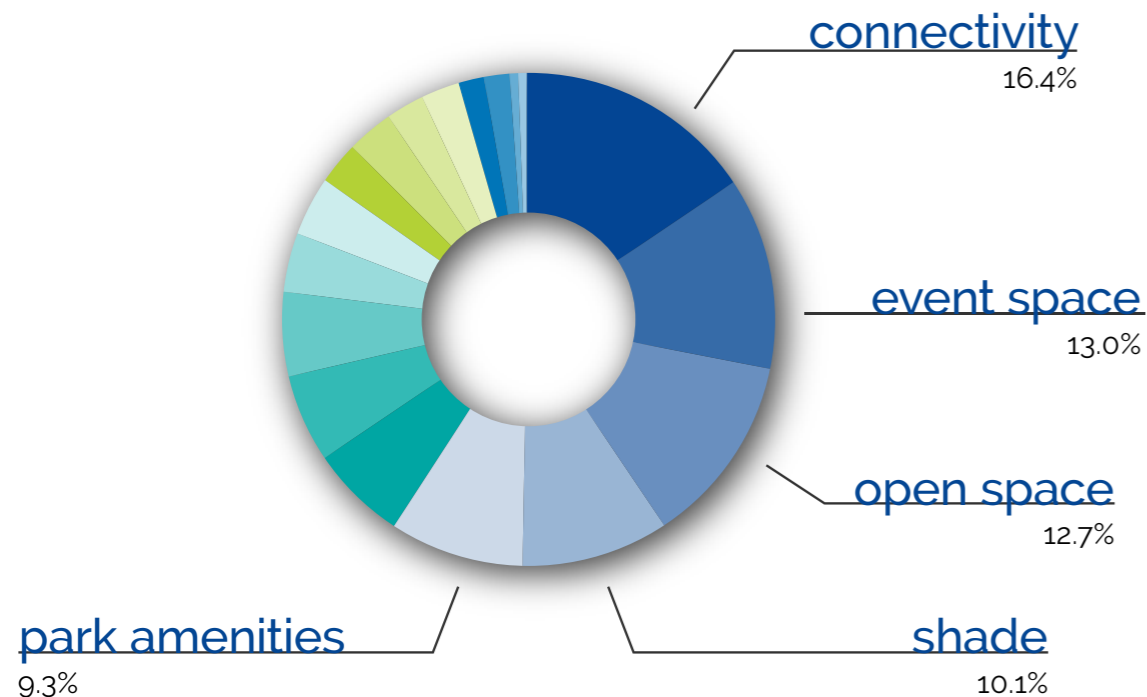
### Top 10 desired outcomes for the reserve

1. More shade and shade tree planting
2. An accessible connection between the reserve and the headland
3. A flexible civic space for events
4. An upgraded playground
5. Upgraded path networks and better connections
6. Flexible open lawns for activities
7. Night-time activation opportunities
8. Picnic and BBQ facilities
9. Exercise stations
10. Access for all ages and abilities



Children exploring creative ideas in the park

### Top 5 most discussed topics



### Topics and key ideas

1. **Connectivity (16.4%)**  
connect reserve to headland; upgrade paths; exercise equipment; places to sit
2. **Event Space (13.0%)**  
flexible civic events space; places to gather; night-time
3. **Open Space (12.7%)**  
flexible open lawns; places to sit; picnics; BBQ'S; lawn games
4. **Shade (10.1%)**  
large shade trees; shade over playground; shade on the beach edge
5. **Park Amenities (9.3%)**  
located next to/within new SLSC; two required; disability toilet/changing places facility; internal and external showers
6. **Vegetation**  
soft edge to beach; retain existing trees; use native species
7. **Accessibility**  
all abilities access; ramp access to beach; retain parking; signage and wayfinding; disabled parking
8. **Parking**  
Hofmeier Close as alternate beach access point; more parking in Hofmeier Close; maintain current capacity; boat trailer parking inadequate; caravan park entry impact
9. **Shelter**  
wind protection; windbreaks; shade structures; ease of maintenance; robust; security
10. **Play**  
safety; inclusive equipment for all ages/abilities; water interaction; sensory play
11. **Wayfinding & Signage**  
clear; at main entries
12. **Lighting**  
lighting along pathways; safety
13. **Artwork**  
reflect local families/culture; reference to old SLSC/buster
14. **Activation**  
SLSC restaurant/bar; beach front activation (coffee shop); new visitor centre
15. **Local History**  
interpretive signage; SLSC memorial; indigenous culture; Buster; WWI memorial
16. **Natural Processes**  
drainage; erosion; protect the foreshore; retain natural edge
17. **Dogs**  
reserve dog-on-leash area; safety; bins/bags for waste; signage
18. **Boat Ramp**  
potential conflict point; parking



Friday night local business engagement session



Participants encouraged to vote for what they felt important



Drawing ideas in the reserve



Capturing all the great ideas



Saturday engagement session in the reserve

# Amenities Analysis

## Recent Relevant Exemplars

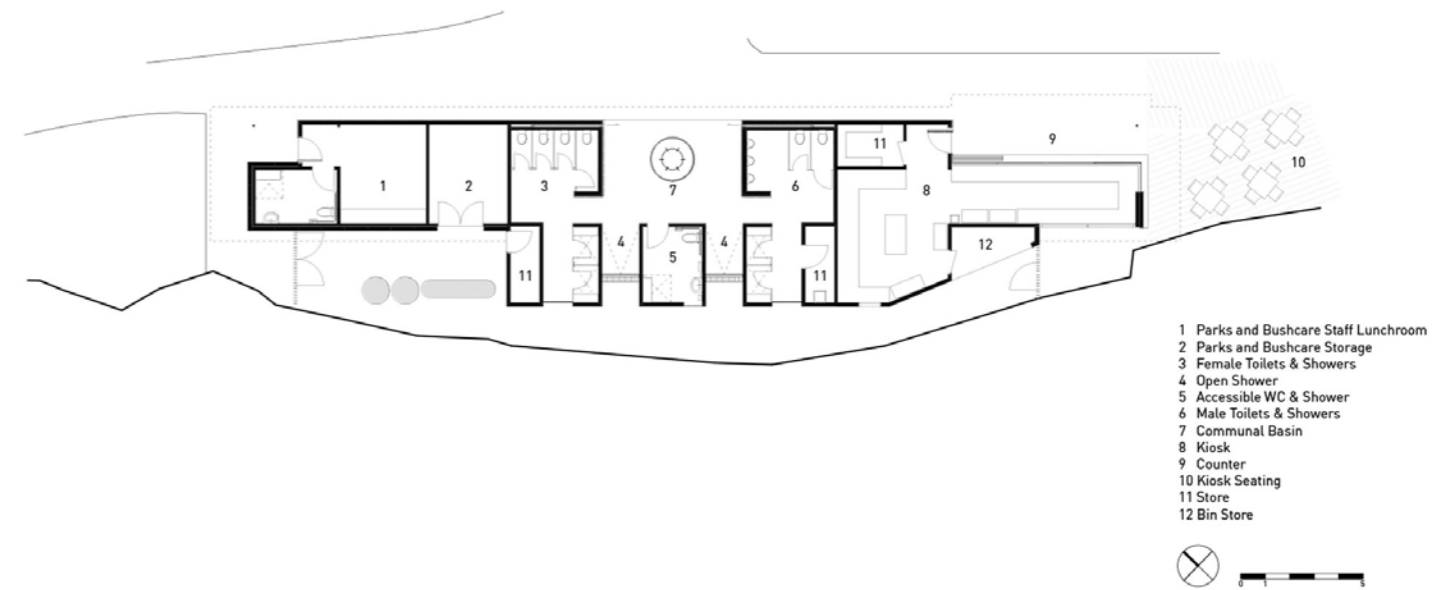
### North Bondi Amenities - Sam Crawford Architects

	Male	Female	PWD	Comments
<b>WC's</b>	4	5	1	M & F include 1 ambulant cubicle. PWD includes family change facilities
<b>Urinals</b>	3			Urinals
<b>WHB</b>	2.5	2.5		5 whb's unisex shared external to entry
<b>Showers Int</b>				None
<b>Showers Ext</b>	3			None
<b>Changing</b>				Small benched areas off M & F wc's
<b>General Comments</b>				
Contemporary award winning architecture, extensive use of timber batten cladding & landscaped roof				
Highly visible access				
High levels of ventilation and natural daylight				
Easy to maintain and secure				
WHB's unisex off common lobby				
No provision of Changing Places facility				
Small integrated cleaners store with sink				



## Tamarama Amenities - Lahznimmo Architects

	Male	Female	PWD	Comments
<b>WC's</b>	2	5	1	M & F include 1 ambulant cubicle. PWD includes family change facilities
<b>Urinals</b>	3			Urinals
<b>WHB</b>	2.5	2.5		Central unisex circular sink/trough, 5 taps in entry vestibule
<b>Showers Int</b>	2	2		Cubicles sized for changing
<b>Showers Ext</b>	1	1		Open showers integrated in entry vestibule
<b>Store</b>	2			2 stores
<b>General Comments</b>				
Contemporary award winning architecture with integrated kiosk & staff facilities, extensive use of timber batten cladding				
Highly visible access				
High levels of ventilation and natural daylight				
Easy to maintain and secure				
WHB's unisex off common lobby				
No provision of Changing Places facility				
Kiosk has; sizeable serving and prep areas, cold room and bin store				



## Port Botany Amenities - CHROFI Architects

	Male	Female	PWD	Comments
<b>WC's</b>	2	2	1	Unisex facilities with 1 PWD wc
<b>Urinals</b>				
<b>WHB</b>	2	2		2 unisex troughs behind timber screens opposite wcs
<b>Showers Int</b>				
<b>Showers Ext</b>				
<b>Store</b>	2			2 stores

### General Comments

Contemporary architecture with large open covered viewing platform, extensive use of timber batten cladding

Highly visible access

High levels of ventilation and natural daylight

Easy to maintain and secure

Provision of 2 stores for coffee cart operator and loose furniture storage

Changing spaces provided

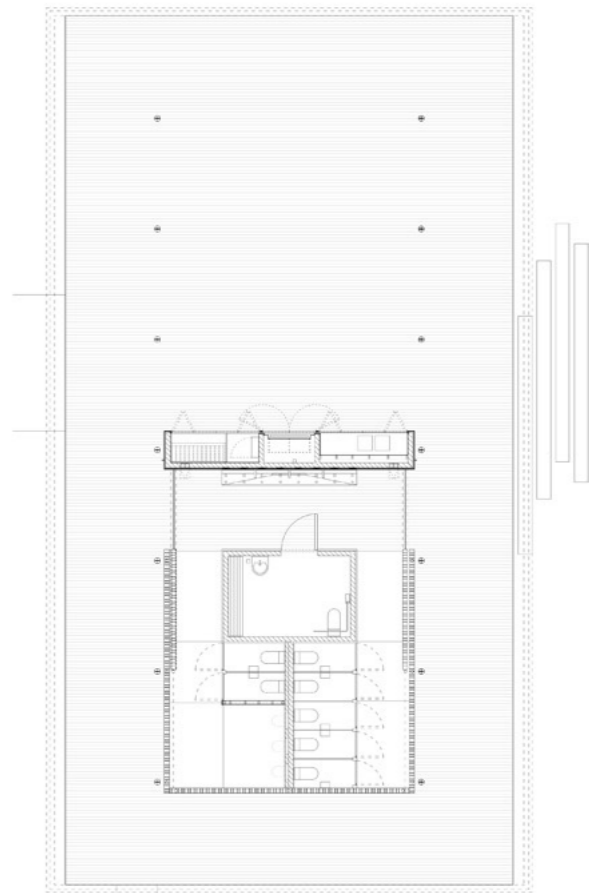
No provision of Changing Places facility

Water bubblers, dog bowls, bicycle racks



## Lizard Log Events Pavilion - CHROFI Architects

	Male	Female	PWD	Comments
<b>WC's</b>	2	5	1	
<b>Urinals</b>	3			
<b>WHB</b>	2.5	2.5		Unisex trough, 5 taps in open entry vestibule
<b>Showers Int</b>				
<b>Showers Ext</b>				
<b>Store</b>	1			1 store for events
				General Comments
				Contemporary architecture with large expressive polycarbonate roof and event platform, extensive use of timber batten cladding
				Highly visible access
				High levels of ventilation and natural daylight
				Easy to maintain and secure
				Large covered performance deck and provision of store and open kitchen for events
				No provision of Changing Places facility



# Strategic Context

## The Endorsed Foreshore Park Concept Plan

Woolgoolga is valued for its unique landscape setting, village feel, sense of openness and its relaxed coastal lifestyle. Residents place high levels of value on the beach and open spaces and the sense of place it bestows on the town.

The Woolgoolga Beach Reserve and headland are the primary recreation assets for the local community and visitors, providing:

- high levels of physical and visual connection to the beach;
- beachfront open space for a wide range of formal and informal recreation uses;
- opportunities to enhance regional coastal connections for pedestrians and cyclists (e.g. Woolgoolga Whale Trail);
- informal, unprogrammed open space to support community activities ;
- a children's playground, which is a popular destination for the local community and visitors.

While there is much to love at Woolgoolga, through community consultation local residents and business owners voiced their strong desire to see the quality of the public realm and built environment enhanced.

### Identified opportunities

- Reinforce the Beach Street axis as the town centre arrival point, by opening up views to the headland, drawing the character of the foreshore back into the town centre
- Connect the town to the reserve through a comprehensive, highly legible pedestrian and cycle network that encourages active transport and supports greater tourism amenity, while engages with the natural assets and settlement history
- Relocate the caravan park entry and caretakers residence
- Deliver integrated design outcomes for the new SLSC facility and beachfront open space
- Create an accessible connection between the headland and the Northern Reserve, connecting to Lakes Road
- Celebrate the coastal setting through public realm design character
- Regenerate regionally significant coastal vegetation and draw the character into the reserve.

### Identified outcomes

Key outcomes identified in the Woolgoolga Town Centre Masterplan for the Beach Reserve included:

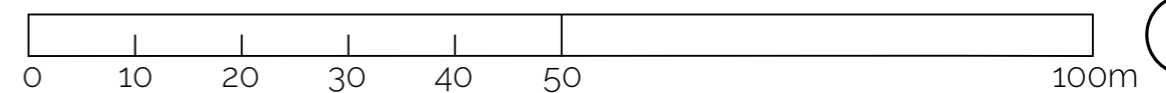
- A hard treatment edge to Beach Street verge to facilitate community events and promenading; A multi-use plaza or 'town square' with distinctive, locally resonant shade structures that can be used for a range of community events
- Pathways enhancing the Solitary Islands Coastal Walk including a series of lookouts and seating opportunities. Shared paths are to be a min. of 3m in high pedestrian use areas, with a min. of 2.4m in other areas
- Integrated artwork elements into key nodes and gathering points
- New tree and landscape planting and selective under-pruning of existing mature trees to open up views
- High quality public amenities
- Provision of inclusive parking, boat trailer parking and an area for overflow boat trailer parking
- Introduce a simple, coordinated signage and lighting strategy to meet community safety expectations
- Ensure a large, open lawn area is maintained and set up for community events, informal recreation, markets ect.
- Provision of event infrastructure such as power, water and signage.







1:1000



# Strategic Context

## The Endorsed Plan of Management

The Woolgoolga Beach Reserve Plan of Management 2016 provides a framework for the future management, use and development of the southern section of the Woolgoolga Beach Reserve.

Council has endorsed the Plan and is seeking the approval of the Plan by the Minister for Crown Land.

The key plan extracted from the document is shown adjacent.



- 1 DEVELOP NEW PREMISES FOR THE WOOLGOOLGA SURF LIFE SAVING CLUB. DETERMINE THE BOUNDARIES FOR THE AREA TO BE LEASED BY THE SURF CLUB. WORK WITH THE CLUB TO ENSURE THE DESIGN FOR THE NEW PREMISES WILL MAKE A POSITIVE CONTRIBUTION TO THE CHARACTER AND FUNCTIONALITY OF THE RESERVE AND FULFIL THE LONG TERM OPERATIONAL REQUIREMENTS OF THE CLUB. PROVIDE PEDESTRIAN ACCESS TO THE CLUB FROM OCEAN STREET AND VEHICULAR ACCESS FROM THE EXISTING CAR PARK OFF CARRINGTON STREET.
- 2 DEVELOP A PEDESTRIAN PATHWAY NETWORK TO LINK THE TOWN CENTRE AND THE PROPOSED SURF CLUB TO THE BEACH AND PUBLIC DOMAIN DAY USE AREAS. PROVIDE OPPORTUNITY FOR SCULPTURAL ELEMENTS, OUTDOOR PERFORMANCES, SEATING AND EXTENSIVE LANDSCAPING WHILE RETAINING SUBSTANTIAL OPEN SPACE AREAS FOR MARKETS AND COMMUNITY EVENTS.
- 3 THE FUTURE OF THE EXISTING LEASE AREA AND SURF CLUB PREMISES TO BE DETERMINED BY THE DEPARTMENT OF INDUSTRY-LANDS.
- 4 CONSTRUCT A SURF LIFE SAVING PATROL DECK TO FULFIL THE REQUIREMENTS OF THE SURF CLUB.
- 5 IMPLEMENT IMPROVEMENTS TO FORMALISE PARKING ARRANGEMENTS IN HOFFMEIER CLOSE.
- 6 REDEFINE THE AREA OCCUPIED BY THE HOLIDAY PARK TO EXPAND THE PUBLIC DOMAIN TO RETAIN A COMMERCIALLY VIABLE OPERATIONAL AREA WHICH IS CAPABLE OF GENERATING THE FUNDS TO SUPPORT THE IMPROVEMENT AND MAINTENANCE OF THE WIDER RESERVE FOR COMMUNITY ENJOYMENT. DEFINE BOUNDARIES WITH LANDSCAPE PLANTINGS AND LOW BOLLARDS.
- 7 PROVIDE A NEW CONTEMPORARY PLAYGROUND THAT MEETS CURRENT REGULATORY REQUIREMENTS AND OFFERS FACILITIES FOR A RANGE OF AGE GROUPS. INCLUDE PROVISION OF SHADE AND SEATING FOR PARENTS AND CARERS.
- 8 REMOVE THE EXISTING DAY-USE PARKING AREA TO REDUCE THE EXTENT OF HARD SURFACE AND DEMOLISH THE EXISTING PUBLIC AMENITIES. RESTORE THE AREA AS AN INTEGRAL PART OF THE PUBLIC DOMAIN OPEN SPACE.
- 9 CONSTRUCT NEW PUBLIC AMENITIES OF A DESIGN THAT IS APPROPRIATE TO THE CHARACTER OF THE RESERVE AND TO MATCH COMMUNITY REQUIREMENTS.
- 10 DEVELOP A NEW ENTRANCE TO THE HOLIDAY PARK WITH ENTRY LAY-BY AND VISITOR PARKING WHICH COMPLIES WITH THE REQUIREMENTS OF THE REGULATIONS.
- 11 REMOVE EXISTING CHILDREN'S PLAYGROUND & REUSE SUITABLE ELEMENTS IN A MORE CONTEMPORARY PLAY AREA BEING PROVIDED AT A MORE SUITABLE LOCATION.
- 12 PROVIDE PICNIC AND BARBECUE SHELTERS IN SUITABLE LOCATIONS THROUGHOUT THE RESERVE OF A DESIGN THAT WILL COMPLEMENT THE CONTEMPORARY CHARACTER OF OTHER NEW FACILITIES.
- 13 REPLACE AND MAINTAIN THE PEDESTRIAN PATHWAYS FROM OCEAN STREET THROUGH TO THE BEACH.
- 14 RE-CONFIGURE THE EXISTING PARKING AREA TO MAKE BETTER USE OF THE SPACE AND TO MATCH THE REQUIREMENTS OF THE SURF CLUB. REDUCE THE AREA OF HARD SURFACE.
- 15 EXTEND THE BEACHFRONT PATHWAY TO LINK WITH AND EXTEND THE COASTAL WALKWAY.
- 16 MAINTAIN AND IMPROVE THE EXISTING PEDESTRIAN ACCESS FROM WHARF ST TO HOFFMEIER CLOSE. REPLACE PARK MAINTENANCE SHED WITH A MORE AESTHETICALLY PLEASING BUILDING AT THE END OF THE ECONOMIC LIFE OF THE EXISTING STRUCTURE.

**EXPLANATORY NOTE :**  
 THESE DRAWINGS ARE CONCEPT DESIGNS. FURTHER DETAILED DESIGN FOR THE PUBLIC OPEN SPACE WILL BE UNDERTAKEN AND WILL UNDERGO FURTHER COMMUNITY CONSULTATION PRIOR TO CONSTRUCTION.

**KEY :**

<span style="display: inline-block; width: 15px; height: 15px; background-color: #e91e63; border: 1px solid black;"></span> BUILDINGS	<span style="display: inline-block; width: 15px; height: 15px; background-color: #bdbdbd; border: 1px solid black;"></span> HARD SURFACE
<span style="display: inline-block; width: 15px; height: 15px; background-color: #e0e0e0; border: 1px solid black;"></span> FITNESS PODS	<span style="display: inline-block; width: 15px; height: 15px; background-color: #ffe0b2; border: 1px solid black;"></span> PATHWAYS





# Appendix B

**WOOLGOOLGA BEACH  
RESERVE COMMUNITY  
CONSULTATION SUMMARY**



Woolgoolga Beach Reserve – Community engagement

Issues consolidation report

1,153 dots used

1,019 on images

134 on comments

1 Issue support (dots) – by poster category

	18 May	19 May	Total / top 10	
<b>Celebrating our local culture</b>				<b>201</b>
Public artwork (incl artwork and historic objects / local heritage)	5	39	44	
Flexible open lawns for activities	8	30	38	
Flexible civic space for events	11	36	47	
Interpretive and interactive signage	6	16	24	
Marine Rescue & SLSC	1	4	5	
Curry Fest	1	12	13	
Markets	1	15	16	
Surf school	2	12	14	
<b>Beachside plaza</b>				<b>182</b>
Tree planting for shade	4	31	35	
Places to sit / gather	6	26	32	
Lawns for park events	11	10	21	
Large shade structures	1	17	18	
Temporary plaza activities (Curry Fest image)	2	4	6	
Groundplane artwork		1	1	
Iconic shade structures		8	8	
Beachfront activation	4	8	12	
Night-time activation opportunity	11	26	37	
Signage & wayfinding	3	9	12	
<b>The natural environment</b>				<b>181</b>
Pedestrian path set back from the edge	6	27	33	
Large shade trees (incl image 4)	4	41	45	
Shade on the beach edge	1	24	25	
Hard edge to beach	4	7	11	
Soft edge to beach (incl image 5)	4	30	34	
Norfolk pines (image 1)	1	20	21	
Tuckeroo on shop-side footpath (image 2)		1	1	
Natural vegetation (image 3)	1	10	11	

<b>Accessibility for all</b>				<b>190</b>
Upgraded path networks	7	34	41	
Access for all	6	26	32	
Ramp access to the beach	4	22	26	
Lighting along pathways	5	10	15	
Signage and wayfinding	1	3	4	
Connective foreshore park, headland and Solitary Islands Walk	17	51	68	
Lack of visual connection	2	1	3	
Steep non-conforming ramp	1		1	
<b>Park infrastructure</b>				<b>139</b>
Bike parking & repair stations	4	3	7	
Public bike hire	1	1	2	
Unique furniture		2	2	
Lighting	10	11	21	
BBQ & picnic facilities	10	13	23	
Flexible furniture		3	3	
Shade structures	6	10	16	
Upgraded playground	14	20	34	
Exercise stations	8	16	24	
Existing Beach Reserve		9	9	
Existing playground	1	4	5	
Existing BBQ facilities	1	2	3	
<b>Public amenities</b>				<b>68</b>
Changing Places equitable facilities	1	18	19	
Cool loos		7	7	
Close to beach	1	18	19	
Lightweight and naturally ventilated	3	4	7	
Toilets with other facilities – multi use verandah		1	1	
Toilets with other facilities – Lookout / activation (pop-up kiosk)	3	5	8	
Toilets with other facilities – Amphitheatre	2		2	
Existing amenities block	1	3	4	
Is there a need for a second amenities block?		1	1	

<b>Parking close to the action</b>				<b>51</b>
Kerb and hardstand edge to parking		10	10	
Retain existing grassed area to parking		8	8	
Disabled parking	2	7	9	
Parking close to the action	4	11	15	
1. The proposed boat trailer and car parking area (opposite new SLSC)		6	6	
2. Formalising the existing car parking area off Hofmeier Close		3	3	



2 Issue support (dots) – by frequency

	18 May	19 May	Total
Connective foreshore park, headland and Solitary Islands Walk	17	51	68
Flexible civic space for events	11	36	47
Large shade trees (incl image 4)	4	41	45
Public artwork (incl artwork and historic objects / local heritage)	5	39	44
Upgraded path networks	7	34	41
Flexible open lawns for activities	8	30	38
Night-time activation opportunity	11	26	37
Tree planting for shade	4	31	35
Soft edge to beach (incl image 5)	4	30	34
Upgraded playground	14	20	34
Pedestrian path set back from the edge	6	27	33
Access for all	6	26	32
Places to sit / gather	6	26	32
Ramp access to the beach	4	22	26
Shade on the beach edge	1	24	25
Interpretive and interactive signage	6	16	24
Exercise stations	8	16	24
BBQ & picnic facilities	10	13	23
Lawns for park events	11	10	21
Lighting	10	11	21
Norfolk pines (image 1)	1	20	21
Close to beach	1	18	19
Changing Places equitable facilities	1	18	19
Large shade structures	1	17	18
Shade structures	6	10	16
Markets	1	15	16
Parking close to the action	4	11	15
Lighting along pathways	5	10	15
Surf school	2	12	14
Curry Fest	1	12	13

Beachfront activation	4	8	12
Signage & wayfinding	3	9	12
Hard edge to beach	4	7	11
Natural vegetation (image 3)	1	10	11
Kerb and hardstand edge to parking		10	10
Disabled parking	2	7	9
Existing Beach Reserve		9	9
Retain existing grassed area to parking		8	8
Toilets with other facilities – Lookout / activation (pop-up kiosk)	3	5	8
Iconic shade structures		8	8
Cool loos		7	7
Lightweight and naturally ventilated	3	4	7
Bike parking & repair stations	4	3	7
1. The proposed boat trailer and car parking area (opposite new SLSC)		6	6
Temporary plaza activities (Curry Fest image)	2	4	6
Existing playground	1	4	5
Marine Rescue & SLSC	1	4	5
Existing amenities block	1	3	4
Signage and wayfinding	1	3	4
Flexible furniture		3	3
2. Formalising the existing car parking area off Hofmeier Close		3	3
Existing BBQ facilities	1	2	3
Lack of visual connection	2	1	3
Public bike hire	1	1	2
Toilets with other facilities – Amphitheatre	2		2
Unique furniture		2	2
Steep non-conforming ramp	1		1
Groundplane artwork		1	1
Tuckeroo on shop-side footpath (image 2)		1	1
Toilets with other facilities – multi use verandah		1	1
Is there a need for a second amenities block?		1	1

## 2 Issue consolidation

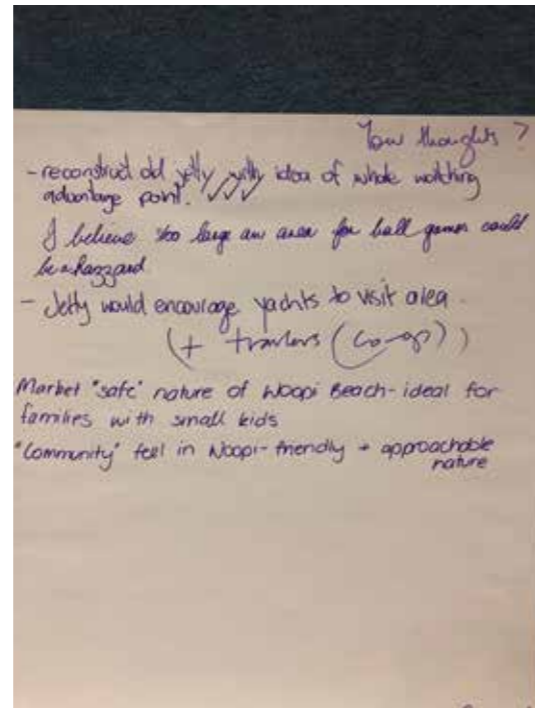
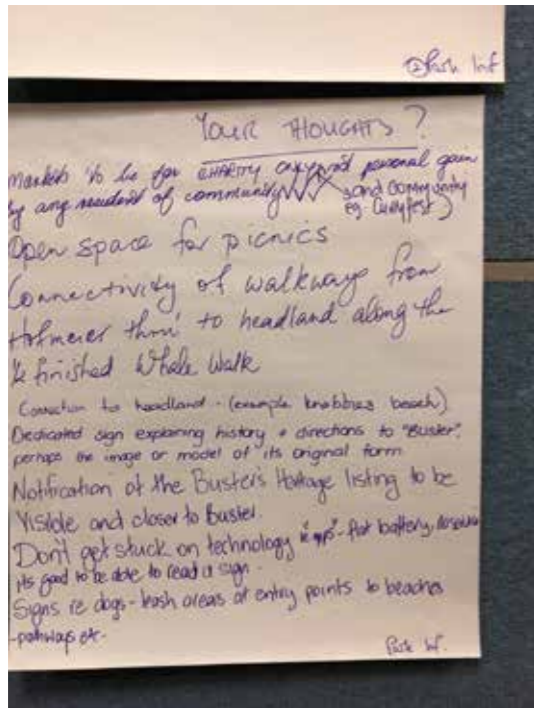
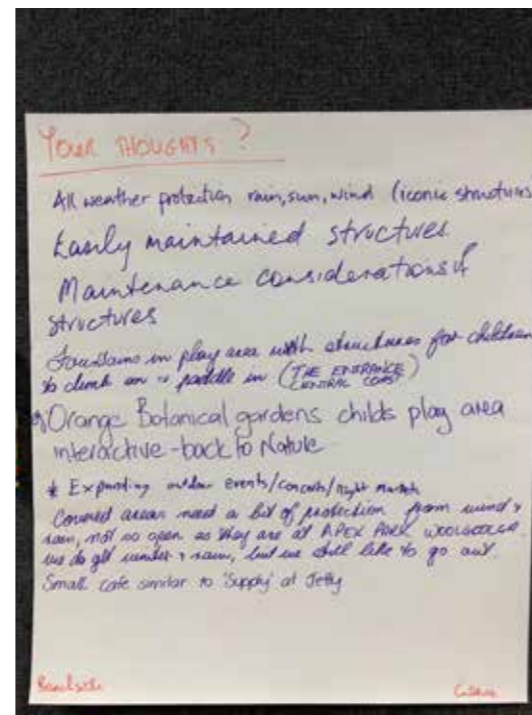
Issue	Comment
General	<ul style="list-style-type: none"> <li>• A versatile park land event area with natural shade, structures with lighting + BBQ areas</li> <li>• Do not copy Jetty model (3 dots)</li> <li>• Not like Noosa / Gold Coast</li> <li>• Market "safe" nature of Woopi Beach – ideal for families with small kids</li> <li>• "Community" feel in Woopi – friendly &amp; approachable nature</li> </ul>
No change	<ul style="list-style-type: none"> <li>• Keep our reserve as it is (4 dots)</li> <li>• Don't change it</li> <li>• Save your money and leave as is – a beautiful place already</li> </ul>
Spaces	<ul style="list-style-type: none"> <li>• Expanding outdoor events / concerts /</li> <li>• I believe too large an area for ball games could be a hazard</li> <li>• Space for open air activities (movies, concerts) (1 dot)</li> <li>• Open space for picnics</li> <li>• Bocce Italian bowling lawn/circle (Adelaide Parklands). This game invites people/teams from different states and country towns (1 dot)</li> </ul>
History	<p>Surf club</p> <ul style="list-style-type: none"> <li>• Memorial NOT Cenotaph located on old surf club site (1 dot)</li> <li>• Retain lease lot for the community after the original Surf Life Saving Building is demolished</li> <li>• Patrol deck. Can we use some timber from present clubhouse in new Patrol Deck? It would be a continuation theme.</li> <li>• Memorial for old surf club – large printed photos of old club and members (similar to convict park in Newcastle)</li> </ul> <p>Indigenous</p> <ul style="list-style-type: none"> <li>• Local heritage to include Aboriginal acknowledgement</li> <li>• Bring in the indigenous culture and their ideas (3 dots/ticks)</li> </ul> <p>Buster</p> <ul style="list-style-type: none"> <li>• Dedicated sign explaining history and directions to Buster, perhaps the image or model of its original form</li> <li>• Notification of the Buster's heritage listing to be visible closer to Buster</li> <li>• History signs – especially for Buster</li> </ul> <p>General</p> <ul style="list-style-type: none"> <li>• WW1 Memorial – rebuild and relocate in the Reserve (old surf club site). 1922 at primary school) (1 dot)</li> </ul> <p>Celebrate local families' involvement (eg Norfolk Is Pines c 1939)</p>
Trees	<ul style="list-style-type: none"> <li>• Shade – do not remove</li> <li>• Shade over playground is a must</li> <li>• Yes to shade trees</li> <li>• No to ripping out pines</li> <li>• Cease to keep planting Norfolk Isl pines. Use our indigenous trees. Why does Council want our coast to look like Norfolk Island copy</li> <li>• Indigenous peoples involvement / indigenous plantings</li> <li>• Plant poincianas (1 dot)</li> <li>• Major replant of existing species – Council nursery</li> </ul>

	<ul style="list-style-type: none"> <li>• Incorporate more pandanus pedunculatus (1 dot) and coastal prostrate banksias and big shade trees</li> <li>• Do not cut down our trees (8 dots)</li> <li>• More trees</li> </ul>
Grass	<ul style="list-style-type: none"> <li>• Some thought on how to maintain grass in a high traffic area (1 dot)</li> <li>• Keep the trees as well as the grass (1 dot)</li> <li>• Use buffalo grass for lawns (4 dots)</li> </ul>
Protection	<ul style="list-style-type: none"> <li>• Covered areas need a bit of protection from wind and rain, not so open as they are at APEX Park, Woolgoolga</li> <li>• We do get winter and rain, but we still like to go out</li> <li>• All weather protection rain, sun, wind (iconic structures)</li> <li>• Erection of windbreak in the area of the old surf club, eg trees / structure</li> <li>• Protection from southerly winds – freezing!</li> <li>• More shade and seats in shade</li> <li>• No to both shade structure images</li> <li>• Shade please</li> <li>• Integrated shade structures/trees (1 tick)</li> </ul>
Maintenance	<ul style="list-style-type: none"> <li>• Maintenance consideration of structures</li> <li>• Must be easily maintained / management</li> <li>• Easily maintained structures</li> <li>• Park infrastructure to be vandal proof and secure</li> </ul>
Markets	<ul style="list-style-type: none"> <li>• No private markets (6 dots)</li> <li>• Markets to be for charity only and community eg Curry Fest, not personal gain by any resident of community (3 ticks for that)</li> <li>• Night markets</li> <li>• Keep reserve as is. Limit use ie ONE MARKET per months, not three</li> <li>• One good one monthly saves wear and tear of grass (3 dots)</li> </ul>
Food / drink	<ul style="list-style-type: none"> <li>• Small café similar to Supply at Jetty</li> <li>• Small coffee/drink station near playground / beaches</li> <li>• Like look of pop-up kiosk etc but not keen on more retail</li> </ul>
Attractions	<ul style="list-style-type: none"> <li>• Visitor information centre – make it easy to find (1 dot)</li> <li>• Reconstruct old jetty with idea of whale watching advantage point (3 ticks)</li> <li>• Jetty would encourage yachts to visit the area – and trawlers (co-ops)</li> <li>• Viewing points</li> <li>• Viewing platforms – more lightweight / natural</li> </ul>
Dogs	<ul style="list-style-type: none"> <li>• 90% of beach now off leash for dogs. No more off leash. Too many dog attacks happening. Main beach should be dog free. Larger signs to inform of NO DOGS ALLOWED area. Society being terrorised by dogs. (9 dots supporting this)</li> <li>• Clearer signage for No Dog areas, &amp; on leash areas, plus police the regulation</li> <li>• Keep beach dog lead free – no lead required</li> <li>• Include a fenced off-leash dog park</li> <li>• Signs re dogs leash areas at entry points to beaches, pathways etc</li> </ul>

	<ul style="list-style-type: none"> <li>• More bins/bags for dog poo</li> </ul>
Beach edge	<ul style="list-style-type: none"> <li>• Protect the foreshore edge / management</li> <li>• Yes to a hard edge beach but I am not keen on this particular structure</li> <li>• Erosion is a big issue</li> <li>• Look at Merewether Beach, Newcastle beaches – great mixed use of hard / soft edges with neutral materials in raw concrete &amp; solid, large scaled hardwood benches etc</li> <li>• Must consider rock wall to hold dune and stop erosion. Otherwise in 20 yrs your efforts will be in vain (1 dot)</li> <li>• Soft edge but with trees and pathway (bikes)</li> <li>• Keep a natural beachfront – natural vegetation – no concrete or rock walls</li> <li>• Consider erosion from the sea</li> </ul>
Connective foreshore	<ul style="list-style-type: none"> <li>• Board walk main beach, with seating and exercise equipment (6 dots)</li> <li>• Path all the way from the headland (2 dots)</li> <li>• Boardwalk will also attract walker, bike riding &amp; running zone</li> <li>• Cycleways to be all inclusive, not just for adults – with children – as in cycle way at Jetty Foreshore</li> <li>• Need safe network of paths to connect to cycleway to lake</li> <li>• We don't need lots of paved paths</li> <li>• Formal boardwalk from lake along beach, up and around headland</li> <li>• Connectivity of walkways from Hofmeier thru' to headland along the half finished Whale Walk</li> <li>• Connection to headland (example Knobbies Beach)</li> <li>• Pollack Esp board walk link between lawns (3 dots)</li> <li>• Corner link off Pollack into Carrington – too narrow</li> <li>• Cantilever boardwalk path?</li> <li>• Link Lake Road access for safety and connectivity ie cycle path/walkway</li> </ul>
Signage / wayfinding	<ul style="list-style-type: none"> <li>• Don't get stuck on technology it "opps" – flat battery, no service</li> <li>• It's good to be able to read a sign (hi-tech issues)</li> </ul>
Rock pool	<ul style="list-style-type: none"> <li>• Ocean bath at southern corner of Woolgoolga Main Beach (2 dots)</li> <li>• Southern corner – bad rip</li> <li>• Tidal pool at Second Beach (1 dot)</li> <li>• Rock pool (1 dot)</li> <li>• Rock pool on the beach (3 dots)</li> </ul>
Playground	<ul style="list-style-type: none"> <li>• Shaded playground!! (2 dots)</li> <li>• Decent shade at playground</li> <li>• Big hamster wheel</li> <li>• Child safety – moving playground and toilets next to Beach St is a Big No!</li> <li>• Orange Botanical Gardens child's play area interactive – back to nature</li> <li>• Equipment for all ages –0 – 18 years – not enough facilities here for older kids</li> <li>• Fountains in play area with structures for children to climb on &amp; paddle in (The Entrance, Central Coast)</li> </ul>
Toilets	<ul style="list-style-type: none"> <li>• Yes, a need for second toilet block</li> <li>• Amenity block to be user friendly, safe for all to use anytime of the day</li> <li>• A "safe" style building in design amenity</li> </ul>

	<ul style="list-style-type: none"> <li>• Of the 7 images for Cool loos, 4 dots for image 1 / 3 for image 3</li> <li>• Toilets to be nearer to the beach (1 dot)</li> <li>• Incorporate toilets (public) into surf club plan to free up space (1 dot)</li> <li>• Keep public amenities close to beach</li> <li>• Disability toilet to small access area</li> <li>• Crescent Head has a stylish new amenities block with locking shower cubicles. Trouble is there are no external showers when the internal showers are in use. Surfers miss out</li> <li>• Bonnieville camp area Sydney has an excellent design amenities block that discourages antisocial behaviour as it has minimal (but enough) privacy</li> <li>• 24hr access for toilets/showers</li> <li>• The surf club building should include public toilets (5 dots)</li> <li>• Automated toilet locking system</li> <li>• Do not put toilets near beach (1 dot)</li> <li>• Put toilets next to surf club (16 dots)</li> </ul>
Showers	<ul style="list-style-type: none"> <li>• If there were pay hot showers inside this might be a fund raiser</li> <li>• Very necessary to retain internal showers</li> <li>• Showers built over pits to capture sand</li> </ul>
Beach facilities	<ul style="list-style-type: none"> <li>• Safe locker facilities for beach goers to store valuable wile swimming</li> <li>• Boat wash area</li> <li>• Fish cleaning table relocated t Arrawarra (3 dots)</li> <li>• Dog water bowls and tie-up points</li> <li>• Hire bike idea would end up being an eyesore</li> </ul>
Exercise	<ul style="list-style-type: none"> <li>• Exercise station – great idea</li> <li>• Exercise station to cater for elderly</li> </ul>
Sculptures	<ul style="list-style-type: none"> <li>• No sculptures or art work – (load of shite) – put \$ into kerb, guttering, footpaths and loo (3 dots in support)</li> <li>• No sculptures</li> </ul>
Garbage / rubbish	<ul style="list-style-type: none"> <li>• Boundary waste retention fence – north east</li> <li>• Garbage bins</li> </ul>
Drainage	<ul style="list-style-type: none"> <li>• Redrain area in north west (current Marine Rescue)</li> <li>• Consider current drainage pattern, conflicting with the development occurring on the ridge (2 ticks for this)</li> </ul>
Access	<ul style="list-style-type: none"> <li>• Wheelchair access for both ends of ramp close</li> <li>• Put in one suitable ramp (to beach)</li> </ul>
Facilities	<ul style="list-style-type: none"> <li>• Ensure facilities for families to enjoy area eg BBQs + playground</li> <li>• BBQs and open seating tables</li> <li>• Ample beach access and walking pathways</li> <li>• Battery recharge points for wheelchairs</li> </ul>
Parking / traffic	<ul style="list-style-type: none"> <li>• Hofmeier Close should be better utilised to integrate fisho's and general public needing access to the beach. Take stress off surf club boat ramp. Potential conflict between children and vehicles. Congestion will be HUGE. Could utilise existing</li> </ul>

	<p>surf club ramp to meet this need.</p> <ul style="list-style-type: none"> <li>• More parking in Hofmeier Close</li> <li>• Safe parking for young Mothers!</li> <li>• Too much parking close to action will or may cut down on leisure area</li> <li>• Consider placement of parking</li> <li>• Leave parking in town alone (Beach Street and Market Street) (3 dots)</li> <li>• Consider the impact of larger vans and bigger vehicles turning into Wharf Street into caravan park</li> <li>• More parking (1 dot)</li> <li>• Don't take parking for bike rank – put it over the road at swimming pool</li> <li>• With upgrade – more visitors – not enough parking – maybe new car park in front of pool area (1 dot)</li> <li>• Keep parking numbers as is</li> <li>• Keep parking facilities for local fishermen &amp; trailers. It's only going to get more popular and Arrawarra is already at capacity (1 dot)</li> <li>• Some long vehicle &gt;6m caravan day parking sports as per Crescent Head (1 dot)</li> <li>• Keep all existing parking close to Reserve</li> <li>• Parking around the new surf club needs to take into account boat trailer parking (3 dots)</li> <li>• Boat trailer parking (not indicated)</li> <li>• There will not be enough parking when area is enhanced for increased patronage</li> <li>• Roundabout needed at Beach &amp; Carrington Street intersection to ease future traffic congestion (2 dots)</li> </ul>
Lighting	<ul style="list-style-type: none"> <li>• Integrated lighting (Jetty Foreshores)</li> <li>• Keep lights on</li> </ul>
New surf club / access / toilets / restaurant / viewing	<ul style="list-style-type: none"> <li>• Don't build surf club – keep the grass</li> <li>• New surf club with bar and restaurant to enjoy ocean views (none available currently). This set-up will allow loads of parking necessary &amp; open parkland/beach reserve area for BBQ, playground &amp; entertainment.</li> <li>• Surf club is built with public money &amp; on leased land. So all public should be able to enjoy the position not just lifesavers. Put in a restaurant</li> <li>• Should be new surf club with restaurant upstairs, like the Gold Coast. Family friendly, and then self funding (5 dots)</li> <li>• Café and views to beach @ surf club (1 dot)</li> <li>• Restaurant on surf club</li> <li>• Surf club restaurant</li> <li>• Develop the surf club to have a bar and restaurant overlooking beach</li> <li>• Restaurant on top of surf club with bar (1 dot)</li> <li>• Balcony for alfresco dining – surf club lookout – needs cover – locals meeting place</li> <li>• Café/restaurant on life saving club (1 dot)</li> <li>• A lovely rooftop bar overlooking ocean (3 dots)</li> <li>• Club DA needs to be on the plans</li> <li>• No commercial enterprise in surf club – allow free enterprise to survive/thrive (4 dots)</li> </ul>
Caravan park	<ul style="list-style-type: none"> <li>• Don't build cabins on old site of surf club. Retain lease and use for public purpose – not caravan park use (4 dots)</li> <li>• Move caravan park around to Wharf Street</li> <li>• Move caravan park to the lake, expand that one, and have a boardwalk along the beach to the existing caravan park/Beach Reserve area</li> </ul>





**Accessibility for all**  
testing and refining

**What is important to you?**  
Vote with your dots

Access for all

Ramp access to the beach

Lighting along pathways

Signage & Wayfinding

Connecting Foreshore Park, Headland and Solitary Islands Walk

**Your thoughts?**

wheel chair access both ends of ramp  
more parking in Bluff area  
too much parking close to action will bring  
all down on leisure area ✓  
Consider placement of parking  
Consider erosion from the sea  
formal boardwalk from lake along beach, up +  
around headland viewing points, history signs (esp. for  
Buster) + more bins/bags for dog poo etc.  
Memorial for old surf club - large printed photos with photos  
of old club + members (similar to Convict Park, Newcastle)

Access + Parking

**Your thoughts?**

wheel chair access both ends of ramp  
more parking in Bluff area  
too much parking close to action will bring  
all down on leisure area ✓  
Consider placement of parking  
Consider erosion from the sea  
formal boardwalk from lake along beach, up +  
around headland viewing points, history signs (esp. for  
Buster) + more bins/bags for dog poo etc.  
Memorial for old surf club - large printed photos with photos  
of old club + members (similar to Convict Park, Newcastle)

Access + Parking

**ERECTION OF A WINDBREAK IN THE  
AREA OF THE OLD SURF CLUB.**  
eg. Trees/structure  
Protection from southerly winds  
freezing!

**Existing parking**  
We are seeking feedback about:  
1. The proposed boat trailer and car parking area (opposite the new SLSC).  
2. Formalising the existing parking area off Hofmeister Close.  
3. Disabled parking.

**What is important to you?**  
Vote with your dots

Kerb and hardstand edge to parking

Retain existing grassed edge to parking

Disabled parking

Parking close to the action

for toilets  
Centre  
amenities -  
ces

**Requirements**  
visibility of  
uitable access  
g Places  
es facilities  
ile toilets for  
innot use  
isible toilets.

**What is important to you?**  
Vote with your dots

Existing amenities block

A Changing Places toilet allows people with high support needs to enjoy the day to day activities many of us take for granted.

**What is important to you?**  
Vote with your dots

Changing Places equitable facilities

Changing Places  
Transforming Lives

testing and refining

**What is important to you?**  
Vote with your dots

Close to the beach

Lightweight and naturally ventilated

Toilet with other facilities?

**Your thoughts?**

like look of Pop-up Kiosk etc but not Ken  
on more retail.  
yes a roof for sand toilet block ✓  
A safe style building in design amenity.  
Child Safe Housing Plus ground - toilets next to Beach etc.  
Amenity Block to be user friendly, safe for  
all to use at anytime of the day  
Safe locker facilities for beach goers to store  
valuables while swimming

**Vegetation**  
Mapping of native vegetation and the relatively small area, it still supports a range of significant vegetation. Ongoing management of the Reserve must be preservation and maintenance of station communities.

**Ecological processes**  
The Reserve's location requires an approach to managing the impacts of hazards, that include:  
- Flooding of low lying land.  
- Hazards.  
- Change, including sea level rise and increased rainfall intensity.

**Vegetation mapping**

**Ecological strategies**  
- Enhance an existing Norfolk Island Pine.  
- Add more street tree-planting.  
- Attract coastal species.  
- Provide shade by using large canopy sand trees.  
- Remove and re-vegetate eroding eroded dunes in the coastal foreshore.

**The natural environment**  
testing and refining

**What is important to you?**  
Vote with your dots

Questions to consider -

- How do we protect the foreshore?
- How do we enhance the existing Reserve's character?
- How do we plan for the future?
- Do we want more native vegetation within the Reserve?
- Do we need more shade trees in the Reserve?
- How do we deal with drainage and rain/storm events?

Pedestrian path set back from the edge

Large shade trees

Shade on the beach edge

Hard edge to beach

Soft edge to beach

Your thoughts P

- must be easily maintained (mgt)
- not like North / Gold Coast
- protect the foreshore edge (mgt)
- Major Report of Existing Specimen Council Nursing
- Boundary Waste Retention Facility etc
- Redesign Area NW Council Main Road

① yes to a hard edge to beach but I am not  
 ② keep on this particular structure  
 ③ yes to shade vias  
 ④ no to ripping out fences

Develop the beach club to be a bar + restaurant overlooking beach

- MOVE CARPARK BACK TO THE LAKE, EXTEND TROTTOIR + HAVE A BOARDWALK ALONG THE BEACH TO THE EXISTING CARPARK (BEACH RECREATION, NEW GOLF CLUB WITH BAR + RESTAURANT TO ENJOY SCENIC VIEWS (FROM AVAILABLE CURRENTLY))
- THIS SET UP WILL ALLOW LOADS OF BIKERS + MOTORBIKES + OTHER MOTORISTS/BIKERS TO ENJOY THE BEACH + SURROUNDING AREAS (BEACH RECREATION, NEW GOLF CLUB)
- RESERVE AREA FOR BIKERS + MOTORBIKES + OTHER MOTORISTS/BIKERS TO ENJOY THE BEACH + SURROUNDING AREAS (BEACH RECREATION, NEW GOLF CLUB)

- Consider current drainage pattern, conflict with the development occurring on the ridge

① yes to a hard edge to beach but I am not  
 ② keep on this particular structure  
 ③ yes to shade vias  
 ④ no to ripping out fences

Develop the beach club to be a bar + restaurant overlooking beach

- MOVE CARPARK BACK TO THE LAKE, EXTEND TROTTOIR + HAVE A BOARDWALK ALONG THE BEACH TO THE EXISTING CARPARK (BEACH RECREATION, NEW GOLF CLUB WITH BAR + RESTAURANT TO ENJOY SCENIC VIEWS (FROM AVAILABLE CURRENTLY))
- THIS SET UP WILL ALLOW LOADS OF BIKERS + MOTORBIKES + OTHER MOTORISTS/BIKERS TO ENJOY THE BEACH + SURROUNDING AREAS (BEACH RECREATION, NEW GOLF CLUB)
- RESERVE AREA FOR BIKERS + MOTORBIKES + OTHER MOTORISTS/BIKERS TO ENJOY THE BEACH + SURROUNDING AREAS (BEACH RECREATION, NEW GOLF CLUB)

- Consider current drainage pattern, conflict with the development occurring on the ridge

Your thoughts ?

Erosion is a big issue ✓

- look @ Moreeville, Newcastle beaches. Great mixed use of hard / soft edges with natural materials ie sand concrete + solid, large scaled hardwood benches etc

Re co

**and refining**

**oolga Beach Reserve**

oolga has a unique heritage, and any new developments need to be sensitive to the existing character of the town. We provide a range of facilities that support the beach and the town. We provide a public space that facilitates a range of community events, site management and maintenance of the facilities. It is essential for the site, and for tourists, to contribute to the local economy.

**Artwork and historic artefacts**

**Marine Reserve & SLS**

**Curry Feed**

**Markets**

**Surf School**

**Local Heritage**

**What is important to you?**

Vote with your dots

**Public artwork**

How do we express and interpret our town's unique history? Can we re-purpose the materials of the existing surf life saving club in some manner? Do we need a designated off-leash dog park area?

**WoolgoolgaWOW**

Woodgoolga Beach Reserve

**HAVE YOUR SAY**

To submit your feedback online, please visit Council's community engagement web page: [woolgoolga.coffs Harbour.nsw.gov.au](http://woolgoolga.coffs Harbour.nsw.gov.au)

**Testing and refining**

**What is important to you?**

Vote with your dots

**Flexible open spaces for activities**

**Flexible club space for events**

**Heritage interpretation signage**

**YOUR THOUGHTS?**

40% of beach users off leash for dogs. No more off leash. Too many dog attacks happening. Main beach should be dog free. Larger dog park. Return of the dog reserved area. Sandy. Terraced by dogs.

Cleaner signage for No Dog areas, + on leash areas plus police the regulation!

No sculptural art work - lead of site - put \$ into kerbs, gutters, footpaths + etc.

Keep Beach dog free zone - no lead required

Memorial NOT Cenotaph located on old surf club site.

Local Heritage to include Aboriginal Acknowledgment.

Include a fenced off-leash dog park.

**WoolgoolgaWOW**

Woodgoolga Beach Reserve

**HAVE YOUR SAY**

To submit your feedback online, please visit Council's community engagement web page: [woolgoolga.coffs Harbour.nsw.gov.au](http://woolgoolga.coffs Harbour.nsw.gov.au)

**YOUR THOUGHTS?**

Patrol Deck. Can we use some timber from present clubhouse in new Patrol Deck? - It would be a 'continuation' theme.

- NAI Memorial - rebuild + locate in the Reserve (2000 sqm) (old surf club site) - celebrate local families' involvement (eg. NAI 11/199)

**WHEN?**

Surf Club is built with public money + on leased land. So all public should be able to enjoy the patrol deck with lifeguards. Put in a patrol deck.

Don't build cabins on old site of surf club. Retain large and use for public purpose - NOT CARAVAN PARK USE.

**Your thoughts?**

**YOUR THOUGHTS?**

Patrol Deck. Can we use some timber from present clubhouse in new Patrol Deck? - It would be a 'continuation' theme.

- NAI Memorial - rebuild + locate in the Reserve (2000 sqm) (old surf club site) - celebrate local families' involvement (eg. NAI 11/199)

**WHEN?**

Surf Club is built with public money + on leased land. So all public should be able to enjoy the patrol deck with lifeguards. Put in a patrol deck.

Don't build cabins on old site of surf club. Retain large and use for public purpose - NOT CARAVAN PARK USE.

**Your thoughts?**

**YOUR THOUGHTS?**

CLUBS TO BE ALL DISCLOSED ON MAP OUT FOR MONTHS - WITH COLOURS - NO ON SHOW MAP AT CITY PURPOSE

\* A WALK ROUTE FOR THE BEACH AND OCEAN !!!

CLUBS TO - Needs to be in the plans -

SHOULD BE NEW SURF CLUBS WITH RESTAURANTS WORKING LIKE THE GOLD COAST FAMILY FRIENDLY - PUT IN THE PLANS

NO CONSTRUCTION SIGNAGE TO NEW CLUB - ALLOW FROM SIGNAGE TO CONSTRUCTION!

MOVE NEW MARINA PARK AROUND TO HALF ST RESTAURANT ON TOP OF SURF CLUBS. WITH BIG BALCONY FOR ALFRESCO DINING.

Life (retail) - shopping club - put in the plans

Place (retail) - shopping club - put in the plans

CAPE - VISITS TO SURF CLUBS

Evening markets for families to enjoy on a beachside - put in the plans

No Sculptures

**Your thoughts?**

**What is important to you?**

Vote with your dots

**Tree planting for shade**

**Places to sit / gather**

**YOUR THOUGHTS?**

Board walk main beach. With seating and exercise equipment.

Path all the way from the headland.

More parking.

Shower built over pits - to capture sand

Shade - Do not remove! Shade over play ground is a must!

**WoolgoolgaWOW**

Woodgoolga Beach Reserve

**HAVE YOUR SAY**

To submit your feedback online, please visit Council's community engagement web page: [woolgoolga.coffs Harbour.nsw.gov.au](http://woolgoolga.coffs Harbour.nsw.gov.au)

**What is important to you?**

Vote with your dots

**Lawns for park events**

**Large shade structure**

**Temporary plaza activation**

**Landscaping artwork**

**Some shade structures**

**Beachfront activation**

**High rise activation opportunity**

**Signage & Wayfinding**

**YOUR THOUGHTS?**

Board walk main beach. With seating and exercise equipment.

Path all the way from the headland.

More parking.

Shower built over pits - to capture sand

Shade - Do not remove! Shade over play ground is a must!

**WoolgoolgaWOW**

Woodgoolga Beach Reserve

**HAVE YOUR SAY**

To submit your feedback online, please visit Council's community engagement web page: [woolgoolga.coffs Harbour.nsw.gov.au](http://woolgoolga.coffs Harbour.nsw.gov.au)

**YOUR THOUGHTS?**

Board walk main beach. With seating and exercise equipment.

Path all the way from the headland.

More parking.

Shower built over pits - to capture sand

Shade - Do not remove! Shade over play ground is a must!

**WoolgoolgaWOW**

Woodgoolga Beach Reserve

**HAVE YOUR SAY**

To submit your feedback online, please visit Council's community engagement web page: [woolgoolga.coffs Harbour.nsw.gov.au](http://woolgoolga.coffs Harbour.nsw.gov.au)

**YOUR THOUGHTS?**

A WALKWAY PARK LAND ACTIVATOR WITH NATURAL SHADE STRUCTURES WITH LOCATION + BBQ MOODS AND GARBAGE BINS

RESTED INFORMATION CENTRE (MUSIC) ART TO FIND

SPACE FOR OPEN AIR ACTIVITIES (MUSIC, CONCERTS)

KEEP OUR RESERVE AS IT IS

DO NOT PUT TENTS WITH BEACH

**WHEN?**

- Beach station / Bowling lawn/circle (Addside Parklands) and Country tours

This zone invites people/teams from different states

Come to keep playing (to be the best) the only indigenous beach

Indigenous people's movement plantings

plant paintings

**BEACH FLAG**

**YOUR THOUGHTS?**

level rise and stability.

1

2

3

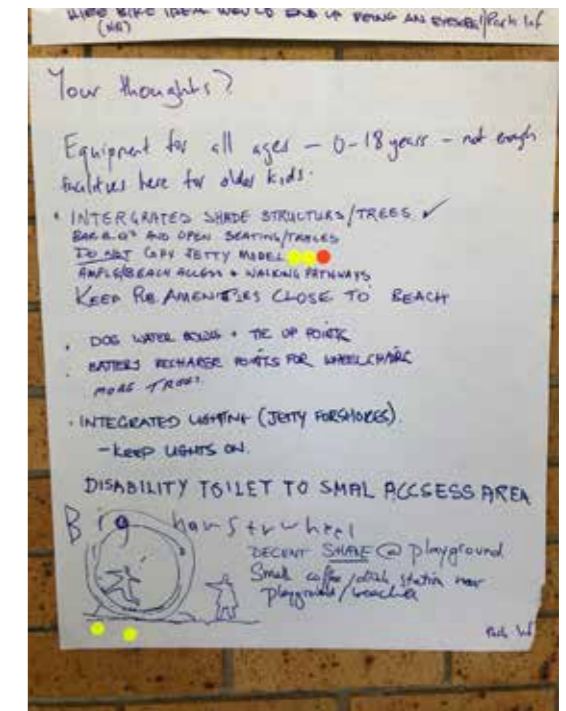
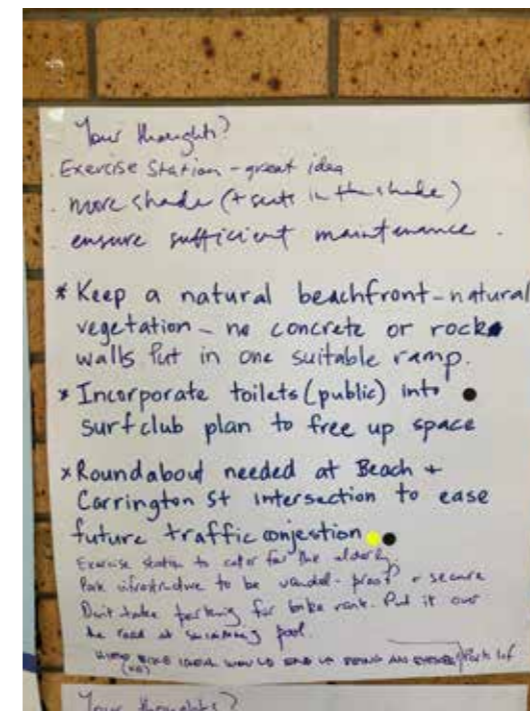
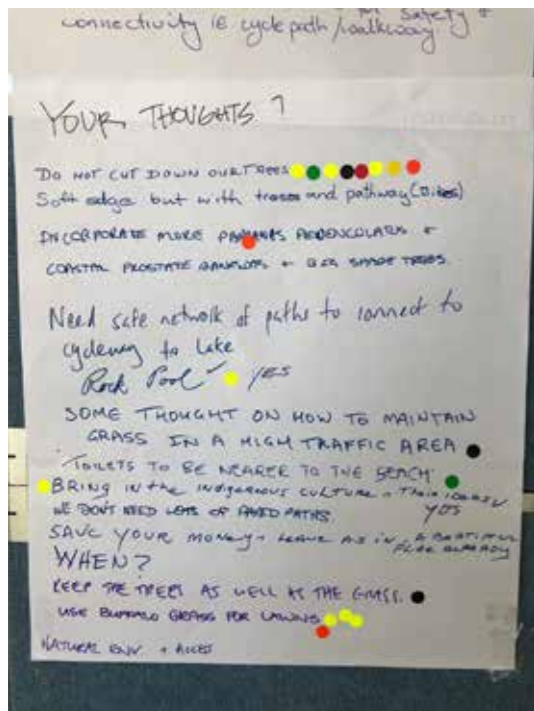
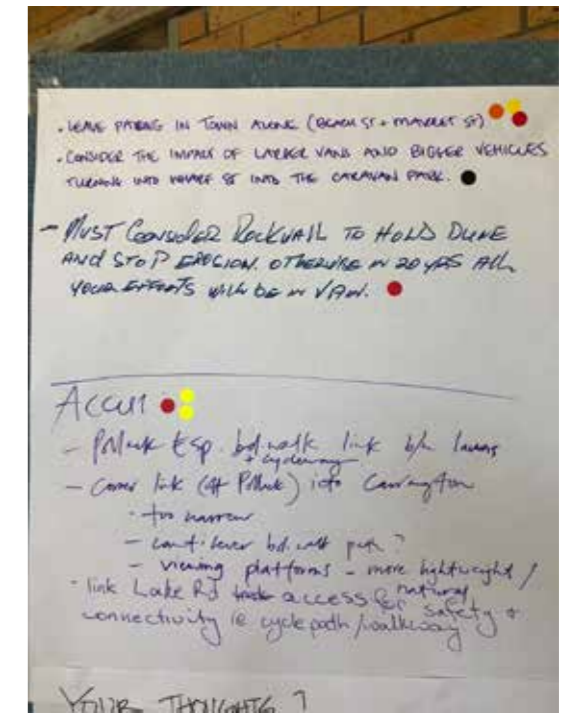
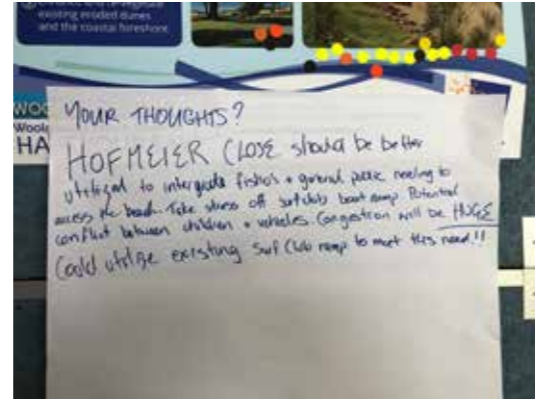
4

5

**YOUR THOUGHTS?**

LEVELER (LOSE) should be better

leveler fabric + ground water, meeting to



**Public amenities**

- New location for toilets (as per Town Centre Masterplan)
- Disability amenities - changing places

**Key requirements**

- Maximise the visibility of the facility
- Optimise equitable access to the facility

**Changing Places**

Changing Places facilities provide suitable toilets for people who cannot use standard accessible toilets.

A Changing Places toilet allows people with high support needs to enjoy the day to day activities many of us take for granted.

**What is important to you?**  
Vote with your dots

**Options to consider?**

- Should we provide changing places facilities?
- Is there a need for a second amenities block?
- Should these structures reflect Woolgoolga's unique character?
- Should it have more users than just a toilet block?

**Woolgoolga WOW**  
HAVE YOUR SAY

**Public amenities**  
testing and refining

**What is important to you?**  
Vote with your dots

**Cool toos**

**Close to the beach**

**Lightweight and naturally ventilated**

**Toilets with other facilities**

**Woolgoolga WOW**  
HAVE YOUR SAY

**Parking close to the action**  
testing and refining

**Existing parking**

We are seeking feedback about:

- The proposed boat trailer and car parking area (opposite the new SCS)
- Formalising the existing parking area off Harbour Coast
- Disabled parking

**What is important to you?**  
Vote with your dots

**Keels and handover edge to parking**

**Retain existing grassed edge to parking**

**Disabled parking**

**Parking close to the action**

**Woolgoolga WOW**  
HAVE YOUR SAY

Your thoughts?  
With upgrade - more visitors - not enough parking - maybe in front pool area - new car park!

Keep parking #1 as is

Keep existing facilities for local fishermen & trailers. Its only going to get more popular & area where is already at capacity.

- Some long vehicle 70m/80m long day parking spots as per current plans
- Current plans has a stretch with amenities block with parking. Current customer numbers will be 2-3
- Is there more PM but ensure there isn't a punch raise
- Somehow can add more but an emergency amenities block that handles any social because as it has minimal (but minimal) privacy
- Keep all existing parking close to reserve
- 24 HR ACCESS FOR TOILETS/SHOWERS
- Very necessary to retain internal showers

Your thoughts?  
- [unclear]

Keep parking #1 as is

Keep existing facilities for local fishermen & trailers. Its only going to get more popular & area where is already at capacity.

- Some long vehicle 70m/80m long day parking spots as per current plans
- Current plans has a stretch with amenities block with parking. Current customer numbers will be 2-3
- Is there more PM but ensure there isn't a punch raise
- Somehow can add more but an emergency amenities block that handles any social because as it has minimal (but minimal) privacy
- Keep all existing parking close to reserve
- 24 HR ACCESS FOR TOILETS/SHOWERS
- Very necessary to retain internal showers

**Your thoughts?**

- SHADED PLAYGROUND !!
- The Surf Club building should include public toilets
- Parking around the new Surf Club needs to take into account boat trailer parking
- BOAT WASH AREA
- PSA CLEANING TANK RELOC. & AMENITIES
- BOAT TRAILER PARKING (NOT INDICATED)
- THERE WILL NOT BE ENOUGH PARKING WHEN AREA IS DRAINAGE FOR RELEASED ANTENNAE
- ROCK POOL ON THE ROCK
- KEEP HIGH OR IS LIGHT USE. I.E. ONE MARKET PER MONTH NOT THREE!
- NO PRIVATE MARKETS ONE GOES ONE MONTHLY SALES WEEK + YEAR OF GASE
- DON'T SUPPORT 'HOMESIDE' BUILDING FOR SURF CLUB - KEEP THE GRASS
- DON'T CHANGE IT
- AUTOMATED TOILET LOCKING SYSTEM WHEN?

**Your thoughts?**

- SHADED PLAYGROUND !!
- The Surf Club building should include public toilets
- Parking around the new Surf Club needs to take into account boat trailer parking
- BOAT WASH AREA
- PSA CLEANING TANK RELOC. & AMENITIES
- BOAT TRAILER PARKING (NOT INDICATED)
- THERE WILL NOT BE ENOUGH PARKING WHEN AREA IS DRAINAGE FOR RELEASED ANTENNAE
- ROCK POOL ON THE ROCK
- KEEP HIGH OR IS LIGHT USE. I.E. ONE MARKET PER MONTH NOT THREE!
- NO PRIVATE MARKETS ONE GOES ONE MONTHLY SALES WEEK + YEAR OF GASE
- DON'T SUPPORT 'HOMESIDE' BUILDING FOR SURF CLUB - KEEP THE GRASS
- DON'T CHANGE IT
- AUTOMATED TOILET LOCKING SYSTEM WHEN?

A wide-angle photograph of a beach at sunset. The sun is low on the horizon, casting a bright orange glow across the sky and reflecting on the water. The sky is filled with soft, wispy clouds. In the foreground, several pieces of dark driftwood are scattered across the sandy beach. The overall mood is serene and peaceful.

# Appendix C

---

**NSW NPWS  
BUSTER & PIER TIMBERS**



*Buster piece 1*



*Buster piece 2*



*Buster piece 3a*



*Buster piece 3b*

Approximate size and dimensions:

"Buster" piece 1: length 3.7 m approx. 300mm

"Buster" piece 2: length 2.9m approx. 300mm

"Buster" piece 3: 2 pieces of timber joined together by metal spikes approx. 1m wide, 250mm deep and 1.5 m long.



*Woopi pier piece 1*



*Woopi pier piece 2*

Approximate size and dimensions:

Woolgoolga Pier piece 1: length 4.5m diameter 550mm

Woolgoolga Pier Piece 2 : length 3.2m diameter 450mm



Level 5, 300 Ann Street, Brisbane QLD 4000  
PO Box 10954, Brisbane Adelaide Street QLD 4000

**07 3236 1086**  
info@lat27.com.au

© COPYRIGHT LAT27 PTY LTD ALL RIGHTS RESERVED.