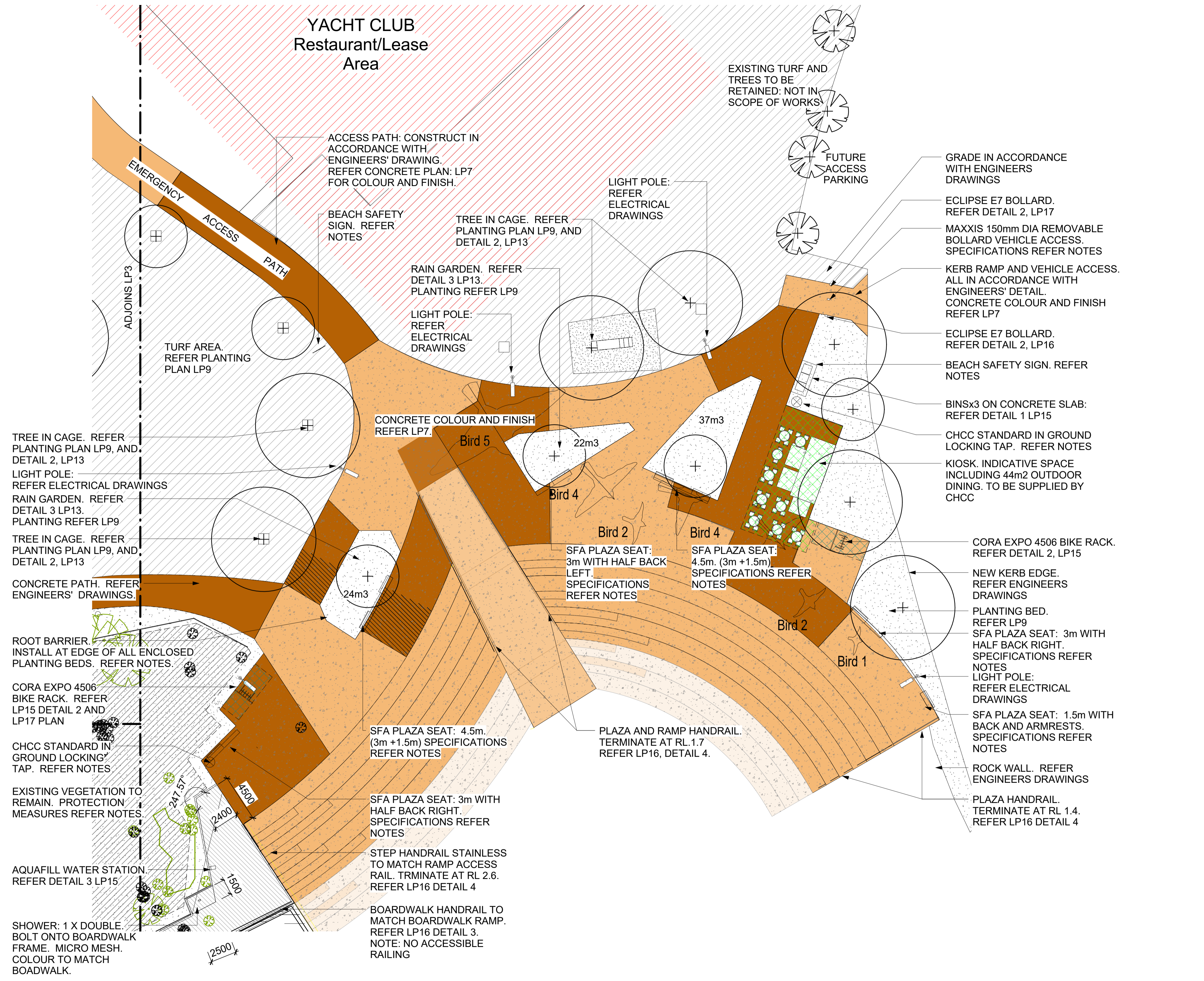


**LEGEND**

- BOLLARD: OSA E7
- TREE IN GRASS
- TREE PLANTING
- HOSECOCK
- BEACH SAFETY SIGN
- GARDEN BED
- TURF
- COLORMIX FULL DEPTH SANDSTONE BROOMED FINISH
- COLORMIX FULL DEPTH SPICE BROOMED FINISH
- COLORMIX FULL DEPTH SANDSTONE GRAFTON GRANITE AGGREGATE MINIMUM 7mm DIAMETER
- COLORMIX FULL DEPTH SPICE GRAFTON GRANITE AGGREGATE MINIMUM 7mm DIAMETER  
NOTE: ALL CONCRETE HOLCIM CONCRETE MIX. REFER NOTES
- BOARDWALK: WCFT. REFER ENGINEERING DRAWINGS
- LIGHT: REFER ELECTRICAL DRAWINGS
- MOWING EDGE
- SFA ARC SEAT HALF BACK
- SFA ARC SEAT 1.5M LONG FULL BACK
- KIOSK OUTDOOR DINING AREA
- BIKE RACK SPACE

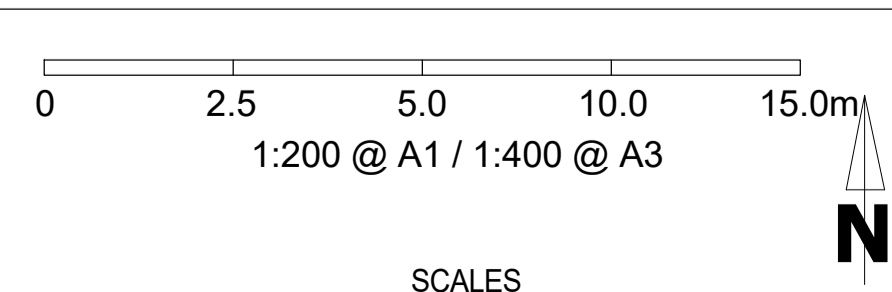


**1 PLAZA PLAN**  
1 : 200

Q:\Ssm\Design\ENGLANDSCAPE PLANS\chcc\rev\road template famil\est120 template A1 survey only.dwg

(C) COPYRIGHT  
The design and details shown on these drawings are applicable to this project only and may not be reproduced in whole or in part or be used for any other project or purpose without the consent of COFFS HARBOUR CITY COUNCIL with whom copyright resides

Datum:	A.H.D			
Grid:	GDA94(MGA)			
Origin:	SSM			
Reference Plans:				
	2	BOARDWALK RELOCATION	19.06.17	
	0	ISSUED FOR CONSTRUCTION	03.04.17	
Issue		Amendments	Apprd.	Date



Survey		SIGNED APPROVALS ON ORIGINAL	
Designed	AV	Section Leader	A. Shearer
Drawn	AV		
Checked	CB		
Status	Construction	Drawing Status: Unless there is an approved signature hereon, this plan is not for construction.	
Project No.	2160609		

<b>PLAZA</b>		Council Plan No.	2160609
Jetty4Shore Stage 2-4		Sheet LP2 of 20	
Jordan Esplanade Coffs Harbour		Original Size Issue	A1 2