

DIGGERS BEACH MASTERPLAN -

Refer to Enlarged Areas and Details



DIGGERS BEACH RESERVE MASTERPLAN

A new plan for the open space areas at the popular Diggers Beach Reserve sets the vision for future works and includes upgrades and expansion of facilities for recreation.

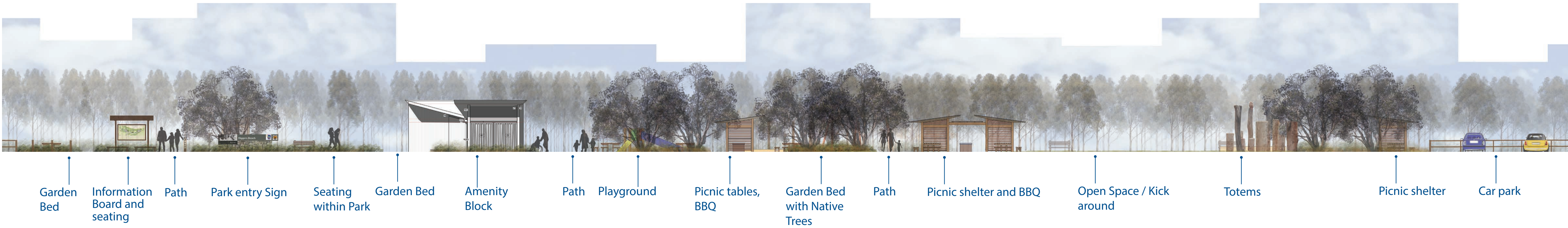
The reserve is one of Coffs Harbour’s premier destinations and the plan includes:

- Open space kick around areas with a low seating stone wall
- New picnic shelters and barbeque facilities
- Relocation and expansion of the Public Amenities within the reserve with inclusion of lifeguard equipment storage
- Additional playground equipment
- New internal footpaths to access the beach and picnic areas
- New endemic landscaping and public seating
- Park Protection fencing

A priority project is the construction of new public amenities funded by State Grant funding, Council and Regional Park planned for 2016.

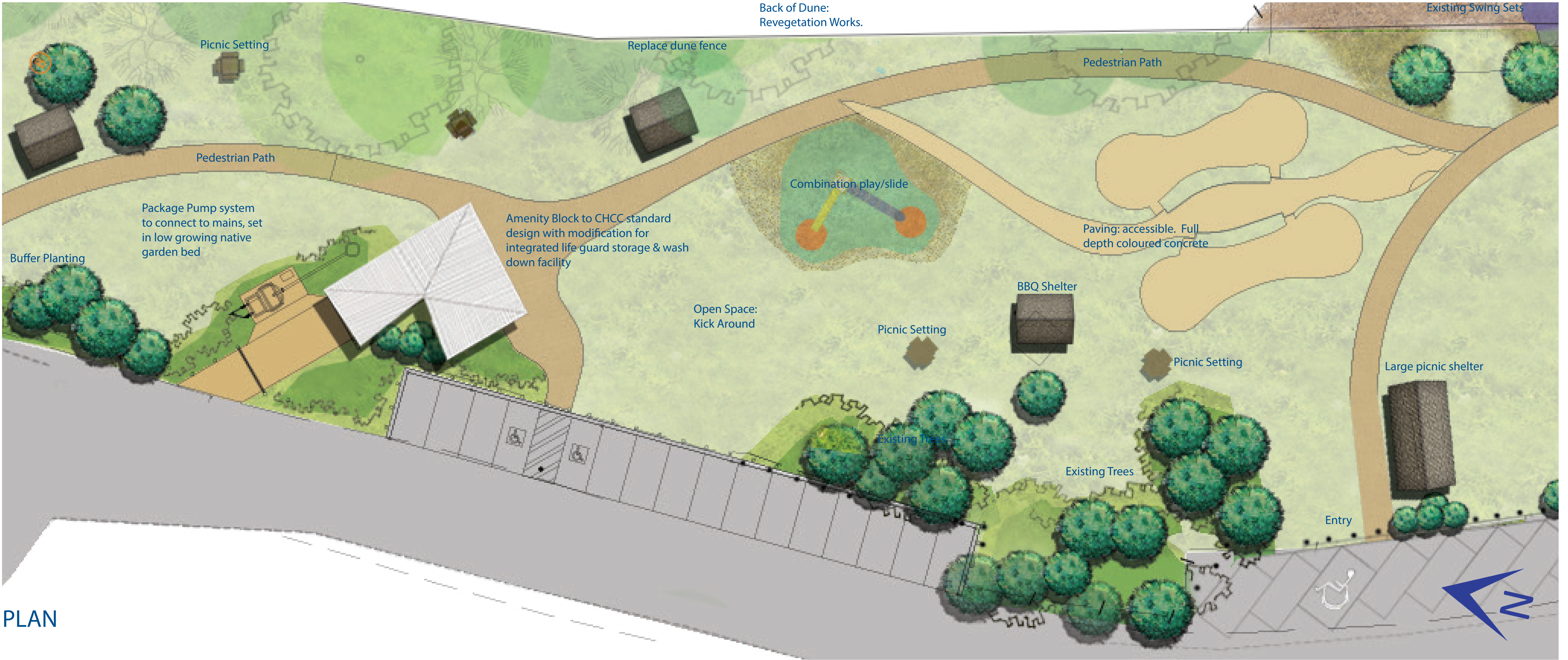


MAIN RECREATION AREA - Refer to Enlarged Areas and Details



SECTION 1 : 1

DAY USE AREA



PLAN

Amenities and Day Use Area

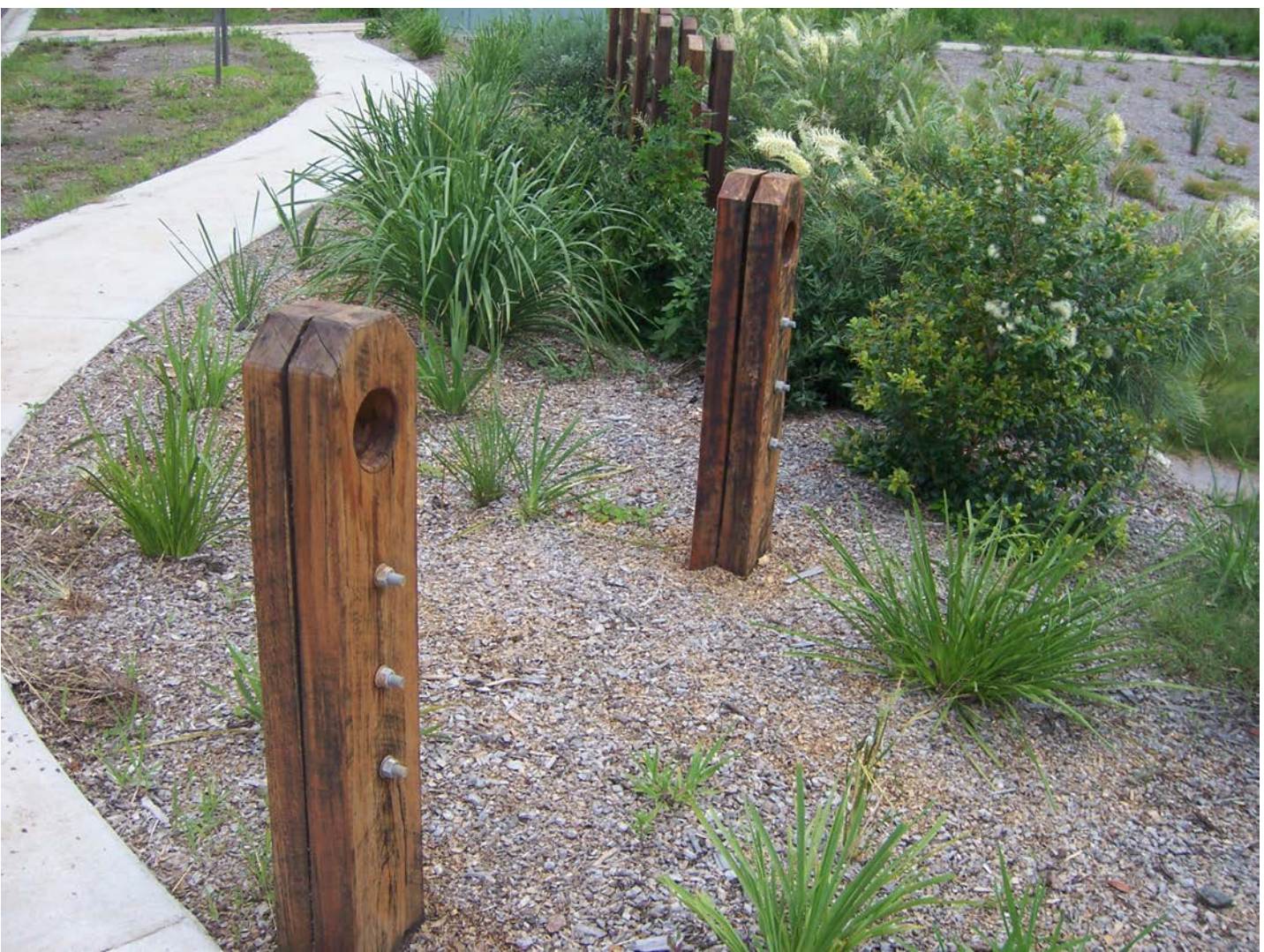
Stage 1
New amenities located within the main park, allowing for safe access from all areas of the park. Includes demolition of existing amenities and installation of a pump station. New endemic landscaping and bollarding between amenities and existing road.

Stage 2
Paths provide safe and universal access to facilities linking car parks, beach access, amenities and playground via accessible paths. Paths full depth coloured concrete with exposed aggregate features. Playground completion: replacement of crusher dust with accessible and decorative hard surface, installation of slide combination play equipment. Installation of tactile play elements.

Stage 3
New picnic settings and electric barbeques. Furniture to be Regional Park Level 1 Standard, to provide attractive and comfortable day use facilities. New fencing and bollards to protect park and dune from impact.

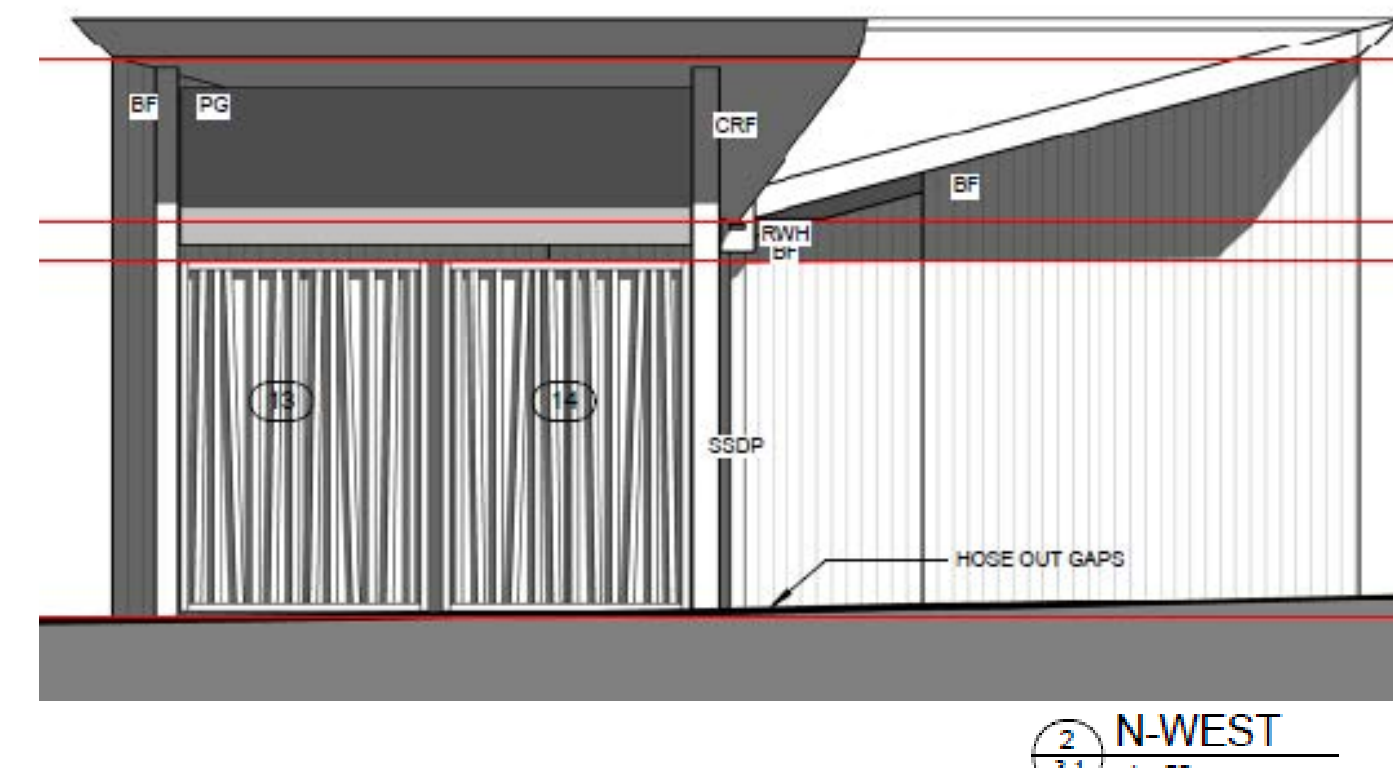
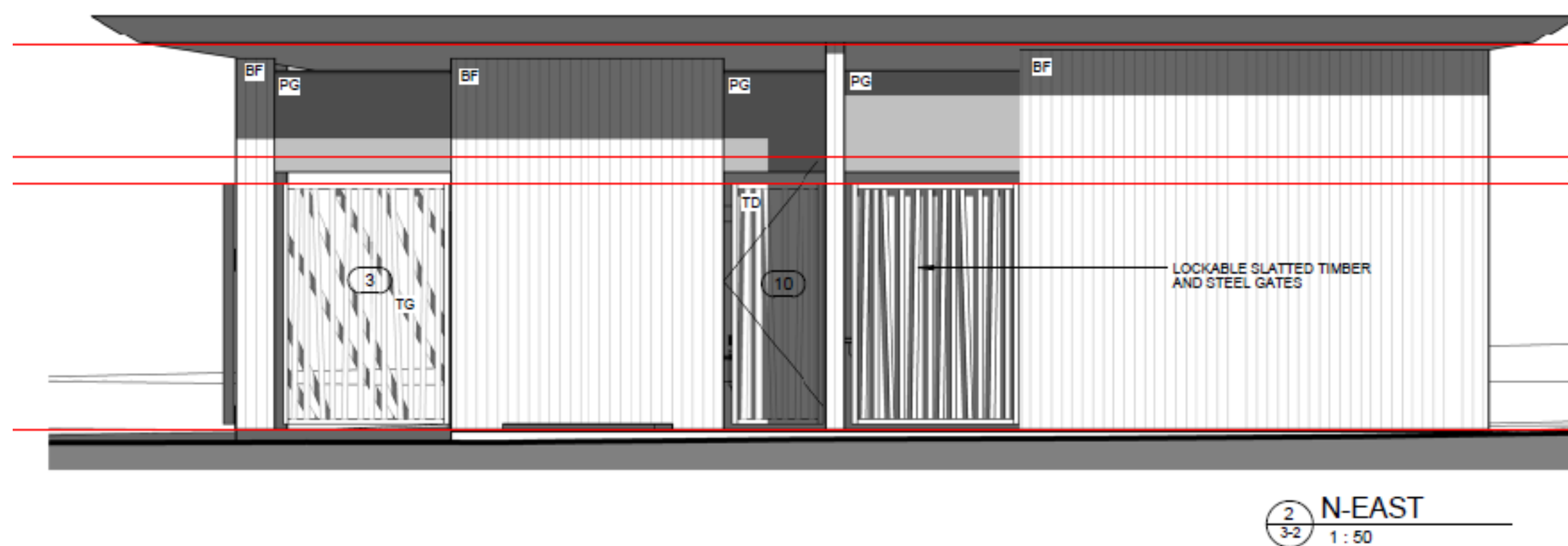
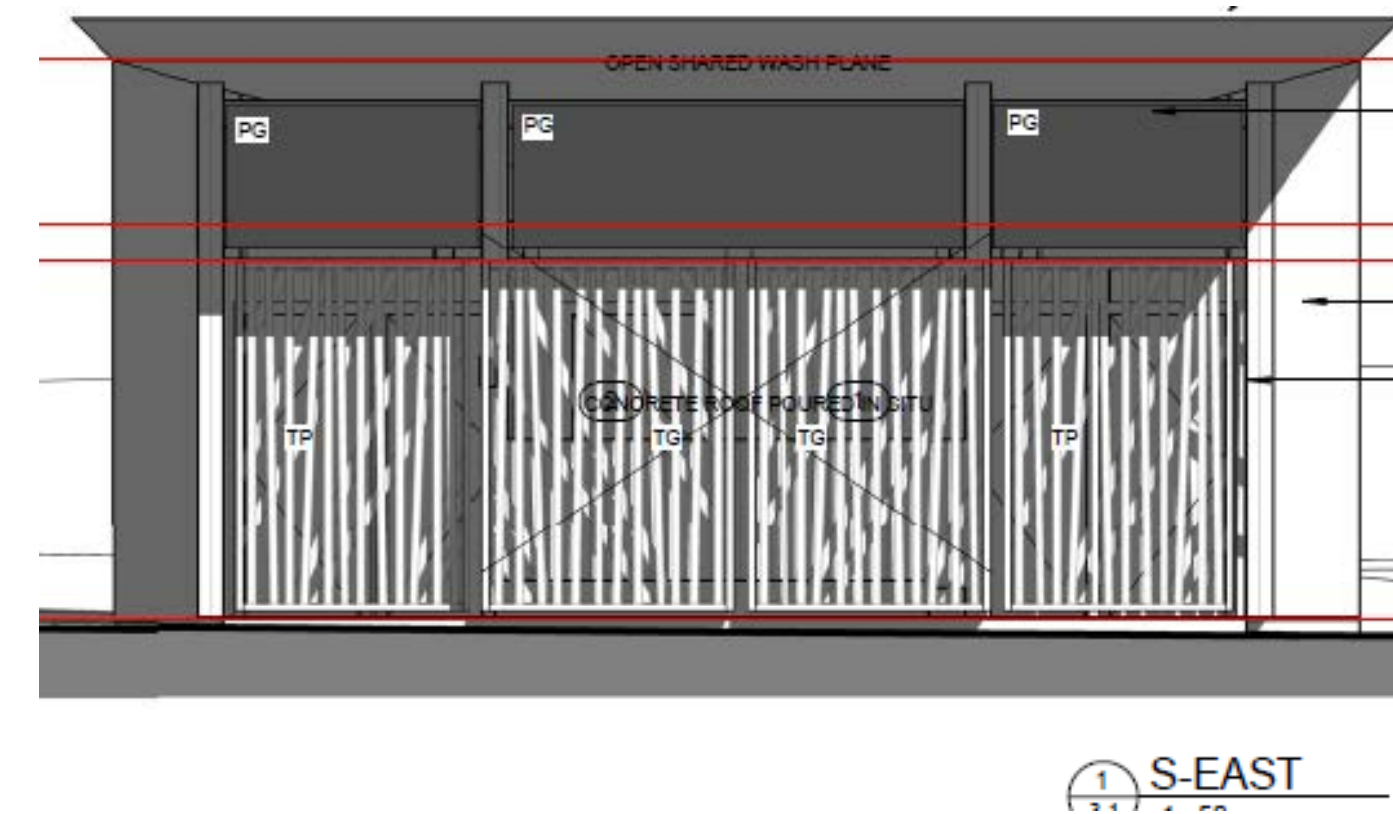
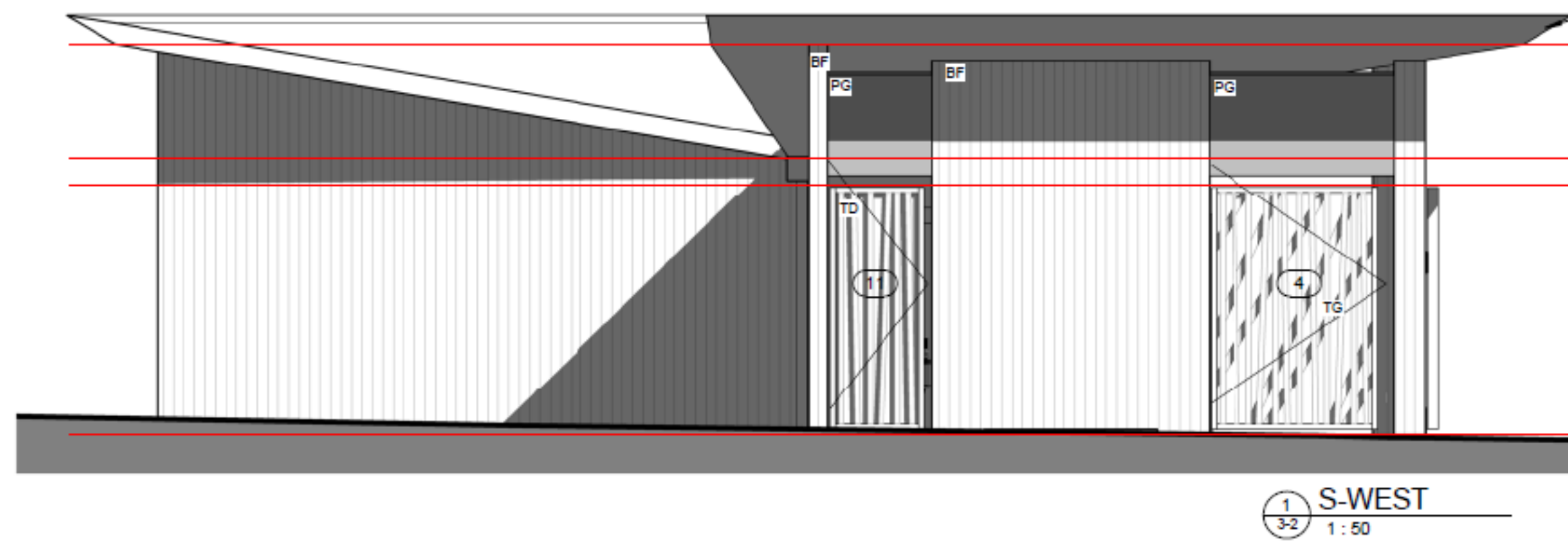


Existing play area upgrades - install decorative, accessible paths. Include tactile play elements for additional play



Provide open space protection - combining large sandstone boulders with hardwood timber bollards and endemic landscape

AMENITIES AND STORAGE FACILITIES

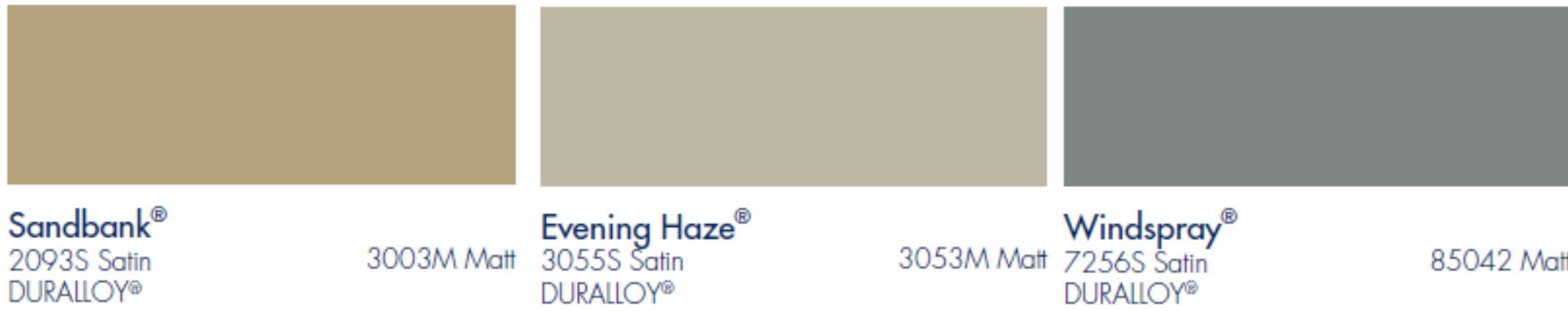


Amenities: Relocated and new architect designed public amenities provide facilities to current equal access standards. Facilities also provide improved amenity and safety. Intergrated lifeguard storage included. Materials and finishes are robust to the coastal environment.

MATERIALS PALETTE



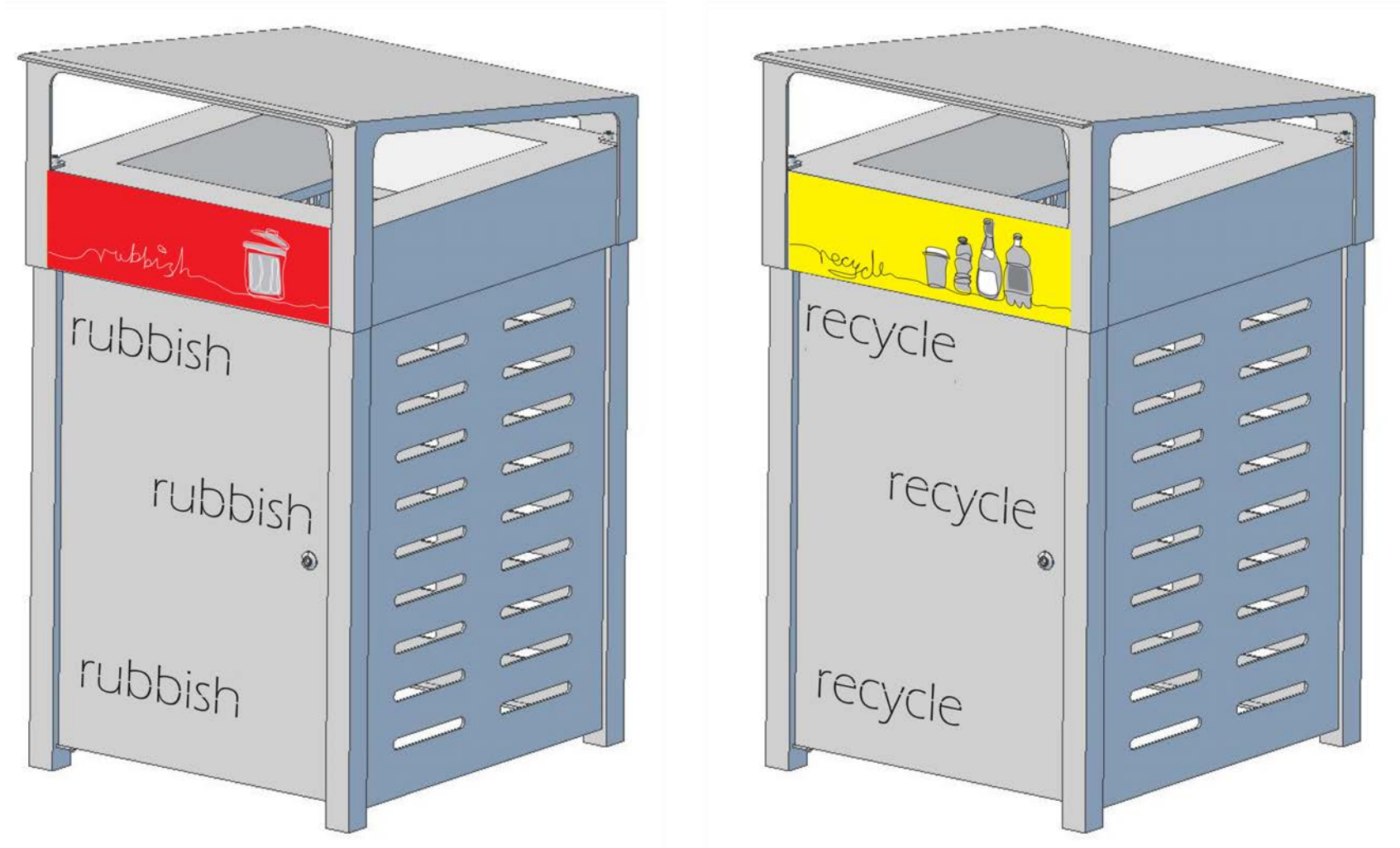
Concrete Colour Palette:
Placid Earth tones



Colourbond Steel Colour Palette:
Roofing, downpipes.



Dual Electric BBQ



Standard Litter Bin Surrounds -
robust to coastal environment &
include recycling



Endemic Landscape species provide appropriate
setting & provide habitat eg. 3 veined laurel, tuckeroo

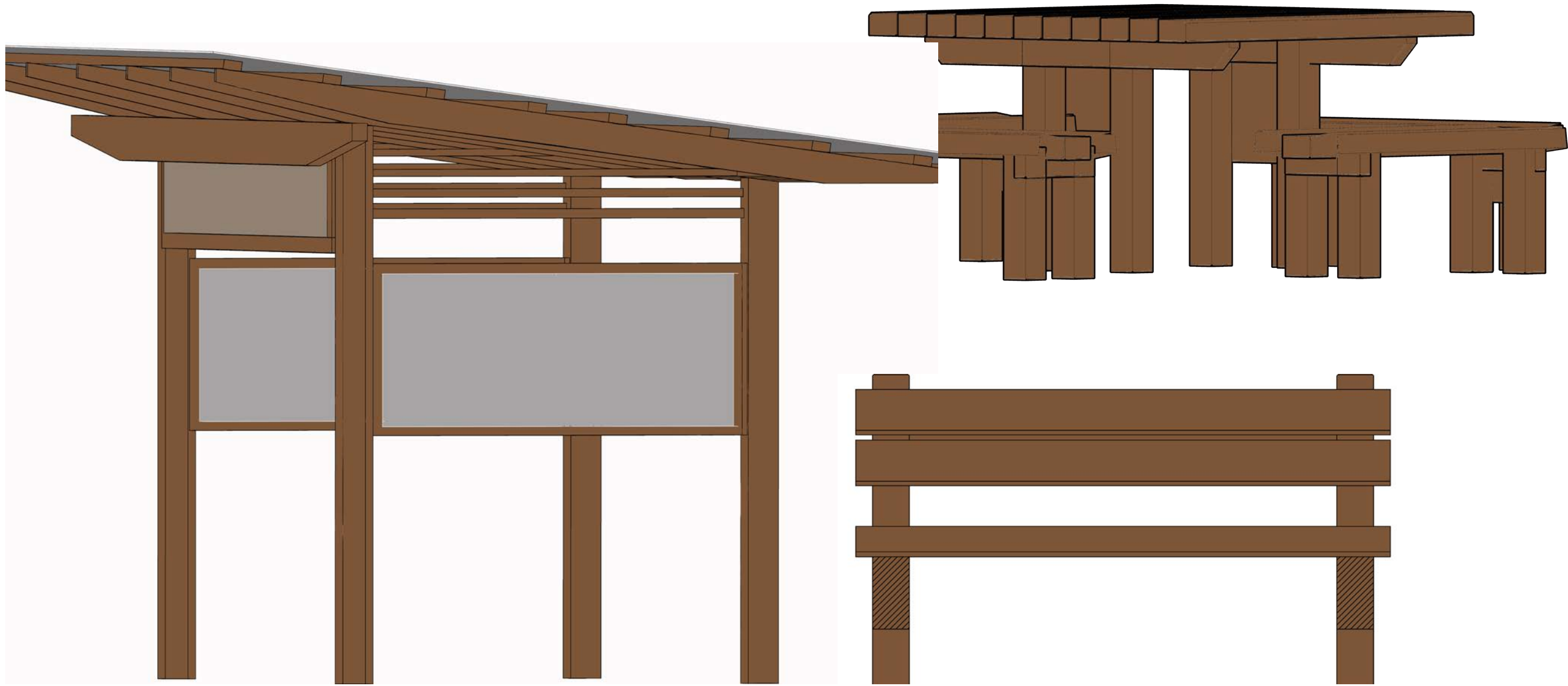


Bollard/Stone Boulders & Landscape Combination

PARK ELEMENTS

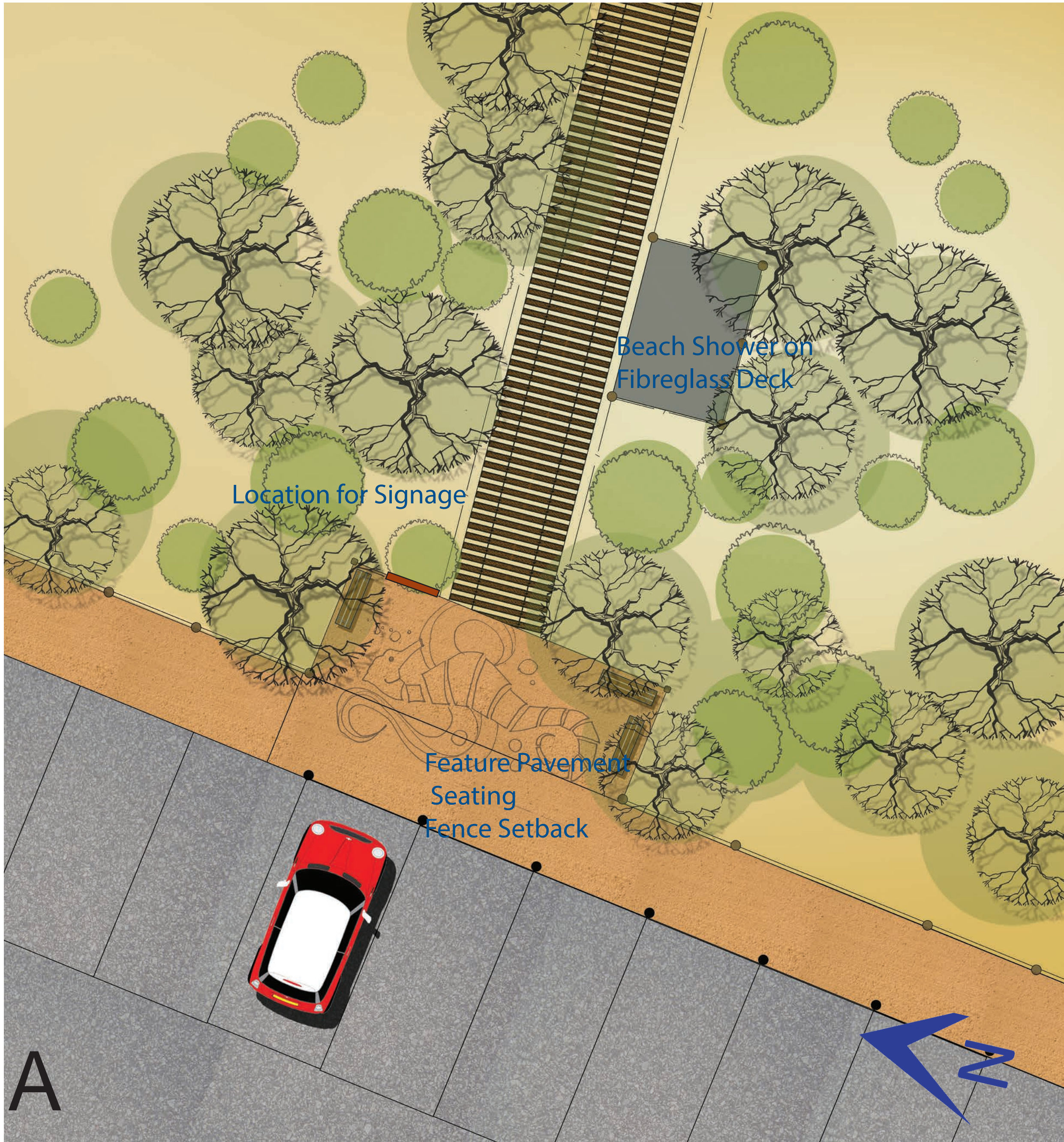


Example of Exposed
Aggregate for paths



Regional Park Standard Picnic Shelters and Furniture.

DETAIL SECTIONS

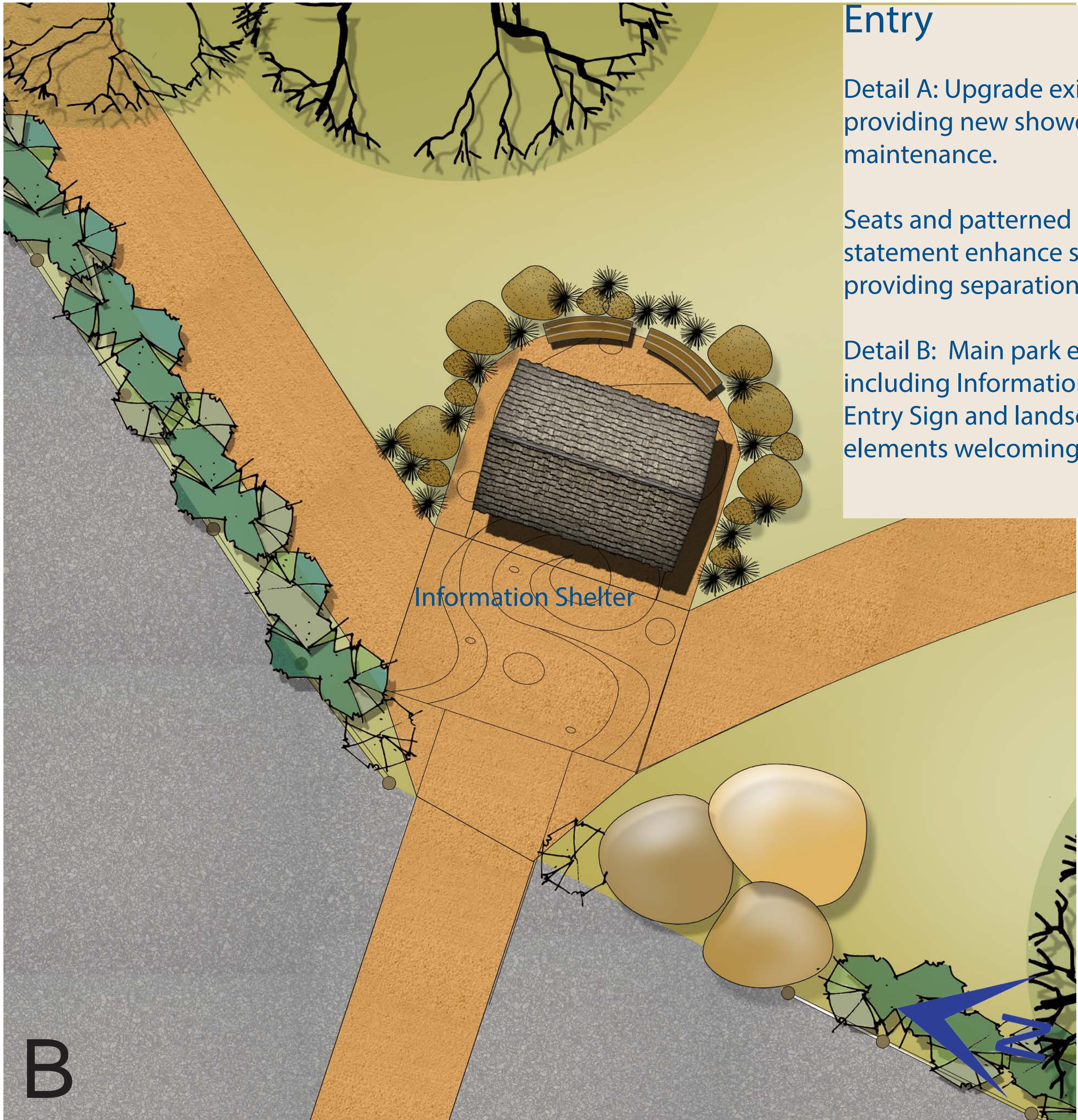


PLAN: CENTRAL CAR PARK



SECTION: 2 : 2
CENTRAL CAR PARK

- Post and Rail Fence
- Stainless Steel shower on elevated deck
- Envirodeck beach access
- Entry: seating
- Path: link to Park
- Bollard
- Car park



PLAN: PARK ENTRY



SECTION 3 : 3

- Information Board and seating
- Path
- Park entry Sign
- Seating within Park
- Garden

Entry

Detail A: Upgrade existing beach entry, providing new shower located for ease of maintenance.

Seats and patterned concrete entry statement enhance sense of arrival while providing separation from the car park.

Detail B: Main park entry including Information board, Entry Sign and landscape elements welcoming visitors to the park.