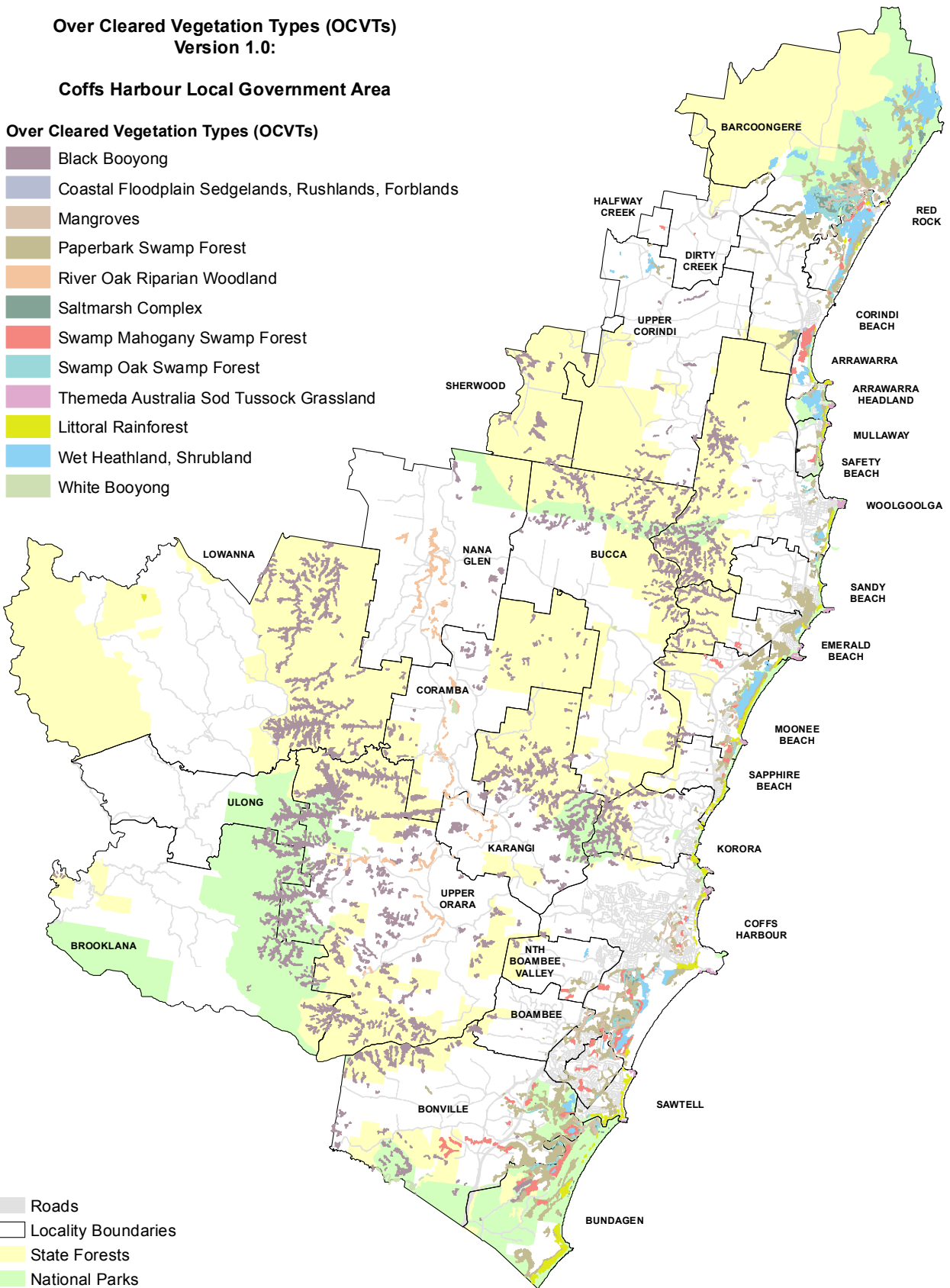


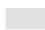
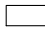
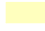
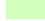
Over Cleared Vegetation Types (OCVTs) Version 1.0:

Coffs Harbour Local Government Area

Over Cleared Vegetation Types (OCVTs)

-  Black Booyong
-  Coastal Floodplain Sedgeland, Rushland, Forland
-  Mangroves
-  Paperbark Swamp Forest
-  River Oak Riparian Woodland
-  Saltmarsh Complex
-  Swamp Mahogany Swamp Forest
-  Swamp Oak Swamp Forest
-  Themeda Australia Sod Tussock Grassland
-  Littoral Rainforest
-  Wet Heathland, Shrubland
-  White Booyong



-  Roads
-  Locality Boundaries
-  State Forests
-  National Parks



Cadastral, topographic and aerial ADS40 information supplied by the NSW Department of Finance and Services and maintained by Coffs Harbour City Council.
(Copyright © 2013, NSW Department of Finance and Services). Other data displayed may have been supplied by various other agencies under licence.

This map must not be reproduced in any form, whole or part, without written permission from Coffs Harbour City Council. This Council does not warrant the correctness of this map or information contained thereon. This map Copyright © 2013, Coffs Harbour City Council.
Council accepts no liability or responsibility in respect to the map and any inaccuracies thereon. Any person relying on this plan shall do so at their own risk.

This map produced by GIS Section
Coffs Harbour City Council
User: amdamanda
Last Modified: 04/12/2013

SCALE @ Page Size B5 1:275000



Coordinate System: GDA 1994 MGA Zone 56
Projection: Transverse Mercator
Datum: GDA 1994

GRID NTH

