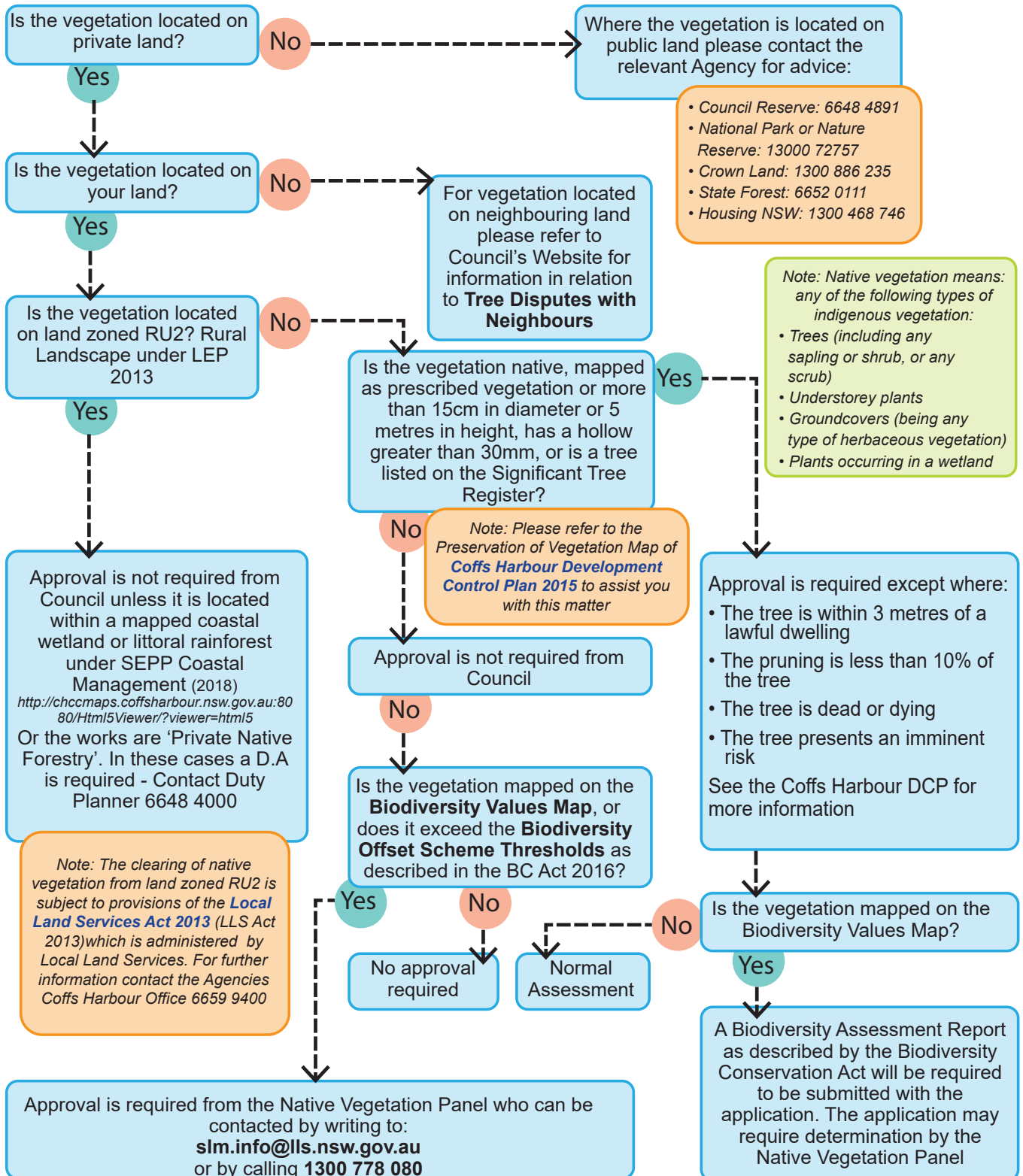


# REMOVING NATIVE VEGETATION FACT SHEET (LEP 2013)



Exemptions apply for certain activities authorised under the **Biodiversity Conservation Act 2016**, **Rural Fires Act 1997**, activities within a State Forest or on land reserved under **Forestry Act 1916**, any action authorised under the **Electricity Supply Act 1995**, the **Roads Act 1993** or the **Surveying and Spatial Information Act 2002** or any noxious weeds. Certain exemptions also apply for Educational Establishments. Please refer to Coffs Harbour Development Control Plan 2015 for further information.