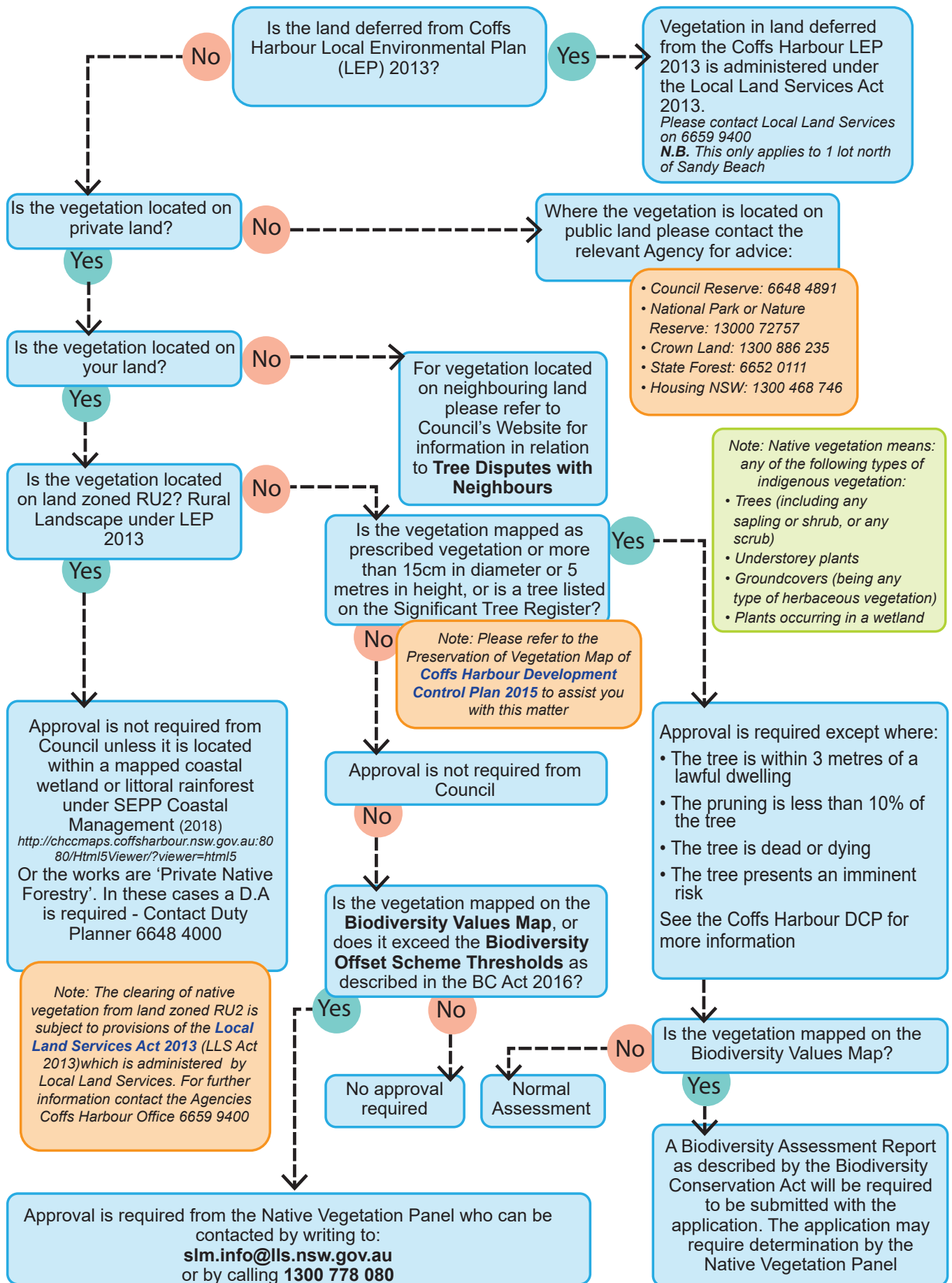


REMOVING NATIVE VEGETATION FACT SHEET (LEP 2013)



Exemptions apply for certain activities authorised under the Biodiversity Conservation Act 2016, Rural Fires Act 1997, activities within a State Forest or on land reserved under Forestry Act 1916, any action authorised under the Electricity Supply Act 1995, the Roads Act 1993 or the Surveying and Spatial Information Act 2002 or any noxious weeds. Certain exemptions also apply for Educational Establishments. Please refer to Coffs Harbour Development Control Plan 2015 for further information.