



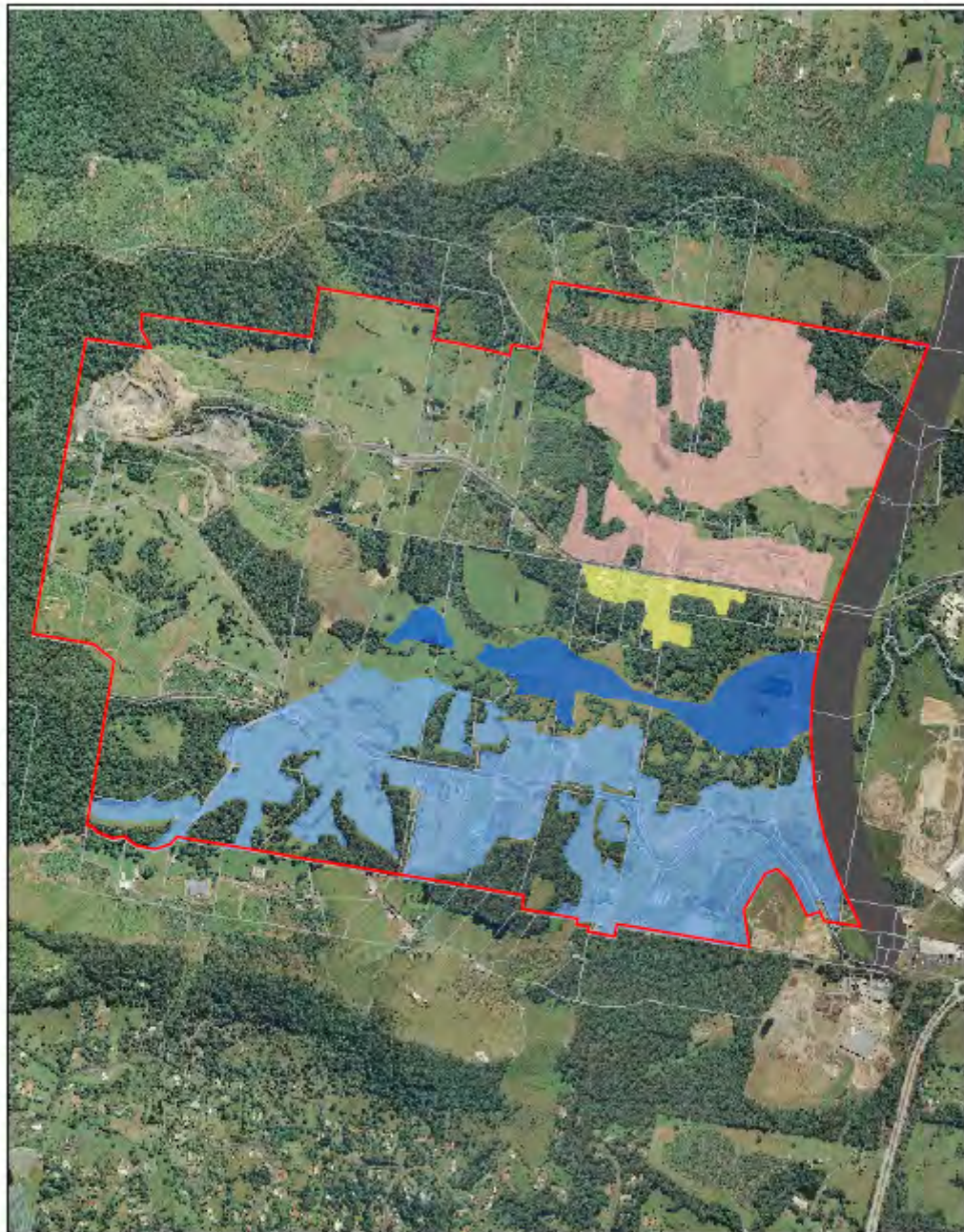
Appendix D
Land Constraints Map



Appendix E
Potential Development Areas



Appendix Figure 16 Development Potential Areas



LEGEND

- Investigation Area
- Lot boundary
- Potential Residential Development
- Potential Neighbourhood Centre
- Potential Industrial Development
- Potential Industrial Investigation - Long Term
- RTA's Preferred Pacific Highway Bypass Route

1:19,000 for A4
0 75 150 300 450 600
900m

Map Projection: Universal Transverse Mercator
Horizontal Datum: Geoidetic Datum of Australia 1984
GCS: Map Grid of Australia, Zone 55



CLIENTS/PEOPLE/PERFORMANCE

Coffs Harbour City Council
North Boambee Valley
Development Potential Areas

Job no. 22-13410
rev no. C

20 November 2008

Appendix Figure 16



GHD Pty Ltd ABN 39 008 488 373

2/115 West High Street

Coffs Harbour NSW 2450

T: (02) 6650 5600 F: (02) 6652 6021 E: cfsmail@ghd.com.au

© **GHD Pty Ltd 2008**

This report has been prepared by GHD in response to a specific brief issued by Coffs Harbour City Council and the Proposal for services presented by GHD. This report is intended for the sole use of the client. It has been prepared in accordance with the Terms of Engagement for the commission and on the basis of specific instructions and information provided by the client. The contents and conclusion of this report cannot be relied upon by any third party.

This report should not be altered, amended or abbreviated, issued in part or issued incomplete in any way without prior checking and approval by GHD.

Document Status

Rev No.	Author	Reviewer		Approved for Issue		
		Name	Signature	Name	Signature	Date
0	K. Burbidge S.Muir	M. Svikis	<i>M Svikis</i>	P. Pigram	<i>P Pigram</i>	July 2009