

# Project Information Sheet No 2.

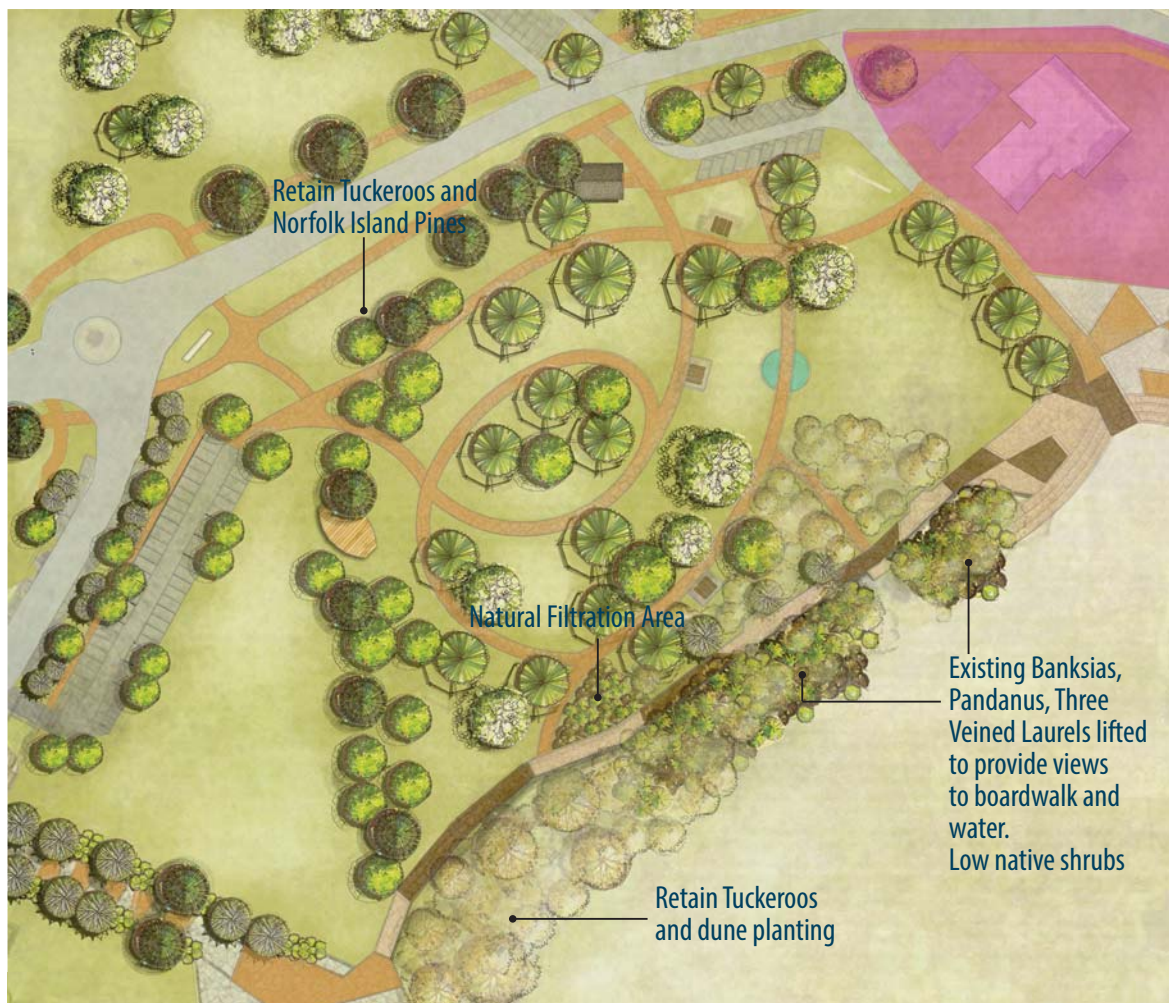
Updated 15 July 2013

The Market Precinct is currently suffering from poor drainage which is drastically effecting community activities. This includes local community weekend markets, family recreational activities and beach access.

In order to improve the drainage and overall quality of the site it is necessary to fill the site from the retained Tuckeroos and Norfolk Island pines to the dune perimeter allowing the installation of sub soil drainage and surface grates to drain excess water to a planted natural filtration area.

The aged Casurina trees within the Market/Picnic Area are in decline and would not survive the new ground levels. We appreciate and understand the importance and significance they hold to the community however due to their age and exposure they have also become a safety issue and a hazard that must be addressed and removed to prevent injury. Those Casurinas that are to be removed will be replaced with super advanced native trees, into quality soil so they establish quickly to provide shade and protection from the winds as quickly as possible.

Existing Banksias, and Three Veined Laurels will be maintained to ensure the health of the dune and to provide protection from the wind.



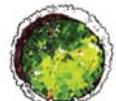
Three Veined Laurel



Pandanus



Banksia



Tuckeroo



Norfolk Island Pine

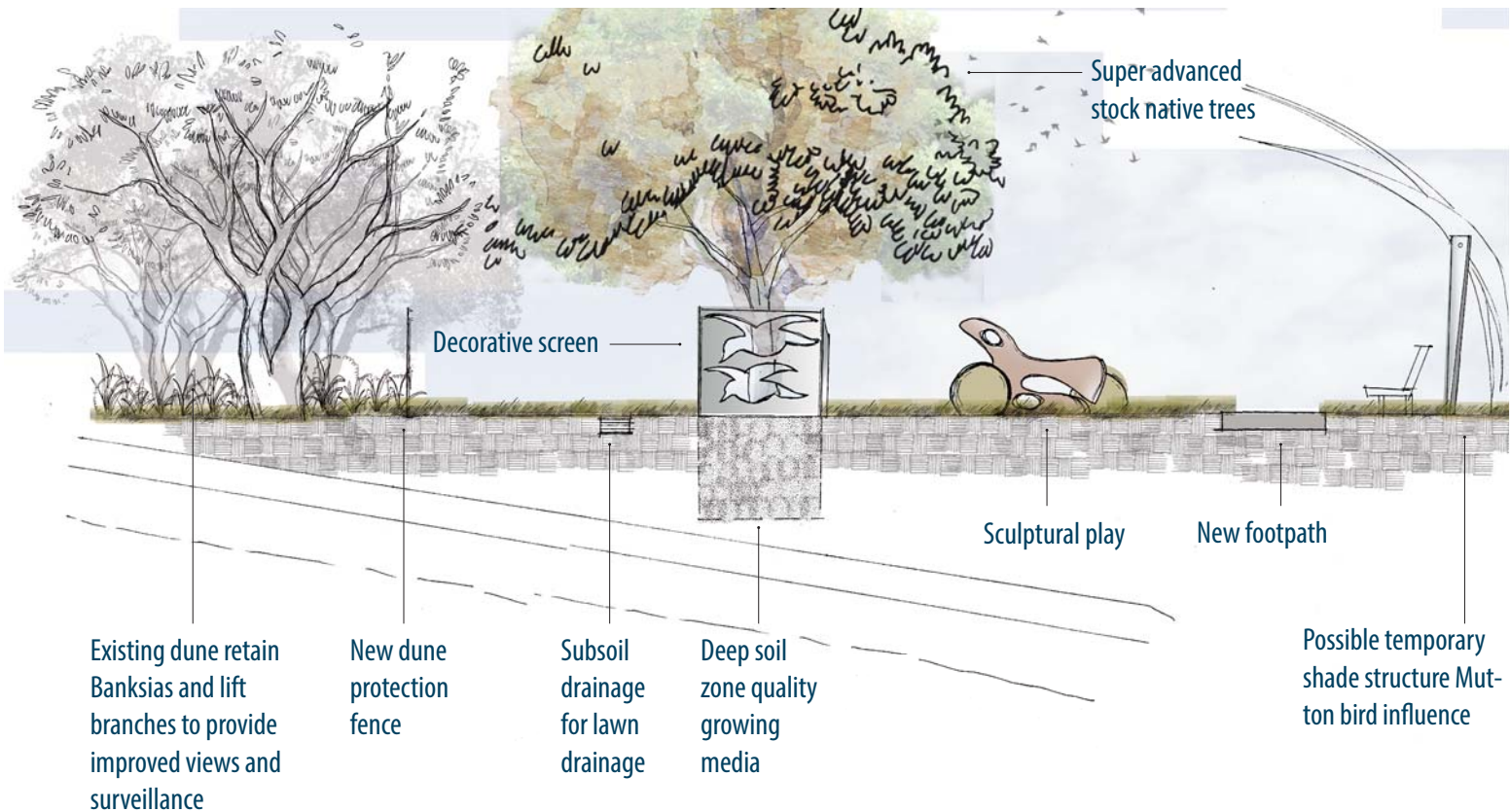


Low Native Shrubs



Retain Existing Vegetation

## Planting Detail Through Market/Picnic Area



The removal and replacement of the Sheoaks within the Market Precinct is imperative to the project, however we are sensitive to the needs of the community to provide shade and wind protection for its users. Replacing the trees with native species will provide wind and sun protection and simultaneously provide habitats for local fauna.



Market/Picnic Area

Additional information and plans are available from Jetty4Shore Project site on Council's Website: [www.coffsharbour.nsw.gov.au](http://www.coffsharbour.nsw.gov.au)  
These plans are on exhibition until **4.30pm Friday 9th August 2013**. Submissions need to be lodged with Council prior to the closing date.