

IR 1247755



INFORMATION DIRECTORY FOR OLDER PEOPLE



TO UPDATE INFORMATION IN THIS DIRECTORY

For any changes to information contained in this directory please email Alison Kelly at Council on alison.kelly@chcc.nsw.gov.au or telephone 6648 4832.

Thank You

For any information required that is not found in this directory please contact

Commonwealth Carelink Centre

1800 052 222



If you are from a non-English speaking background and need help in understanding any of the information in this Directory please telephone:

Anglicare Settlement Support Services 6651 8764

For other assistance please telephone:

Coffs Harbour City Council 6648 4000

Aged Care Assessment Team 6656 7688

INDEX

		Page No.
1.	Accommodation	1
2.	Carers Services	5
3.	Churches and Religion	6
4.	Equipment Hire	11
5.	General Information - Local and Statewide	12
6.	Health Services	14
7.	Legal Information	19
8.	Library Services	20
9.	Meals on Wheels	21
10.	Pensions and Other Benefits	22
11.	Recreation, Leisure, Education and Training	23
12.	Respite Care and Day Centres for Adults	34
13.	Social Groups and Service Groups	36
14.	Support and Self Help Groups	39
15.	Transport	42

PLEASE NOTE

**Referral information and further details
may be obtained by telephoning
the relevant organisation direct.**

1. ACCOMMODATION

Crisis Accommodation

Coffs Harbour Accommodation Brokerage
and Housing Support Service
Stoker House
1/19 Park Avenue
COFFS HARBOUR NSW 2450 6691 0115

Crisis Accommodation for Women

Warrina Women's and Children's Refuge
(Domestic Violence Situation)
COFFS HARBOUR 6652 4000

Housing

Department of Housing
51 Moonee Street
COFFS HARBOUR NSW 2450 6650 1300

Housing Advice

Assistance With Care and Housing for the Aged
PO Box 132
MACKSVILLE NSW 2447 6568 2522

Community Housing Limited
Stoker House
1/19 Park Avenue
COFFS HARBOUR NSW 2450 6691 0100

Aged Accommodation

Bellorana Limited Nursing Home & Hostel Cnr Church & Watsons Streets BELLINGEN NSW 2454	6655 2777
Boambee Gardens Estate 17 Walco Drive SAWTELL NSW 2452	6690 2500
Casey Court (Retirement Village) 5-7 Gordon Street COFFS HARBOUR NSW 2450	6650 9145
Coffs Harbour Legacy Nursing Home 55 Victoria Street COFFS HARBOUR NSW 2450	6652 1426
Coffs Harbour Legacy Units PO Box 260J 96 Albany Street AND 5-7 Shea Street COFFS HARBOUR NSW 2450	6652 7583
Coffs Harbour Nursing Home 45 Victoria Street COFFS HARBOUR NSW 2450	6652 1494
Coffs Haven Aged Care Facility (Churches of Christ) (Nursing Home) 18 Sand Street COFFS HARBOUR NSW 2450	6656 8400 Fax 6656 8499
Dalpura Village 9 Bray Street COFFS HARBOUR NSW 2450 (Churches of Christ Community Care)	(02) 9636 6466
Department of Housing - Units 51 Moonee Street COFFS HARBOUR NSW 2450	6650 1300

Aged Accommodation (cont'd)

Domain Coffs Harbour (Aged Care Facility) 50 Lakes Drive COFFS HARBOUR NSW 2450	6659 4800
The Lakes Village (Over 55's Independent Living) Lakes Drive COFFS HARBOUR NSW 2450 www.thelakesvillage.com.au	1800 993 202
Lime Tree Park 210 Pacific Highway COFFS HARBOUR NSW 2450	6652 1215
Marian Grove Marian Place TOORMINA NSW 2452 AND Villa Maria 115 Sawtell Road TOORMINA NSW 2452 (PO Box 72, SAWTELL NSW 2452)	6653 1241 (Office - Marian Place)
Masonic Retirement Village 33 Mackays Road COFFS HARBOUR NSW 2450	6650 2200
Mater Christi Hostel and Nursing Home Marian Place TOORMINA NSW 2452	6658 6133
Ozanam Villa 9 Nimbin Place COFFS HARBOUR NSW 2450	6652 2366
St Augustine's Nursing Home 6-8 Bonville Street COFFS HARBOUR NSW 2450	6652 5086

Aged Accommodation (cont'd)

St Josephs - Hostel 33-39 Azalea Avenue COFFS HARBOUR NSW 2450	6651 2870
Sawtell Legacy Units Lyons Road SAWTELL NSW 2452	6652 7583
Sunrise Supported Living 92 Taloumbi Road COFFS HARBOUR NSW 2450	6651 3374
Taloumbi Gardens 94 Taloumbi Road COFFS HARBOUR NSW 2450	6650 0746
Villa Monica 5 Valley Street COFFS HARBOUR NSW 2450	6650 9145
Woolgoolga Retirement Village – Units and Hostel Maldon Place WOOLGOOLGA NSW 2456	6654 0022



2. CARERS SERVICES

Carers NSW Head Office (02) 9280 4744
Level 18, Roden Cutler House
24 Campbell Street
SYDNEY NSW 2000

Carers NSW Carer Line 1800 242 636

- Carer information and referral
- National Carer Counselling Program

Carers NSW (02) 6650 0512

- Older Parent Carer Program
- Better Start for Children With Disability

Coffs Harbour Carers Support Group (02) 6653 2785
(02) 6651 8504
Mobile 0421 441 133

Mid North Coast Carer Respite Centre 1800 059 059
Suite 2 or
9 River Street 6568 4271
PO Box 514
MACKSVILLE NSW 2447



3. CHURCHES AND RELIGION

Anglican

St Augustines Anglican Church

19-21 Scarborough Street
WOOLGOOLGA NSW 2456
Phone: 6654 1370

St Johns

2 McLean Street
COFFS HARBOUR NSW 2450
Phone: 6651 4700

St Nicholas

Corner Seventh Avenue and Elizabeth Street
SAWTELL NSW 2452
Phone: 6658 1626

The Church of the Holy Faith

East Bonville Road
BONVILLE NSW 2441
Phone: 6658 1626

Catholic

St Augustines Catholic Church

Gordon Street
COFFS HARBOUR NSW 2450
Phone: 6652 3222 Presbytery
6652 5714 Parish Office

Church of St Francis Xavier

Corner Scarborough and Hastings Streets
WOOLGOOLGA NSW 2456
Phone: 6652 3222

Mary Help of Christians

44 Boronia Street
SAWTELL NSW 2452
Phone: 6658 3544 (Office and Presbytery)

Churches and Religion (cont'd)

Other

Baptist Church

Corner High and Curacoa Streets
COFFS HARBOUR NSW 2450
Phone: 6652 3352

Sandy Beach Community Baptist Church

2b Morgans Road
SANDY BEACH NSW 2450
Phone: 6654 0708

Bethel Christian Centre

Pentecostal Church
76 Bray Street
COFFS HARBOUR NSW 2450
Phone: 6652 6282 and 6652 7620

Christadelphian Ecclesia

PO Box 10
BONVILLE NSW 2441
Phone: 6653 4058

Christian Outreach Centre

Lot 101 Stadium Drive
COFFS HARBOUR NSW 2450
Phone: 6652 8511
6653 4473 (after hours)

Christian Life Centre

Assemblies of God Church
25 Alison Street
COFFS HARBOUR NSW 2450
Phone: 6651 2455
6651 2558 (after hours)

Church of Jesus Christ of Latter Day Saints

Perry Drive
COFFS HARBOUR NSW 2450
Phone: 6652 7686

Churches and Religion (cont'd)

Other (cont'd)

Coffs Harbour Care

Christian Life Centre
12 Earl Street
COFFS HARBOUR NSW 2450
Phone: 6652 3116

Guru Nanak Sikh Temple

River Street
WOOLGOOLGA NSW 2456
Phone: 6654 1498 (Home or Priest)
6654 0059 (Temple)

Jehovah's Witnesses

Kingdom Hall
Gentle Street
COFFS HARBOUR NSW 2450
Phone: 6652 1521

Lutheran Church

Service held at the Community Village
Earl Street
COFFS HARBOUR NSW 2450
Phone: 6658 3747

Presbyterian Church

187 High Street
COFFS HARBOUR NSW 2450
Phone: 6652 3183

Salvation Army

Bible Studies
Agency: Salvation Army
40 Mastracolas Road (PO Box 6071)
COFFS HARBOUR NSW 2450
Phone: 6652 8777 (Office)

Churches and Religion (cont'd)

Other (cont'd)

Seventh Day Adventist

Corner Pacific Highway and Valley Street (PO Box 38)
COFFS HARBOUR NSW 2450
Phone: 6651 7447

The Baha'i Faith

Local Spiritual Assembly of the Baha'is of Coffs Harbour

PO Box 1464
COFFS HARBOUR NSW 2450
Phone: Chairperson 6651 4339
Secretary 6656 2340

Toormina Christian Fellowship

Brethren
7-9 Nariah Crescent
TOORMINA NSW 2452
Phone: 6653 3813

Uniting Church

Cnr Gordon and Vernon Streets
COFFS HARBOUR NSW 2450
Phone: 6652 7044 (Parish Office)

Uniting Church

NANA GLEN NSW 2450
Phone: 6652 7044 (Parish Office)

Uniting Church

St Pauls – Sawtell
24 Elizabeth Street
SAWTELL NSW 2452
Phone: 6658 3866 Open Door
6652 7044 (Parish Office, Coffs Harbour)
6653 3179 (Church)

Churches and Religion (cont'd)

Other (cont'd)

Uniting Church

Trafalgar Street
WOOLGOOLGA NSW 2456
Phone: 6652 7044 (Parish Office)
6654 1887

Wesleyan Methodist Church

Bray Street
PO Box 6240
COFFS HARBOUR NSW 2450
Phone: 6652 7422 (Church Office)
6652 2142 (Home)

West Coffs Church of Christ

30 Loaders Lane
COFFS HARBOUR NSW 2450
Phone: 6651 3954

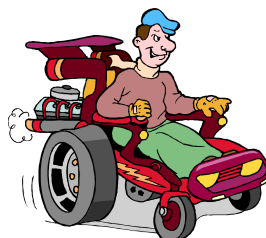


4. EQUIPMENT HIRE

Hales Orthotics 6651 2600
92 Bray Street
COFFS HARBOUR NSW 2450

Scooters and Mobility Australia 6651 5333
182 Orlando Street
COFFS HARBOUR NSW 2450

Willaid Pty Ltd 6651 7900
Unit 1/16 Isles Drive
COFFS HARBOUR NSW 2450



Beach Wheelchairs

Coffs Harbour City Council FREE 6648 4000
For use on any beach within the
Coffs Harbour shire. Council will
transport wheelchair to desired
location if required.

Coffs Harbour Yacht Club FREE 6652 4390

Northcott Society Hire Fee 6651 2366

5. GENERAL INFORMATION

Local

Aboriginal Community Centre Coffs Harbour Community Village Earl Street COFFS HARBOUR NSW 2450	6648 3683
Bayldon Community Centre Toormina Road PO Box 121 TOORMINA NSW 2452	6658 2285
Catholic Community Services 4/1 Duke Street COFFS HARBOUR NSW 2452	6651 9177
Community Care Options Curacoa Street PO Box 1382 COFFS HARBOUR NSW 2450	6650 2000
Coffs Harbour Neighbourhood Centre Coffs Harbour Community Village Earl Street COFFS HARBOUR NSW 2450	6648 3694
Community Settlement Services Coffs Harbour Community Village Earl Street COFFS HARBOUR NSW 2450	6652 4699
Home Care Service of NSW 72 Grafton Street PO Box 550 COFFS HARBOUR NSW 2450	6659 1360
Toormina Neighbourhood House Sawtell Road PO Box 335 TOORMINA NSW 2452	6658 4655

Woolgoolga Neighbourhood Centre
Cnr Beach and Boundary Streets
PO Box 646
WOOLGOOLGA NSW 2456

6654 1598

Statewide

The Aged Care Rights Service 1800 424 079

Department of Ageing, Disability and Home Care
Head Office (02) 9367 6811
Coffs Harbour Office 6659 1300

Carelink 1800 052 222

Combined Pensioners Toll Free 1800 451 488

National Retirement Association (02) 9235 0511

National Seniors Association (02) 9891 1199

NSW Council on the Ageing (02) 9286 3860

Seniors Information Service 131 244
Level 4
280 Pitt Street
SYDNEY NSW 2000

Superannuants Association (02) 9281 3588

Department of Veteran Affairs 6650 9029
1800 555 254



6. HEALTH SERVICES

Assessment and Rehabilitation Services

Aged Care Transitional Intervention Program (ACTIP) 6656 7641
Coffs Harbour Health Campus (Public Hospital)
345 Pacific Highway
COFFS HARBOUR NSW 2450

Allied Health 6656 7700
Coffs Harbour Health Campus (Public Hospital)
345 Pacific Highway
COFFS HARBOUR NSW 2450

Coffs Harbour Health Campus (Public Hospital) 6656 7000
345 Pacific Highway
COFFS HARBOUR NSW 2450

Commonwealth Rehabilitation Service Australia 6648 7920
Coffs Harbour Regional Unit
Suite 6, Commercial Centre
1 Duke Street
COFFS HARBOUR NSW 2450

Ramsay Professional Services 6658 0322
Baringa Private Hospital
Mackays Road
COFFS HARBOUR NSW 2450

Community Nursing Services

Bananacoast Home Nursing and Respite Care 6651 3153
66 Albany Street Mobile 0418 425 504
COFFS HARBOUR NSW 2450

Coffs Coast Health & Community Care 6652 9155
Suite 4, 52 Minorie Drive
TOORMINA NSW 2452
PO Box 8030
COFFS HARBOUR NSW 2450

Community Nursing Services (cont'd)

Community Nursing 6656 7820
Coffs Harbour Health Campus (Public Hospital)
345 Pacific Highway
COFFS HARBOUR NSW 2450

Kincare 1300 733 510
(Personal Care Services and Domestic Assistance)

Stanhope Home Nursing Services (Toll Free) 1800 625 887
(Nursing, personal care, domestic assistance and respite care)

Continence Services and Information

Community Nursing 6656 7804
Coffs Harbour Health Campus
345 Pacific Highway
COFFS HARBOUR NSW 2450

Dementia Services and Information

Aged Care Assessment Team 6656 7688
Coffs Harbour Health Campus
345 Pacific Highway
COFFS HARBOUR NSW 2450

Dementia Helpline Free Call 1800 639 331

Dental Clinic for Pensioners

Mid North Coast Area Health Service 6656 7800
Dental Clinic
Coffs Harbour Health Campus
345 Pacific Highway
COFFS HARBOUR NSW 2450

Health Care Card Holders only



Health Centres

Women's Health Centre 6652 8111
74 Victoria Street
PO Box 46
COFFS HARBOUR NSW 2450

Community Health 6656 7820
Coffs Harbour Health Campus
345 Pacific Highway
COFFS HARBOUR NSW 2450

Aboriginal Health Service 6656 7845
Coffs Harbour Health Campus
345 Pacific Highway
COFFS HARBOUR NSW 2450

Galambila Aboriginal Health Clinic 6652 0800
Cnr Boambee and High Streets
COFFS HARBOUR NSW 2450

Ramsay Professional Services 6658 0322
Baringa Private Hospital
Mackays Road
COFFS HARBOUR NSW 2450

Hearing Centres

Community Health Centre 6656 7820
Coffs Harbour Health Campus
345 Pacific Highway
COFFS HARBOUR NSW 2450

Australian Hearing Services 6651 3222
2 Lyster Street
COFFS HARBOUR NSW 2450

**Private Hearing Centres in
Yellow Pages of the Telephone Directory**

Vision Australia
(Blindness and low vision services)
126 West High Street
COFFS HARBOUR NSW 2450

Referrals 1300 847 466
6651 1863

Hospitals

Baringa Private Hospital
Mackays Road
COFFS HARBOUR NSW 2450

6659 4444

Coffs Harbour Health Campus (Public Hospital)
CASUALTY
345 Pacific Highway
COFFS HARBOUR NSW 2450

6656 7000
6656 7400

Medical Aids and Appliances

Hales Orthotic Services
92 Bray Street
COFFS HARBOUR NSW 2450

6651 2600

Scooters Australia
40 Park Avenue
COFFS HARBOUR NSW 2450

6651 5333

Willaid Health Care Equipment
22A Gordon Street
COFFS HARBOUR NSW 2450

6651 7900

Nursing Home and Hostel Assessments

Aged Care Assessment Team
Coffs Harbour Health Campus
Pacific Highway
COFFS HARBOUR NSW 2450

6656 7688

Palliative Care

Look Good – Feel Better
Coffs Harbour Health Campus
345 Pacific Highway
COFFS HARBOUR NSW 2450

6656 7683

Palliative Care
Coffs Harbour Health Campus (Base Hospital)
345 Pacific Highway
COFFS HARBOUR NSW 2450

6656 7683

Podiatry Services

Community Health
Coffs Harbour Health Campus
345 Pacific Highway
COFFS HARBOUR NSW 2450

6656 7688

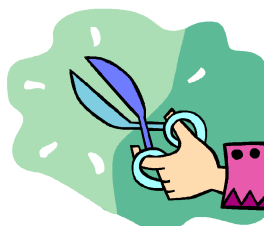


Health Care Card Holders only

Private Podiatry Services in Yellow Pages of the Telephone Directory

Snipin 'N Clipin Nails
Mobile Service - Monday to Saturday

6653 6140
0429 156 730



Vision Australia
PO Box 1401
COFFS HARBOUR NSW 2450

6651 1863

7. LEGAL INFORMATION

Chamber Magistrate 6651 9025
Coffs Harbour Court House
2 Moonee Street
COFFS HARBOUR NSW 2450

Aboriginal Legal Service 6651 8033
182 Pacific Highway
COFFS HARBOUR NSW 2450

Legal Advisory Service 6648 3694
Neighbourhood Centre
Coffs Harbour Community Village
Earl Street
COFFS HARBOUR NSW 2450

Legal Aid Commission 6651 7899
Coffs Harbour District
4 Park Avenue
COFFS HARBOUR NSW 2450

Legal Aid Commission of NSW (02) 9219 5000
323 Castlereagh Street
SYDNEY NSW 2000

Guardianship Tribunal (02) 9555 8500
2a Rowntree Street Toll Free 1800 463 928
BALMAIN NSW 2041

Protective Commissioner and Public Guardian (02) 9265 3131
Level 15, Piccadilly Tower
133 Castlereagh Street
SYDNEY NSW 2000

Consumer Affairs

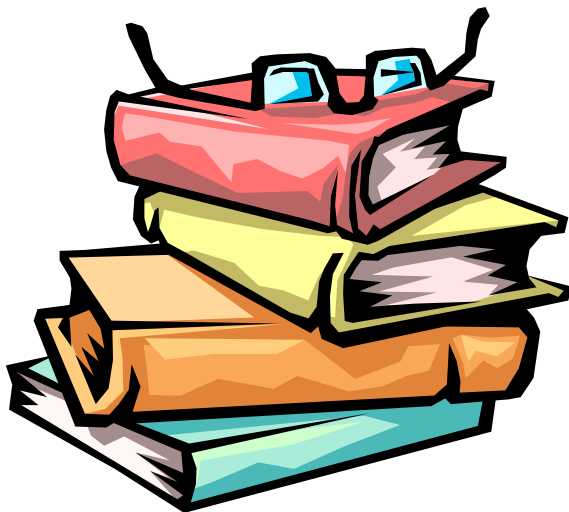
Department of Fair Trading 6653 0700
22 Park Avenue
COFFS HARBOUR NSW 2450

8. LIBRARY SERVICES

Coffs Harbour City Library and Information Service 6648 4900
Rigby House
Cnr Duke and Coff Streets
COFFS HARBOUR NSW 2450

Toormina Library and Information Centre 6653 1526
Minorie Drive
TOORMINA NSW 2450

Woolgoolga Library and Information Centre 6654 0010
Ganderton Street
WOOLGOOLGA NSW 2456



9. MEALS ON WHEELS

Aboriginal Wheels to Meals Service 6648 3680
Coffs Harbour Community Village
Earl Street
COFFS HARBOUR NSW 2450

COFFS HARBOUR MEALS ON WHEELS 6648 3600
Coffs Harbour Community Village
Earl Street
COFFS HARBOUR NSW 2450

SAWTELL MEALS ON WHEELS 6653 3298
25 Elizabeth Street
SAWTELL NSW 2452

WOOLGOOLGA MEALS ON WHEELS 6654 2870
Boundary Street
PO Box 89
WOOLGOOLGA NSW 2456



10. PENSIONS AND OTHER BENEFITS

Centrelink	
Aged Pension Information	132 300
Disability Pension Information	132 717
21-25 Duke Street	
PO Box 1231	
COFFS HARBOUR NSW 2450	
Department of Veterans Affairs	6650 9029
Information Service	
21-25 Duke Street	
PO Box 1230	
COFFS HARBOUR NSW 2450	
Luke Hartsuyker's Pension Information Book	6652 6233
Luke Hartsuyker's Office	1800 800 217
39 Little Street	
PO Box 2056	
COFFS HARBOUR NSW 2450	

NSW Seniors Card Applications
Available at any Post Office, Council or Neighbourhood Centre

11. RECREATION, LEISURE, EDUCATION AND TRAINING

Arts, Craft and Recreational Groups

Bananacoast Radio Control Flyers Club Model Flying Field Pacific Highway MOONEE NSW 2450	6652 3570
Bobbin Lace Making - Joyce Marshall 16 Alexander Street NANA GLEN RAIL NSW 2450	6654 3316
Coffs Calligraphers	6651 2406
Coffs Harbour Amateur Radio Club PO Box 555 COFFS HARBOUR NSW 2450	6653 4601
Coffs Harbour Art and Craft Group PO Box 6354 Park Beach Plaza COFFS HARBOUR NSW 2450	6651 9549
Coffs Harbour Arts Council Inc	6659 3360
Coffs Harbour Cake Decorating Club 69 Moonee Street COFFS HARBOUR NSW 2450	6652 3986
Coffs Harbour Chess Club c/- Coffs Harbour Catholic Recreation and Sports Club 59 High Street COFFS HARBOUR NSW 2450	6656 1404
Coffs Harbour Doll Club PO Box 1862 COFFS HARBOUR JETTY NSW 2450	6651 3173

Arts, Craft and Recreational Groups (cont'd)

Coffs Harbour Garden Club PO Box 344J COFFS HARBOUR NSW 2450	6658 3990
Coffs Harbour Lapidary and Associated Crafts Club PO Box J87 COFFS HARBOUR JETTY NSW 2450	6652 4959
Coffs Harbour Education and Recreation Program (CHERP) Coffs Harbour Neighbourhood Centre Earl Street, COFFS HARBOUR NSW 2450 Aquafitness, Astronomy, Calligraphy, Craft Club, Discussion Group, Fun & Fitness, Line Dancing, Tai Chi, Tenpin Bowling and Yoga http://sites.google.com/site/cherpcoffsharbour/home	6648 3694
Coffs Harbour Orchid Society 8 Skinner Close EMERALD BEACH NSW 2456	6656 1937
Coffs Harbour Stamp and Coin Club Coffs Harbour Catholic Recreation and Sports Club 59 High Street COFFS HARBOUR NSW 2450	6653 6143
Coffs Quilters and Needlecraft Inc Cavanbah Centre Harbour Drive COFFS HARBOUR NSW 2450	6652 4530
Family History Society	6651 8146
Friends of the Bunker Cartoon Gallery Inc PO Box 2474 COFFS HARBOUR NSW 2450	6651 7343
Ladies Craft Group Salvation Army	6652 8777

Arts, Craft and Recreational Groups (cont'd)

Plaza Club 6652 4366
Park Beach Plaza
Pacific Highway
PO Box 6001
COFFS HARBOUR NSW 2450

Sawtell Art Group Inc 6658 6477
Corner Bayldon and Lyons Roads
SAWTELL NSW 2452

Tokonama Bonsai Society 6653 6370
6652 4897

Toormina Craft Group 6653 2195
Guide Hall (opposite Toormina Library)
Minorie Drive
TOORMINA NSW 2452

Woolgoolga Art Group (BH) 6654 1054
Gallery (AH) 6654 1871
Turon Parade
WOOLGOOLGA NSW 2456

Woolgoolga Neighbourhood Centre Craft Club 6654 1598
Cnr Beach and Boundary Streets
PO Box 646
WOOLGOOLGA NSW 2456

Woolgoolga Spinners and Weavers (BH) 6654 1054
Gallery (AH) 6654 1768
Turon Parade
WOOLGOOLGA NSW 2456

Bingo

Coffs Harbour Catholic Recreation and Sports Club 6652 1477
61A High Street
COFFS HARBOUR NSW 2450

Arts, Craft and Recreational Groups (cont'd)

Coffs Harbour Ex-Services Club 6652 3888
Vernon Street
COFFS HARBOUR NSW 2450

Sawtell Bowling Club 6653 1287
Lyons Road
SAWTELL NSW 2452

Sawtell RSL Club 6653 1577
First Avenue
SAWTELL NSW 2452

Woolgoolga Bowling Club 6654 1307
Boundary Street
WOOLGOOLGA NSW 2456

Bowls and Indoor Bowls

Coffs Harbour Catholic Recreation and Sports Club 6652 1477
61A High Street
COFFS HARBOUR NSW 2450

Coffs Harbour Ex-Services Club 6652 3888
Vernon Street
COFFS HARBOUR NSW 2450

Coffs Harbour Senior Citizens Centre 6658 9876
Cavanbah Centre 6652 2585
Harbour Drive
COFFS HARBOUR NSW 2450

Coffs Harbour 60 and Over Bowlers Club 6658 1748

Mahjong
Coffs Ex-Services Club 6652 3888
Monday and Wednesday, 2.00 pm to 5.00 pm OR 6652 2234

Mid North Coast Vision Impaired 6655 6194
and Blind Bowlers Association

Arts, Craft and Recreational Groups (cont'd)

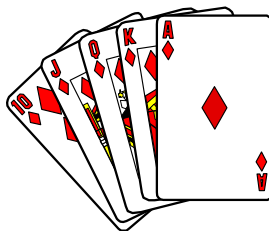
Park Beach Bowling Club 6652 3622
Ocean Parade
COFFS HARBOUR NSW 2450

Sawtell Bowling Club 6653 1287
Lyons Road
SAWTELL NSW 2452

Sawtell RSL Club 6653 1577
First Avenue
SAWTELL NSW 2452
Indoor Only

Woolgoolga Bowling Club 6654 1307
Boundary Street
WOOLGOOLGA NSW 2456

Card Games



Coffs Harbour Senior Citizens Centre 6658 9876
Cavanbah Centre 6652 2585
Harbour Drive
COFFS HARBOUR NSW 2450

Bridge

Coffs Harbour Bridge Club (BH) 6652 3951
City Hill (AH) 6653 7115
Albany Street
COFFS HARBOUR NSW 2450

Arts, Craft and Recreational Groups (cont'd)

Euchre

Coffs Harbour Ex-Services Club 6653 2921
Vernon Street
COFFS HARBOUR NSW 2450

Coffs Harbour Catholic Recreation and Sports Club 6652 8693
59 High Street 6652 1477
COFFS HARBOUR NSW 2450

Croquet

Sawtell Croquet Club 6653 2359
Sawtell Reserve
SAWTELL NSW 2452

Woolgoolga Croquet Club 6656 1080
Ganderton Street
WOOLGOOLGA NSW 2456

Dance

Coffs Harbour Senior Citizens Centre 6658 9876
Cavanbah Centre 6652 2585
Harbour Drive
COFFS HARBOUR NSW 2450

Dancing for Adults 6652 2506

Holiday Coast Bootscooters 6568 7232

Old Time Dance Club 6652 1927
Coffs Harbour Ex-Services Club
Vernon Street
COFFS HARBOUR NSW 2450

Pacific Dance Centre Ballroom Dancing 6651 3032
Coffs Harbour Showground
COFFS HARBOUR NSW 2450

Arts, Craft and Recreational Groups (cont'd)

Rock and Roll Dance Classes 6652 6708

Sawtell RSL Club 6653 1577
First Avenue
SAWTELL NSW 2452

Square Dancing 6652 4837
Cavanbah Centre
191 High Street
COFFS HARBOUR NSW 2450

Drama

Bootlace Productions
PO Box 351J
COFFS HARBOUR JETTY NSW 2450



6653 6664
6653 6010

CHATS Productions
PO Box 111
COFFS HARBOUR NSW 2450

6651 9098

Coffs Harbour Musical Comedy Co Inc
PO Box 1466
COFFS HARBOUR NSW 2450

6653 2345

Jetty Memorial Theatre
High Street
COFFS HARBOUR NSW 2450

6652 4697

Krazy Komedy Krew Productions

6652 3199
Mobile 0419 492 917



Arts, Craft and Recreational Groups (cont'd)

Education

Adult Community Education (A.C.E.)	6652 5378
Coffs Coast Adult Education (CCAЕ)	6652 5378
Coffs Harbour Education Campus (CHEC)	
North Coast Institute of TAFE	6659 3000
Southern Cross University	6659 3777
Coffs Harbour Education and Recreation Program (CHERP) http://sites.google.com/site/cherpcoffsharbour/home	6648 3694
Coffs Seniors Computer Club Inc	6652 3853 or 6658 0507
Enterprise and Training Centre (ETC)	6658 3959
Interrelate	6651 1010
University of the Third Age PO Box 1596 COFFS HARBOUR NSW 2450	(President) 6654 2493 (Secretary) 6653 6419

Exercise

Adventure Girls	6653 4765 or 6658 9676
Coffs Harbour Aussie Masters Swimming	6653 1977
Cycling - Bugs (Bicycle Users Group)	6656 2885
Empire Gym on the Jetty	6652 1428
Gentle Exercise and Yogacise Classes	6650 9710 Mobile 0409 608 000

Arts, Craft and Recreational Groups (cont'd)

Coffs Coast Health Club 6658 6222
Link Indoor Leisure Centre, 600B Hogbin Drive, Toormina
Seniors Classes, Baby Boomers Classes and more

Genesis Fitness Club 6651 1172
Cnr Park Avenue and Earl Street, Coffs Harbour

Lifeball - Sportz Central, Bray Street, Coffs Harbour 6651 2501
Thursdays, 9.30am to 11.30am or Bob Wilkins 6651 7184
(low key version of netball) or Jim Phillips 6651 7567

Ramsay Professional Services 6658 0322
(Aqua and Exercise Classes)

Tai Chi 6652 4699

Tennis 6652 3130

Water Aerobics (Aquatic Centre, Coffs Harbour) 6652 5700

Yoga 6651 2501



Golf Clubs

Bonville International Golf Resort 6653 4002
Coffs Harbour Golf Club 6652 3244
Karangi Golf Club 6653 8862
Sawtell Golf Club 6653 1006
Woolgoolga RSL Golf Club 6654 2111

Gun/Rifle Clubs

Coffs Harbour Clay Target Association 6656 1842
Coffs Harbour Gun Club 6656 1842
Coffs Harbour Pistol Club 6653 1250
Coffs Harbour Rifle and Rim Fire Club 6650 0471
Sporting Shooters Association of Australia 6652 4145

Arts, Craft and Recreational Groups (cont'd)

Music

Coffs City Choir	6656 1896
Coffs Coast Pipes and Drums PO Box 568 COFFS HARBOUR NSW 2450	6651 6284
Coffs Harbour Community Orchestra 69 Beryl Street COFFS HARBOUR NSW 2450	6652 3642
Coffs Harbour Music Society PO Box 1530 COFFS HARBOUR NSW 2450	6653 6547 6651 5738
Coffs Regional Conservatorium Arts Centre Cnr Earl Street and Park Avenue COFFS HARBOUR NSW 2450	6652 1592



Others

Coffs Coast Archery Club	6652 7505
Coffs Harbour Ex-Services Women's Association	6652 1191
Creative Living Group	6654 0501
Scenic Flights	6652 2992
Snooker and Billiard Club (Coffs Harbour)	6652 5362
Toastmaster International – Coffs Harbour	6652 9498

Arts, Craft and Recreational Groups (cont'd)

Table Tennis

Coffs Harbour Indoor Cricket Centre Lot 73 Pacific Highway BOAMBEE NSW 2450	6652 8133
Over 50's Table Tennis Association PO Box 980 COFFS HARBOUR NSW 2450	6651 4626

Travel

Catholic Club Travel Club	6652 5057
Coffs Harbour Friendly Travel Club	6653 7151
Coffs Ex-Services Travel Club	6652 3888

Volunteer Training / Recruitment

Volunteering Coffs Harbour Coffs Harbour Community Village Earl Street COFFS HARBOUR NSW 2450	6648 3660
--	-----------

Writers Groups

Coffs Calligraphers PO Box 192 COFFS HARBOUR NSW 2450	 6651 2406 6652 4057
Coffs Harbour Writers Group PO Box 1953 COFFS HARBOUR NSW 2450	6653 6995

Yoga

The Yoga Health Centre Searle Close BOAMBEE EAST NSW 2450 (Gentle Yoga and Rehabilitation Yoga)	6658 7700
--	-----------

12. RESPITE CARE AND DAY CENTRES FOR ADULTS

Residential Respite Information and Booking Service 6656 7646

Aged Care Assessment Team (ACAT)
Coffs Harbour Health Campus
345 Pacific Highway
COFFS HARBOUR NSW 2450

Respite Care

Bananacoast Home Nursing and Respite Care 6651 3153
66 Albany Street
COFFS HARBOUR NSW 2450

Coffs Harbour Legacy Nursing Home 6652 1426
55 Victoria Street
COFFS HARBOUR NSW 2450

Ozanam Villa 6652 2366
9 Nimbin Place
COFFS HARBOUR NSW 2450

Seagull Centre 6654 0022
Woolgoolga and District Retirement Village
49 High Street
WOOLGOOLGA NSW 2456

St Joseph's Hostel for the Aged 6651 2870
35-39 Azalea Avenue
COFFS HARBOUR NSW 2450

Waratah Centre 6648 3610
Coffs Harbour Community Village
Earl Street
COFFS HARBOUR NSW 2450

Respite Care and Day Centres for Adults (cont'd)

Day Centres for Adults

St Augustine's Community Group	6649 2957
Anglican Church Hall	6654 2305
Scarborough Street WOOLGOOLGA NSW 2456	
Sawtell Adult Social Morning	6653 4304
CWA Hall Elizabeth Street SAWTELL NSW 2452	
Waratah Centre	6648 3610
Coffs Harbour Community Village Earl Street COFFS HARBOUR NSW 2450	



13. SOCIAL GROUPS AND SERVICE GROUPS

Apex Clubs of Australia

Coffs Harbour 6651 5505

Coffs Harbour Legacy

6652 7583

Coffs Harbour Senior Citizens Club

6658 9876

Combined Pensioners and Superannuants Association - CPSA

Woolgoolga CPSA (President) 6654 1363
(Secretary) 6654 1675

Country Women's Association

Bonville CWA 6653 2662

Coffs Harbour CWA 6652 3046

Coffs Harbour CWA Evening Branch 6652 4335 or 6652 1889

Woolgoolga CWA 6656 1510 or 6654 2241

Lions Clubs

Bonville Sawtell 6651 3854

Coffs Harbour 6651 3063

Pacific City 6651 3854

Woolgoolga 6654 1404

Pink Ladies Auxiliary
Coffs Harbour Health Campus (Public Hospital)

6656 7000



Probus Clubs

Coffs City (President) 6658 0054
(Secretary) 6651 2891

Coffs Harbour Combined (President) 6652 7509
(Secretary) 6651 1148

Men's Coffs Harbour & District Probus Club Inc (President) 6651 9197
(Secretary) 6651 5069

Sawtell (President) 6658 2853
(Secretary) 6658 4888

Woolgoolga Ladies (President) 6654 2241
(Secretary) 6654 2644

Woolgoolga Men's (President) 6656 2906
(Secretary) 6649 2764
(Publicity Officer) 6654 7421

Rotary Clubs

Rotary Club of Coffs Harbour 6652 2812

Rotary Club of Coffs Harbour City 6653 6510

Rotary Club of Coffs Harbour Daybreak 6652 9393 or 6651 6551

Rotary Club of Coffs Harbour South Inc (Secretary) 6653 1843
(Publicity Officer) 0414 529 818

Rotary Clubs (cont'd)

Rotary Club of Sawtell 6653 1788

Woolgoolga Rotary Club 6654 1551 or 6656 2293

VIEW Clubs

Coffs Harbour VIEW Club -Daytime Group 6651 3622
PO Box 6439
Park Beach Plaza
COFFS HARBOUR NSW 2450

Coffs Harbour VIEW Club - Evening Group 6651 1299
PO Box 1953
COFFS HARBOUR NSW 2450

Korora VIEW Club 6651 4936 or 6653 7838
PO Box 6602
Park Beach Plaza
COFFS HARBOUR NSW 2452

Sawtell VIEW Club 6658 1702 or 6658 2221
PO Box 112
TOORMINA NSW 2452

Toormina Evening VIEW Club 6658 1442 or 6653 1109
12 Bardsley Crescent
TOORMINA NSW 2452

Woolgoolga Day VIEW Club 6654 0137
PO Box 268
WOOLGOOLGA NSW 2456

Zonta Club of Coffs Harbour 0409 532 556
PO Box 1584
COFFS HARBOUR NSW 2450
Website: www.zontadistrict24.org

14. SUPPORT AND SELF HELP GROUPS

Al-Anon Coffs Harbour – 6652 4740
PO Box 2521
COFFS HARBOUR NSW 2450
(for relatives and friends of alcoholics)

Alzheimers Support Group 6656 7688

Arthritis Foundation of NSW Free Call 1800 011 041
North Parramatta

Coffs Harbour Arthritis Group 6653 4687
6656 2558

Bereavement and Grief Support 6656 7683
Palliative Care 6656 7685
Coffs Harbour Health Campus
345 Pacific Highway
COFFS HARBOUR NSW 2450

Breast Cancer Support Service 6656 7683
Cancer Care Unit 6656 7685
Coffs Harbour Health Campus
345 Pacific Highway
COFFS HARBOUR NSW 2450

Coffs Harbour Cancer Care Support Group 6656 7683
Palliative Care 6656 7685
Coffs Harbour Health Campus
345 Pacific Highway
COFFS HARBOUR NSW 2450

Coffs Harbour Carers Support Group 6652 2331
6653 7686

Support and Self Help Groups (cont'd)

Coffs Harbour Women's Domestic Violence
Court Assistance Scheme
Shop 6, Parklea Arcade
13-15 Park Avenue
COFFS HARBOUR NSW 2450

6650 0302
Fax 6652 9749

Diabetes Support
Primary Health
Coffs Harbour Health Campus
345 Pacific Highway
COFFS HARBOUR NSW 2450

6656 7854

Guide Dogs NSW/ACT
Suite 3, 62 Moonee Street
COFFS HARBOUR NSW 2450

6652 7424

Meniere's Australia Inc - Coffs Harbour Support Group

6690 2528

Motor Neurone Disease Support Group

6652 2571

Multiple Sclerosis Information Line
Multiple Sclerosis Society of NSW
Coffs Harbour Branch
Outreach Worker
Support Group

1800 042 138
6651 2505
6654 0886

Parkinson's NSW Inc, Sydney
Parkinson's Support Group - Coffs Harbour
2/20 Loaders Lane
COFFS HARBOUR NSW 2450

Free Call 1800 644 189
6652 9959

Support and Self Help Groups (cont'd)

Renal Service Coffs Harbour 6656 7698
Coffs Harbour Health Campus
345 Pacific Highway
COFFS HARBOUR NSW 2450

Vision Australia 6651 1863
PO Box 1401
COFFS HARBOUR NSW 2450

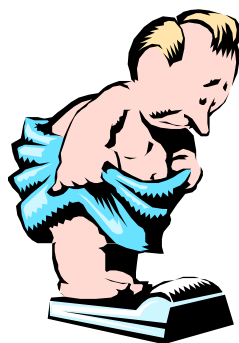
Stepping Stones 6656 7683
Support for People With Cancer 6656 7685
Coffs Harbour Health Campus
345 Pacific Highway
COFFS HARBOUR NSW 2450

Stroke Swim Club – Red Cross 6652 3424

Vision Impaired Support and Insight Group 6652 4117
Every second Thursday, Coffs Ex-Services, 10.00 am

War Widows' Guild of Australia NSW Ltd 6651 4204
10 Gillies Close
COFFS HARBOUR NSW 2450

Weight Watchers Toll Free 131 997
Coffs Harbour Community Village 6653 8526
Earl Street
COFFS HARBOUR NSW 2450



15. TRANSPORT

Coaches and Buses

Busways 6652 2744
4 O'Keefe Drive 1300 555 611
COFFS HARBOUR NSW 2450

Coffs Coast Tours 9037 9067

Coffs Harbour Day Tours 6658 7386

Holiday Coast Transportation Services 6658 9999
11 Hi-Tech Drive
TOORMINA NSW 2452

Sawtell Coaches 6653 3344
9-11 Newcastle Drive
TOORMINA NSW 2452

Ryan's Bus Service
Hawke Drive
WOOLGOOLGA NSW 2456 6654 1063
9 Hurley Drive
COFFS HARBOUR NSW 2450 6652 3201

Coffs Harbour Airport 6651 2727

Community Transport 6651 1137
Shop 8
13-15 Park Avenue
COFFS HARBOUR NSW 2450

Rail Bookings

Countrylink Travel Centre
Coffs Harbour Travel Centre
Coffs Harbour Railway Station
Angus Place
COFFS HARBOUR JETTY NSW 2450

6651 2757



Taxi Services

Coffs District Taxicab Network Pty Ltd
11 Hi-Tech Drive
PO Box 413
TOORMINA NSW 2452

131 008
Office 6658 9999

Woolgoolga Taxi Service
PO Box 510
WOOLGOOLGA NSW 2456

6654 1273

Taxi Services for People With Disabilities

Coffs District Taxicab Network Pty Ltd
11 Hi-Tech Drive
PO Box 413
TOORMINA NSW 2452

131 008



Transport Assistance

Isolated Patients Travel and Accommodation Scheme - IPTAAS

Lismore Coordinator

(02) 6620 2168



***Printed and Produced by
Coffs Harbour City Council as a Free Service***